

Kite-22 Crane Starter Package (KITE-22-STARTER)

Assembly Manual



What's In The Box

Please inspect the contents of your shipped package to ensure you have received everything that is listed below.

- Proaim 24.5ft Long Telescopic Camera Jib Crane
- Proaim 150mm Bowl Jib Stand (LW-150)
- D 33 Pro Camera Dolly
- Proaim Customized Storage Cases for Camera Jib Arm , Jib Stand & Accessories
- **Complimentary** Tools and Tool Pouch/Wrap

All rights reserved.

No part of this document may be reproduced, stored in a retrieval system, or transmitted by any form or by any means, electronic, mechanical, photo-copying, recording, or otherwise, except as may be expressly permitted by the applicable copyright statutes or in writing by the Publisher.

First Box includes

- Jib Sections

Second Box includes

- Jib Sections

Third Box includes

- Accessories of Jib Crane

Fourth Box includes

- Jib Stand

Fifth Box includes

- Dolly Pack

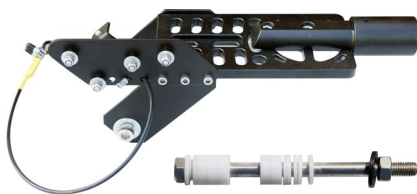


NOTE: We send the Jib sections in two boxes. One box has the sections with pipe packing and the other box (cardboard box) has the rest of the sections. **We only send one pipe packing for the jib sections.** We send the Dolly in cardboard box.

Packaging Material of Box 1 & 2: 7x Jib Sections



Packaging Material of Box 3: Accessories of Jib Crane



Head Platform with Bolt, Shaft
Collars, Washers and Nut



Hub Mounting



Joystick Controller Bracket



Levelling Cable



6x Locking Pins



Turnbuckle



6x Shank for Joining Arms

Packaging Material of Box 4: LW-150 Jib Stand with (P-RB-SP) Spreader



LW-150 Jib Stand



(P-RB-SP) Spreader

Packaging Material of Box 5: Dolly



D-33 Pro Camera Dolly



Dolly Feet



Safety Hints

ATTENTION: PLEASE READ THIS BEFORE USING TO PREVENT DAMAGE TO EQUIPMENT & OPERATOR!

- The crane may not be assembled or operated under influence of alcohol, drugs or any other intoxicating substances. Lack of attention while connecting the components together can cause substantial damage to equipment / operator.
- The crane may only be operated on levelled horizontal position. Make sure that the surface is stable.
- To prevent any harm or injury, properly join all sections of the crane. It is suggested to use the support stand while telescoping the complete length.
- Always connect the steel cables properly to provide stability to the system.
- They should not negatively impact the movements of crane in any way.
- After setup of the crane, the pan-tilt head / gimbal head shall be positioned under the central pivot section. In assembled state, when the pan-tilt head / gimbal head is higher than central pivot section, there should be someone to look after the crane system.
- The complete panning & lifting range around it must be kept free. Avoid anybody standing under the crane. No loose objects may be stored or placed on it. Be very careful while using indoors.
- Never operate the crane in the immediate vicinity of high-voltage power cables. It holds danger to life.
- Particular care is required when operating the crane in unfavourable weather conditions. The crane must be shut down in sufficient time. When it is used in a rainy day, the pan-tilt head / gimbal head and controlling bar shall be protected against rain.
- When you want to transport the crane, lock the Pan & Tilt Axis for safety. Make sure that the components do not rub together and cause any material wear.
- Before the counterweights are removed, ensure the remote head is resting on the support stand. Then gradually remove the counterweights before remote head, camera or other parts.
- In the interest of safe crane operation, avoid abruptly swivelling or stopping the crane, otherwise it may cause serious damage to equipment.

FOLLOWING THESE GUIDELINES WILL PROVIDE BETTER SHOTS AND TROUBLE FREE OPERATION.

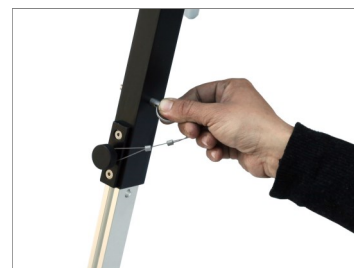
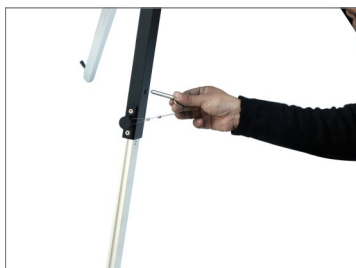
SHOULD YOU NEED ADDITIONAL INFORMATION, TECHNICAL ASSISTANCE IS AVAILABLE 'ONLINE' BY CONTACTING THE SALES REPRESENTATIVE.

Jib Stand Setup

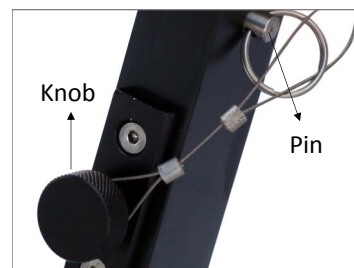
- Now take out the Tripod Stand from its case, and stretch its legs on floor as per the requirement. Then tighten the knob to secure it.



- Match holes of the bottom leg section with the upper leg section to secure tripod stand with Steel locking Pins and tighten the knob.



NOTE: We have provided double locking precautions on Jib Stand. Pin is first and primary locking knob is secondary locking so first lock the Pin to avoid slipping of stand.



Spreader Setup

NOTE: For setting up your desired package with spreader or with floor dolly follow the below steps:

- Take out Spreader and spread it on floor and open the legs (as per your requirement) of spreader with the help of provided knob.



- Put tripod stand on spreader & then lock it in place with the rubber grips. (Note: Tighten the ratchet knob of stand to secure it with rubber grips.)



- Once all the above mentioned steps are completed, you will see the stand and spreader as shown here.



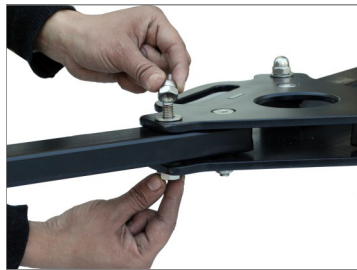
■ Dolly Setup

NOTE: *This dolly has various holes for flexible mounting of Tripod.*

- To open the legs of Dolly remove the bolts & fully spread it on floor.



- Then insert the bolts with their washer and tighten the bolts properly.



NOTE: *To keep the dolly in static position, lock the wheels by pushing down the lever.*



- Remove the allen bolts from tripod holders.



- Match the hole of Tripod holder with dolly to insert the long bolt & tighten it with the help of allen key.



- Remove ratchet knobs of the stand, Insert the tripod legs into the foots on the dolly.



- Then tighten the provided knob of tripod holder.



■ Hub Section Setup

NOTE: The Hub Assembly has several mounting holes. You can mount LCD Monitor or Joystick box to this assembly if you want.

- Install the Hub Assembly by sliding from the bottom side into the stand's Mount opening.



- Insert the bolts with washers and tighten properly with the help of Wrench.



NOTE: This is the Pan Friction Knob. Never pan the Jib with this knob tightened. If this knob turns while panning, it is too tight. Only tighten while parking the jib!

- Insert the provided washer & knob to secure the jib properly.



■ Jib Sections Setup

- Insert rear tube section (section 1) into the hub assembly, slide section 2 into section 1 and align holes of the Section 1 and section 2 with the central hole of hub assembly.



- Already attached 1st or 2nd jib sections, insert it onto the hub then insert the long bolt and nut to Secure the sections properly.



NOTE: We have provided double locking precautions on Jib, Knob is first and primary and pin is secondary locking so first lock the knob to avoid slipping of sections.

- After alignment of holes (Jib arms) insert hank lock pin & tighten it from another side with hank threaded cap. For double security insert the locking pin from the top of jib arm.



- Repeat this process for rest of the sections. Attach them towards the other Section 6 with 5, 5 with 4, 4 with 3, 3 with 2 & 2 with 1.

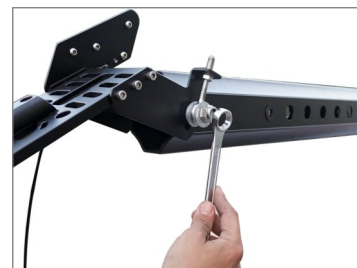


■ Head Section Setup

- Remove the bolt from head section then attach with the jib.



- Attach the provided bolt, shaft collars, washers and nut. Tighten all the Allen bolts and nuts to secure properly as shown in the image.



- Connect the one end of Head Platform Levelling cable with the head platform by hooking the turnbuckle ends.



- And other end attach with the hub assembly.



■ Rear Frame Setup

- To mount Rear section, of jib section and insert the bolt with washers through one end of the section to other. Slide the bolt through and hand tighten



NOTE: Install the pan tilts head *(Not included)*.



■ Adding Weights Setup

- Add weights *(Not Included)* to the rear weight section at both sides and tighten the weight closer knobs to secure properly.



- As each section is pulled from the previous section, you can store unused sections in the tail as ballast weight and lighten your counterweight demand.



■ Balancing

Balancing the camera on the head is critical to smooth operation.

- Find the horizontal balance point of your camera by using 2 fingers of one hand while holding handle.
- Mark this point on the side of the camera with chalk or tape.
- Turn the unit on and move the tilt control until the camera plate is vertical.
- Loosen the two screws holding tilt motor. **(DO NOT REMOVE)**
- Grasp the motor and turn slightly to disengage gears.
- Mount the camera to the camera plate with the screw provided.
- Tighten by threading the nut up to the bottom of the camera plate securely.
- Make sure your balance point previously marked with chalk or tape is in the middle of the plate.
- Loosen the knob below the camera plate and slide the camera and plate up or down until the center line of your camera is about in the middle of the large gear. Now tighten knob.
- If the camera is perfectly balanced it will stay in any position while motor gear is still unattached.
- Grasp the motor and turn it back until the gears mesh.
- Gently tighten motor screws.
- Secure the camera.

NOTE: *All reduction boxes have a small amount of backlash. The balancing of the camera will reduce the backlash to a minimum making it felt at the top of the tilt arc.*

■ Operation

- With the camera set up as previously described above, Power ON by pressing the RED Switch on the top of the Joystick control box.
- For inverted use, disconnect the leads to the motors, rotate the control box 180 degrees and re-install.

NOTE: *Remember practice makes perfect and always watch the cables for binding.*

Counterweights

The Jib is setup with “plate weights” or bar bells” style weights. Plate weights come in several weights and diameters. They get smaller as the weights get lighter. The largest (25lbs) is about 11 inches in diameter. The mounting hole is 1” in diameter for all weights. The jib has a varying weight ratio depending on the length you have chosen. The 24.5ft arm itself balances at about **121.5 lbs**. Just multiply the weight, of the additional items you will put on the end of the arm, by 5 and you will know how much weight to buy. Buy a few extras in case you add other accessories.

The lighter weights will allow you to “fine tune” once you’re ready to go.

■ Balancing Tips

Its sections collapse into each other

1. 24.5' Jib

Weights required for balancing only Jib (without camera & Pan Tilt) is: **55Kg (121.5 lbs)**

If the camera weight is 1kg, the jib is balanced with $55+5\text{kg}=60\text{kg}$

If the camera weight is 2kg the jib is balanced with $55+10\text{kg}=65\text{kg}$

2. 22.3' Jib

Weights required for balancing only Jib (without camera & Pan Tilt) is: **54Kg (119lbs)**

If the camera weight is 1kg, the jib is balanced with $54+4\text{kg}=58\text{kg}$

If the camera weight is 2kg the jib is balanced with $54+8\text{kg}=62\text{kg}$

3. 19' Jib

Weights required for balancing only Jib (without camera & Pan Tilt) is: **53Kg (116 lbs)**

If the camera weight is 1kg, the jib is balanced with $53+3\text{kg}=56\text{kg}$

If the camera weight is 2kg the jib is balanced with $53+6\text{kg}=59\text{kg}$

4. 15.10' Jib

Weights required for balancing only Jib (without camera & Pan Tilt) is: **52 Kg (114 lbs)**

If the camera weight is 1kg, the jib is balanced with $52+2\text{kg}=54\text{kg}$

If the camera weight is 2kg the jib is balanced with $52+4\text{kg}=58\text{kg}$

5. 12.8' Jib

Weights required for balancing only Jib (without camera & Pan Tilt) is: **51 Kg (112 lbs)**

If the camera weight is 1kg, the jib is balanced with $51+1\text{kg}=52\text{kg}$

If the camera weight is 2kg the jib is balanced with $51+2\text{kg}=53\text{kg}$

For some interesting compound shots try:

Moving the pan & tilt control the same direction as you move the rear of the jib. This keeps your subject framed but changes the perspective of the camera.

Example:

- Move the pan & tilt head all the way to the left, zoom out w/ subject framed in foreground
- Now move your hands to the right (camera swings to the left) while panning the camera right, keeping your subject framed.
- You can also try this with up and down shots or diagonal shots. Just remember to move your hands the same direction as you pan/tilt the camera.

**YOUR PROAIM KITE-22 CAMERA CRANE STARTER PACKAGE
ALL DRESSED UP AND READY TO GO!**



(SHOWN WITH OPTIONAL ACCESSORIES)

Warranty: We offer one year warranty for our products from date of purchase. Within this period of time, we will repair it without charge for labor or parts. Warranty doesn't cover transportation costs nor does it cover a product subjected to misuse or accidental damage. Warranty repairs are subjected to inspection and evaluation by us.

Liability: We are not liable for damage caused by products that we do not supply or from mishandling in transit, accident, misuse, neglect, lack of care of the product, or service by anyone other than our company.

Contact Us: In case of any kind of dissatisfaction, please Contact us immediately and we promise our utmost support and care until you use our product.