

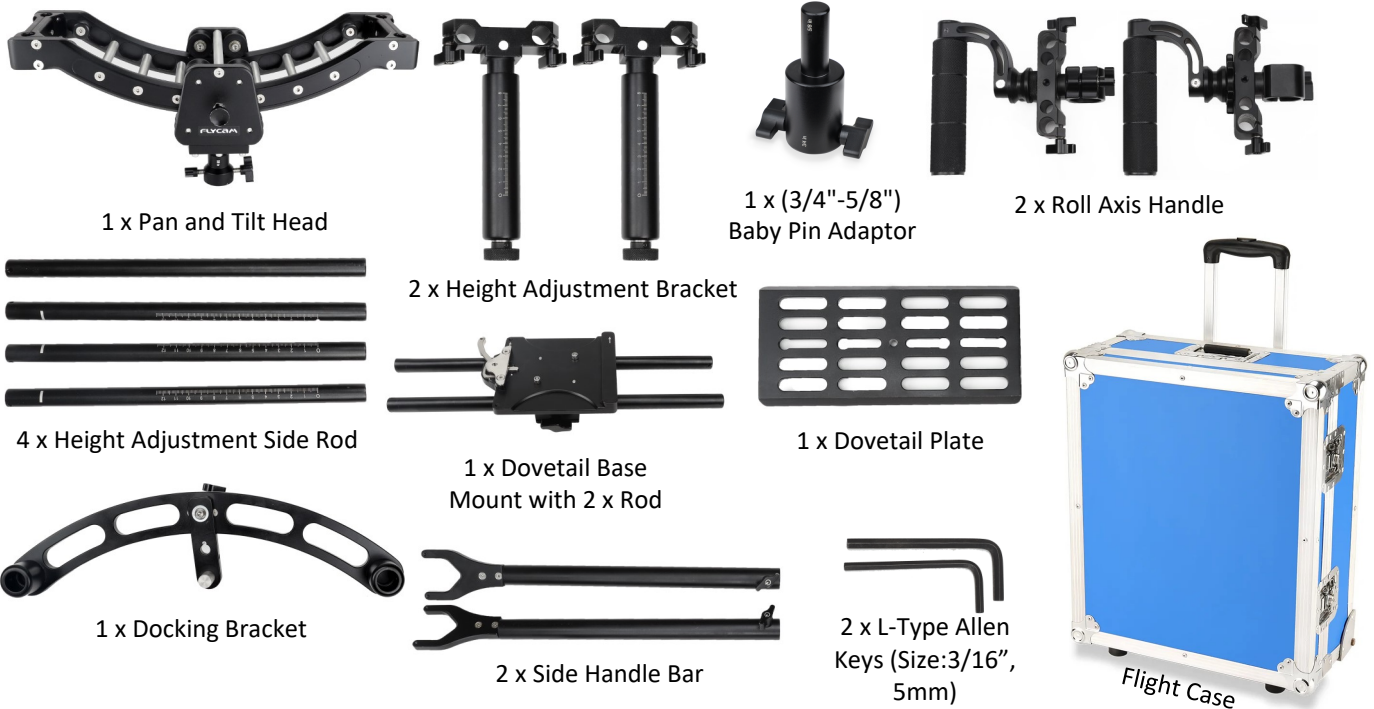
FLYCAM Equator 3-Axis Handheld Gimbal Stabilizer (ST-EQTR-01)

Assembly Manual



What's In The Box

Please inspect the contents of your shipped package to ensure you have received everything that is listed below.



All rights reserved.

No part of this document may be reproduced, stored in a retrieval system, or transmitted by any form or by any means, electronic, mechanical, photo-copying, recording, or otherwise, except as may be expressly permitted by the applicable copyright statutes or in writing by the Publisher.

Equator 3-Axis Handheld Setup

- Loosen both the knobs of the Pan Tilt Head and mount it on a C-stand (Not Included).



- Then properly tighten & secure both the knobs of the Pan Tilt Head, as shown in the image.



- Loosen both the bolts at the side of the Pan Tilt Head with the help of an Allen key.



Height Adjustment Side Rod Assembly

- Insert the Height Adjustment Side Rod into the Pan Tilt Head and align the bottom position using your finger.



- After aligning the Side Rod, tighten & secure both the bolts back into the Pan Tilt Head using an Allen key.



- Similarly, attach the other Height Adjustment Side Rod with the Pan Tilt Head, following the same process.

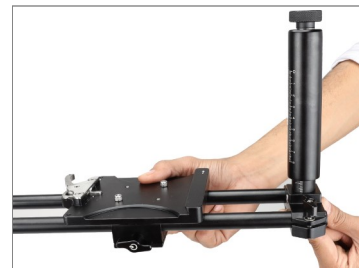


Height Adjustment Bracket Assembly

- Loosen both the knobs of the Height Adjustment Bracket.



- Insert the Adjustment Bracket into the rods of the Dovetail Base by aligning the holes, as shown in the image.



- After positioning the Adjustment Bracket and the Dovetail Base parallel to each other, tighten & secure them via both the knobs.



- Similarly, follow the same process to attach the other Adjustment Bracket with dovetail base.



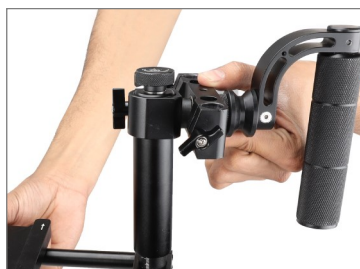
Roll Axis Handle Assembly

- Loosen the knob of the Roll Axis Handle, then insert it in the Adjustment Bracket by aligning them together.



- Tighten the knob after inserting the handle into the Adjustment Bracket.

NOTE: You can adjust the position of the handle according to your requirements.

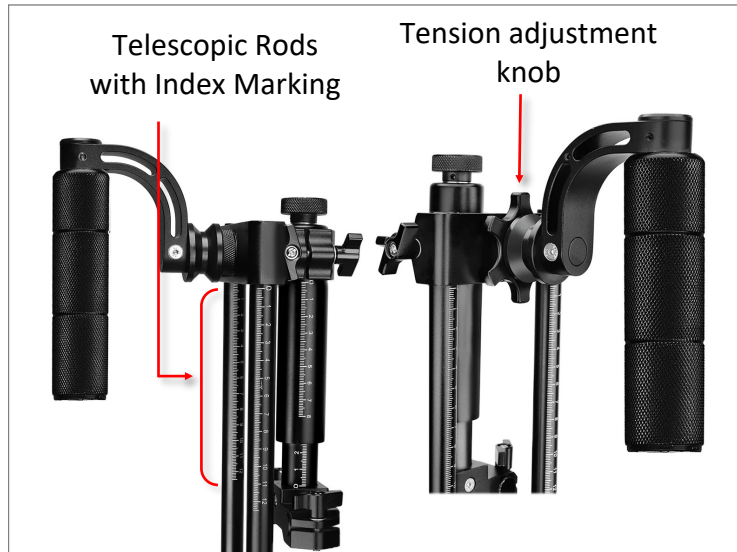


- Similarly, follow the same process to attach another Roll Axis Handle with Adjustment Bracket.

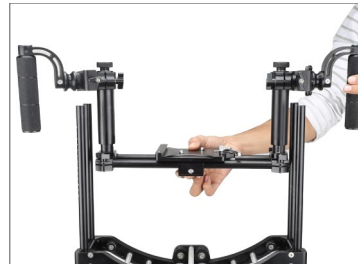
NOTE: The handheld mode is more flexible, direct, fast and precise than Steadicam to control the camera.



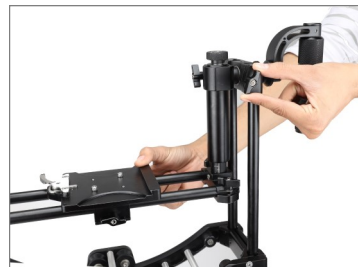
Features of Both Handle



- Mount the Dovetail Base with the Roll Axis Handle on the Side Adjustment Rod and parallelly align the position of the rods.



- Then secure the Roll Axis Handle by tightening both the knobs.



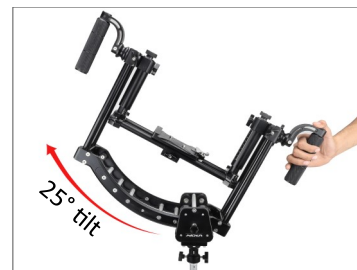
- Then pull the knob of the Pan Tilt Head & unlock it to give it tilting movement.



Flycam Equator 3– axis Features

- The three-axis Flycam Equator has a tilting range of $\pm 25^\circ$.

NOTE: Flycam Equator is a three-axis zero-gravity gimbal, with a tilting range of $\pm 25^\circ$ from center. Each with their own independent locking knobs, the stabilizer provides ample operational flexibility.



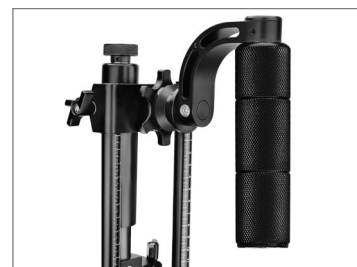
- Loosen the back knob of the Pan Tilt Head to facilitate panning movement.



NOTE: Flycam Equator, with a panning range of 360° & an independent locking knob for it, offers ample flexibility in operations.



- Loosen the tension adjustment knob to facilitate rolling movement for the setup and then tighten the knob back to lock the position.



NOTE: A tension adjustment knob helps you balance the setup optimally.



Dovetail Plate with Camera Assembly

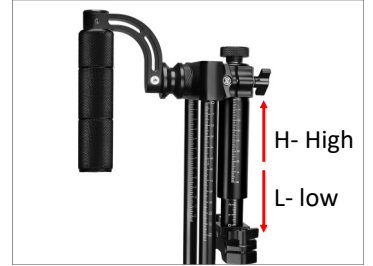
- Align the Dovetail Plate to the Camera (Not Included) then properly tighten and secure it with the help of a screwdriver.



- To secure & lock the Camera (Not Included) to the plate, use the provided locking lever.



- NOTE:** To adjust the height of the Adjustment Bracket, use the provided knob symbols (H- High & L- Low).



- Loosen and remove the knob of the Side Handle Bar.



- Insert the Side Handle Bar into the side hole of the Docking Bracket and properly tighten it with the help of the knob.



- Similarly, follow the same process to attach the other Side Handle Bar with Docking Bracket.



- After attaching the Docking Bracket and the Side Handle Bars together, align & mount it on a 5/8" Baby Pin (Not Included) via the receiver at the base of the bracket.



- After attaching the Camera (**Not Included**) to the plate, place it on top of the Dovetail Base.



- Then with the help of the provided knob of the Docking Bracket, properly tighten and secure the assembly.

NOTE: Mount the stabilizer on any C-Stand or Light Stand via the 5/8" Baby Pin receiver at the base of the docking bracket.



- It easily adapts to large cameras and has an O'Connor Standard Quick Release Dovetail Base Mount & Plate, ensuring quick camera setup. A docking bracket designed to hold the stabilizer in place lets you switch from handheld-mobile shooting to fixed-camera shooting in no time.



YOUR FLYCAM EQUATOR 3-AXIS HANDHELD GIMBAL STABILIZER ALL DRESSED UP AND READY TO GO!



(SHOWN WITH OPTIONAL ACCESSORIES)

Warranty: We offer one year warranty for our products from date of purchase. Within this period of time, we will repair it without charge for labor or parts. Warranty doesn't cover transportation costs nor does it cover a product subjected to misuse or accidental damage. Warranty repairs are subjected to inspection and evaluation by us.

Liability: We are not liable for damage caused by products that we do not supply or from mishandling in transit, accident, misuse, neglect, lack of care of the product, or service by anyone other than our company.

Contact Us: In case of any kind of dissatisfaction, please Contact us immediately and we promise our utmost support and care until you use our product.