

PROAIM EDC External Drive Compartment for Laptop Workstation (WKST-LTWT-EDC)

Assembly Manual



■ What's In The Box

Please inspect the contents of your shipped package to ensure you have received everything that is listed below.



Proaim EDC for Laptop Workstation

All rights reserved.

No part of this document may be reproduced, stored in a retrieval system, or transmitted by any form or by any means, electronic, mechanical, photo-copying, recording, or otherwise, except as may be expressly permitted by the applicable copyright statutes or in writing by the Publisher.

Laptop Workstation Setup

- Remove the nonslip mat from the top of the laptop workstation (**Not Included**), as shown in the image.



- Loosen the screws from the top of the bottom adapter using the Allen key and then remove them.



- After removing all the bolts from the workstation, remove the C-stand adapter (**Not Included**).



EDC Box Setup

- Then attach the Proaim EDC WorkStation (**Not Included**) by sliding it into the side part.



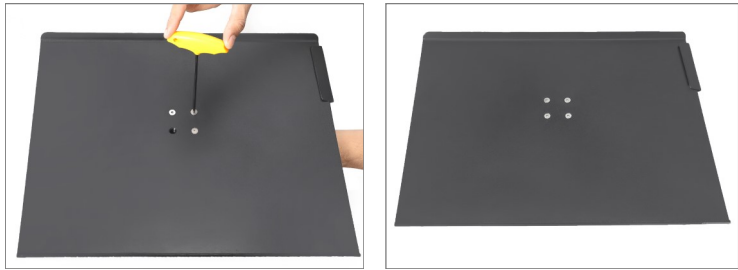
- To attach the C-stand adapter, align it to the threads of the Proaim EDC at the backside of the workstation (**Not Included**).



- After aligning, insert the bolts by matching them with the threads at the backside of the workstation (**Not Included**) and then attach the C-stand adapter.



- Properly tighten the bolts using the Allen key.

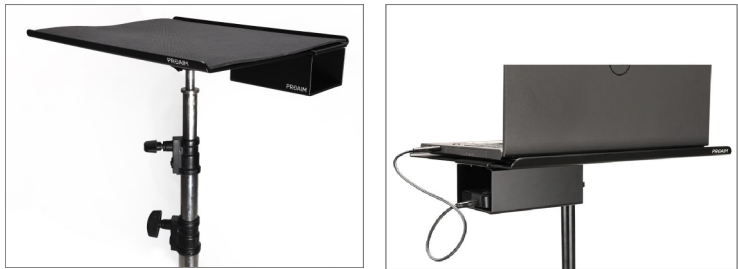


- Mount the laptop workstation on a C-stand and tighten the adapter knob to secure it properly.

NOTE: Laptop Workstation connected with c-stand, via the 5/8" Baby Junior Pin.



- Proaim EDC Box Setup is ready to use.



**YOUR PROAIM EDC EXTERNAL DRIVE COMPARTMENT FOR LAPTOP WORKSTATION
ALL DRESSED UP AND READY TO GO!**



(SHOWN WITH OPTIONAL ACCESSORIES)

Warranty: We offer one year warranty for our products from date of purchase. Within this period of time, we will repair it without charge for labor or parts. Warranty doesn't cover transportation costs nor does it cover a product subjected to misuse or accidental damage. Warranty repairs are subjected to inspection and evaluation by us.

Liability: We are not liable for damage caused by products that we do not supply or from mishandling in transit, accident, misuse, neglect, lack of care of the product, or service by anyone other than our company.

Contact Us: In case of any kind of dissatisfaction, please Contact us immediately and we promise our utmost support and care until you use our product.