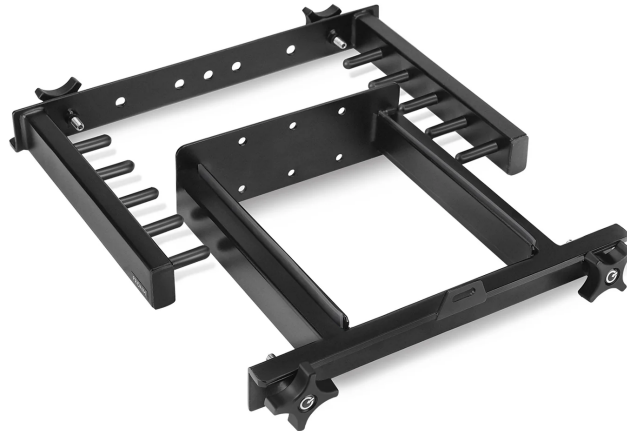


## Assembly Manual



### What's In The Box

Please inspect the contents of your shipped package to ensure you have received everything that is listed below.



4 X Knobs

C-Stand Holder



2 X Washers



2 X Allen Bolts  
(Size: 3/8" x 3/4")



1 X 5/16" L-Type Allen  
Key

---

All rights reserved.

No part of this document may be reproduced, stored in a retrieval system, or transmitted by any form or by any means, electronic, mechanical, photo-copying, recording, or otherwise, except as may be expressly permitted by the applicable copyright statutes or in writing by the Publisher.

## C-Stand Holders Setup

- Mount the Top Portion of the C-Stand holder on the upper crossbar of the Victor V1 Cart (Not Included).

**Note:** The holder comes in two parts supporting the C-stand legs and houses the riser columns.

- Insert the knob into the crossbar by aligning the threads and then tighten the knob.
- Repeat the same step to insert the remaining knobs.

**NOTE:** It is compatible with our Proaim Atlas and Victor Cart series.

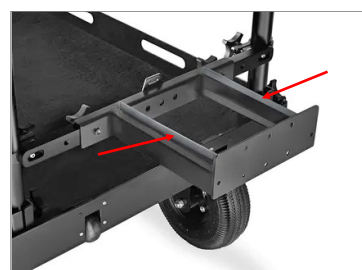
- The top portion of the C-Stand holder is securely mounted on the Crossbar.

- Now, mount the Bottom Portion of the C-Stand holder on the lower Crossbar and insert the knob.

- Tighten the knob for secure attachment.
- Repeat the same step to insert the remaining knobs.

- The bottom portion of the C-Stand holder is securely mounted on the Crossbar.

**NOTE:** have inserted rubber straps on the bottom portion of the C-stand holder to avoid scratches and damage to the C-stands.



## C-Stand Mounting

- Mount the C-Stands on the C-Stand holder.

**NOTE:** It easily accommodates up to four C-stands, from 20" small to 40" full-size stands.



**YOUR PROAIM C-STAND HOLDER  
ALL DRESSED UP AND READY TO GO!**



**(SHOWN WITH OPTIONAL ACCESSORIES)**

**Warranty:** We offer one year warranty for our products from date of purchase. Within this period of time, we will repair it without charge for labor or parts. Warranty doesn't cover transportation costs nor does it cover a product subjected to misuse or accidental damage. Warranty repairs are subjected to inspection and evaluation by us.

**Liability:** We are not liable for damage caused by products that we do not supply or from mishandling in transit, accident, misuse, neglect, lack of care of the product, or service by anyone other than our company.

**Contact Us:** In case of any kind of dissatisfaction, please Contact us immediately and we promise our utmost support and care until you use our product.