

PROAIM 7' Wave-2 Camera Jib Crane, Pan Tilt, Dolly Stand Gimbal Compatible (P-WV-2PP)

Assembly Manual



What's In The Box

Please inspect the contents of your shipped package to ensure you have received everything that is listed below.



All rights reserved.

No part of this document may be reproduced, stored in a retrieval system, or transmitted by any form or by any means, electronic, mechanical, photo-copying, recording, or otherwise, except as may be expressly permitted by the applicable copyright statutes or in writing by the Publisher.



Storage Bags

■ Camera Jib Crane Setup

ASSEMBLING YOUR PROAIM 7' WAVE -2 JIB WITH CST-100STAND, PORTABLE DOLLY & JR. PAN TILT HEAD

- Take out the bolt from the center of dolly and spread it on floor. Then put the bolt back through the center of dolly again.



- Position the height of the tripod by loosening all three adjustment knobs, slide the tripod up to the desired height and re-tighten the knobs securely.



- Now, place the tripod foot on the dolly and tie it down with the help of elastic clips as shown in the picture.



IN CASE OF ALUMINUM TRIPOD SPREADER, FOLLOW THESE STEPS

- In case of spreader, Take out the Spreader and spread it on floor and open the legs (as per your requirement) of spreader with the help of provided knob.



- Now mount the Tripod Stand on Spreader, lock it in place with the rubber grips



MOUNTING THE JIB

- Unscrew the locking lever from the Central Post of the jib. Place the Central Post in the bowl of Tripod Stand and re-tighten the locking mechanism for a secure fit. (as shown in the picture.)



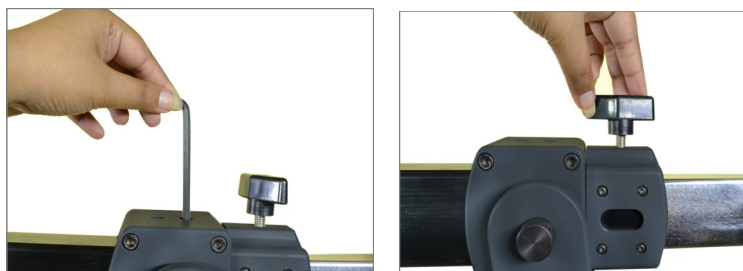
NOTE: It is important to make sure that the Central Fork is seated in the bowl properly. That means perpendicular to the tripod bowl. Off axis installation may hamper movement of the jib. Also you may need the assistance of a grip stand to hold the camera end of the arm during installation preventing it from falling as it will be front heavy at this point. You may also need the grip stand or assistance at the rear of the jib when mounting the camera.

- Provided are the jib panning control knobs (as shown in the picture). Loosen the knobs for the smooth pan movement of the jib and tighten these knobs to lock the pan movement of the jib.

NOTE: Inbuilt bubble leveler is also provided to check accurate set-up of jib on uneven surface areas.



- Now to extend the rear section of the jib, loosen the Allen bolts with the provided Allen key and then, loosen the knob as shown in the picture.



- Then, loosen the knob provided at the lower telescopic section of the jib arm as shown in the picture to extend the front section of the telescopic jib accordingly to the rear section.



- Attach the weight shanks at the rear end of the jib section by screwing it in and then add weights to it.

NOTE: Make sure the opposite end of the jib arm is secured so that the addition of the weights does not cause the arm to rise violently.



- Camera head mount is provided with a knob to control 90 degree tilt movement of the camera.
- Loosen the knob for the free tilt movement of the camera and tighten it to lock the movement.



- Mount your fluid head onto the bowl plate in order to attach the camera. And then finally, secure your camera properly on the fluid head.



To mount Jr. Pan Tilt Head, follow these steps:

- Remove the fluid head mounting bowl by loosening the bolts as shown and then remove the 100mm bowl.



- Attach the flate base plate and secure by tightening the bolts and then attach the Pan Tilt Head and secure by tightening the bolts.



- Now, mount your camera with camera mounting screw on Pan Tilt Head.



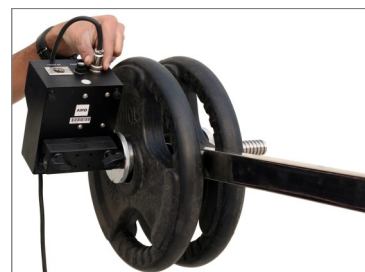
- For an over slung setup, attach the flat base plate on the top and mount the camera setup and secure the camera properly.



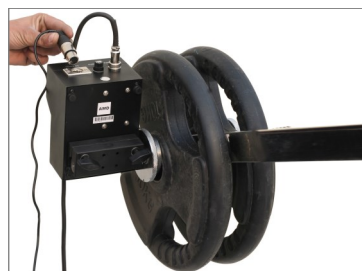
- For 100mm fluid head setup mounting, attach the 100mm bowl on the top, mount the camera setup and secure it properly.



- Mount the Joystick on weight rod & tighten the knob to secure.



- Now attach the one end of XLR Cable & AC Adapter with Joystick. And second end of XLR cable with Pan Tilt Head.



LCD Mounting

- Attach the LCD Mounting Arm to Jib Fork and tighten it properly to secure.
- Now screw in the LCD to arm and tighten it knob after positioning the angle of LCD Arm.



**YOUR 7' WAVE-2 CAMERA JIB CRANE, PAN TILT, DOLLY STAND GIMBLE COMPATIBLE
ALL DRESSED UP AND READY TO GO!**



(SHOWN WITH OPTIONAL ACCESSORIES)

Warranty: We offer one year warranty for our products from date of purchase. Within this period of time, we will repair it without charge for labor or parts. Warranty doesn't cover transportation costs nor does it cover a product subjected to misuse or accidental damage. Warranty repairs are subjected to inspection and evaluation by us.

Liability: We are not liable for damage caused by products that we do not supply or from mishandling in transit, accident, misuse, neglect, lack of care of the product, or service by anyone other than our company.

Contact Us: In case of any kind of dissatisfaction, please Contact us immediately and we promise our utmost support and care until you use our product.