

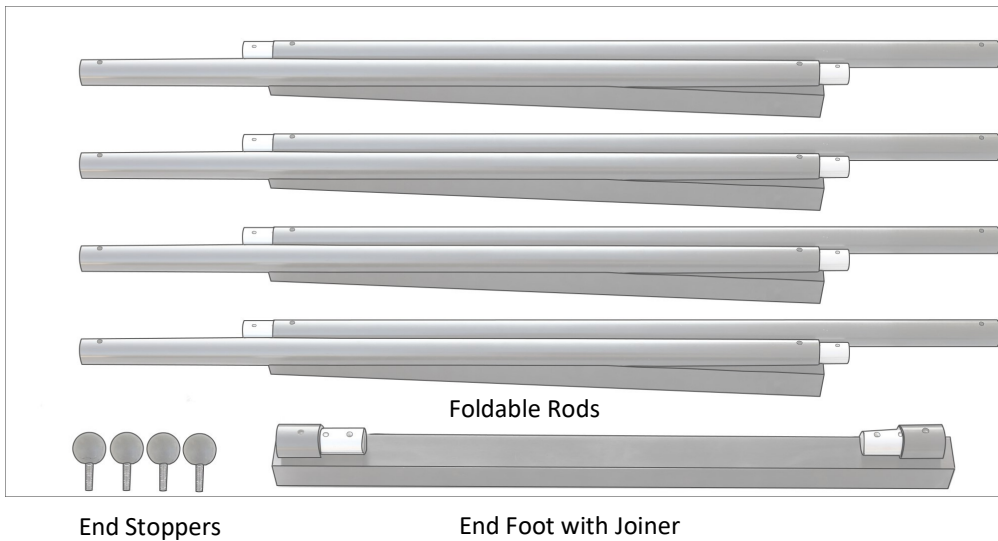
16ft Heavy Duty Camera Dolly Track (TRK-16-32)

Assembly Manual



What's In The Box

Please inspect the contents of your shipped package to ensure you have received everything that is listed below.



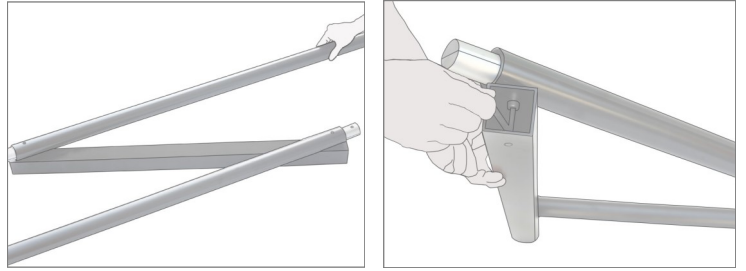
Storage Bag

All rights reserved.

No part of this document may be reproduced, stored in a retrieval system, or transmitted by any form or by any means, electronic, mechanical, photo-copying, recording, or otherwise, except as may be expressly permitted by the applicable copyright statutes or in writing by the Publisher.

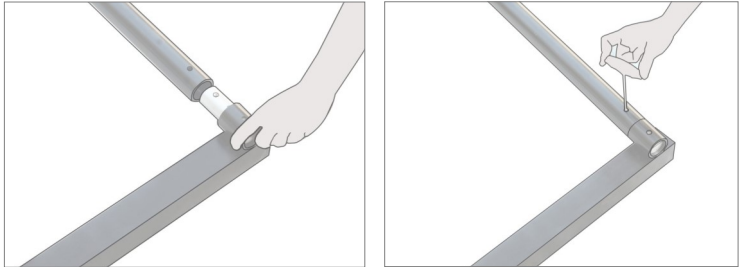
Dolly Track Setup

- Unfold the track from its stored position. Open the foldable rods of track set and tighten the screw to secure it.

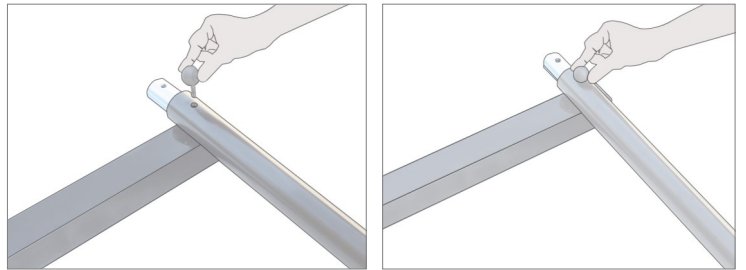


- Attach the track set to the joiners of the end foot and tighten the screw properly with an allen key so that there is a minimum gap at the joiner.

NOTE: Repeat the above steps to attach all the sections.



- Attach the end stoppers to prevent falling of your dolly from the track.



**YOUR PROAIM 16FT HEAVY DUTY CAMERA DOLLY TRACK
ALL DRESSED UP AND READY TO GO!**



(SHOWN WITH OPTIONAL ACCESSORIES)

Warranty: We offer one year warranty for our products from date of purchase. Within this period of time, we will repair it without charge for labor or parts. Warranty doesn't cover transportation costs nor does it cover a product subjected to misuse or accidental damage. Warranty repairs are subjected to inspection and evaluation by us.

Liability: We are not liable for damage caused by products that we do not supply or from mishandling in transit, accident, misuse, neglect, lack of care of the product, or service by anyone other than our company.

Contact Us: In case of any kind of dissatisfaction, please Contact us immediately and we promise our utmost support and care until you use our product.