

PR◀AIM 18ft Film Crane with Jib Stand (P-18-JS)

Assembly Manual



What's In The Box

Please inspect the contents of your shipped package to ensure you have received everything that is listed below.



All rights reserved.

No part of this document may be reproduced, stored in a retrieval system, or transmitted by any form or by any means, electronic, mechanical, photo-copying, recording, or otherwise, except as may be expressly permitted by the applicable copyright statutes or in writing by the Publisher.

Jib Stand Setup

- Loosen knob-1 located on Jib Stand. Slide the legs down to the widest possible position and tighten knob-1 to secure.

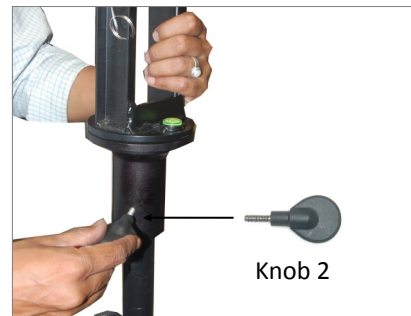
NOTE: A wider spread ensures more stability.

- Draw Central Post up to the desired height and lock it into place using provided Locking Pin.

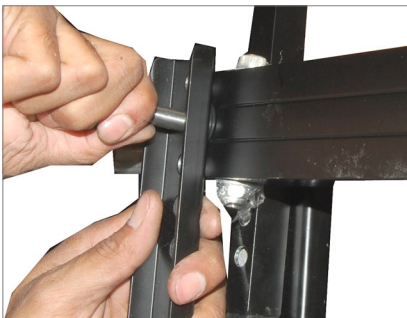


Camera Jib Setup

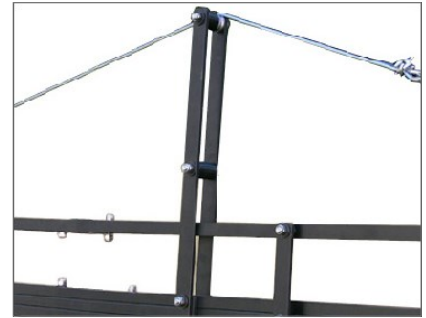
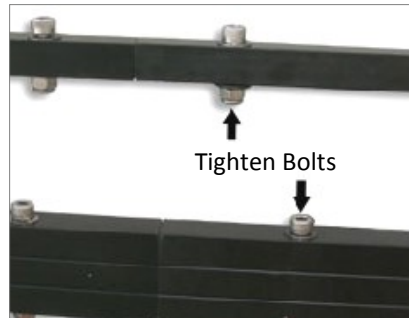
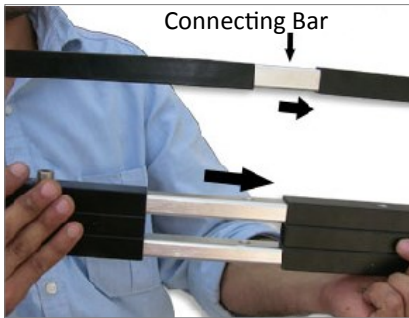
- Slide Central Post of Jib onto the Jib Stand and tighten knob-2 to secure it.



- Open shank from central post. Leave the black washers at one side. Then insert the end of Section-3 inside Central Post. Align holes of Section with Central Post to screw in the shank back.
- Similarly, insert black washers onto other side and push the shank to tighten it with the dome nut.
- Using a wrench, tighten the dome nut from both sides to secure them.



- Section-4 has connecting bars attached on both ends. Slide bars of Section-4 into Section-3 & tighten them together using provided allen key. Continue the Arm build by sliding in section 2 onto section 3, section 2 onto section 1 and finally section 5 onto section 4 in the same way. Your jib arm is now completely connected.
- Tighten the Wire Puller and its Central Pool Adapter. Tighten bolts to secure them.



- Connect the Wire/Cable Tensioner with cable. Simply rotate the mid-section handle to tighten the cable adding required amount of strength to the system.



- Insert Weight Shank/Rod and standard exercise Weights (**Not Included**) with a 1" hole, according to your camera setup requirements. Secure them with Weight Closers.

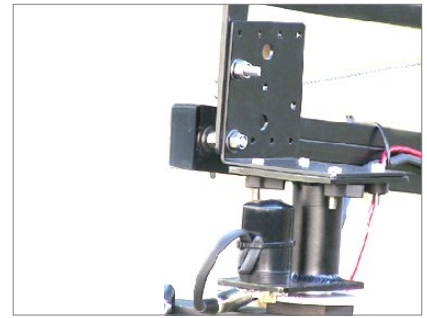


NOTE: Once you discover correct balance, consider marking the weights for that particular camera; facilitating an easier set up the next time.

- To accommodate all standard cameras, multiple slots are provided for attachment on Camera Plate.



- You can easily mount any Pan Tilt Head **(Not Included)** on the provided slots on camera plate via screws. This assembly is accomplished in Under slung Mode.



- Removing Locking Pin from Central Post allows you to frame multi-dimensional tilting shots by using Control Handle.



- The Central Fork has provision to attach LCD Monitor **(Not Included)** via LCD Mounting Arm.



YOUR PROAIM 18FT JIB ARM WITH STAND ALL DRESSED UP AND READY TO GO!



(SHOWN WITH OPTIONAL ACCESSORIES)

Warranty: We offer one year warranty for our products from date of purchase. Within this period of time, we will repair it without charge for labor or parts. Warranty doesn't cover transportation costs nor does it cover a product subjected to misuse or accidental damage. Warranty repairs are subjected to inspection and evaluation by us.

Liability: We are not liable for damage caused by products that we do not supply or from mishandling in transit, accident, misuse, neglect, lack of care of the product, or service by anyone other than our company.

Contact Us: In case of any kind of dissatisfaction, please Contact us immediately and we promise our utmost support and care until you use our product.