

PROAIM 12FT Camera Crane Jib with Stand (P-12-JS)

Assembly Manual



What's In The Box

Please inspect the contents of your shipped package to ensure you have received everything that is listed below.



All rights reserved.

No part of this document may be reproduced, stored in a retrieval system, or transmitted by any form or by any means, electronic, mechanical, photo-copying, recording, or otherwise, except as may be expressly permitted by the applicable copyright statutes or in writing by the Publisher.



Jib Stand Bag



Jib Section Storage Bag

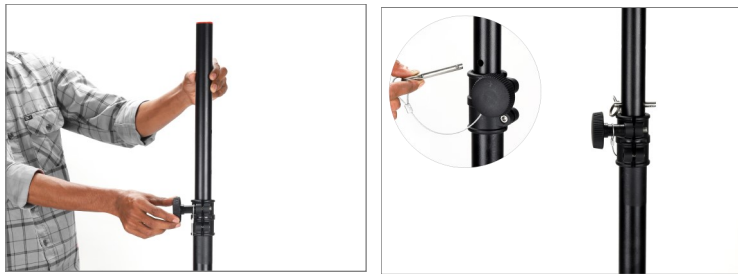
Index		
Sr. No	Particulars	Page No.
1	Jib Arm Assembly	2-3
2	Integrating the Section Jib Section	3-6
3	Pan-Tilt Head Setup	6-7
4	Joystick Controller Attachment	7-8
5	Joystick Operation	8
6	Final Setup	8-9

■ Jib Stand Setup

- Loosen the lower knob of the Jib Stand, as shown in the image.

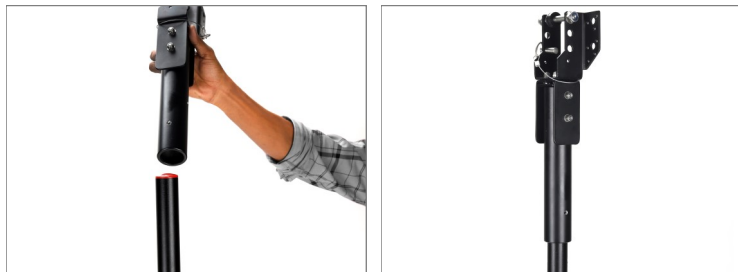


- Extend the legs along the Center Post to their widest position and re-tighten the lower knob for added stability.

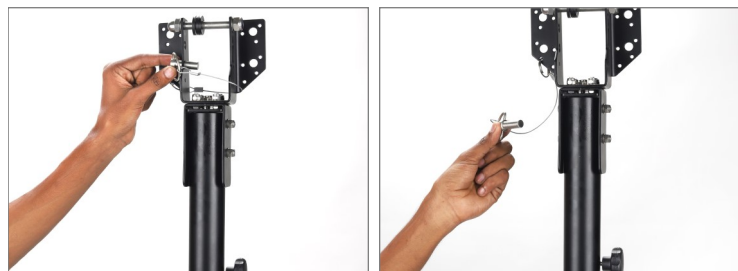


Assembling The Jib Arm

- Insert the Center Post of the Jib onto the Stand, as shown in the image.



- After inserting the Center Post, secure it with pins.

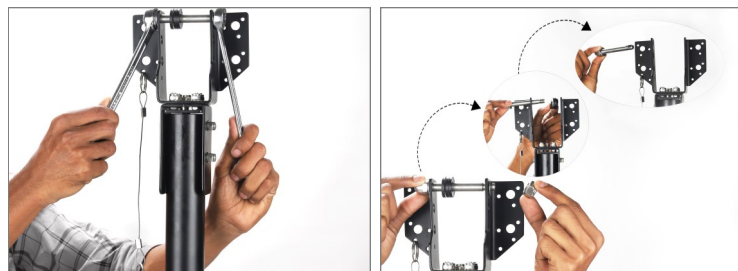


- Secure the attachment with the help of the knobs, as shown in the image.



Connect The 2nd Jib Section To The Center Post

- Loosen the bolt from the Center post using a spanner and remove the washers to further remove the bolt.



- Insert the end of the 2nd section in the Center Post and align the holes of the section with the Post to screw in the shank.



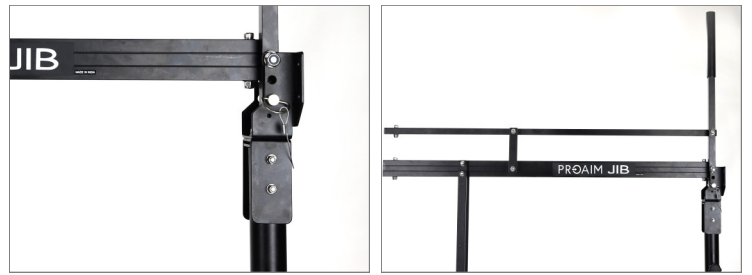
- Re-insert the black washers and push the shank to tighten the attachment with the dome nut.



- Tighten the dome nut from both sides using a wrench and secure the Jib section using a pin, as shown in the image.



- The jib section is securely attached to the middle section.



- Use the spanner and Allen key to remove the bolt for setting the position of the Central Pool Adapter.



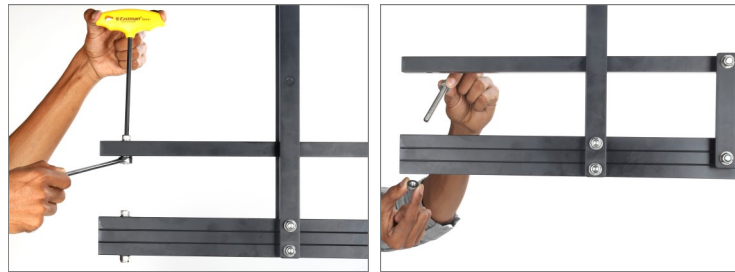
- Set the position of the Central Pool Adapter and insert the bolt to properly secure it, as shown in the image.



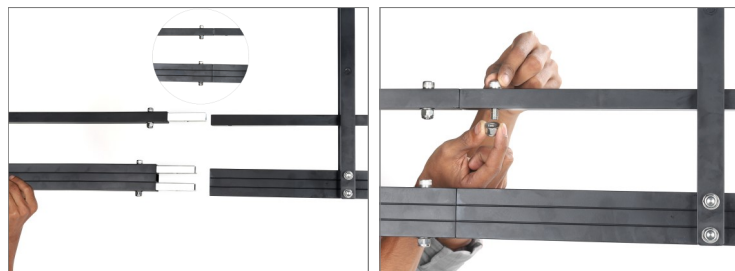
- Tighten the bolt using the spanner and Allen key.



- Remove the bolts in the front of the Middle section using the spanner and Allen key, as shown in the image.



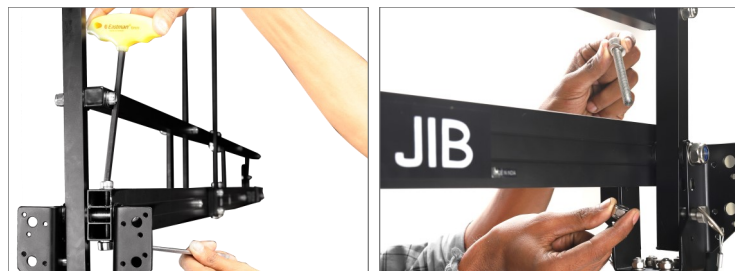
- Align the middle and end sections together to insert the bolt and nuts.



- Tighten the bolt using the spanner and Allen key to secure it.



- Remove the bolts of the middle section using the spanner and Allen key.



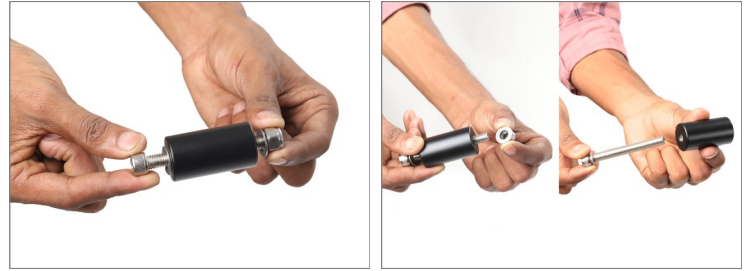
- Align the middle and front sections to insert the bolts to secure them.



- Now, tighten the bolts using the spanner and Allen key, as shown in the image.



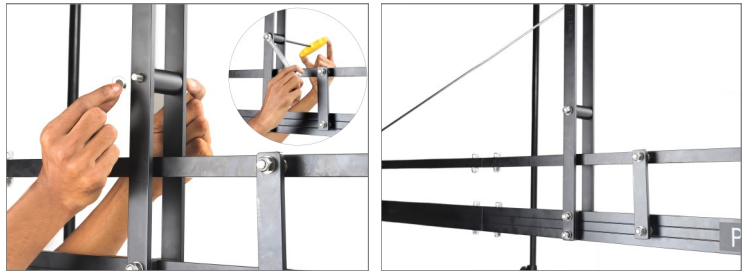
- Remove the bolts of the Center pool Adapter by loosening them.



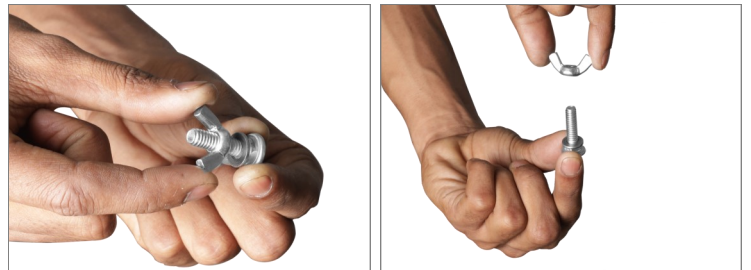
- Then, align the central pool adapter in the center of the wire puller and insert the bolt, as shown in the image.



- After inserting the bolt in the Central pool adapter, tighten it using the Allen key.

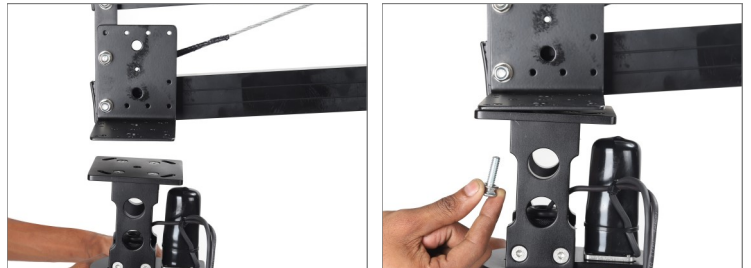


- Loosen the wing nuts and detach them.



■ Pan Tilt Head Setup

- Attach the Jr. Pan-Tilt Head to the Front Section head plate and insert the screw in the threaded hole.



- Similarly, insert the remaining screws to securely attach the Pan-Tilt Head.



- Jr. Pan-Tilt Head is properly Attached to the Jib.



- Connect the 4-pin male connector of the cable to the 4-pin female connector on the head for panning and tilting.



Attaching Joystick Controller

- Unwrap the Velcro strap around the 12V joystick controller and safely remove the cap, as shown in the image.



- Loosen the knob at the back of the 12V joystick controller and insert it into the weight rod.



- After properly inserting the Joystick controller, tighten both the knobs to secure it.



- Now, attach the 4-pin Power Cable with the Joystick Controller.



- Attach one end of the 12v adapter cable to the adapter.



- Connect the electric plug of the 12v adapter wire to the universal adapter.



- Attach the 4-pin Power Cable with the Joystick Controller.



Joystick Controlled Movement Functions

- **Speed Controller**- Adjusts the speed of pan & tilt based on the requirement of the shot.
- **Damping Control**- Prevents the Head from stopping with a jerk, enabling you to achieve smooth endings.
- **Pan-Tilt Direction**- You can reverse the panning & tilting direction as & when required.

- Speed
- Damping
- Direction



Junior Pan-Tilt Head

- Loosen the bolt of the Jr. Pan-Tilt Head (**Not Included**) using the Allen key and retighten it after properly positioning the head.



- Attach your camera to the Head's camera plate using the provided check nut.

NOTE: If the Joystick Control is opposite, undo the connectors of motors, rotate 180° and re-install.



- Your Camera is Properly attached with the Jr. Pan Tilt Head **(Not Included)**.

NOTE: Proaim Jr. Pan tilt **(Not Included)** offers complete 360° pan & tilt inaudible movements while keeping your camera safe and secure.



YOUR PROAIM 12FT CAMERA CRANE JIB WITH STAND ALL DRESSED UP AND READY TO GO!



(SHOWN WITH OPTIONAL ACCESSORIES)

Warranty: We offer one year warranty for our products from date of purchase. Within this period of time, we will repair it without charge for labor or parts. Warranty doesn't cover transportation costs nor does it cover a product subjected to misuse or accidental damage. Warranty repairs are subjected to inspection and evaluation by us.

Liability: We are not liable for damage caused by products that we do not supply or from mishandling in transit, accident, misuse, neglect, lack of care of the product, or service by anyone other than our company.

Contact Us: In case of any kind of dissatisfaction, please Contact us immediately and we promise our utmost support and care until you use our product.