

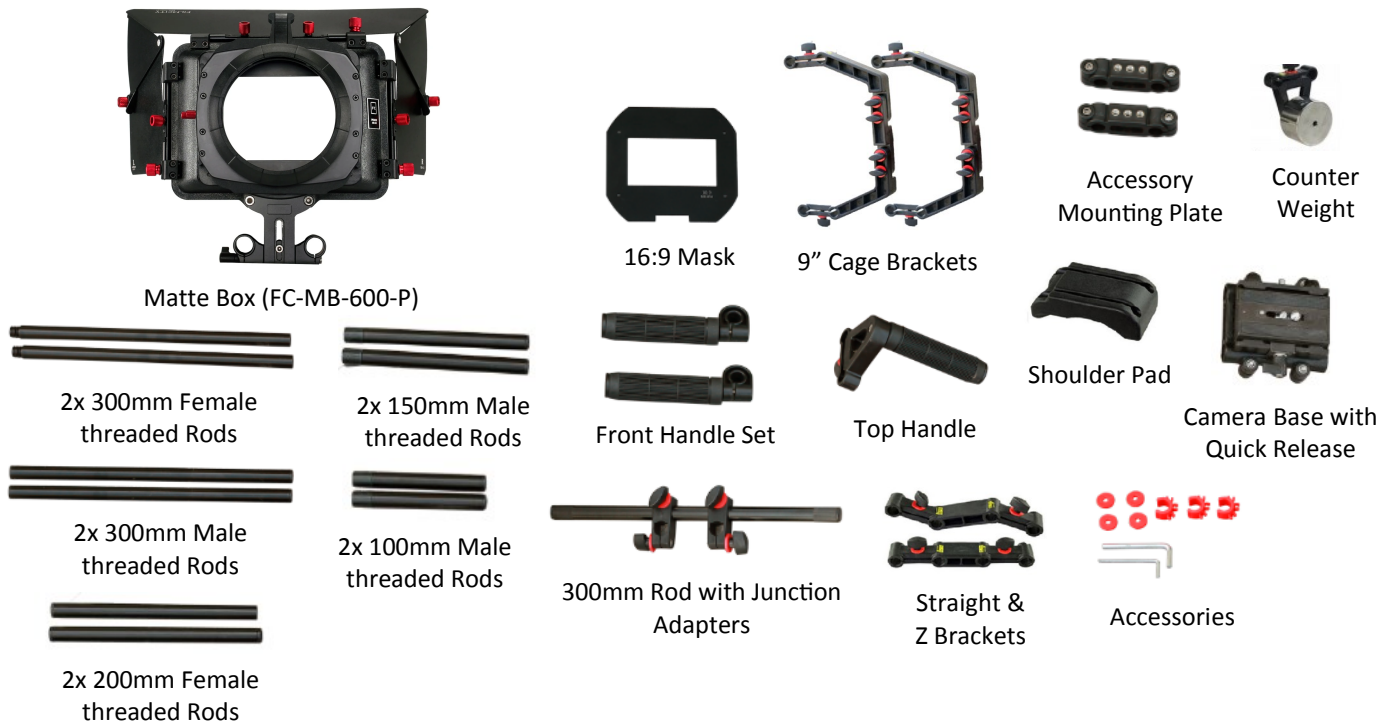
# FILMCITY FC-02 Shoulder Rig Kit with MB-600 Power Matte Box (FC-02-P)

## Assembly Manual



### What's In The Box

Please inspect the contents of your shipped package to ensure you have received everything that is listed below.



All rights reserved.

No part of this document may be reproduced, stored in a retrieval system, or transmitted by any form or by any means, electronic, mechanical, photo-copying, recording, or otherwise, except as may be expressly permitted by the applicable copyright statutes or in writing by the Publisher.

## ■ MB-600 Matte Box Setup

- Insert French Flag into Matte Box and tighten the screws. In the same way, insert Side Flags into (big) slots provided and secure with the screws.



**NOTE:** If the French Flag remains loose even after tightening the knob, then slightly tighten the allen bolt as shown.

- Then attach Knicker on Conversion Ring.

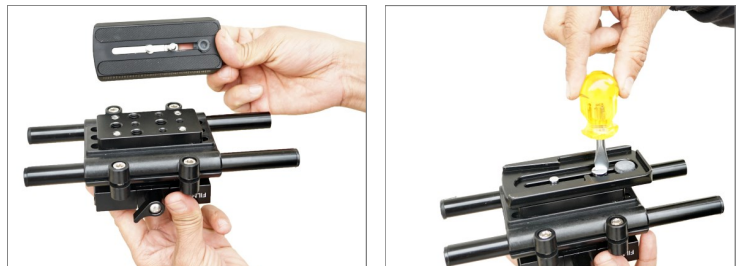


## ■ Shoulder Kit Setup

- Insert 300mm Female threaded Rods into Camera Base with Quick Release. Tighten bolts with the help of provided allen key to secure them properly.



- Fix the Quick Release of your fluid head to the bottom of Camera Base and tighten bolts with screw driver.

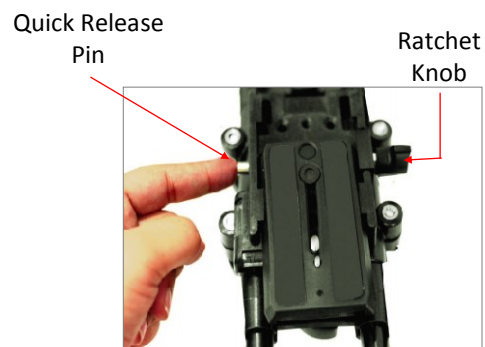


- Now mount it on fluid head and secure properly by tightening the knob.



## ■ Camera & Cage Setup

- Loosen Ratchet Knob and remove Quick Release Plate by pressing the Quick Release Pin.



- Fix the quick release plate with camera and tighten bolts using screw driver.



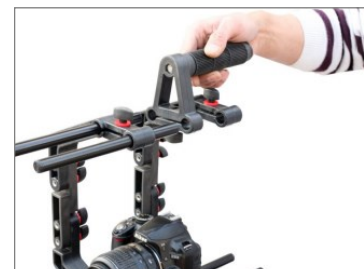
- Now mount camera with Quick Release Plate on the Camera Base and tighten knob properly to secure it.



- Attach both Cage Brackets with rods and tighten the knobs to secure them appropriately.



- Insert 2x 200mm female threaded rods into Cage Brackets on the top. Attach Top Handle with 200mm Rods and tighten the knobs to secure it properly.



- Now attach Straight Bracket at the end of Rods and lock it tightly with the help of provided knob.



- Then insert 300mm male threaded rods into the Straight Bracket and tighten knob to properly lock them.



- Attach Shoulder Pad and insert Counter weight into the rods. Then attach 150mm male rods towards the front to extend it for mounting other accessories.



## ■ Handle Kit Setup

- Attach Junction Rod Adapters with Front Handle Bracket. Then attach it with rods and secure it properly with the help of allen key.



- Now slide-in 300mm Knurling Rod through the Front Bracket and tighten the knobs to secure properly. Insert Clamps for Handle Set into the Rod and screw Handle into the Clamp.





- Finally mount Matte Box to the front of rods, align Knicker with Lens Barrel and tighten its knob.



## YOUR FILMCITY CAMERA CAGE SHOULDER RIG KIT ALL DRESSED UP AND READY TO GO!



(SHOWN WITH OPTIONAL ACCESSORIES)

**Warranty:** We offer one year warranty for our products from date of purchase. Within this period of time, we will repair it without charge for labor or parts. Warranty doesn't cover transportation costs nor does it cover a product subjected to misuse or accidental damage. Warranty repairs are subjected to inspection and evaluation by us.

**Liability:** We are not liable for damage caused by products that we do not supply or from mishandling in transit, accident, misuse, neglect, lack of care of the product, or service by anyone other than our company.

**Contact Us:** In case of any kind of dissatisfaction, please Contact us immediately and we promise our utmost support and care until you use our product.