

# FILMCITY Easy Teleprompter (FC-TP-EZ)

## Assembly Manual



### ■ What's In The Box

Please inspect the contents of your shipped package to ensure you have received everything that is listed below.



Teleprompter



Protective sunhood



Gloves



iPhone Adapter

**NOTE:** The teleprompter glass has a different amount of reflectivity at both ends. If the glass is not installed in proper orientation than you may experience a "double image" or "text shadow" effect on the teleprompter. To eliminate this, we have applied a Red sticker on the front side of the glass. In case, the mark gets removed and you face this issue, simply flip the teleprompter glass.

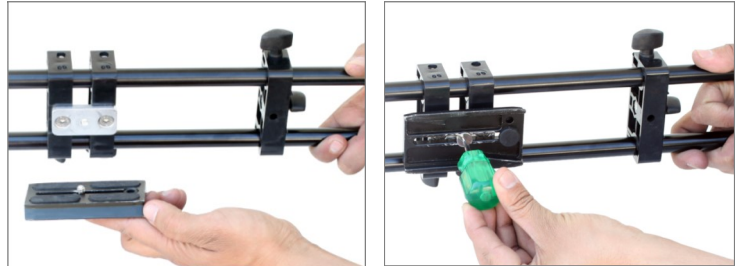
---

All rights reserved.

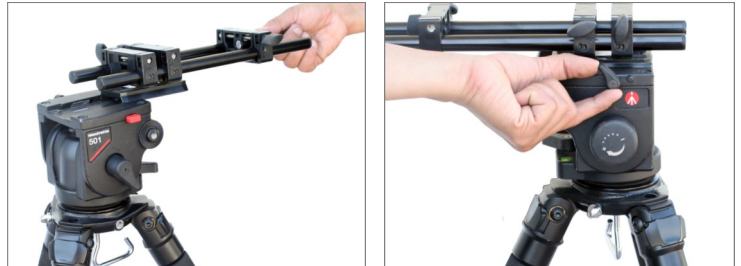
No part of this document may be reproduced, stored in a retrieval system, or transmitted by any form or by any means, electronic, mechanical, photo-copying, recording, or otherwise, except as may be expressly permitted by the applicable copyright statutes or in writing by the Publisher.

## ■ Teleprompter Setup

- Attach the rod support with quick release of your tripod and tighten to secure it.



- Mount it on Fluid head and tighten the knob.



- Attach the Teleprompter with 300mm long rods and tighten the knob to secure it.



- Remove the knob from rod holder, to attach the camera mount plate and then tighten the knob.



- Attach the camera on camera mounting plate and tighten the knob to secure it.



- Mount the Protective Sunhood to protect your lens from unwanted light thereby making the text readable.

- Tighten the iPad holder bracket to secure the iPad well.

**Note:** *You can also use your mobile phone.*



## YOUR FILMCITY EASY TELEPROMPTER ALL DRESSED UP AND READY TO GO!



(SHOWN WITH OPTIONAL ACCESSORIES)

**Warranty:** We offer one year warranty for our products from date of purchase. Within this period of time, we will repair it without charge for labor or parts. Warranty doesn't cover transportation costs nor does it cover a product subjected to misuse or accidental damage. Warranty repairs are subjected to inspection and evaluation by us.

**Liability:** We are not liable for damage caused by products that we do not supply or from mishandling in transit, accident, misuse, neglect, lack of care of the product, or service by anyone other than our company.

**Contact Us:** In case of any kind of dissatisfaction, please Contact us immediately and we promise our utmost support and care until you use our product.