

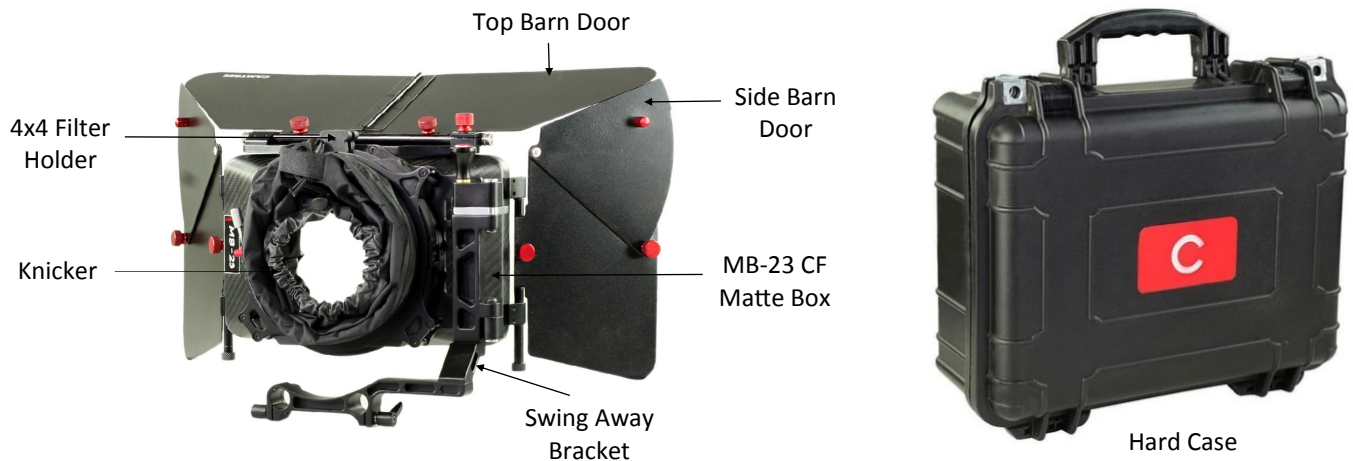
# CAMTREE Swing Away Matte Box (C-MB-23-CF)

## Assembly Manual



### ■ What's In The Box

Please inspect the contents of your shipped package to ensure you have received everything that is listed below.

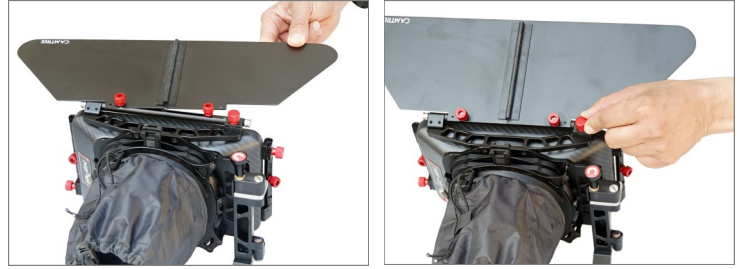


All rights reserved.

No part of this document may be reproduced, stored in a retrieval system, or transmitted by any form or by any means, electronic, mechanical, photo-copying, recording, or otherwise, except as may be expressly permitted by the applicable copyright statutes or in writing by the Publisher.

## ■ Matte Box Setup

- Insert French flag to the top of Matte Box and tighten it with screws.



- In the same way, insert side flags into the slots provided on both sides and secure them with screws.



- By pulling knob upwards releases MB-23 CF allowing it to easily swing away from the camera.



- You can easily insert filter holders as shown in the image.

**NOTE:** *The filter holder supports the use of 4x4" square filters, kit includes 2pcs of filter holders, one is rotating 180° and another is non-rotating.*



**YOUR CAMTREE MB-23 CF MATTE BOX  
ALL DRESSED UP AND READY TO GO!**



**(SHOWN WITH OPTIONAL ACCESSORIES)**