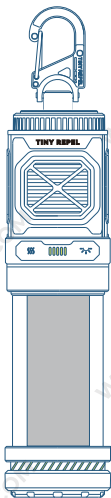


# FLEXTAIL<sup>®</sup>

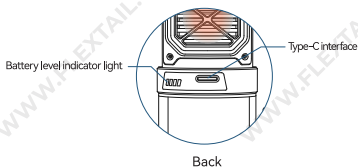
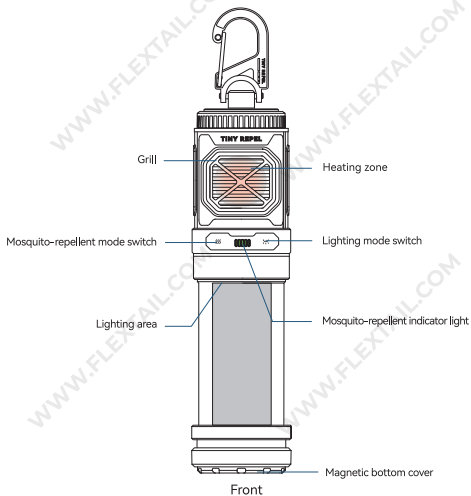


## TINY REPEL USER GUIDE



Please read the USER GUIDE carefully and keep safe before using the product.  
This product is only for adult but not a toy.

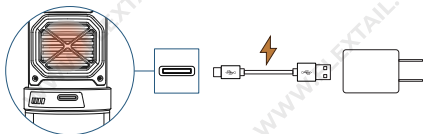
## Product Introduction



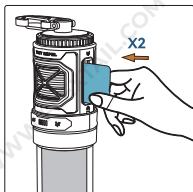
## Operating Instructions

### ⚠ NOTE:

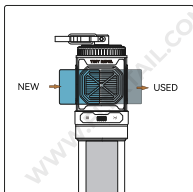
Please fully charge the product before first use.



### 1 Placing/Replacing Mosquito Repellent Refill

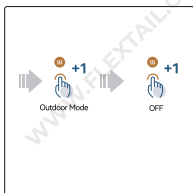
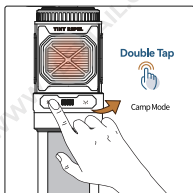


Placing

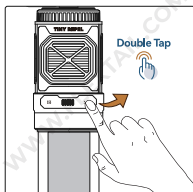


Replacing

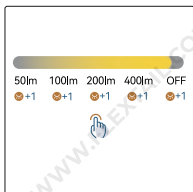
### 2 Activating Mosquito Repellent Function



### 3 Activating Lighting Function



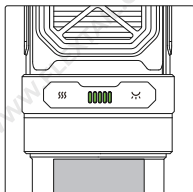
· Double-click switch to the lighting mode.



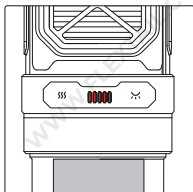
· Single-click to switch between different brightness levels.

### 4 Indicator Light

Working Indicator Light

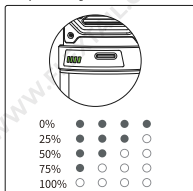


Camp Mode

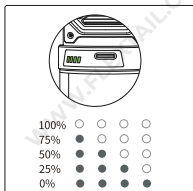


Outdoor Mode

#### Battery Indicator Light



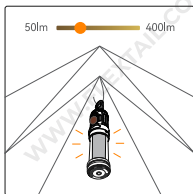
Input



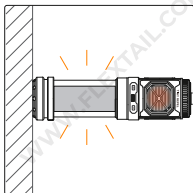
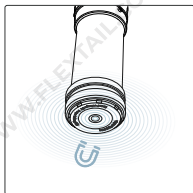
Output

## 5 How to Place&Connect the Bracket

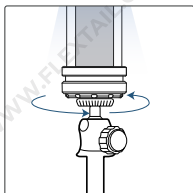
### 1 Hanging



### 2 Magnetic Adsorption



### 3 1/4 threaded interface



## Product Specifications

Size	36*36*144mm
Weight	148g
surface material	PA66/PC
Waterproof rating	IPX5
Rated voltage	5V
Rated power	5W
Battery capacity	4800mAh
Charging power	10W
Lighting brightness	50lm/100lm/200lm/400lm
Color temperature	3200K
Lighting function endurance time	50h (50lm) /25h (100lm/ 13h(200lm)/9h(400lm)
Mosquito Repellent Heating Temperature	110°C(Camp Mode)
	165°C (Outdoor Mode)
Mosquito Repellent Function Battery Life	10h (Camp Mode)
	7h (Outdoor Mode)
Package Contents	TINY REPEL*1, Type-C Charging Cable1, User Manual*1

## Tips:

When battery is low, in order to ensure better mosquito repellent experience, the use of the mosquito repellent function is prioritized. Therefore, the lighting function is unable to switch on is normal while using the mosquito repellent function.



## WARNING:

- Do not remove the battery from the mosquito repellent;
- Do not use this product if the battery components are damaged;
- Do not leave the mosquito repellent in water for a long time;
- To reduce the risk of burns, close supervision is required when using this product near children;
- Keep away from children;
- Do not insert fingers, metal, or other foreign objects into this product;
- If the battery leaks, emits an odor, or deforms, stop using it immediately and dispose of it safely;
- Do not use mosquito repellent products in a closed tent or room with poor ventilation;
- Do not attempt to repair or modify the product without authorization. If servicing is needed, please contact FLEXTAIL;
- The device can only use recommended evaporative media. Using other media may produce toxicity or fire;
- The device has a heated surface for evaporative active media, so do not touch these surfaces during use.

## How To Place the Mosquito Repellent:

- It is best to place the mosquito repellent in the center of the mosquito-infested area;
- If it is windy, please place the mosquito repellent upwind from where you are sitting;
- Do not cover the mosquito repellent during use;
- If the mosquito-infested area is too large, insert two mosquito repellent tablets or use multiple mosquito repellents.

## Storage and Transportation:

- This product contains a lithium battery and is subject to specific transportation restrictions. Please check the packaging before transportation;
- Do not store the product for a long time with the battery completely discharged. Lithiumion battery products should be charged at least once every 3 months during storage;
- Do not keep the mosquito repellent in an environment above 60°C for a long time;
- When not in use, store it in a dry and room-temperature environment.

## After-sales Service and Warranty

### Warranty Period:

- FLEXTAIL provides a one-year warranty service from the date of purchase for customers who purchase products from authorized retailers, covering defects in materials and workmanship.

### Warranty Coverage:

- The product is within the warranty period;
- Quality problems that occurred when the product left the factory, such as missing parts or surface damage.

## Warranty Service:

- Customers can consult the company or authorized dealers for detailed warranty service information, and the after-sales staff will provide the nearest dealer's address and contact information to the customer;
- If the product falls within the warranty coverage, the after-sales staff will provide specific warranty services, such as replacement of spare parts or returns and exchanges;
- If there are any product-related issues, we will resolve them for you as soon as possible;
- To learn more about our after-sales service policy, please refer to the "After-sales Maintenance Policy".

## Disclaimer:

- The following situations are not covered by the warranty: normal wear and tear caused by use; unauthorized modification or alteration; improper use, maintenance, or care; accidents; negligence; intentional damage or use of the product for non-designated purposes;
- FLEXTAIL guarantees that all products have passed the factory inspection. If you believe that the product indeed has quality defects or omissions, please refuse to sign and contact FLEXTAIL's after-sales customer service for processing. If the product is confirmed to have no quality defects, FLEXTAIL will not accept the claim;
- If the product does not have quality problems, we do not support returns or exchanges without reasons, please understand;
- The company will not be responsible for any statements related to the product that are not directly made by the company.

## After-sales service policy

### After-sales instructions:

- For goods that are returned or exchanged without reason, please ensure that the product's outer packaging, accessories, gifts, instructions, and other items are complete and new, not activated, and free from any human damage that would affect resale.
- For goods returned or exchanged due to performance malfunctions, please ensure that the malfunction is not caused by your improper use (failure to use in accordance with the instructions or other reasonable ways of use). Whether there is a performance malfunction due to non-improper use shall be subject to FLEXTAIL's testing results.

### Still have questions:

- Contact us via email: [service@flectailgear.com](mailto:service@flectailgear.com)



- f Facebook:** flextail
- @ Instagram:** flextail\_official
- ▶ YouTube:** flextail
- e www.flextail.com**
- ✉ Email:** service@flextailgear.com



**RoHS**

