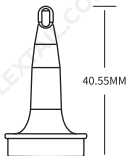
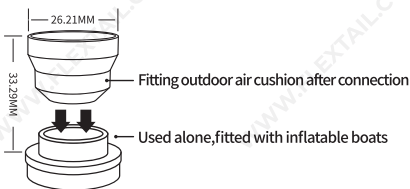


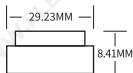
# **The Guide Of INFLATABLE PUMP**

— **F210507** —

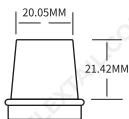
## THE NOZZLES



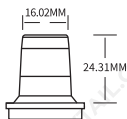
For swimming ring / inflatable toy



For vacuum storage bag

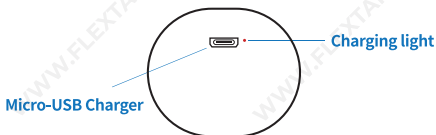
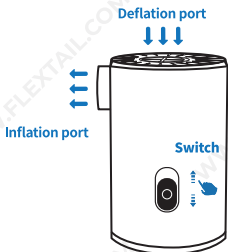


For air bed / floating bed



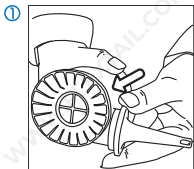
For air bed / floating bed

## THE INFLATABLE PUMP

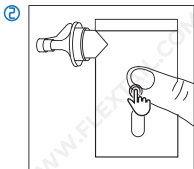


## USE

### INFLATE:

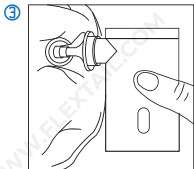


Filling port connect nozzle

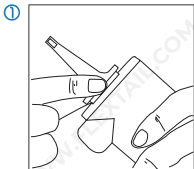


Push the switch up

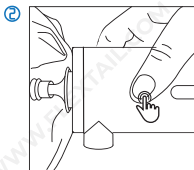
### EXHAUST:



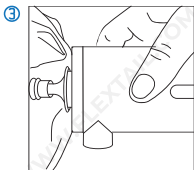
Connect the object and start filling it full



Drawing port connect nozzle



Push the switch up



Connect the nozzle to your item and start exhausting air

## Indicator Status:

### Low Power Indication



When the red light is on, which means the air pump needs to be charged

### INPUT : 5.0V = 1A / Charge indicator



Weight	167g
Volume	62mm*52mm*94mm
Inflation Pressure	4.5kPa (0.65PSI)
Filling Speed	250L/min
Exhaust Pressure	4kPa
Compression Ratio	65%

Battery Capacity	3800mAh
Endurance	35min
Average Power	20W
Package Containment	INFLATABLE PUMP / Micro-USB cable / Manual / Storage bag / Nozzles*5 INFLATABLE PUMP / Micro-USB ケーブル / 説明書 / 収納袋 / ノズル*5
Certification	CE\FCC

## 【ENGLISH】

### INSTRUCTIONS FOR USING INFLATABLE PUMP

#### PRODUCT

Please refer to the illustrations.



#### USE

Please refer to the illustrations.



#### STORAGE AND TRANSPORTATION

Please refer to the illustrations.



#### CARE AND MAINTENANCE

Please refer to the illustrations.



#### TROUBLE SHOOTING

If INFLATABLE PUMP does not work:

- Plug in the charger and check the power.
- Check the surface for water or other liquid.
- Check if the fans are stuck or blocked .
- Press the switch repeatedly.

## **SPARE PARTS**

There are no user-replacement parts for this product other than the nozzles, micro usb-cable, storage bag.

## **⚠ WARNING**

- Do not use for more than 10 minutes.
- Do not put it under the water for a long time .
- Keep the inflation port or the deflation port clean.
- Do not put your finger into the inflation port or the deflation port.
- Do not watch the inflation port or the deflation port when pump working.
- Children under the age of 12 must have adult supervision when using the pump.
- Please check whether the air pump is functioning properly before use.

## **LIMITED WARRANTY**

We warrant for one year from purchase date and only to the original retail buyer(Buyer) that our products (Products) are free from defects in material and workmanship. For pump products, our warranty is for one year. If Buyer discovers a covered defect, Buyer should return the Product to the place of purchase. In the event that this is not possible return the Product to us at the

address provided. The Product will be repaired or replaced at our discretion. That is the extent of our liability under this Warranty and, upon expiration of the applicable warranty period, all such liability shall terminate. We reserve the right to require proof of purchase for all warranty claims.

### Warranty Exclusions

We do not warranty Products against normal wear and tear, unauthorized modifications or alterations, improper use, improper maintenance, accident, misuse, negligence, damage, or if the Product is used for a purpose for which it was not designed.

This Warranty gives you specific rights, and you may also have other rights which vary from state to state.

Except for expressly stated in this Warranty we shall not be liable for direct, indirect, incidental, or other types of damages arising out of, or resulting from the use of Product This Warranty is in lieu of all other warranties, express or implied, including, but not limited to, implied warranties of merchantability or fitness for a particular purpose (some states do not allow the exclusion or limitation of incidental or consequential damages or allow limitations on the duration of an implied warranty, so the above exclusions may not apply to you)