

FLEXTAIL™

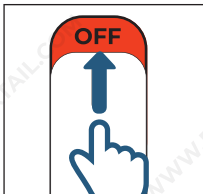
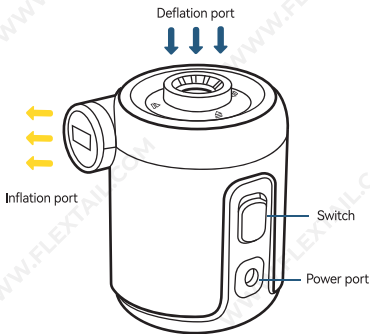
The Guide of EVO PUMP 2

— **OP05-NR02** —

EVO PUMP 2

Flextail.com

Function instuction



Switch

Nozzles Distinguish

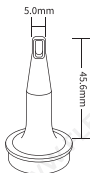


Connect to use, applicable to outdoor mattresses

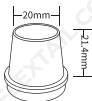
Use alone



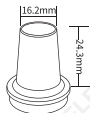
For vacuum storage bag



Swimming rings/inflatable toys

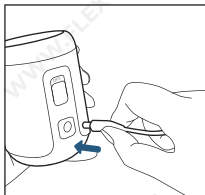


Air bed

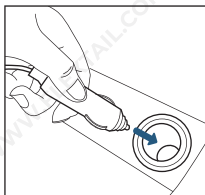


Air bed

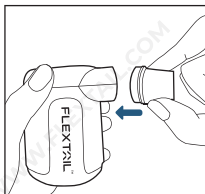
Operation Instructions



1. Connect the product to power cord.



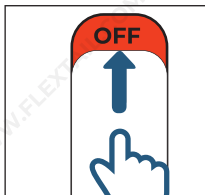
2. Connect the power cord to the 12V vehicle power supply.



3. Choose the suitable nozzle.



4. Connect the nozzle to the inflatable product.



5. Push the switch up.





<43°C (110°F°)

>-17°C (0°F°)

Parameter Information

Weight	125 g
Dimension	69*64*82±0.2mm
Inflation pressure	3kPa
Inflation speed	400L/min
Deflation pressure	2kPa
Power	36W
Package content	Power adapter, DC Car Power Cord, Manual, Storage bag , Nozzles
Certification	CE,FCC,RoHS

Product Usage Guide 【English】

EVO PUMP 2 outdoor pump

Product

(As shown in the drawing figures)



Operation

(As shown in the drawing figures)



Storage and transportation

(As shown in the drawing figures)



Care and maintenance

(As shown in the drawing figures)

Troubleshooting

If the product does not work:

- Please check if there is water or other liquid on the surface.
- Check whether the fan blade is stuck.
- Push the switch several times.
- Other questions? Please contact FLEXTAIL

Technology agents or contact us:

service@flectailgear.com

Reserve piece

There are no replaceable parts for this product other than the nozzles, power adapter, DC Car Power Cord, and storage bag.

⚠WARNING

- Do not use it for more than 10 minutes.
- Do not put it under the water for a long time.
- Keep the inflation port or the deflation port clean.
Do not put your finger into the inflation port or

- deflation port when the pump is working.
Do not watch the inflation port or deflation port
- when the pump is working.
Children under the age of 12 need to have adults'
- supervision when using the pump
Please check whether the air pump is functioning
- properly before use.

FLEXTAIL shall not be liable for any direct, indirect, incidental or other damages arising out of or caused by the use of the products. Users are responsible for their own actions and all the consequences that result from these actions.

Warranty terms

For the defects in material and workmanship of the product, the original retail purchaser of this product will be provided a warranty service for one year based on purchase data by FLEXTAILGEAR. If the Buyer discovers a covered defect, the buyer should return the product to the place of purchase. If this is not available, please return the product to the address specified by us. We will repair or replace the modified product at our discretion following the warranty terms.

We assume the above responsibilities in accordance with the essential guarantee terms during the warranty period. After the expiration of the warranty, the service will no longer be provided. We reserve the right to require proof of purchase for all warranty applications.

Warranties Exclusions

We do not warranty products against normal wear and tear, unauthorized modifications or alterations, improper use, improper maintenance, accident, misuse, negligence, damage, or if the Product is used for a purpose for which it was not designed. This warranty gives you specific rights, and you may also have other rights which vary from state to state. Except for expressly stated in this warranty, we shall not be liable for direct, indirect, incidental, or other types of damages arising out of, or resulting from the use of Product. This warranty is in lieu of all other warranties, expressed or implied, including, but not limited to, implied warranties of merchantability or fitness for a particular purpose (some states do not allow the exclusion or limitation of incidental or consequential damages or allow limitations on the duration of an implied warranty, so the above exclusions may not apply to you.)