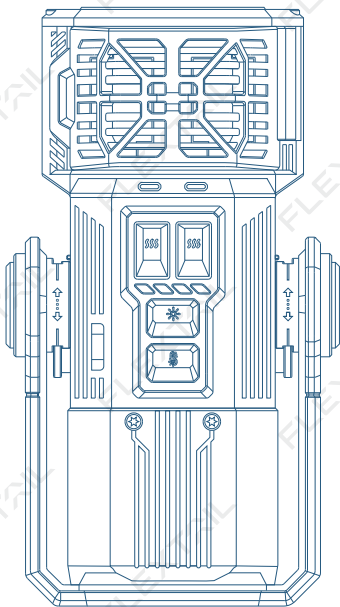


# FLEXTAIL™

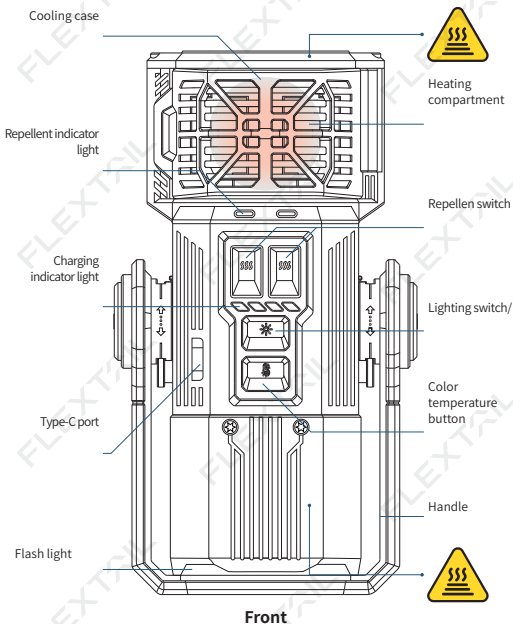


## EVO REPEL USER GUIDE



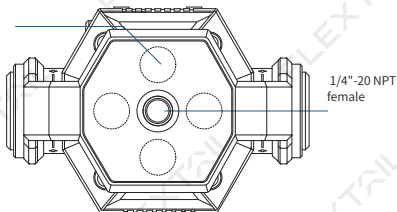
Please read the USER GUIDE carefully and keep safe when using the product.  
This product is only for adult and not a toy.

## PRODUCT INTRODUCTION



Front

Magnetic bottom



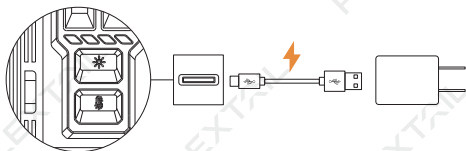
Bottom

## OPERATING INSTRUCTIONS

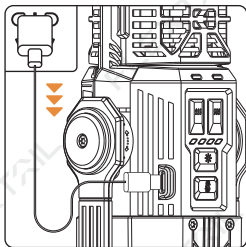


### NOTE:

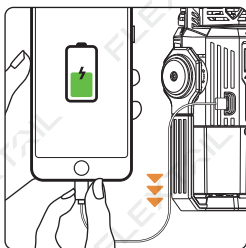
Please fully charge the product before first use.



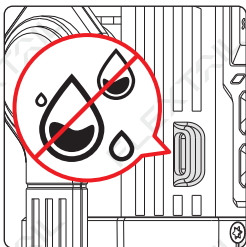
1. Locate the Type-C charging port on the back of the product, connect one end of the charging cable to the Type-C port and the other end to a power source/adaptor; the charging indicator will flash during charging and all four battery indicators will stay on after fully charged.



2. This product can be used as a power bank to charge other electronic devices



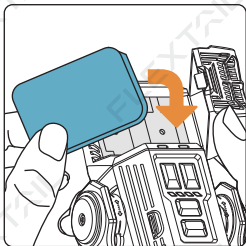
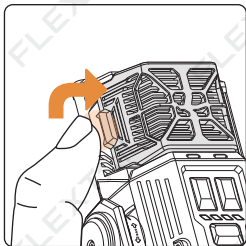
3. This product uses a waterproof Type-C port, please ensure that there is no liquid residue in the port during charging.



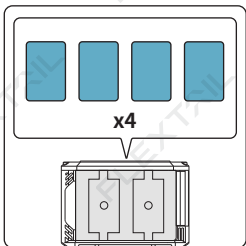
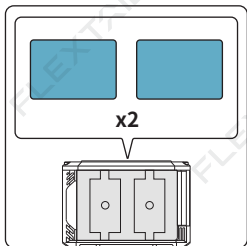
## ① PLACING/REPLACING MOSQUITO REPELLENT MAT(S)

### Placing Mosquito Repellent Mat(s)

Open the cooling case, and insert one or two repellent mats into device.

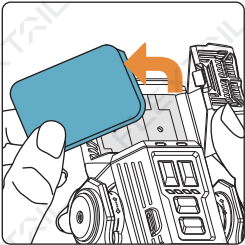
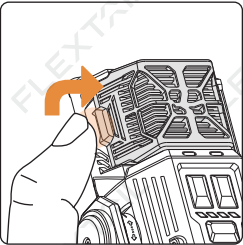


Heating compartment can accommodate 4 small size repellent mats or two big repellent mats.



### Replacing Mosquito Repellent Mat(s)

Please turn off the device and cool it down before replacing repellent mats. Then, open the cooling case, and replace old repellent mats with new ones.

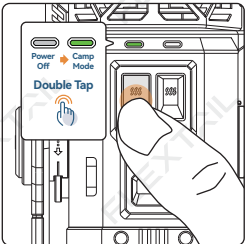


### ② ACTIVATING MOSQUITO REPELLENT FUNCTION

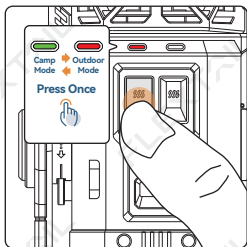
The left/right heating area in the heating compartment is controlled by the left/right repellent buttons respectively.

The corresponding left/right indicator lights up when turning on the left/right repellent function.

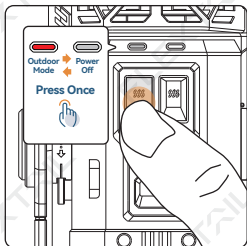
1. Double-click to activate camp mode mosquito repellent function. Green light is on. Device is heated to 165°C.



2. Single-click to transfer to outdoor mode mosquito repellent mode. Red light is on. Device is heated to 165°C.

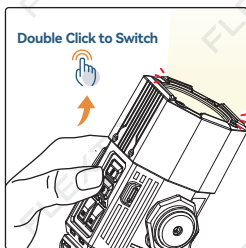


3. Click the left/right repellent button to turn off the left/right repellent function.

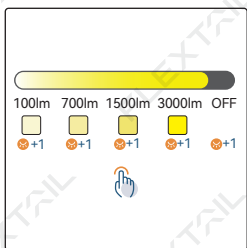


### ③ ACTIVATING LIGHTING FUNCTION

1. Double-click the lighting switch to activate lighting mode. Initial lighting brightness is 100LM.입니다.

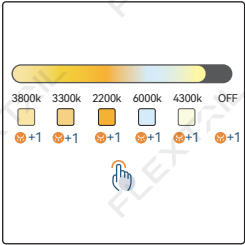
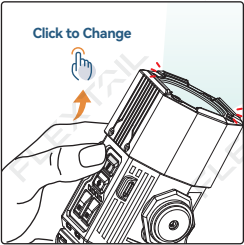


· Double-click switch on the lighting mode



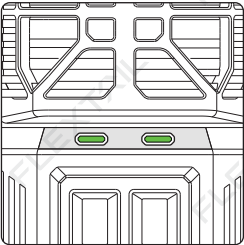
· Single-click to switch between different brightness levels

2. When the light mode is on, single click the color temperature button to adjust color temperature from 2200k-6000k.

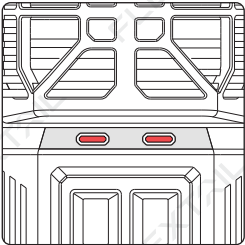


#### ④ INDICATOR LIGHT

Working Indicator Light지시등



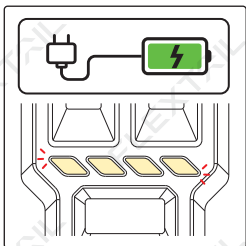
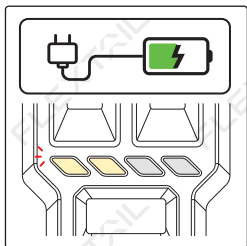
Camp Mode



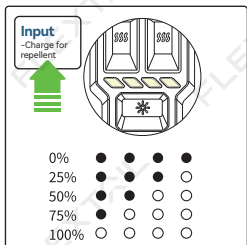
Outdoor Mode

#### Battery Indicator Light

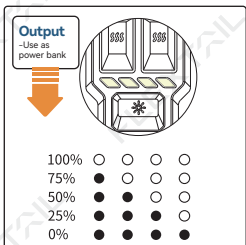
When charging, blinking indicator light indicates not fully charged, and four indicator lights on indicate complete charging. As shown in the following picture.



Each input/output power indicator light represents 25% of the electricity. All lights on indicates full battery, and all lights off indicates power out.



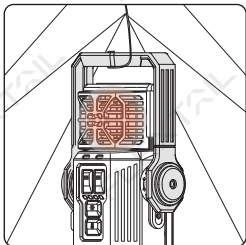
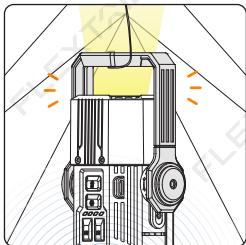
Input



Output

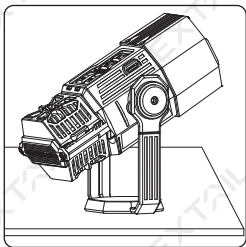
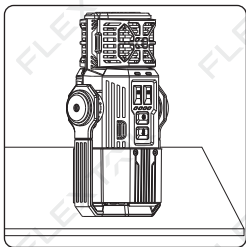
## ⑤ HOW TO PLACE & CONNECT THE BRACKET

### ① Hang

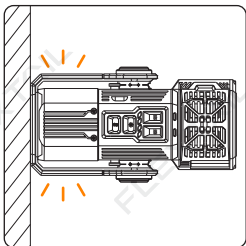
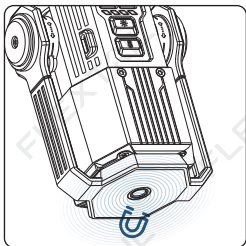




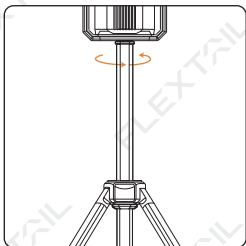
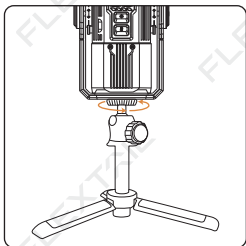
2 Rotate/pull out the handle for support



3 Magnet



4 1/4"-20 NPT Female



# PRODUCT SPECIFICATIONS/仕様詳細/产品参数/詳細規格/제품상세 사항

Size	145*84*56mm
Weight	490g (17.28oz)
Material	PA66/PC/Aluminium Alloy/Silica Gel
Waterproof	IPX5
Rated voltage	11.1V
Rated power	45W
Battery capacity용량	51.84Wh
Charging power	45W
Lighting brightness조명모드	100lm/700lm/1500lm/3000lm
Color temperature	2200k-6000k
Lighting running time	100h(100lm) / 20h(700lm) / 11h(1500lm) / 6h(3000lm)
Mosquito Repellent Heating Temperature	∞165°C/1h(Camp Mode)
	165°C (Outdoor Mode)
Mosquito Repellent Function Battery Life시간	Camp Mode*1: 28h Camp Mode*2: 14h
	Outdoor Mode*1: 15h Outdoor Mode*2: 8h
Package Contents	EVO REPEL*1, Type-C Charging Cable*1, User Manual*1

### **WARNING:**

- Do not remove the battery from the mosquito repellent;
- Do not use this product if the battery components are damaged;
- Do not leave the mosquito repellent in water for a long time;
- To reduce the risk of burns, close supervision is required when using this product near children;
- Keep away from children;
- Do not insert fingers, metal, or other foreign objects into this product;
- If the battery leaks, emits an odor, or deforms, stop using it immediately and dispose of it safely;
- Do not use mosquito repellent products in a closed tent or room with poor ventilation;
- Do not attempt to repair or modify the product without authorization. If servicing is needed, please contact FLEXTAIL;
- The device can only use recommended evaporative media. Using other media may produce toxicity or fire;
- The device has a heated surface for evaporative active media, so do not touch these surfaces during use.
- Please use the power adapter that meets national standards for charging.

### **HOW TO PLACE THE MOSQUITO REPELLENT:**

- It is best to place the mosquito repellent in the center of the mosquito-infested area;
- If it is windy, please place the mosquito repellent upwind from where you are sitting;
- Do not cover the mosquito repellent during use;
- If the mosquito-infested area is too large, insert two mosquito repellent tablets or use multiple mosquito repellents.

### **STORAGE AND TRANSPORTATION:**

- This product contains a lithium battery and is subject to specific transportation restrictions. Please check the packaging before transportation;
- Do not store the product for a long time with the battery completely discharged. Lithiumion battery products should be charged at least once every 3 months during storage;
- Do not keep the mosquito repellent in an environment above 60°C for a long time;
- When not in use, store it in a dry and room-temperature environment.

### **AFTER-SALES SERVICE AND WARRANTY**

#### **WARRANTY PERIOD:**

- FLEXTAIL provides a one-year warranty service from the date of purchase for customers who purchase products from authorized retailers, covering defects in materials and work-manship.

#### **WARRANTY COVERAGE:**

- The product is within the warranty period;
- Quality problems that occurred when the product left the factory, such as missing parts or surface damage.

#### **NON-WARRANTY COVERAGE:**

- The customer is unable to provide a valid proof of purchase (invoice or official receipt with purchase date and seal of purchase channel);
- Damage caused by unauthorized disassembly, modification, replacement, and repair of the product without the manufacturer's consent;

- f Facebook:** flextail  
**@ Instagram:** flextail\_official  
**▶ YouTube:** flextail  
**e www.flextail.com**  
**✉ Email:** service@flextailgear.com



**RoHS**



- Damage caused by human factors (scratches, falls caused by human error, etc.);
- Loss or damage caused during transportation, accidental accidents, or by third parties;
- Damage caused by the use of the product in an abnormal working environment or by not following the product's user manual.

### **WARRANTY SERVICE:**

- Customers can consult the company or authorized dealers for detailed warranty service information, and the after-sales staff will provide the nearest dealer's address and contact information to the customer;
- If the product falls within the warranty coverage, the after-sales staff will provide specific warranty services, such as replacement of spare parts or returns and exchanges;
- If there are any product-related issues, we will resolve them for you as soon as possible;
- To learn more about our after-sales service policy, please refer to the "After-sales Maintenance Policy".

### **DISCLAIMER:**

- The following situations are not covered by the warranty: normal wear and tear caused by use; unauthorized modification or alteration; improper use, maintenance, or care; accidents; negligence; intentional damage or use of the product for non-designated purposes;
- FLEXTAIL guarantees that all products have passed the factory inspection. If you believe that the product indeed has quality defects or omissions, please refuse to sign and contact FLEXTAIL's after-sales customer service for processing. If the product is confirmed to have no quality defects, FLEXTAIL will not accept the claim;
- If the product does not have quality problems, we do not support returns or exchanges without reasons, please understand;
- The company will not be responsible for any statements related to the product that are not directly made by the company.

## **AFTER-SALES SERVICE POLICY**

FLEXTAIL will provide customers with service under warranty terms.

### **AFTER-SALES INSTRUCTIONS:**

- For goods that are returned or exchanged without reason, please ensure that the product's outer packaging, accessories, gifts, instructions, and other items are complete and new, not activated, and free from any human damage that would affect resale.
- For goods returned or exchanged due to performance malfunctions, please ensure that the malfunction is not caused by your improper use (failure to use in accordance with the instructions or other reasonable ways of use). Whether there is a performance malfunction due to non-improper use shall be subject to FLEXTAIL's testing results.
- FLEXTAIL will return the refund within 7 natural days after receiving the product in accordance with the above return policy. FLEXTAIL will deduct the shipping fee from refund if customers return the product without reasons and not paying shipping fee.
- FLEXTAIL will send you the same product within 5 natural days after receiving the product in accordance with the above return policy.

### **STILL HAVE QUESTION?**

- Email us: [service@flextailgear.com](mailto:service@flextailgear.com)