

SCISSOR LIFT TABLES DRSSL & DRDSL



STANDARD FEATURES UNLESS SPECIFIED OTHERWISE:

- SMOOTH DECK TOP
- HYDRAULIC (VELOCITY FUSE) FALL-SCALE
- SAFETY STRIPING ON FOUR SIDES
- PUSH BUTTON CONTRACT NEMA ON 12' CORD
- BUILT IN HINGED TO FRAME SAFETY MAINTENANCE STOP

MODEL: _____

PLATFORM: Width 36" 42" 48" 60" 72" 84"
 Height 60" 72" 84" 96" 108" 120" 144"

Capacity Standards 2000 lbs. 3000 lbs. 4000 lbs. 5000 lbs. 6000 lbs. 8000 lbs. 10,000 lbs.
 12,000 lbs. 15,000 lbs. 20,000 lbs.

Lowered Height 8" 12" 14" 21" Special Lowered Height (Please indicate) _____

LIP #1: Width (ROLLER END) 60" 72" 84" Length 18" 24" 30" 36" Steel One Piece 2 Pieces No Lip

LIP #2: Width (ROLLER END) 60" 72" 84" Length 18" 24" 30" 36" Steel One Piece 2 Pieces No Lip

ELECTRICAL SPECIFICATIONS : (VOLTAGE / PHASE / HERTZ)

- 208V /1PH/ 60HZ 220-240V /1PH/ 60HZ 200-208V /3PH/ 60HZ 220-240V /3PH/ 60HZ 115-120V /1PH/ 60HZ
 440-480V /3PH/ 60HZ 550-600V /3PH/ 60HZ 220V /1PH/ 50 HZ 380-415V /3PH/ 50HZ

Power Unit: (Remote on 12 hose) 1 HP 3 HP 5 HP 7.5 HP 10 HP
 Paint Colour: Blue Black Gray

SPECIAL NOTES: _____

GENERAL OPTIONS:

Safety Accessories

- Electric Toe guards (Platform type 2)
- Warning Bell
- Warning Horn
- Flashing Amber Beacon (Mounted on power unit)
- Mechanical Pop-Up stop on fixed end only.
- Accordion Safety Skirting (External mount requires additional pit clearance)
- Guard-Rails (Please indicate sides)

Pit

- Curb Angles for pit

Lip Plates (See Notes)

- Lip#1 Lip#2
- Spring assisted ¹
 - Aluminium ²
 - Hydraulic Operated ³

Note 1: Standard on 8000lbs. Cap. & greater, and/or One piece lips 24" long or more.
Note 2: Available to 10,000 lbs. capacity.
Note 3: Available to 12,000 lbs. capacity.

Hydraulics

- 25' of Hydraulic Hose
- Return line oil Filter
- Immersion Heater for Oil Reservoir
- Arctic Oil (-27°C/18°F)
- Biodegradable Oil (not available with immersion heater)

Controls

- Up Travel limit Switch
- Down Travel Limit Switch
- Additional NEMA4 Push-Button
- Push button control on 4' cord with twist lock plug & weatherproof box (Mounted on post at "C" and "D")
- E-Stop per Push Button Control
- Two position Key Lock per Push Button Control
- Control Voltage 24 volts AC
- Manual Load Lowering Valve
- 25' long Push button cord
- Coil Cord Push button cord (25')
- Weather resistant Power unit Cover

Integrated Photo Electric Switches

- Photo-electric: 110-220v, 1 phase
- Photo-electric: 208-600v, 3 phase

Paint & Finish

- Other Colour than Standard for Table (Specify Code Pantone/CI _____)
- Rust Inhibiting Primer for Table
- Non Slip Grit Surface on deck
- Hot Dipped Galvanized Deck & Frame Curb Angles

Application: (Consult Factory)

- 25,000 lbs. Roll Over Capacity
- Interlock Swing Gates Side "A" Side "B"

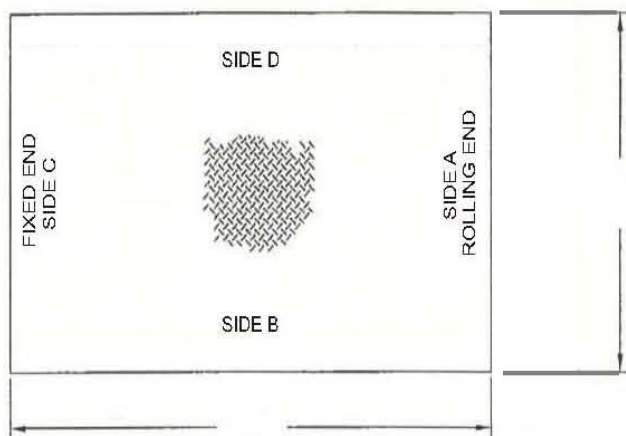
MODEL: _____ QTY: _____ ORDER NUMBER: _____ DATE: _____
 CLIENT: _____
 ADDRESS: _____
 PROJECT: _____ GENERAL CONTRACTOR: _____
 ARCHITECT: _____ DEALER: _____
 APPROVED BY: _____ DATE APPROVED: _____

- Standard Configuration -

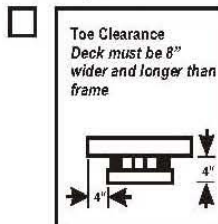
Lowered Height: + _____"
 Travel: + _____"
 Raised Height: = _____"

Pit Width: _____"
 Pit Length: _____"
 Pit Depth: _____"

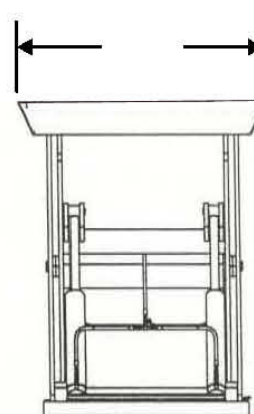
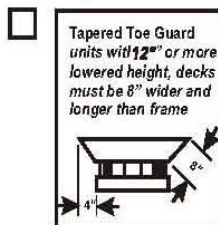
Note, if unit is pit mounted, vertical travel equals raised height.



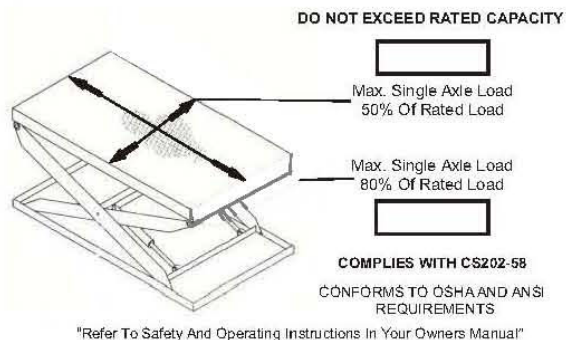
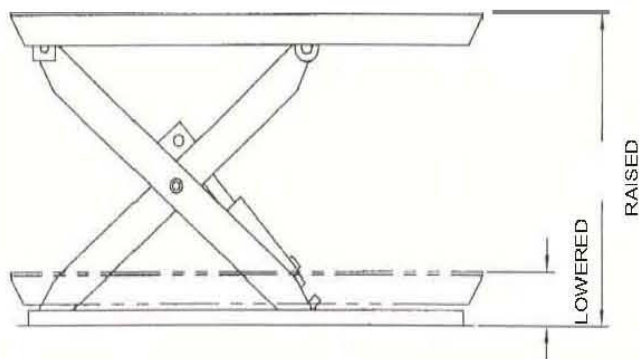
Style 2



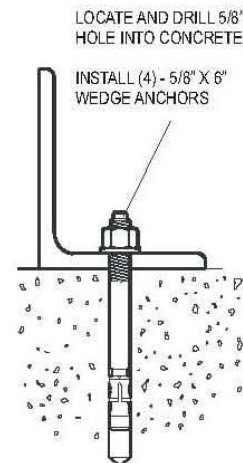
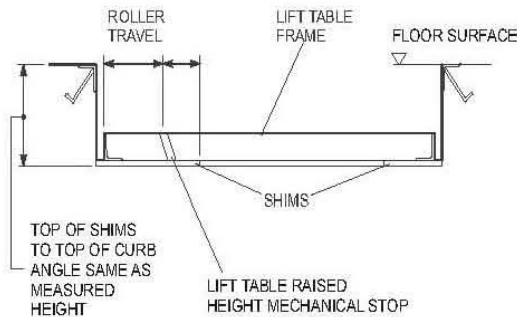
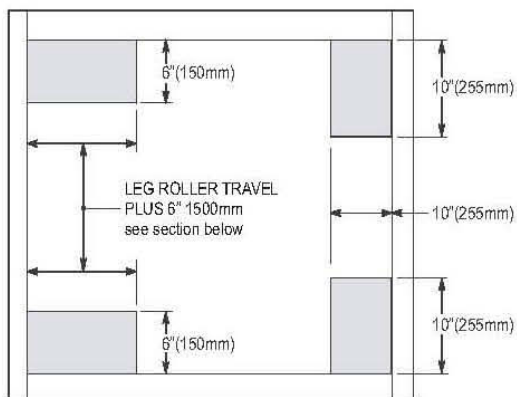
Style 3



Raised Load Rating



INSTALLATION OVERVIEW

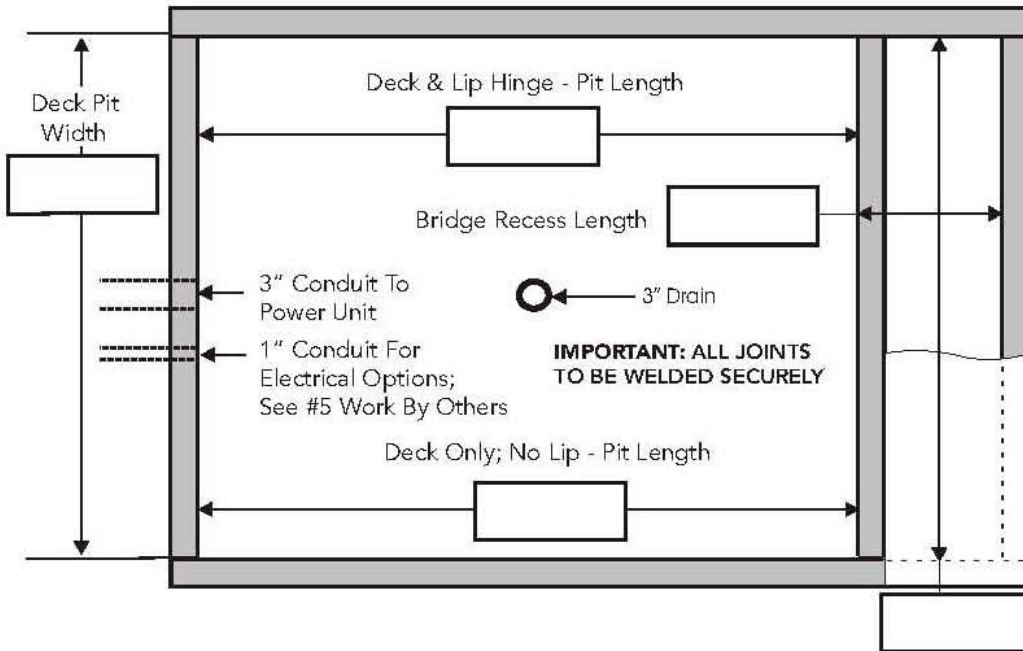


Initial _____ Date / /

- Pit Details -

TOP VIEW

Platform & Lip Same Width



PIT DIMENSIONS

Width Requirements:
ADD 1" Per Side To Deck Width For Unit Clearance

Length Requirements:
ADD 1" Per Side To Deck Length For Unit Clearance

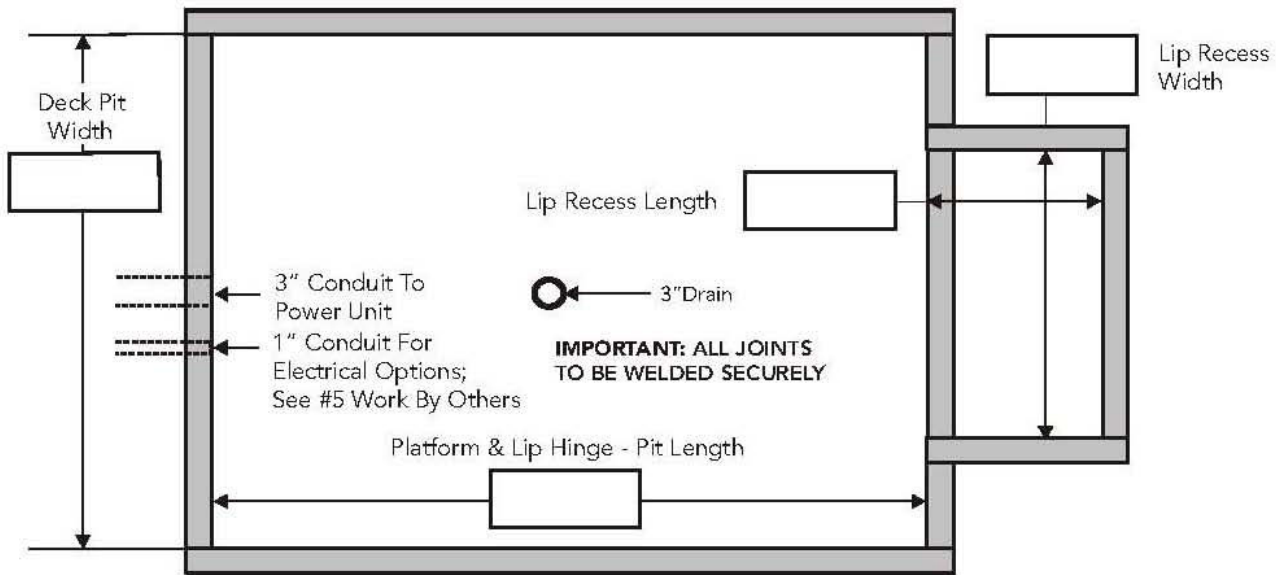
LIPS
ADD TO PIT DIMENSIONS ABOVE

Requires Additional 1" Pit Length For **NON-SPRING ASSIST LIP**

Requires Additional 2" Pit Length For **SPRING ASSIST LIP**

TOP VIEW

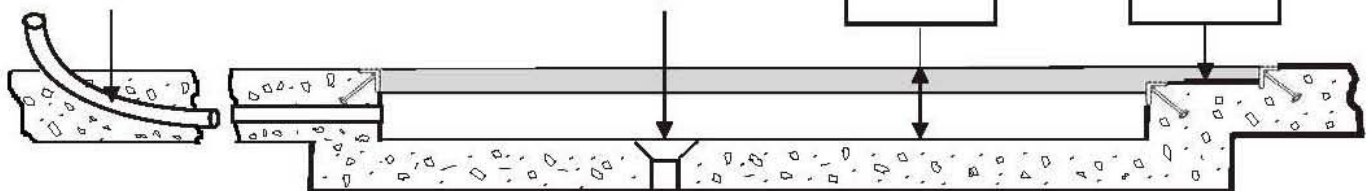
Platform Wider Than Lip



!! CRITICAL !!

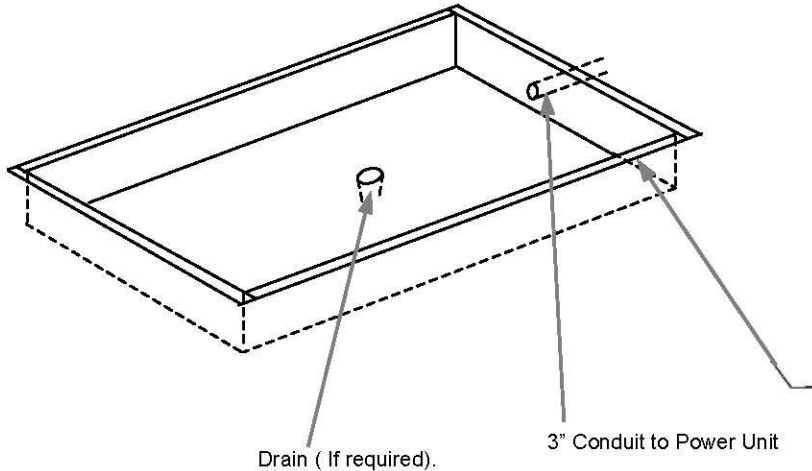
SIDE VIEW

3" Conduit Must Have Minimum 14 1/2" Radius Bend



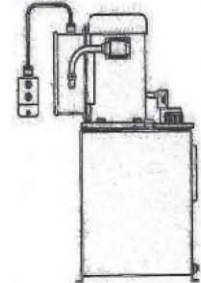
- Arrangement Drawing / Responsibilities -

ELECTRICAL DETAILS - ALL INTERIOR AND EXTERIOR ELECTRICAL AND HYDRAULIC CONDUITS, WIRING, DISCONNECT AND CONNECTION TO POWER TO BE SUPPLIED BY OTHERS IN COMPLIANCE WITH LOCAL CODES.



Note: For Floor Mounted Installation (Not Shown). Concrete Pad To Be Minimum 6" Wider and 6" Longer Than Dock Lift, And Concrete Pad To Be 8" - 10" Thick With Embedded Rebar, By Others And In Compliance With Local Codes.

Power Unit Mounted On Reservoir For Size Of Power Pak See Table Below. Unit Floor Mounted. NEMA 4 Control Station, Constant Pressure Type With 'Up' And 'Down' Buttons On 12'0" Straight Electrical Cord. Control Components Are Installed In NEMA 12 Rate Enclosure, Pre-wired And Dielectric Tested.

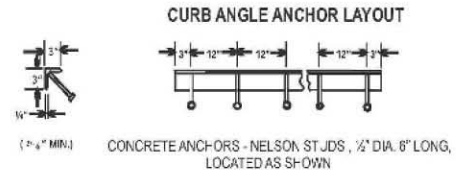


Power Unit Maximum Of 35'0" Away From Lift

STANDARD POWER PACK DIMENSION	1 & 3 HP	5 HP	7.5 HP	10 HP
Length	18"	20"	25"	25"
Width	15"	20"	20"	29"
Height	29"	29"	36 1/2"	31"
Shipping Weight	175 lb	190 lb	405 lb	460 lb

Note: 3 HP available for 4,000 - 6,000 lb capacity models only

Curb Angles (By Others Or Blue Giant)



WORK BY OTHERS

1. Reinforce Concrete To Suit Site Soil Requirements
2. One (1) Electric Disconnect For 3 HP to 10 HP Power Unit
3. All Construction Of Pit And Materials Shown (Bollards, Curb Angles, 3" Conduit To Pit, Drain Etc.)
4. One (1) 3" Conduit From Dock Lift Pit To Power Unit Location
Critical - 3" Conduit Must Have Minimum 14 1/2" Radius At Bends
5. One (1) 1" Minimum Conduit Required For Optional:
 - Electric Trip Bars
 - Up Travel Limit Switch
 - Down Travel Limit Switch
 - Push Button w/Disconnect Weather Proof Box and Twist Lock Plug On 4' Cord (Mounted On Post At 'C' & 'D')
6. Optional Hydraulic Lip Requires An Additional 3" Conduit

- i. Pull Optional Electrical Wiring, As Noted In #5 Work By Others, Thru 1" Conduit From Power Unit, Make Proper Connections
- ii. Pull Hydraulic Hose Thru 3" Conduit From Power Unit, Make Proper Connections
- iii. Shim Dock Lift As Required
Provide Concrete Anchor Bolts For Installing
- iv. Make Adjustments To Unit For Proper Operation
- v. Demonstrate Operation And Maintenance Of Dock Lift To Customer

SAFETY

To Meet OSHA**, ANSI Requirements And To Remove Some Legal/Insurance Issues That May Arise. It Is Required To Use At Minimum Wheel Chocks Anytime Loading Equipment Is Used At The Dock To Load/Unload Vehicles.

** Reference OSHA 1910.178 (k)(1) and OSHA 1910.178 (m)(7)

Initial Date / /