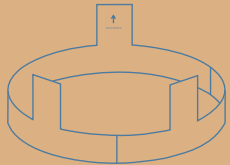


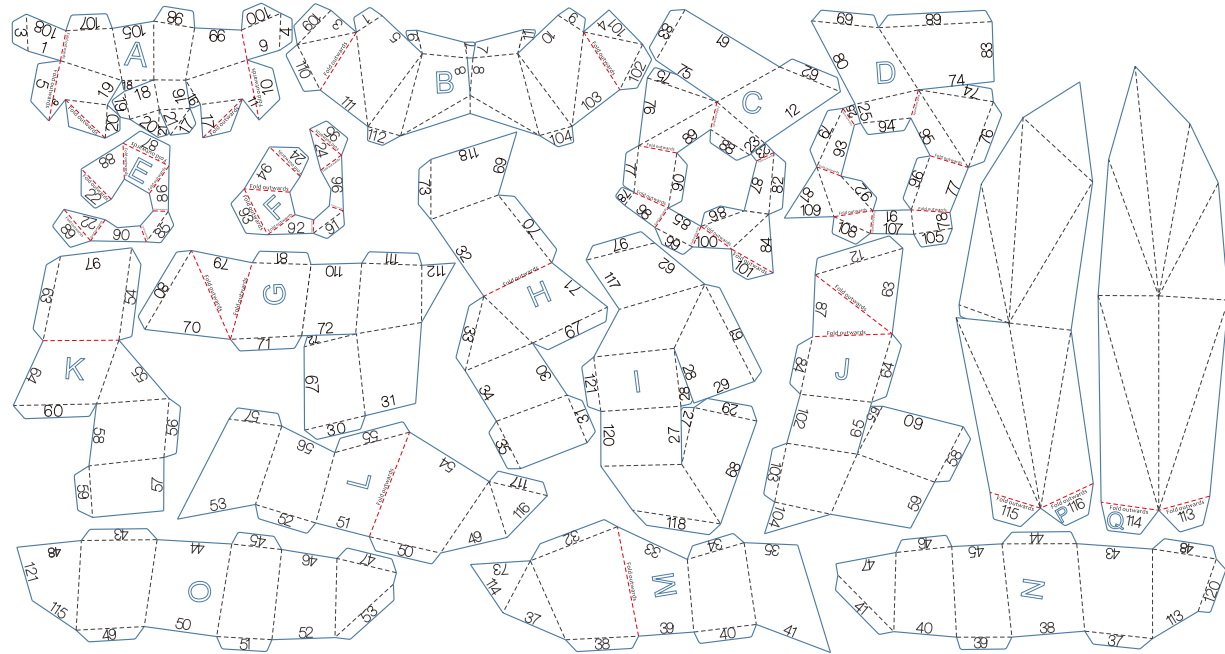
Rabbit

## INSTRUCTIONS



If the mask does not fit tightly on your head, you can build this headband by joining the three sections into a strip and adjust it according to your head size.

Please glue the three upright tabs to the inside of the mask to hold the headband in place.



1. Check that all pieces are available and align alphabetically.

2. Make sure the side with letters and numbers is facing yourself before you start. This is inward facing. Fold every piece according to the designated line, fold inwards towards yourself.

For areas which have the words 'Fold outwards', fold outwards.

The folded piece will form a shape where the printed words and numbers will be inward facing.

3. Find two pieces with the corresponding number (A. B. number 10 joins together with another number 10).

Test fit each part before you apply the glue onto 'Paste here'. Apply pressure to the join until the glue has set enough.

Tips:

1. Test fit each part before you apply the glue, you may damage the mask if you try to pull them apart once glued.

2. Please wait for the glue to dry in one area before you move on to the next.

3. Please try to keep hands clean to avoid leaving glue smudges on your mask.

For more tips, please visit our website.