

# The B.E.S.T. Quarterly Newsletter

*we're so glad you're here!*

## OUR B.E.S.T. INLINE IS TURNING 21!

Those of you who have been with us from the start will remember our motorhome - the big blue converted bus, with a lathe in the back for making our B.E.S.T. filters on the road.

We did this all while homeschooling the kids! It's been quite a journey, with customers turning into friends and friends becoming customers. We're grateful for everyone who has supported us along the way! We know a lot of people who were with us from the beginning are still telling their mates about us! As we approach this milestone, we're considering the best way to celebrate. One thing's for sure: we will be giving away twenty-one B.E.S.T. INLINES! Keep an eye on our social media channels for details on how to enter. If you're not already following us on Facebook or Instagram, now's the time to start!

*All the best,  
Colin Hoggood*



[@BESTRVwaterfilters](https://www.facebook.com/BESTRVwaterfilters)



[@best\\_waterfilters](https://www.instagram.com/best_waterfilters)

## Join us on our socials!

Keep your eyes on our social media over the next few months! We'll be having a 21st birthday giveaway!

# Table of Contents

<b>WE'RE TURNING 21!</b>	<b>P. 1</b>
<b>FAQ SPOTLIGHT: REDUCED FLOW</b>	<b>P. 3</b>
<b>B.E.S.T. DONATIONS OPEN!</b>	<b>P. 3</b>
<b>HOW DOES CARBON WORK?</b>	<b>P. 4</b>
<b>UPCOMING SHOWS</b>	<b>P. 4</b>
<b>NEW 3 YEAR WARRANTY!</b>	<b>P. 5</b>
<b>PRODUCT SPOTLIGHT: SPLITTER</b>	<b>P. 6</b>
<b>B.E.S.T. ON THE SHELF: PRODUCTS</b>	<b>P. 7</b>
<b>STORAGE AFTER THE HOLIDAYS</b>	<b>P. 8</b>
<b>HAVEN'T USED YOUR FILTER IN A WHILE?</b>	<b>P. 9</b>

*Click on the article you'd like to read, it will take you straight there!*

# FAQ Spotlight

## WHY IS MY WATER FLOW REDUCED?

Slow or low flow through a B.E.S.T. Inline can be due to a number of water quality issues. Most commonly, it is from a slow build-up of fine sediments that can't be back-flushed away; or from a build-up of minerals from taking on super mineralised bore water. Eg. some areas of Darwin use bore water mixed into the town supply. Their water at the moment is quite high in harsh minerals and are sticking to the membrane of the inline.

To try and get the flow going again – if you can do without the filter for a few days – you will need to get the Inline as dry as possible. Stand it on either end in a sunny/hot position for at least 3 days; allow all the water to drain out and get the membranes and carbon totally dry. Once this is dry, follow the commissioning steps (see video link below) to flush the build-up off the membranes.

This drying process can be quite successful in getting the inline flowing again (depending on the cause).



See how to commission your filter here!

## B.E.S.T. Donations Open!

Does your club or group offer a lucky member prize or raise money for charity? This year alone we have donated a B.E.S.T. Inline filter (valued at \$155) to Rod's Inc, Ulysses RV Club, Royal Flair Caravan Club, Essential Owners Caravan Club, Australian Camper Trailers Org., plus many more!

If you are interested in having a filter donated to your cause, email [info@bestwaterfilters](mailto:info@bestwaterfilters). We would love to help you out!

## *Filter Facts in A Flash*

### HOW DOES CARBON WORK?

Almost every caravan and RV water filter has some kind of carbon in it. Understanding how carbon works will help you to make an educated decision on when to replace your water filter, as well as what to look for when researching which filter is best for you.

Take a look at our 'Filter Facts in a Flash: Carbon' video to learn about how carbon works.

It's under a minute long!



[Click Here!](#)



## *Upcoming Shows*

### COME SEE US!

<u>Sydney Supershow</u>	<u>Let's Go QLD</u>	<u>Fraser Coast Expo</u>
 16-21 April	 5 - 9 June	 19 - 21 July
Rosehill Racecourse 	Brisbane Showgrounds 	Maryborough Showgrounds 
 Stand: 291	 Stand: 2696	 Stand: OS158

Keep your eye on [our website](#), we add new shows throughout the year!

## **B.E.S.T. has the BEST Warranty on the market!**

We pride ourselves on the quality of our products. It's true that no product in the world is immune to issues, but I'm proud to say that we have very few. This is largely due to the fact that we hand make every filter in our own factory, with all 15 components undergoing constant visual and physical inspection. Along with this, I personally select a random filter from our shelves and put it through pressure testing to ensure we are always up to standards.

Because I am so confident of the quality of the B.E.S.T. Inlines, I've decided to extend the warranty to 3 years\*! So now, B.E.S.T. Water Filters has a warranty three times longer than other filters can last!

Do you have an unregistered filter under three years old? You are still covered by warranty! So make sure to head to our Registrations page or click on the link below and [register your filter now.](#)

Remember, all new registrations go in the draw to win a \$100 monthly fuel voucher!

---

### **Win a \$100 fuel voucher!**

By registering your brand new Inline, you're covered by our three year warranty\* and go in to the draw to win a \$100 fuel voucher.

Good luck!

[CLICK HERE TO REGISTER](#)



\* 3 Year Warranty begins from original date of purchase.



# B.E.S.T. On The Shelf

## PRODUCT SPOTLIGHT

### ➤➤➤ **TAP SPLITTER**

Have you found yourself at a tap and somebody has already hooked up to it?

The easiest solution is to use a tap splitter! All you have to do is simply screw the splitter onto the tap and attach both lengths of hose and you're good to go! (*Probably best to have a chat to your neighbour beforehand, to avoid any bad blood.*)

Another handy use for the splitter is to help stop you from getting wet when you're packing up. When your hose is full of water and connected to the splitter, just turn the tap off, then turn the opposite side of the splitter on, and it will release the pressure. This will help keep you dry, and help your pack up go just that little bit smoother.



[PURCHASE HERE!](#)

The tap splitter comes with two different sized threads (20mm / 25mm [3/4" / 1"]), so if a showground or caravan park has either the standard or larger sized thread, you'll still be able to attach your splitter without issue. The two valves let you control the flow of your water, or shut off each connection individually.

**CHECK OUT OUR YOUTUBE  
VIDEO FOR MORE TIPS  
AND TRICKS!**



[Click Here!](#)

# B.E.S.T. On The Shelf

## OUR PRODUCTS

Did you know we have multiple styles of the B.E.S.T.? The main body is the same across all models, it's only the fittings that change.

Our filters come with a standard 3/4" BSP female threads, which means that you can swap over to a brass, plastic or reducer bush when needed. All you need to do is head to your local hardware store!

And you don't even have to worry about getting thread tape or paste\* because every filter comes with food-grade, blue washers ready to go.



### >>> THE BARE (322B)

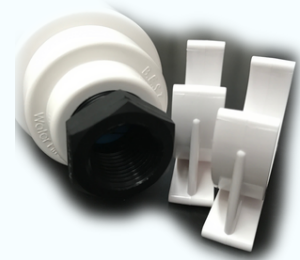
The base model - perfect for if you already have ends from a previous filter or another project.

### <<< THE BRASS (322HB)

The brass model is chosen for durability- for those whose filters get knocked around a bit more if they're attached to the hose outside.



Our fittings are made with lead-free brass right here in QLD!



### >>> THE T (322T)

This model is used for a more permanent, under-the-sink setup. It comes with a pair of 1/2" reducer bushes and a set of mounting clips, making installation easy as.



### >>> THE PLASTIC (322H)

Our standard, and most popular model. This filter comes with sturdy plastic ends, which are perfect for everyday use.

# Storage After the Holidays

## FROM THE BLOG!

Whether you're back from an Australia-wide road trip, the kids are back to school after the holidays, or you've just wrapped up cleaning your van post-long weekend travels, one crucial question remains: How do you store your B.E.S.T. Inline when it's not hitting the road?

Storing your B.E.S.T. Inline is a breeze, but it's a vital step to ensure no unwelcome visitors find their way in during downtime. An effortless solution is to grab a short piece of hose and clip it onto both ends of your filter, essentially creating a 'closed circuit'. This not only keeps critters out, but also prevents any unwanted water leakage.

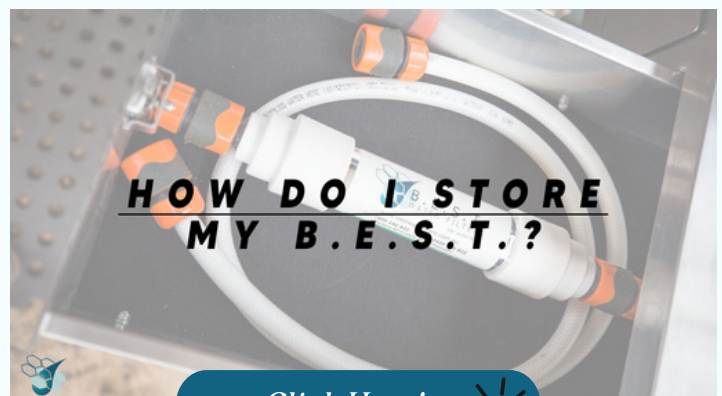
And here's the beauty—no need for refrigeration! Thanks to our exclusive SilverSafe® technology, any bacteria have already been dealt with, so no nasties will grow during the off period.

Another nifty storage trick involves grabbing two extra plastic hose connectors and blocking off one end of each connector with silicone, wait until it's dry, and then clip them onto each end of your filter. This option is perfect if space is tight, making your filter as compact as possible.

Feel free to keep your filter stored this way for as long as needed. Just remember, before hitting the road again, give your Inline a quick back-flush to ensure it's in tip-top shape, flushing out any lingering old water.

Happy travels!

*Are you more of a visual learner? Then check out our YouTube video! We walk you through how we keep our filter stored during periods of non-use. And the best part is, it's under a minute long!*



[Click Here!](#)





## Haven't used your filter in a while?

### JUST BACK-FLUSH IT!

There's not much to worry about with the B.E.S.T.! I usually just give it a quick back-flush to wash away any water that has been sitting in the filter and it's set to go. However, I do recommend to give your drinking water hose a good flush before connecting it to your filter or van as the hose doesn't have any way to control bacteria growth. After your pack up, the hose has no way to drain completely, therefore leaving enough moisture for bacteria to continue to breed. So wherever you're connecting up to, flush the tap before you connect your hose to it, then flush both your longer and shorter drinking water hose before connecting it to the filter or the van.

You don't want to take any critters away with you!



Stay safe from e.COLI and his friends!

Thanks for reading!

### Contact Us

Have any questions about the B.E.S.T.?

Phone: 1800 240 822

Email: [info@bestwaterfilters.com.au](mailto:info@bestwaterfilters.com.au)

[www.bestwaterfilters.com.au](http://www.bestwaterfilters.com.au)

[CONTACT](#)



Written by  
**Colin Hopgood**

Proud founder and director of B.E.S.T. Water Filters since 2001.