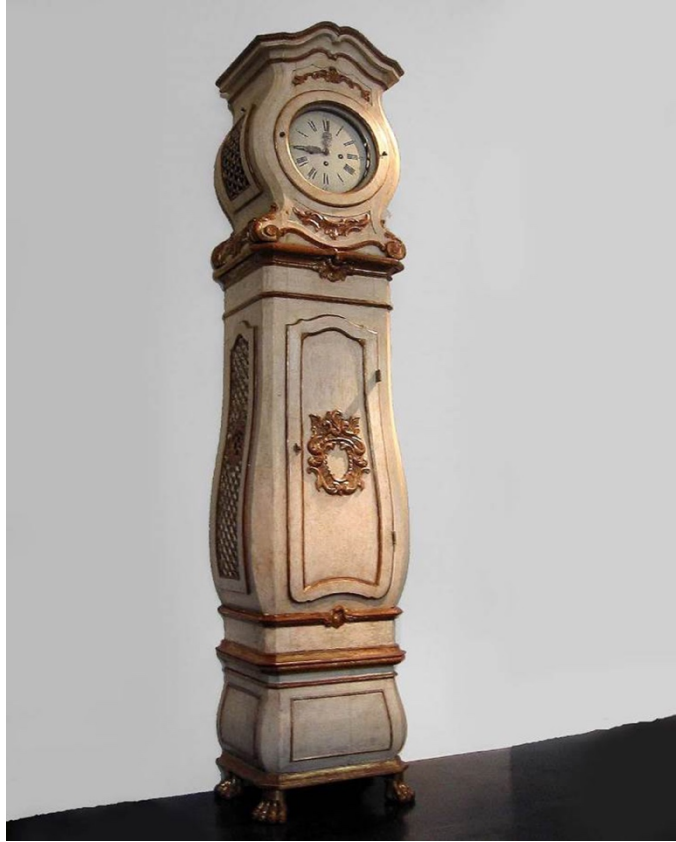


PHILIP STITES



Condition Report Available

CO03-233/38000

ROYAL DANISH ROCOCO PAINTED AND PARCEL GILT CLOCK

the circular white enameled face within moulded and shaped hood, the sides fitted with floral studded, fret access doors, terminating in carved foliate volute scrolls, over bombay shaped pendulum case with hinged door and with similar side access panels, on shaped and moulded plinth raised on carved lion paw feet, the whole retaining original painted finish

Mid 18th Century

The pierced iron hands moulded and inscribed with Frederick V's and Queen Julianne Marie's crowned monogram

Overall dimensions: 18" deep x 23" wide x 112 ½" high