

*STUDIO*

**MALÜNE**

**SUNSHINE ROAD**

*202°*

**WOMEN'S LUXURY RESORT WEAR COLLECTION**

**[WWW.MALUNE.COM](http://WWW.MALUNE.COM)**

**MALŪNE**

*Resort Wear Collection*

**ABOUT THE BRAND**

The idea for MALŪNE began many moons ago in a little idyllic beachside resort in the middle of the Pacific Ocean, inspired by summer islands (especially Hawaii and Tahiti), white beaches, and other features of natural beauty in far-off places.

MALŪNE is designed in-house at the BERLIN head studio and produced in India and Greece. We collaborate with family-owned factories and makers that align with our values of transparency, sustainability, and our ethical journey.

Our designs capture the feelings of traveling through time and space, with all the different facets of flora and fauna - and translate them into a free-spirited esthetic. From breezy kimonos and dresses, we offer the colorful abundance of happiness you need to feel at ease. Malune is known for its beautiful arty mixture of prints; natural, soft and feel-good textures; and cutting-edge silhouettes that are comfortable and easy to wear.

*Based and created between Berlin + Hawaii*

**ABOUT THE DESIGNER**

Berlin-born designer FRIDA WEYER completed her studies at the international fashion school ESMOD in Berlin. Upon graduation, she worked for several years in various sectors of the fashion industry before launching her first label that bears her name FRIDA WEYER in October 2008. She presented her debut collection at Mercedes-Benz Fashion Week in Berlin. That same year, she won the PREMIUM Young Designers Award as well as the New Faces Award. At her fashion shows, fashion journalists like Suzy Menkes (International Herald Tribune), Franca Sozzani (Vogue Italy) and many others from magazines like Elle, Harper's Bazaar, InStyle and Glamour attended her shows she has been presenting twice a year at MBFWB. In 2013 she became creative director of MEISSEN COUTURE, since 2016. She designed luxury embroidery gowns and created dreamy fashion installations. She collaborated with VOGUE ITALIA's Franca Sozzani and team, presenting shows at Mailand Fashion Week for 3 seasons. [Gallery here](#)

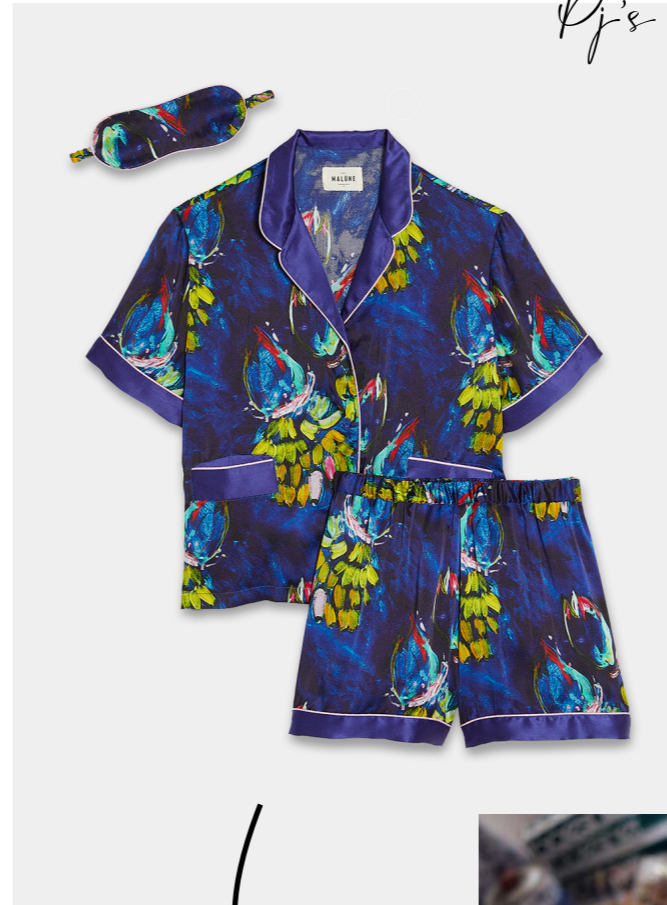
AS SEEN IN

**VOGUE**

*Frida is working in Luxury since she is 26*



*Camillie*



*Pj's*

*Painted In-House !!*



*Kimonos*

*.. and all kinds of Beach Wear*

*Sun Dresses*



*Mostly shoot on Hawaii! Our big Love and main Inspiration. Also close to our creative Studio on Maui Island.*



# MALŪNE

## STORY & STATEMENT

Malune is known for its beautiful arty mixture of prints; natural, soft and feel-good textures; and cutting-edge silhouettes that are comfortable and easy to wear. All of the styles can be seamlessly mixed and matched, and are designed to be worn with your everyday wardrobe.

Inspired by summer islands, white beaches, and other features of natural beauty in far-off places, the story began many moons ago in a little idyllic beachside resort in the middle of the Pacific Ocean - by dreaming and remembering ...

Remember long days on the beach playing until it gets pretty chilly and the sun kisses the ocean goodnight; hide and seek in the steaming depths of the forest; raspberries on our fingertips; a run through a whispering cornfield; the multitude of colors of all the beautiful flowers crowning our heads, covered with the dust of mother Earth; the taste of melon juice and salt on our lips.

OUR PHILOSOPHY was born...

We will never forget the magic of nature in our childhood days. Nothing is as deeply saved in our memory as the smell of a pinecone, the look into the eyes of a deer, snowflakes dancing in the sky. The whole world in its incredible beauty.

With our work we honor the immense force of this wonderful planet and aim for a peaceful togetherness with our tribe. With those who care .Who care about our beautiful life and all the living creatures that call this planet their home. Care about what they wear, what they eat - in short: what they consume.

We want to contribute to the future of our children in a positive way. We therefore choose every part of our process - from our materials to our factories - with great care.

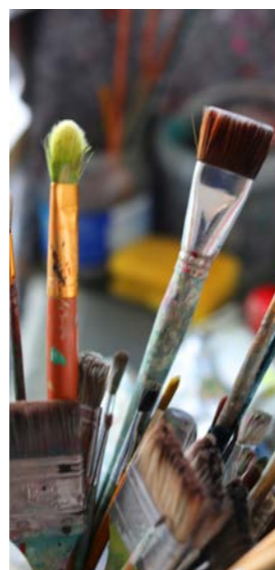
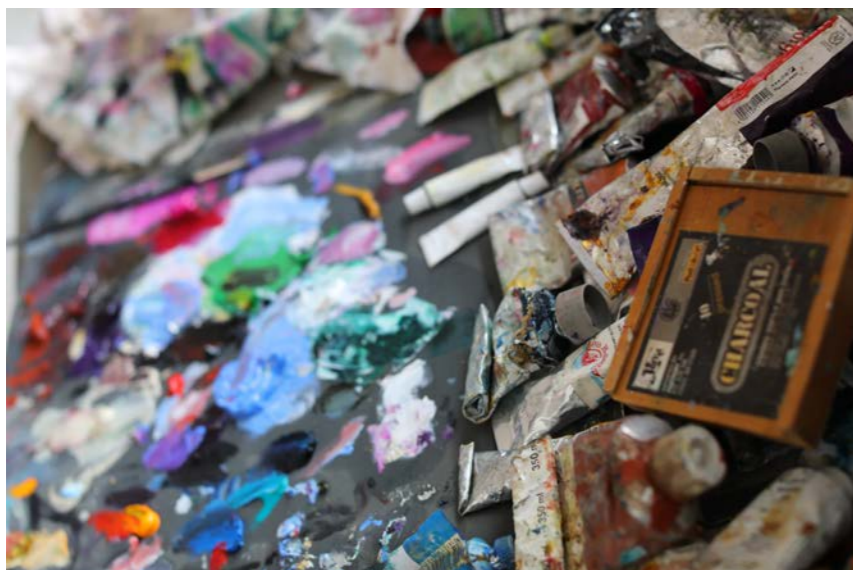
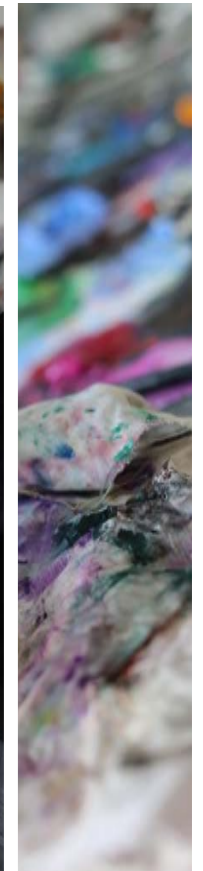
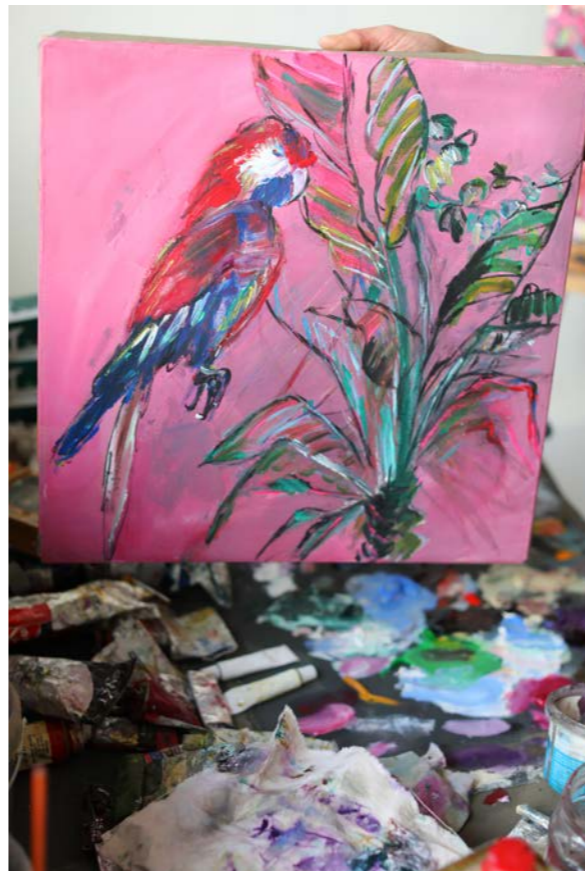
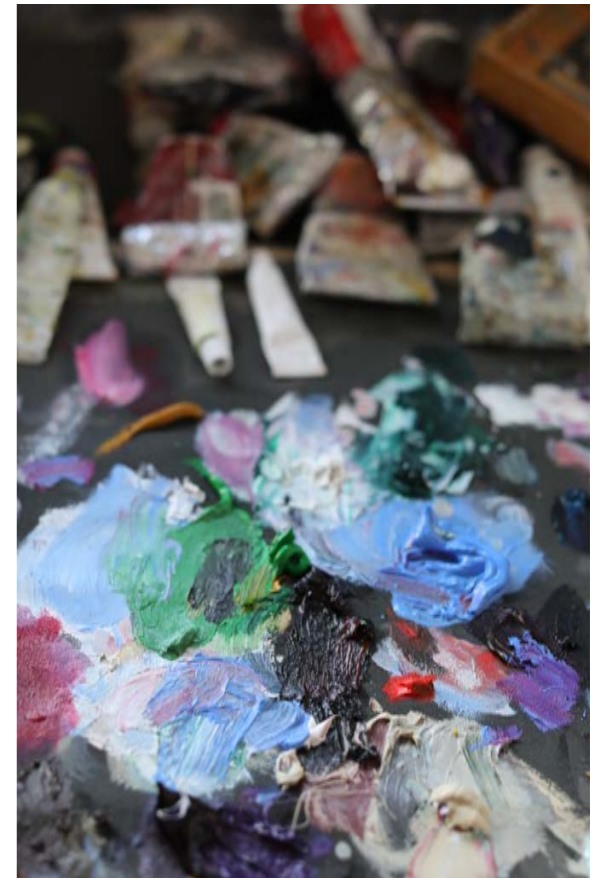
Our designs capture the feelings of traveling through time and space, with all the different facets of flora and fauna - and translate them into a free-spirited aesthetic. From breezy, painted kimonos to cozy sweats, we offer the colorful abundance of happiness you need to feel at ease.

**Paradise found. MALUNE.**

Shop the latest collection from MALUNE, ranging from kimonos, dresses and pjs.



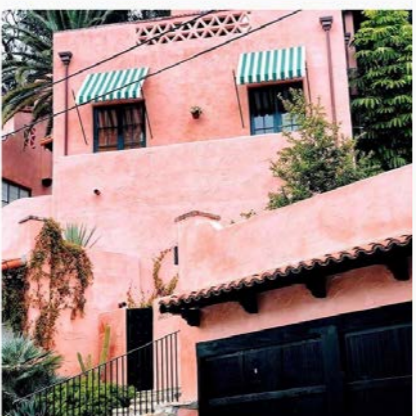








Instagram  
@malune\_thelabel











**WAIOLA  
PRINTED SILK KIMONO**  
\$371 | €320

01010002-0220

**Long-sleeved printed silk kimono**

The wonderful print on the WAIOLA kimono has been hand-painted by our in-house creatives. This short kimono with tapered sleeves is almost too elegant just to lounge in at home. Wear it after a relaxing bath, or team it with jeans and a top to lend instant elegance to your look. Its amazing green color is an homage to the exotic landscape of Hawaii.

Size



**DESCRIPTION**

Short silk kimono  
Artistic, hand-painted print  
Wide, long sleeves  
Shawl collar - 2 patch pockets on the front  
Belt with belt loops  
Length: 92.5cm (for a size 1)

**SIZE & FIT**

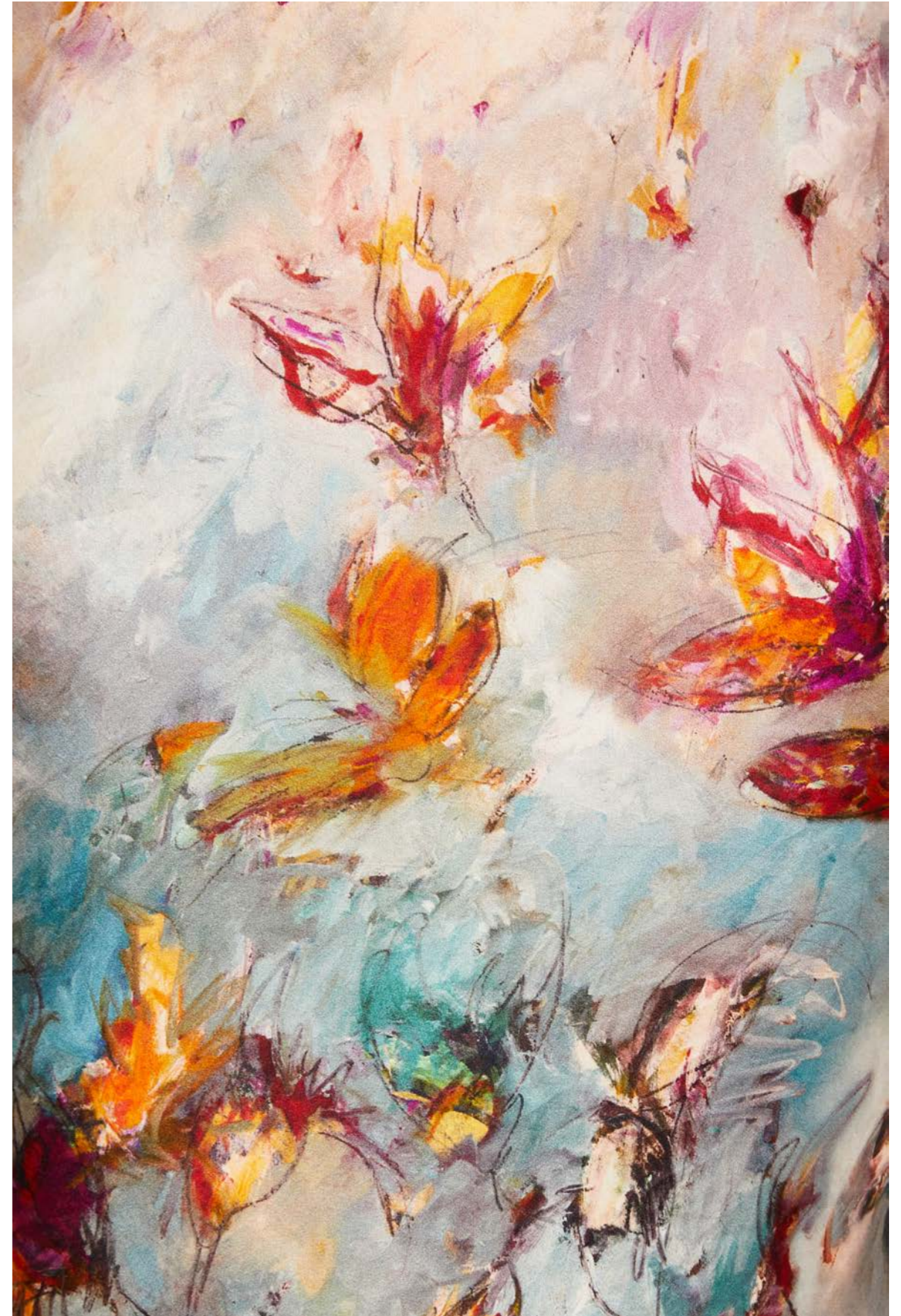
Fits true to size, choose your usual size  
Intended as a relaxed fit, use the tie belt to cinch in at the waist  
Model is 178cm/ 5'10" and wears a size 1

**DETAILS & CARE**

Artistic, hand-painted print  
Slips on  
100% silk  
Cold handwash  
Fair Trade Made in India











**SAFIYA  
COTTON-SILK KIMONO  
(LIMITED EDITION)  
\$278 | €240**

01010005-1020

**Long 'butterflies & lilies' artistic cotton-silk kimono**

Cut from an airy cotton-silk fabric, the long SAFIYA kimono has a relaxed fit and comes with a self-tie belt to define your waist. Painted in-house from an artist on canvas and then digitized for digital printing it is a unique design that is only produced 40 times. Buy it quickly before it's gone!

Size

1 2

**DESCRIPTION**

Long robe in an elegant bohemian cut  
'Butterflies & lilies' print on ocean color  
Long sleeves with cuffs, slightly volant  
Shawl collar  
Belt with belt loops  
Length: 142cm (for a size 1)

**SIZE & FIT**

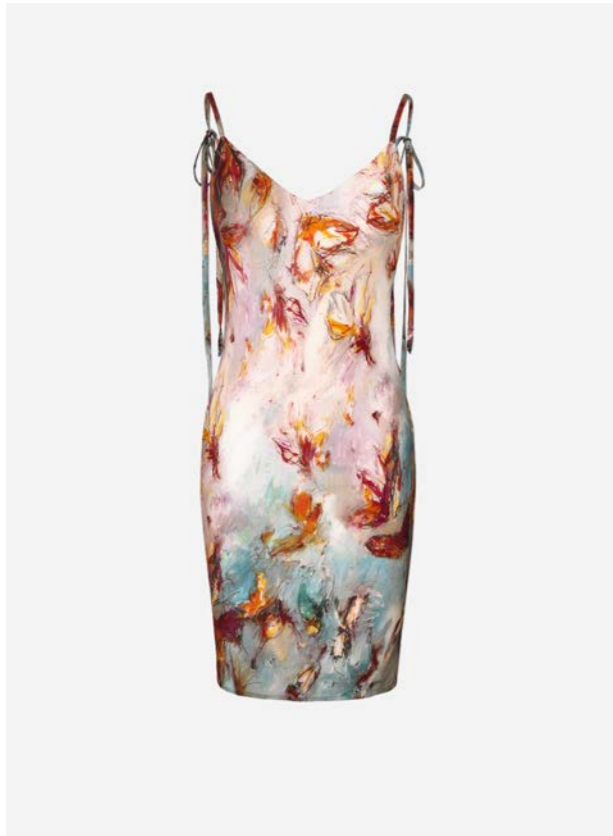
Fits true to size, choose your usual size  
Intended as a relaxed fit, use the tie belt to cinch in at the waist  
Model is 178cm/ 5'10" and wears a size 1

**DETAILS & CARE**

Artistic, hand-painted print  
Slips on  
100% silk  
Cold handwash  
Fair Trade Made in India





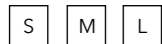


**SAYA**  
**SILK SILP DRESS**  
**\$168 | €145**

01210001-1020

**Long 'butterflies & lilies' artistic cotton-silk kimono**  
This silk slip dress with its artistic, hand-painted print will swing your day to fun in no time. Let colors into your days!

Size



**DESCRIPTION**

Straight neckline  
Spaghetti straps for tying a bow at the shoulder or back  
Straight back at chest height  
Figure-hugging cut  
Length: to mid-thigh  
Length: 76.5cm (in a size M)

**SIZE & FIT**

Fits true to size, choose your usual size  
Those with a curvy figure may wish to choose the next size up  
Cut for a slim fit  
Lightweight, non-stretchy silk fabric  
Model is 175cm/ 5'9" and wears a Small

**DETAILS & CARE**

Artistic, hand-painted print  
Slips on  
100% silk  
Cold handwash  
Fair Trade Made in India











**LILINOE**  
**SILK KIMONO**  
**\$417 | €360**

01010004-0220-O

**Long-sleeved printed silk kimono**

Made from a fluid 100% silk, this kimono gently plays around your body. Patterned with an iconic botanical print the LILINOE kimono is a tribute to Hawaii and its lush flora, where hibiscus flowers and tiaré flowers blossom. With its sunny attitude, it has everything you need to feel at ease: wide sleeves, a loose fit and a sash belt to cinch in your waist.

Size



**DESCRIPTION**

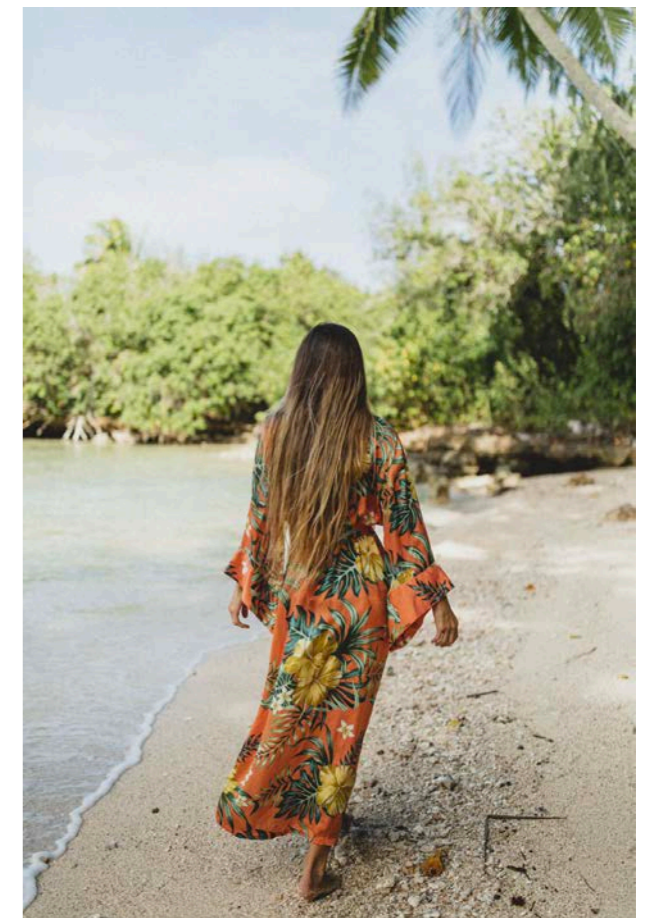
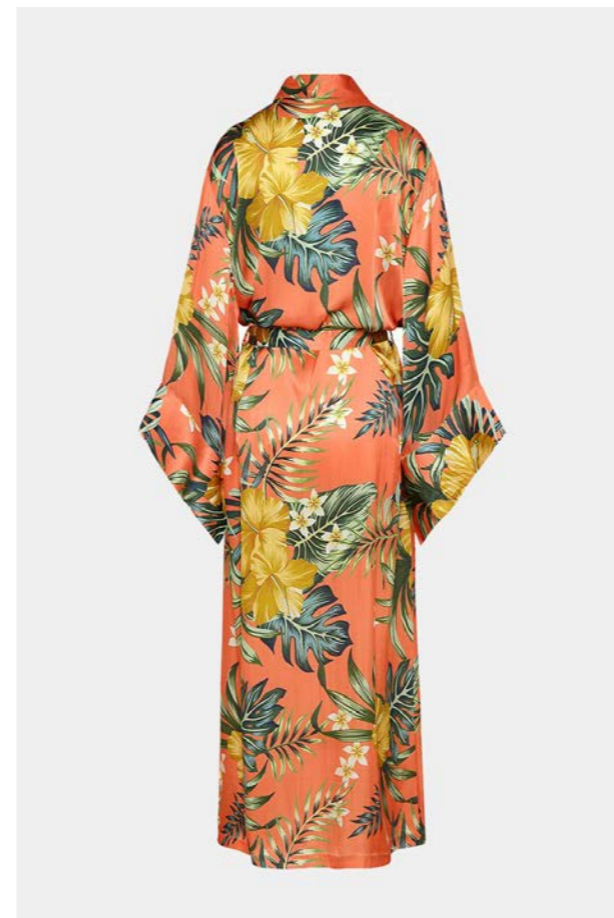
Long robe in an elegant bohemian cut  
Frangipani print on flamingo color  
Long sleeves with cuffs, slightly volant  
Shawl collar  
Belt with belt loops  
Length: 142cm (for a size 1)

**SIZE & FIT**

Fits true to size, choose your usual size  
Intended as a relaxed fit, use the tie belt to cinch in at the waist  
Model is 178cm/ 5'10" and wears a size 1

**DETAILS & CARE**

Slips on  
100% silk  
Designer Color: Flamingo  
Cold handwash  
Fair Trade Made in India







**LILINOE  
SILK KIMONO**  
\$417 | €360

01010004-0220-B

**Long-sleeved printed silk kimono**

Made from a fluid 100% silk, this kimono gently plays around your body. Patterned with an iconic botanical print the LILINOE kimono is a tribute to Hawaii and its lush flora, where hibiscus flowers and tiaré flowers blossom. With its sunny attitude, it has everything you need to feel at ease: wide sleeves, a loose fit and a sash belt to cinch in your waist.

Size



**DESCRIPTION**

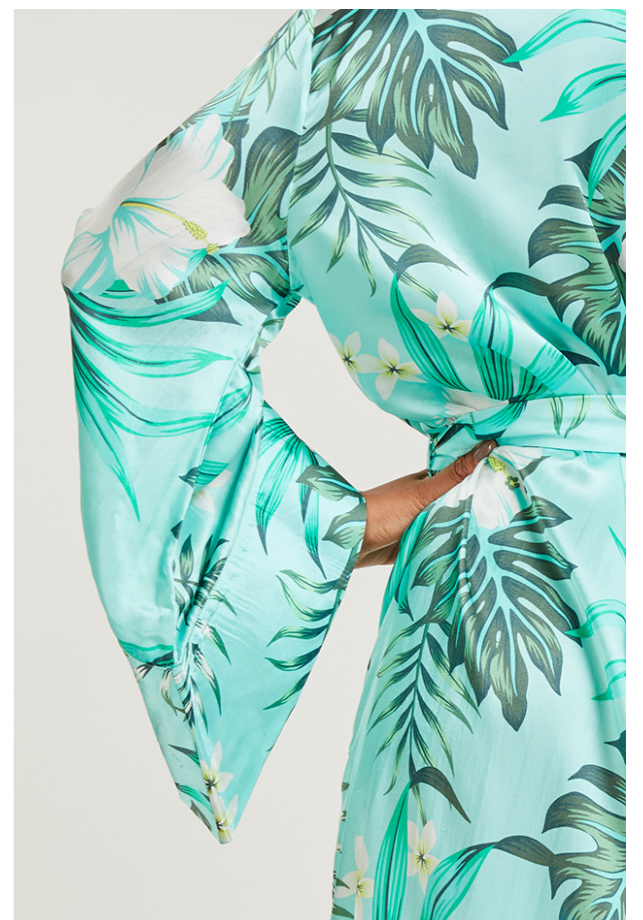
Long robe in an elegant bohemian cut  
Frangipani print on flamingo color  
Long sleeves with cuffs, slightly volant  
Shawl collar  
Belt with belt loops  
Length: 142cm (for a size 1)

**SIZE & FIT**

Fits true to size, choose your usual size  
Intended as a relaxed fit, use the tie belt to cinch in at the waist  
Model is 178cm/ 5'10" and wears a size 1

**DETAILS & CARE**

Slips on  
100% silk  
Designer Color: Ocean Blue  
Cold handwash  
Fair Trade Made in India











**PUANANI**  
**COTTON-SILK KIMONO**  
**\$220 | €190**

01010003-0220

**Short-sleeved Hawaii printed cotton-silk kimono**

This kimono makes your day, promise! It is the perfect companion for your pink smoothie bowl. Cut from a silk-cotton blend, the short PUANANI kimono has a relaxed fit and comes with a self-tie belt to define your waist. The PUANANI lives up to its name, which means 'beautiful flower'. The iconic hibiscus flower print is inspired by its origin: Hawaii. Wear it on your favorite vacation or lounge in it at home.

Size



**DESCRIPTION**

Short silk kimono  
Frangipani print on bubblegum color  
3/4 sleeve length, slightly flared  
Shawl collar - 2 patch pockets on the front  
Belt with belt loops  
Length: 95cm (for a size 1)

**SIZE & FIT**

Fits true to size, choose your usual size  
Intended as a relaxed fit, use the tie belt to cinch in at the waist  
Model is 178cm/ 5'10" and wears a size 1

**DETAILS & CARE**

Designer Color: bubblegum  
Slips on  
Delicate cotton-silk blend  
80% cotton, 20% silk  
Cold handwash  
Fair Trade Made in India











**MOANI  
SILK PAJAMA SET**  
\$318 | €275

01220002-1020

**Banana hand-painted silk pajama set**

We go bananas - these short-sleeved pajamas look like an artwork! The pajamas are cut from blue 100% silk and printed with banana plants all over. A beautiful pink piping contrasts the different shades of blue. Two little pockets on the pajama top offer space for your iPhone or a lip balm. The set comes with a matching sleeping mask.

Size



**DESCRIPTION**

Artistic painting on true blue background with bananas  
Loose fit  
Short sleeves  
Slim reverse collar with slight curves  
Piping at front, shoulder, yoke, and cuffs  
Comfortable elasticated waist at shorts  
Classic sleep mask shape w/piping

**SIZE & FIT**

Cut for a loose fit  
Non-stretchy silk fabric  
Model is 178cm/ 5'10" and wears a size S

**DETAILS & CARE**

Artistic, hand-painted print  
100% silk  
Cold handwash  
Fair Trade Made in India











**MALU  
SILK PAJAMA SET**  
\$330 | €285

01220003-1020

**Parrot hand-painted silk pajama set**

Pretty in pink! In these 100% silk pajamas, your life will feel like summer all year round. Inspired by the vibrant color palette of the Hawaiian flora and fauna, this set includes a short-sleeved, collared shirt with two integrated pockets and white piping, together with elasticated drawstring shorts. Wear yours on a beach walk with sunglasses and barely-there sandals, or with the matching sleeping mask on a Sunday in bed.

Size



**DESCRIPTION**

Artistic painting on pink lemonade background with a parrot and palms  
Loose fit  
Long sleeves  
Slim reverse collar with slight curves  
Piping at front, shoulder, yoke, and cuffs  
Comfortable elasticated waist at shorts  
Classic sleep mask shape w/piping

**SIZE & FIT**

Cut for a loose fit  
Non-stretchy silk fabric  
Model is 178cm/ 5'10" and wears a size S

**DETAILS & CARE**

Artistic, hand-painted print  
100% silk  
Cold handwash  
Fair Trade Made in India











**NOHEA**  
**SILK PAJAMA SET**  
**\$419 | €362**

01220001-1020

**Parrot hand-painted silk pajama set**

Pure 100% washed silk in dark blue like the night sky above Hawaii, parrot flowers all over and a sleep mask to say goodbye to the world. Wait. These pajama trousers can be combined perfectly with a camisole and a trench. Or what about the collared pajama shirt with jeans and sneakers? The turquoise piping matches the denim blue perfectly.

Size



**DESCRIPTION**

Artistic painting navy blue background with a parrot at the back  
Loose fit  
Long sleeves  
Slim reverse collar with slight curves  
Piping at front, shoulder, yoke, and cuffs  
Comfortable elasticated waist at pants  
Classic sleep mask shape w/piping

**SIZE & FIT**

Cut for a loose fit  
Non-stretchy silk fabric  
Model is 178cm/ 5'10" and wears a size S

**DETAILS & CARE**

Artistic, hand-painted print  
100% silk  
Cold handwash  
Fair Trade Made in India







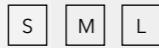
**LILIBETH  
SILK SLIP DRESS**  
\$226 | €195

01210002-1020

**Exotic leaf-printed silk slip dress**

The minimally detailed, figure-skimming silhouette is designed with a V-neckline, adjustable tie straps and turns to reveal a low-cut back. Layer yours over a white tee or under a cardigan.

Size



**DESCRIPTION**

V-neck in front  
Spaghetti straps for tying a bow  
Deep V back Figure-hugging cut  
Length: mid-calf  
Length: 118cm (in a size M)

**SIZE & FIT**

Fits true to size, choose your usual size  
Those with a curvy figure may wish to choose the next size up  
Cut for a slim fit  
Lightweight, non-stretchy silk fabric

**DETAILS & CARE**

Slips on  
100% silk  
Cold handwash  
Fair Trade Made in India





MALŪNE

FLORA  
010200009-0221-BW







**FLORA**  
**TIERED COTTON DRESS**  
**\$255 | €220**

010200009-0221-BW

**Airy cotton dress**

This dress has an airy, tiered silhouette that makes it perfect for throwing on over your swimsuit on vacation. It's made from airy cotton that's patterned with blue white drops and has narrow ties at the neck with cords and an additional belt with cords to tie the waist for a fitted look, if preferred. Wear it with sneakers or flip flops.

Size



**DESCRIPTION**

Designed to slip in  
Ruffles sleeves  
Wearable with open neckline or closed by straps with cords  
Extra strap with cords to use it as a belt  
Tiered silhouette

**SIZE & FIT**

Model is 178cm/ 5'10" and wears a size S  
Fits true to size, choose your normal size  
Designed for a loose fit  
Lightweight, non-stretchy cotton fabric

**DETAILS & CARE**

100% cotton  
Machine wash  
Designer color: blue/white  
Made in India











**ELLA „blue-white“  
TIERED COTTON MAXI DRESS**  
\$294 | €254

01020010-0221-BW

**Airy cotton dress**

MALUNE's 'ELLA' dress has an airy, tiered silhouette that makes it perfect for throwing on over your swimsuit on vacation. It's made from airy cotton that's patterned with blue white drops and has narrow ties at the neck with cords and an additional belt with cords to tie the waist for a fitted look, if preferred. Wear it with flip flops and a woven tote.

Size



**DESCRIPTION**

Designed to slip in  
Including an underdress (you can take it out)  
Ruffles sleeves  
Wearable with open neckline or closed by straps with cords  
Extra strap with cords to use it as a belt  
Tiered silhouette  
Skirt length from waist measured at size M is 100cm

**SIZE & FIT**

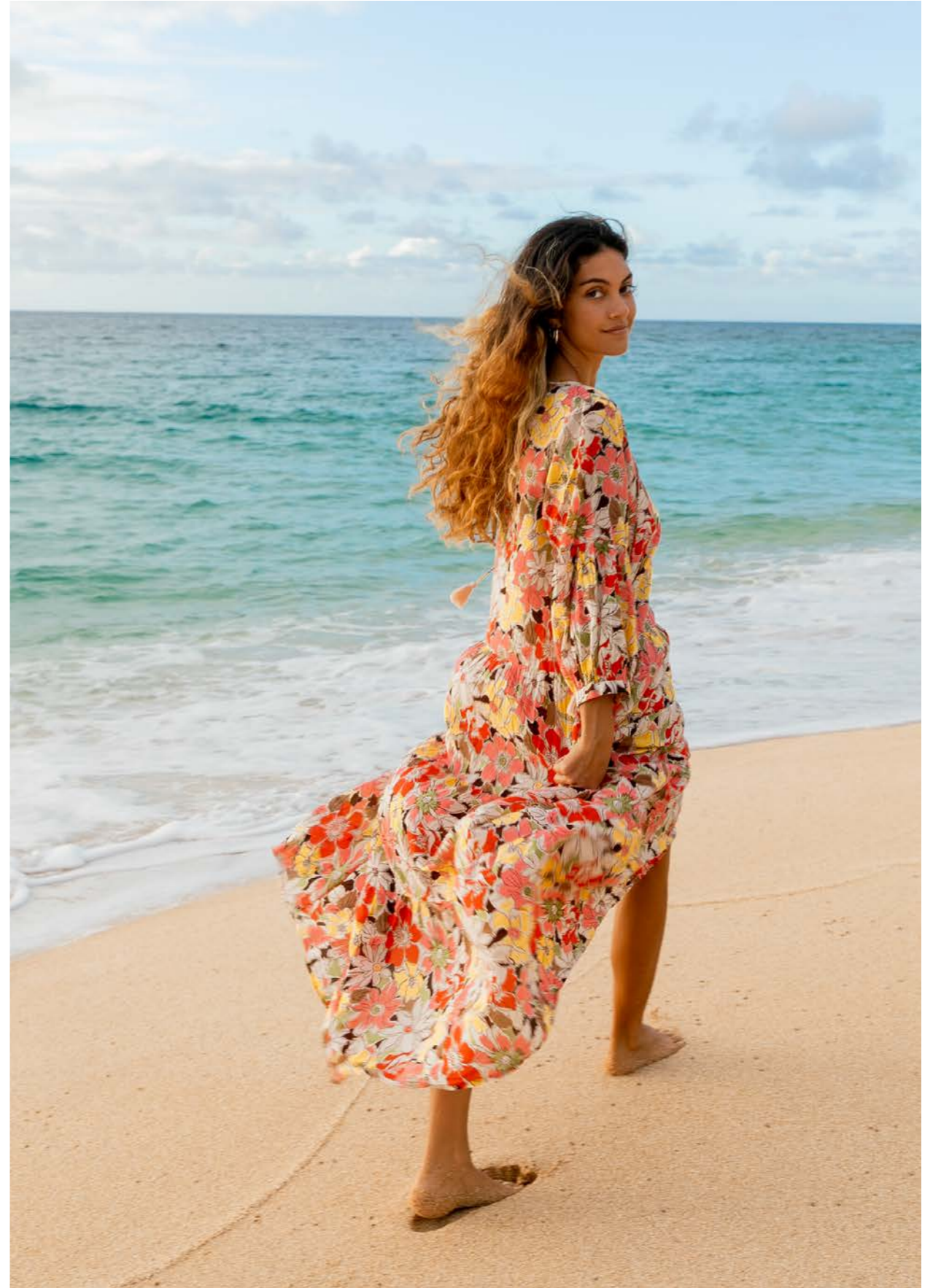
Model is 178cm/ 5'10" and wears a size S  
Fits true to size, choose your normal size  
Designed for a loose fit  
Lightweight, non-stretchy cotton fabric

**DETAILS & CARE**

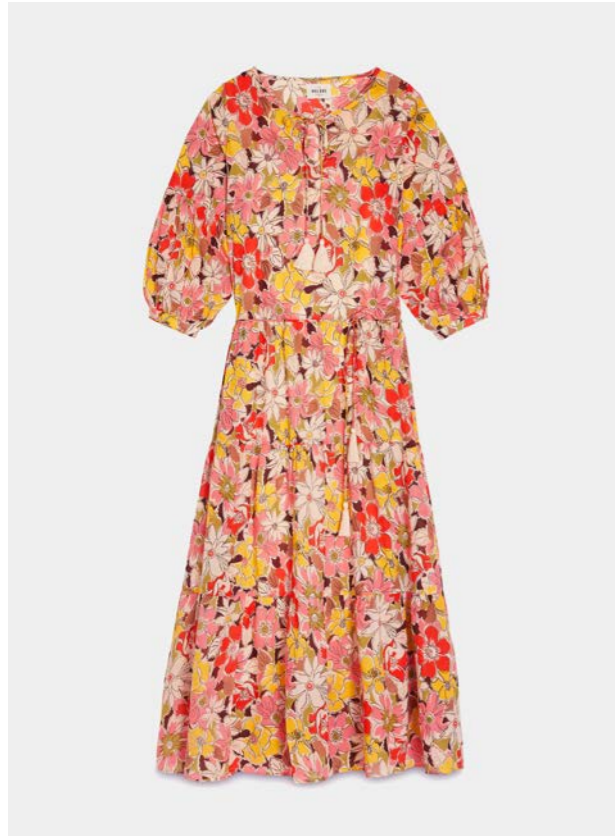
100% cotton  
100% rayon the extra under slip dress  
Machine wash  
Designer color: blue-white  
Made in India











**ELLA „pink“**  
**TIERED COTTON MAXI DRESS**  
**\$294 | €254**

01020010-0221-P

**Airy cotton dress**

MALUNE's 'ELLA' dress has an airy, tiered silhouette that makes it perfect for throwing on over your swimsuit on vacation. It's made from airy cotton that's patterned with blue white drops and has narrow ties at the neck with cords and an additional belt with cords to tie the waist for a fitted look, if preferred. Wear it with flip flops and a woven tote.

Size



**DESCRIPTION**

Designed to slip in  
Including an underdress (you can take out)  
Ruffles sleeves  
Wearable with open neckline or closed by straps with cords  
Extra strap with cords to use it as a belt  
Tiered silhouette  
Skirt length from waist measured at size M is 100cm

**SIZE & FIT**

Model is 178cm/ 5'10" and wears a size S  
Fits true to size, choose your normal size  
Designed for a loose fit  
Lightweight, non-stretchy cotton fabric

**DETAILS & CARE**

100% cotton  
100% rayon the extra under slip dress  
Machine wash  
Designer color: retro pink  
Made in India











**ELLA „petrol“  
TIERED COTTON MAXI DRESS**  
\$294 | €254

01020010-0221-PE

**Airy cotton dress**

MALUNE's 'ELLA' dress has an airy, tiered silhouette that makes it perfect for throwing on over your swimsuit on vacation. It's made from airy cotton that's patterned with blue white drops and has narrow ties at the neck with cords and an additional belt with cords to tie the waist for a fitted look, if preferred. Wear it with flip flops and a woven tote.

Size



**DESCRIPTION**

Designed to slip in  
Including an underdress (you can take out)  
Ruffles sleeves  
Wearable with open neckline or closed by straps with cords  
Extra strap with cords to use it as a belt  
Tiered silhouette  
Skirt length from waist measured at size M is 100cm

**SIZE & FIT**

Model is 178cm/ 5'10" and wears a size S  
Fits true to size, choose your normal size  
Designed for a loose fit  
Lightweight, non-stretchy cotton fabric

**DETAILS & CARE**

100% cotton  
100% rayon the extra under slip dress  
Machine wash  
Designer color: petrol  
Made in India







LUCIA „blue“  
CREPE DRESS  
\$208 | €180

01020011-0221-B

**Airy cotton dress**

A breezy slip on dress. Knee length, loose fit and with ruffles at neckline. Lucia is created as a soft feel beach dress. Wear yours with flats over a bikini on your way to the beach - or with a long cardigan and boots.

Size



**DESCRIPTION**

Designed to slip in  
Ruffles on the neckline  
Knee length

**SIZE & FIT**

Model is 178cm/ 5'10" and wears a size S  
Fits true to size, choose your usual size  
Lightweight, non-stretchy rayon crepe

**DETAILS & CARE**

100% Rayon  
Machine wash  
Made in India



Available in Two Colors  
See next page





LUCIA „red“  
CREPE DRESS  
\$208 | €180

01020011-0221-R

**Airy cotton dress**

A breezy slip on dress. Knee length, loose fit and with ruffles at neckline. Lucia is created as a soft feel beach dress. Wear yours with flats over a bikini on your way to the beach - or with a long cardigan and boots.

Size



**DESCRIPTION**

Designed to slip in  
Ruffles on the neckline  
Knee length

**SIZE & FIT**

Model is 178cm/ 5'10" and wears a size S  
Fits true to size, choose your usual size  
Lightweight, non-stretchy rayon crepe

**DETAILS & CARE**

100% Rayon  
Machine wash  
Made in India



Available in Two Colors  
Navi & Red



# MALŪNE

## ABOUT

MALUNE is a resortwear brand based between Hawaii and Berlin, founded in 2020 by Frida Weyer. Our collection is made for dreamers whose minds wander to far off places that bring intense summer memories of salt, smooth sandy beaches and calm seas. Fairly made from the most natural materials and prints inspired by Mother Nature; our collection of kimonos, caftans, dresses and every day essentials is designed to bring you the feeling of paradise no matter where you are in the world.

#MALUNE\_THELABEL #PARADISEFOUND

[MALUNE.COM](https://www.malune.com)