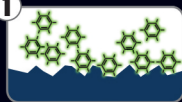


PROFILINE CERAMIC COATING

How does it work?

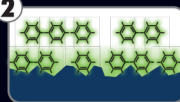
1



Paintwork surface greatly enlarged

After the application of BASECOAT
The carrier solvent evaporates; the modified siliceous particles begin to consolidate.

2



Paintwork surface greatly enlarged

After polishing of BASECOAT
Covalent (chemical) bond between particles and to the paintwork.

3



Paintwork surface greatly enlarged

After one hour of exposure time
A highly resistant, dense and protective network has formed.

4



Paintwork surface greatly enlarged

After the application of GLOSSCOAT
An additional polymer composite provides more colour depth, optimal smoothness and a long-lasting repellent effect.

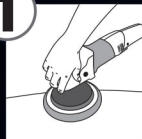
Flexible long-term protection with exceptional resistance to UV radiation and chemicals, but also to aggressive environmental influences such as road salt, tar as well as street and industrial pollution.

- Less maintenance effort thanks to "Easy-to-Clean" effect
- Incredible deep shine with impressing colour intensity
- Extends the life of the paintwork surface and thus actively contributes to preserving the vehicle's value



How should I proceed?

1



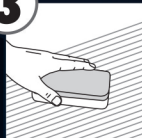
Thoroughly clean the paint and polish it with a machine to a high-gloss finish - without any holograms.

2



The surface needs to be absolutely clean before sealing it. Spray PREPARE, which comes with the set, onto a microfibre cloth ultrafine and thoroughly wipe all surfaces to be treated.

3



Then, thinly apply BASECOAT (1) using the enclosed Application Pad ① (soft side). For sensitive paint surfaces also used the enclosed Microfibre Cloth, by wrapping it around the pad (make sure there are no wrinkles).

Always treat small partial surfaces (approx. ¼ bonnet or ½ m² in crisscross sequence. After a short drying time (30 seconds to 1 minute at most), wipe the treated surfaces

with a clean Microfibre Cloth Ultrafine to a streak-free finish. Treat all surfaces to be sealed this way. Afterwards, allow product to cure for at least 1 hour; make sure the surfaces are not touched and do not get wet during this time.

4



After the prescribed curing time, apply GLOSSCOAT (2) to achieve a superior smoothness and deep shine. For this, spray product onto the enclosed Application Pad ② (soft side) and spread over all surfaces. Here, you can treat areas of a half bonnet in size, which then need to be wiped over with a Microfibre Cloth Ultrafine to remove excess product (drying is not necessary).

PLEASE NOTE:

- Do not use on hot surfaces!
- To obtain surfaces as perfect as possible, it is imperative to carry out the treatment in a well illuminated hall.
- For BASECOAT: within the first hour, missed stains or streaks can be dissolved and removed by applying the product again.
- The sealed vehicle should not be washed within the first three days after treatment.
- Do not use high alkaline content cleaning concentrates (e.g. Insect Remover).
- Do not polish vehicle!