



SECURITY | SITE MANAGEMENT | SAFETY

# CONSTRUCTION SITE SERVICES AND SOLUTIONS





# THE ATF SOLUTIONS

**01** FENCING SOLUTIONS

**02** HEIGHT SAFETY SOLUTIONS

**03** VISION SURVEILLANCE SOLUTIONS

With a footprint of over 60 locations and more than 5,000 regular clients, ATF has built a reputation throughout Australia and New Zealand for delivering an extensive range of smarter safety solutions, through superior product quality, backup and service.



**MARKET LEADER IN  
THE SUPPLY OF QUALITY  
SOLUTIONS FOR  
TEMPORARY FENCING,  
HEIGHT SAFETY AND  
SURVEILLANCE**





01

# TOTAL FENCING SOLUTIONS





01

## TEMPORARY FENCING SOLUTIONS

### TEMPORARY FENCING SOLUTIONS

We are the Australian owned market leader for the supply of quality solutions for temporary fencing hire. We have a large stock holding of fencing equipment for hire from locations throughout Australia.

Fencing is AS 4687 Code compliant

Heavy Duty Temporary Fencing Panel Size – 2.1 metres (H) x 2.65 metres (W) with 1.8-metre high mesh infill

Heavy Duty Block Size – 600mm x 220mm x 150mm weighing approximately 36kg

F/Frames bracing if required

Personnel gates

Shade Cloth supplied and installed

### CROWD CONTROL BARRIERS

#### STURDY, INTERLOCKING AND FREE STANDING

ATF Crowd Control Barriers for hire are used at events of all sizes.

Designed for use with large crowds, ATF Crowd Barriers incorporate flat feet (to minimise the tripping hazard), and they provide a quick and efficient barrier solution, perfect for all situations.

The Crowd Control Barrier system is ideally suited for use for sporting events, concerts, public gatherings, construction sites and any on site designated area you need to divert or keep the public away from.



01

## TEMPORARY FENCING SOLUTIONS

### CONSTRUCTION HOARDING

#### HOARDING PANELS

ATF Construction Hoarding Panels for hire have been designed to provide a quick and easy barrier to falling objects, dust and debris and have been engineered to meet Australian Standards.

From 12mm timber plywood to our latest high density medium polyethylene plastic, the construction hoarding panels provide a private and secure barrier to ensure security whilst construction is under way.

Gates for access can be easily provided anywhere in the installation with the special gate clamps provided. For added security, the use of chains, padlocks and gate latches can also be provided.

The system is ideally suited for use on:

Construction sites

Civil sites

Concerts/Events

Any site and public restriction area





02

# HEIGHT SAFETY SOLUTIONS





# 3-WAY INDUSTRIAL SYSTEM

THE 3-WAY BENEFITS OF USING THE  
DUAL ROOF AND WALL CLADDING  
DESIGN BY ATF.



TRIM DECK ROOF



CLIP LOCK ROOF

Designed & Dynamic Load Tested to AS/NZS.4994.1-2009 to be Mounted & Fitted to Hi-Tensile Galvanised C&Z Steel Purlins and Girts. The 3-way system allows for the use of a Mounting Bracket to be clamped as well as be screwed down to the purlins and fascia beam, for the installation of the Roofing & Wall Cladding at the same time; a standout benefit for all new construction of commercial and industrial structures.

0-15° DEGREE  
PITCHED ROOF

< 100MM  
DEFLECTION  
WHEN CRANKED  
@ 2.2MTR WITH A  
4.4MTRS SPAN

SELF-  
SUPPORTING  
SYSTEM

LIGHTWEIGHT  
CRANKED  
SYSTEM



## SAVE TIME

Construction Leadtimes will DECREASE (1. Day saving for every 50. Linear Mtrs installed, when compared to traditional methods of installation)



## BOOST PRODUCTIVITY

Complementary Trades can be COMPLETED in unison, INCREASING the construction activity to finish the project EARLY – DECREASING delays because the Roof & Wall Fascia Cladding is mounted at the same time.



## REDUCE COSTS

Delays due to trade stand-downs are REDUCED – waiting times for trades to finish are REDUCED – the backlog of services, the unnecessary equipment hire and additional labour COSTS are REDUCED by using the ATF 3-WAY INDUSTRIAL SYSTEM.



## REDUCE HARM

The unique mounting design allows the handrail & mounting bracket to be always engaged to prevent “falls from heights” risk – this ensures the scope of works being done without any disruption to workplace safety.



# 02

## GUARDRAIL PERIMETER SYSTEM & GUARDRAIL DECK SET SYSTEM

### PERIMETER SYSTEM

The Guardrail Perimeter System fits all commonly used steel structures in the commercial and industrial construction sectors. The clamps are designed to attach to purlins, girts and fascia steel while not impeding the laying of roofing sheets.

Designed and tested to assure compliance with AS4994

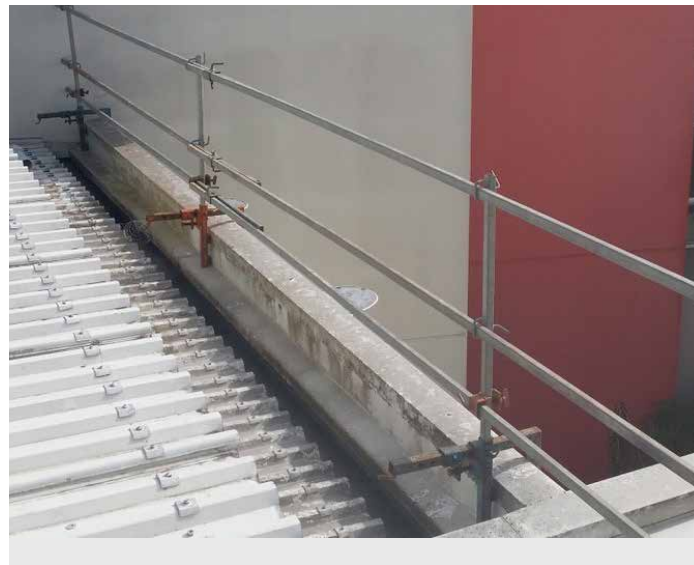
A cheaper alternative to ground up scaffolding

Suitable for a wide range of buildings, roofs and trades



### PARAPET SYSTEM

The Guardrail Parapet System provides valuable fall protection in those places where traditional systems fail to attach. The ease of application allows for installations free from damage to the host materials with the confidence of a strong handrail. The Clamp-On System is used on the top of concrete parapet walls or the edge of cantilever slab floors and is adjustable from 100mm to 560mm thick walls or slabs.



### DECK SET SYSTEM

As the size of modern commercial/industrial roofs increases, so does the need for safety systems to protect those who work on those roofs. ATF Height Safety stocks large quantities of this Guardrail System enabling us to cater for vast span distances. This allows the construction to continue free from the interruptions of multiple installation and removals to keep up with construction. The Deck Set System may be used for edge protection, maintenance or as a barricade to designate a loading area, or a “NO GO” zone.



# 02

## GUARDRAIL CONCRETE & BRICK BOLT ON/DOWN SYSTEMS

### CONCRETE BOLT ON/DOWN SYSTEM

The Concrete Bolt On/Down System is used on tilt up panels whereby the roof and gutter extends over the panel. This system allows the laying of roof sheets flashing and gutters to be completed while the fall protection stays in place.





# 02

## HEIGHT SAFETY SOLUTIONS & RESIDENTIAL SOLUTIONS

### DOMESTIC VOID PROTECTION SOLUTIONS

Domestic stair void protection is installed at the earliest point in the construction process, directly after the joists and other load bearing members have been installed and before the upper flooring is laid. This provides a safe working environment for the framing carpenter and his team. This system allows for the installation of gyprock and plasterboard without leaving large patch areas.

### EDGE SAFE

Provides full encapsulation for first floor edge protection

Peace of mind for any carpenter or trade, obstruction free!

Suitable for timber and metal frames



# 02

## HEIGHT SAFETY SOLUTIONS & RESIDENTIAL SOLUTIONS

### MOBILE TOWER

ATF is the market leader when it comes to working platforms for the Industrial, Commercial and Residential building industries.

Easy to maneuverer

Light duty scaffold

Order to height



### HANDOVER

ATF has developed its own job safety and compliance iPad based App, which allows installers to complete a SWMS in real time on a site and complete a handover certificate when the job is completed, including photographs of the completed project.

Some key benefits are:

- Drives WHS compliance
- Process verification
- Photographic evidence of installation
- Desktop review
- Real time job indicators
- Knowledge management





03

# INTELLIGENT VIDEO SURVEILLANCE SOLUTIONS





# 03

## V8000 SOLAR OUTDOOR



SMARTPHONE OPERATION



STOP THEFT & VANDALISM



SOLAR OR LOW VOLTAGE



SITE MANAGEMENT



### FEATURES

Ideal for large areas with its dual lenses

Supports 2 infrared night time vision lenses

13° to 180° lens options

Solar powered during day, battery powered at night

Time-lapse recording

Manage notifications and receive real-time alerts via free smartphone app

2GB data allowance/month

Vandalism & tamper resistant

Optional;  
Third party monitoring  
Number plate recognition  
Motion activated flood lights

**Sensor compatible**

Australian Patent No. 2017 100111 applies

Phone 13 17 16 | [www.atfvision.com.au](http://www.atfvision.com.au)

# 03

## V4000 SOLAR OUTDOOR



SMARTPHONE OPERATION



STOP THEFT & VANDALISM



SOLAR OR LOW VOLTAGE



SITE MANAGEMENT



### FEATURES

Ideal for small to medium areas with its dual lenses

Supports 2 infrared night time vision lenses

13° to 180° lens options

Solar powered during day, battery powered at night

Time-lapse recording

Manage notifications and receive real-time alerts via the free smartphone app

2GB data allowance/month

Vandalism & tamper resistant

Optional;  
Third party monitoring  
Number plate recognition

**Sensor compatible**

Australian Patent No. 2017 100205 applies

Phone 13 17 16 | [www.atfvision.com.au](http://www.atfvision.com.au)



# 03

## VISION MATE CAMERA



SMARTPHONE OPERATION



STOP THEFT & VANDALISM



SOLAR OR LOW VOLTAGE



SITE MANAGEMENT

### FEATURES

Ideal for small areas

Solar powered during daytime with battery powered at night time OR low voltage option with battery back up

Single lens (6MP) either colour or black and white with infrared vision

Lens range from 45-103 degrees

Time-lapse recording available

Easy to install and setup

Flexible installation options – fix to existing infrastructure or suitable free-standing post

2GB data allowance per month

Optional:

3rd party monitoring

Daily photo

**Sensor compatible**





# 03

## V3000 INDOOR / OUTDOOR



SMARTPHONE OPERATION



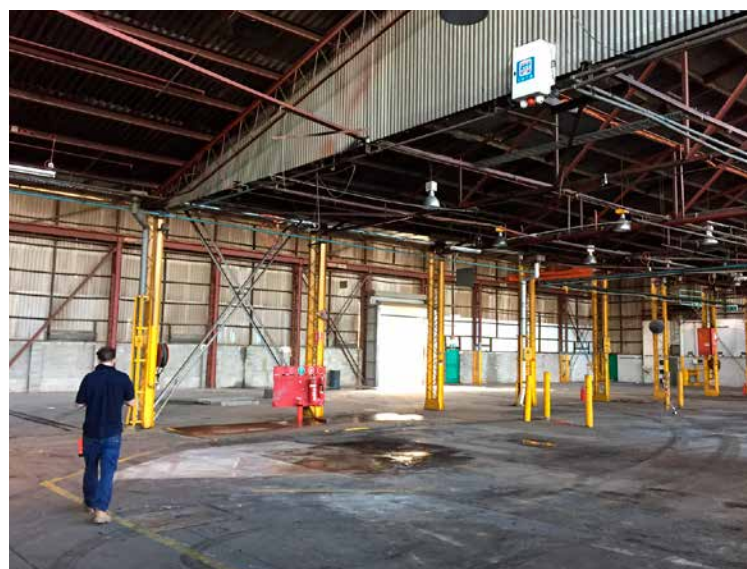
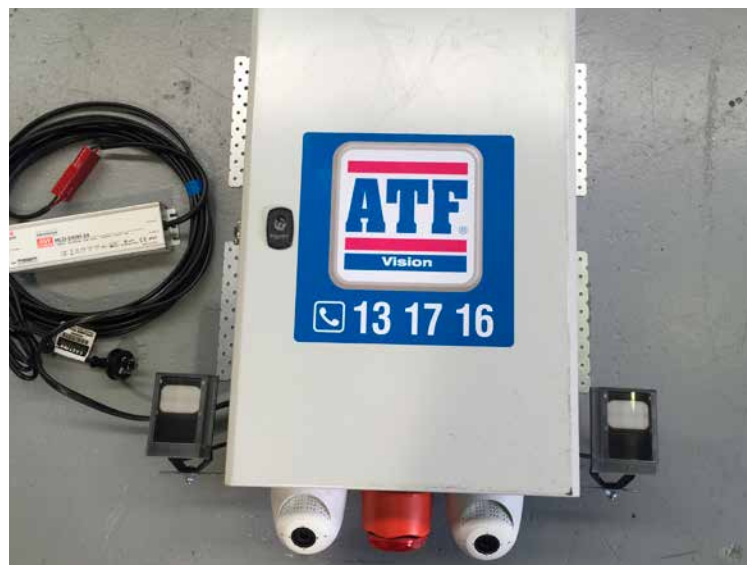
STOP THEFT & VANDALISM



LOW VOLTAGE



SITE MANAGEMENT



### FEATURES

- 24 volt mains power
- Dual video, 13° to 180° lens options
- Powerful infrared night time vision
- Time-lapse recording
- Manage alarm schedules, monitor activity and receive real-time alerts via free smartphone app
- Strobe light and siren activation
- Wall mountable
- 2GB data allowance/month
- Approx. 5 hour battery backup incase of power failure
- Up to 3 mths video event storage
- Optional;  
Third party monitoring option  
Number plate recognition  
**Sensor compatible**

Australian Patent No. 2015 101626 applies

Phone 13 17 16 | [www.atfvision.com.au](http://www.atfvision.com.au)

# 03

## V2000 INDOOR



SMARTPHONE OPERATION



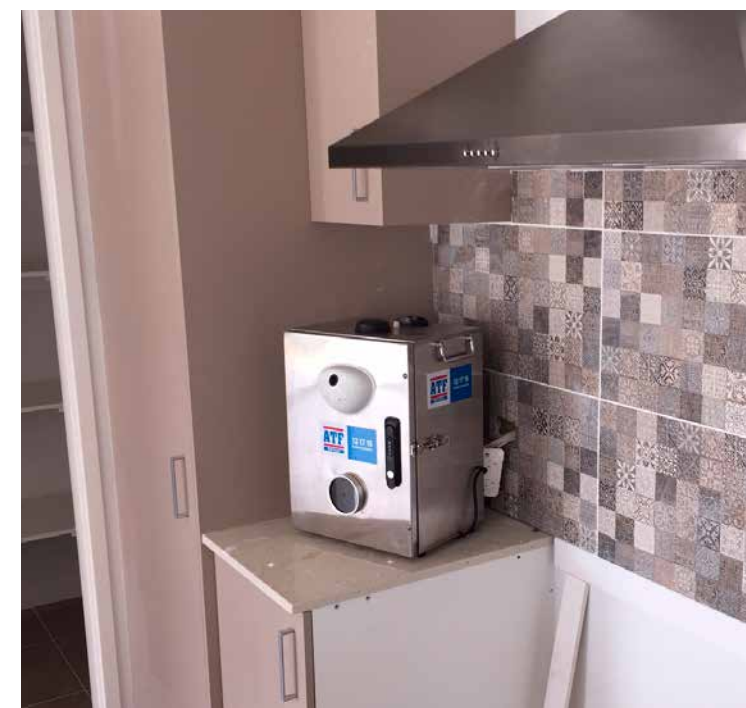
STOP THEFT & VANDALISM



LOW VOLTAGE



SITE MANAGEMENT



### FEATURES

- Ideal for surveillance in any indoor location
- Powerful infrared night time vision
- 180° B&W lens providing complete coverage
- 24 volt mains power
- Approx. 8 hour battery backup in case of power failure
- Manage notifications and receive real-time alerts via the free smartphone app
- 2GB data allowance/month
- Up to 3 mths video event storage
- Optional;  
Third party monitoring option  
**Sensor compatible**

Australian Patent No. 2015 101626 applies

Phone 13 17 16 | [www.atfvision.com.au](http://www.atfvision.com.au)



03

## CAMERA APP



REMOTE PROJECT MANAGEMENT

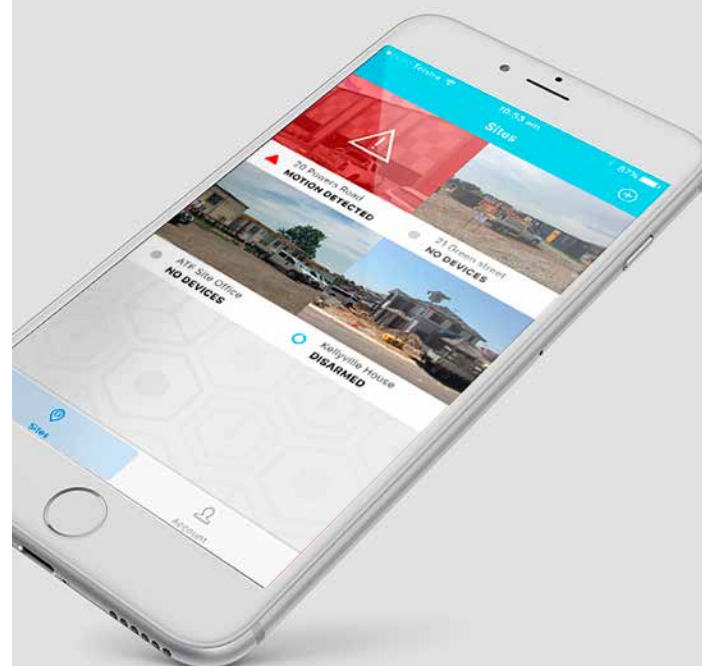
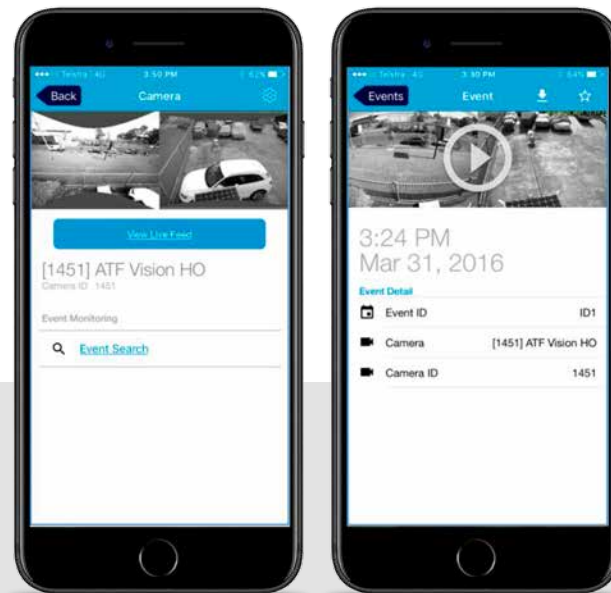
MONITOR SAFETY AND  
PRODUCTIVITYMANAGE AND MONITOR  
TRADESMEN AND DELIVERIES

SITE DISPUTE RESOLUTION

## FEATURES

- 24 hour a day access
- Manage alarms from remote locations
- Quick event search function
- Multiple sites, multiple users
- Customised access
- Real-time event notifications
- View live footage
- Daily photo via email (optional)

Control your surveillance from the palm of your hand with our easy to use, customisable App for Apple and Android devices.

LIVE  
VIDEO  
VIEWING!REAL  
TIME  
FEEDS!MULTI  
SITES &  
USERS!

03

## CAMERA &amp; LENSES



SMARTPHONE OPERATION



STOP THEFT &amp; VANDALISM



SOLAR OR LOW VOLTAGE

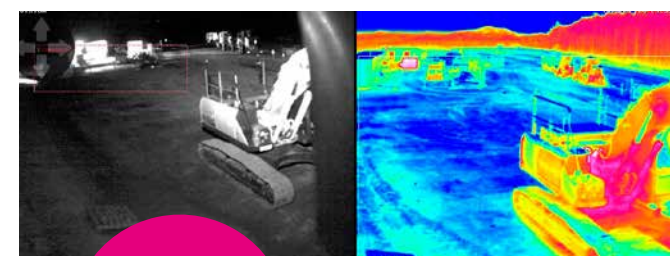
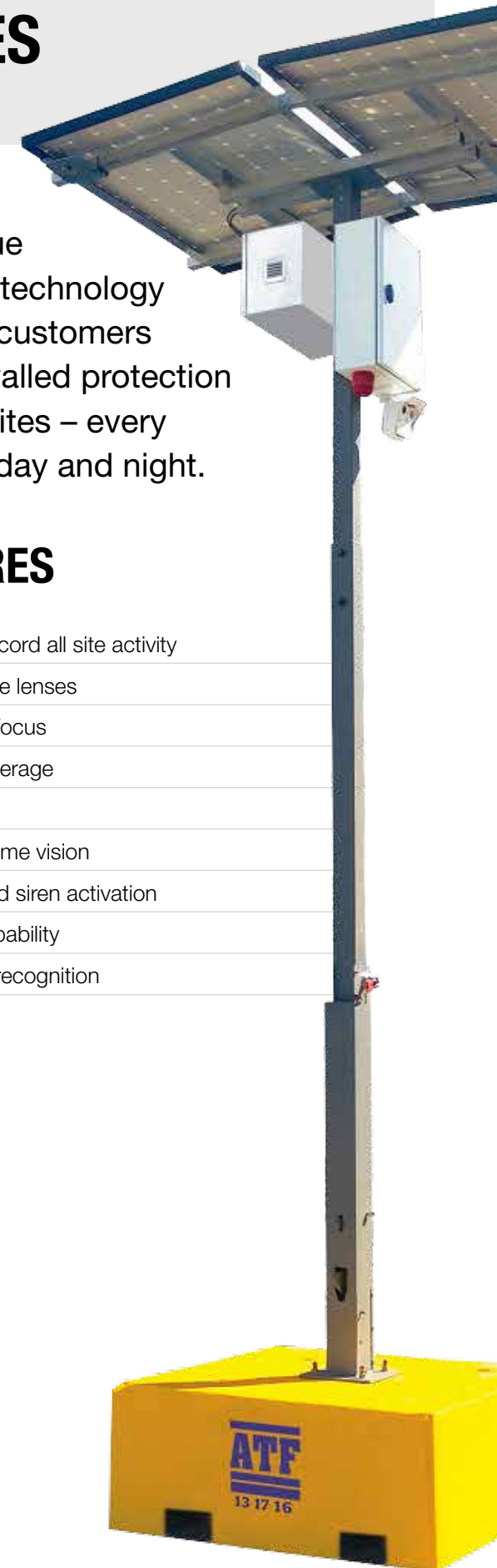


SITE MANAGEMENT

Our unique patented technology provides customers with unrivalled protection for their sites – every situation day and night.

## FEATURES

- Monitor and record all site activity
- Interchangeable lenses
- Single or dual focus
- 13° to 180° coverage
- Solar powered
- Infrared night time vision
- Strobe light and siren activation
- Time-lapse capability
- Number plate recognition

INFRARED  
NIGHT  
VISION!



# 03

## SECURE AREA SENSOR



### FEATURES

- Indoor/outdoor
- Easy setup and install
- Battery powered (12 months)
- Tamper resistant
- Real-time alarm notifications via your smartphone app
- Warning light and buzzer
- Motion, audio, vibration and anti-mask sensors

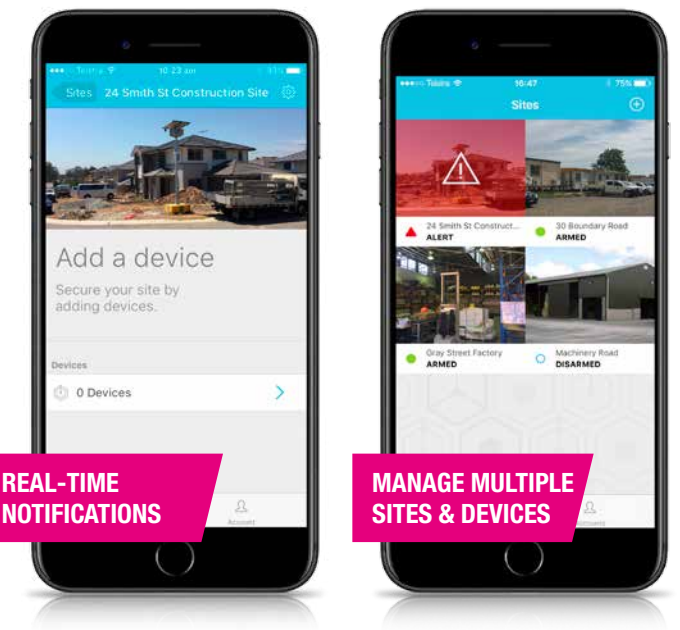
### SUITABLE FOR

- New home builds & renovations
- Vacant properties
- Caravans & boats
- Access ways, paths & driveways
- Swimming pool areas
- Site offices
- Site machinery cabs
- Shipping containers
- Sheds & storage areas

Phone 13 17 16 | [www.atfvision.com.au](http://www.atfvision.com.au)

# 03

## MULTI SENSOR APP



### FEATURES

- Easy to use
- Manage your security from the palm of your hand
- Access your sensor network 24/7
- Real-time activity/event notifications
- Multi-user network effectively creates an 'electronic neighbourhood watch'
- Personalised settings
- Create multiple sites with images
- Add multiple devices via Bluetooth
- View individual site and device information
- View event history and triggered events by sensor type
- Manage and test sensors

Australian Patent No. 2017 100111 applies



# TIME LAPSE RECORDING



SMARTPHONE OPERATION



SOLAR OR LOW VOLTAGE



SITE MANAGEMENT

## FEATURES

Single lens or dual lens panorama

High definition

Turnkey compilation

Weekly, monthly, quarterly or customised time frames

Cloud based image storage

Access images at any stage of the project



# 03

## SMART SOLAR GATES



ZERO CARBON FOOTPRINT



STOP THEFT & VANDALISM



SOLAR POWER



SITE MANAGEMENT

### FEATURES

Free standing, no ground penetration,  
easy levelling system

4.5m or 6m clear span opening

Wireless entrance solution

Open gate via smartphone app

Includes V4000 security camera/s

Automatically opens gate for exiting vehicles

Australian Patent No. 2017 100205 applies



# 03

## SMART SOLAR LIGHTS



ZERO CARBON FOOTPRINT



STOP THEFT & VANDALISM



SOLAR POWER



SITE MANAGEMENT

### FEATURES

Quick Installation

Small footprint (pallet size 1.1m<sup>2</sup>)

Automatic day/night or manual off/on switch

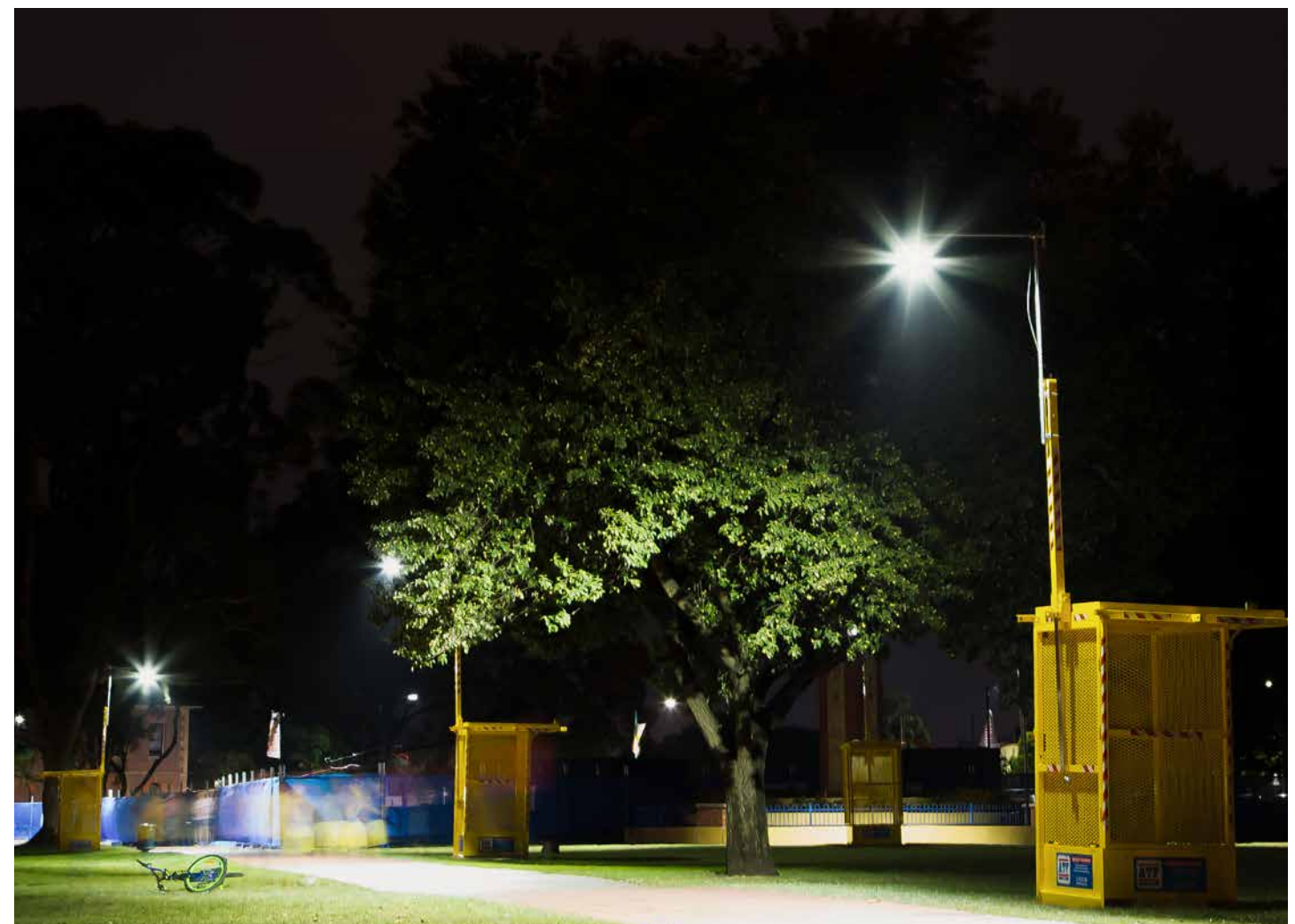
Adjustable dimmer switch from 20W-95W

Solar powered and silent

No fuel required

Rugged design

Vandalism & tamper resistant





SECURITY | SITE MANAGEMENT | SAFETY

## ATF SERVICES NATIONAL LOCATIONS

### WA

Kalgoorlie  
Karratha  
Perth

### NT

Darwin

### QLD

Brisbane  
Cairns  
Gold Coast  
Mackay  
Sunshine Coast  
Toowoomba  
Townsville

### SA

Adelaide

### NSW

Coffs Harbour  
Newcastle  
Port Macquarie  
Sydney  
Tamworth  
Wollongong

### ACT

Canberra

### VIC

Melbourne  
Yarrawonga

**PHONE NATIONWIDE 13 17 16**  
**ATFSERVICES.COM.AU**



**ATFVISIONAU**

Master Security Licence #1000101268  
Australian Security Industry Association  
Limited membership 55419.



AUSTRALIAN SECURITY INDUSTRY  
ASSOCIATION LIMITED