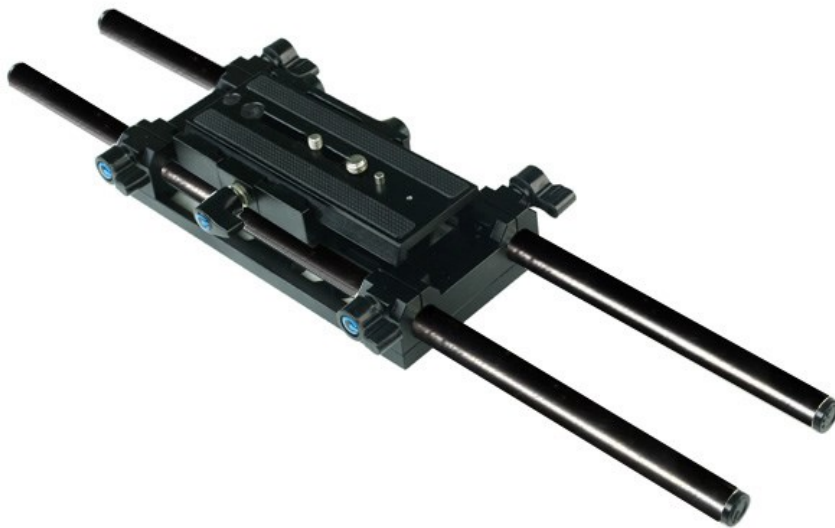




Proaim 15mm Pro Rail Support

(RS-1-00)

INSTRUCTION MANUAL



All rights reserved

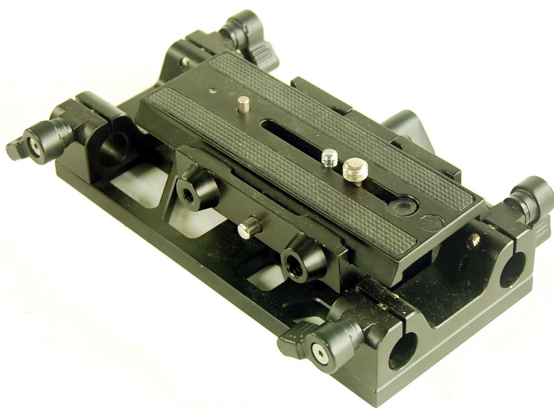
No part of this document may be reproduced, stored in a retrieval system, or transmitted by any form or by any means, electronic, mechanical, photocopying, recording, or otherwise, except as may be expressly permitted by the applicable copyright statutes or in writing by the Publisher.

INTRODUCTION

Proaim 15mm Pro Rail Support is specifically designed to work for Follow Focus and long lenses. If follow focus is used to simplify and enhance the focusing technique, the rod support system along with quick release and base plate is used to lessen the burden of camera. Rail System help take the weight off the front of the camera and takes the strain off the lens mount. Also support follow-focus systems.

WHAT'S IN THE BOX

Please inspect the contents of your shipped package to ensure you have received all that is pictured and listed below.



Quick Release with Base Plate



2x 300mm Female Threaded Rods



2x 150mm Male Threaded Rods



Allen Bolts



Shim Set



L-Key

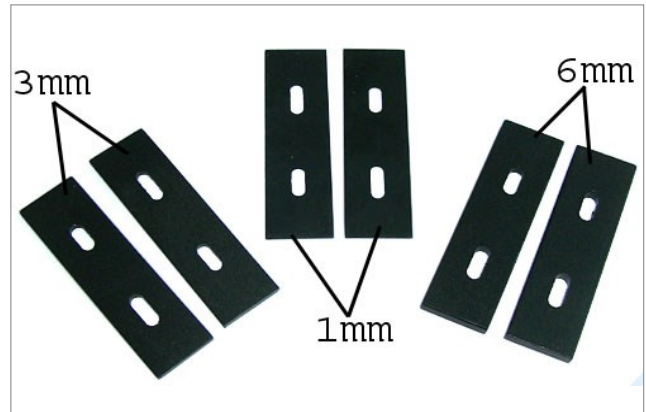
ASSEMBLING YOUR PROAIM 15MM PRO RAIL SUPPORT

- Camera Mounting:** The quick release makes easier to mount the camera on the rail system. Simply screw-in the camera with the quick release plate and insert it into the quick release base adapter of the rail system.



Shims Set – Height Adjustment: The height of the camera can be adjusted by adding the shims.

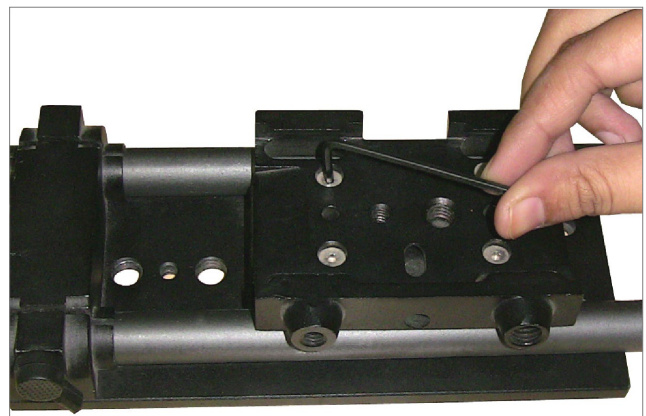
This kit includes 6 shims (in 1mm, 3mm & 6mm two of each).



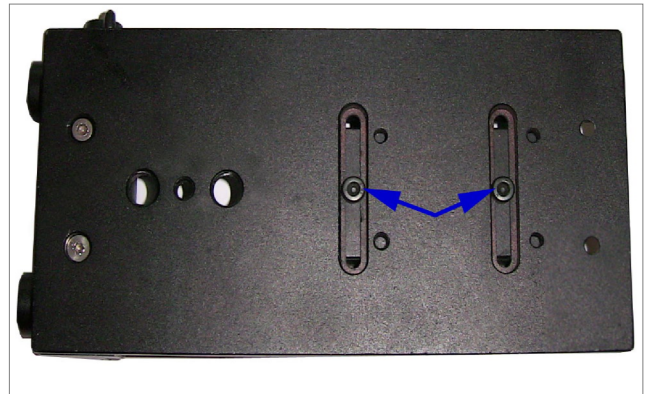
SHIMS APPLICATION INSTRUCTIONS:

If you need to add the shim on it, go through the following steps:

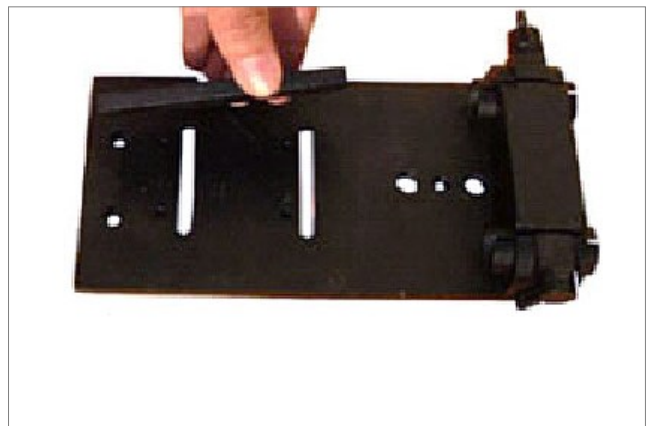
- First remove the quick release adapter with L-key.



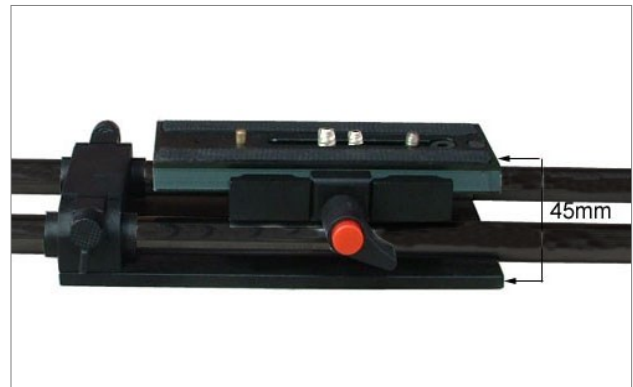
- Then remove the center-adapter by removing the bottom Allen-bolts with L-key provided.



- And then add shims as per need and re-assemble it with longer 4x30mm or 4x25mm screws.



- The left image shows maximum height 60mm with shim set and the right image shows minimum height 45mm without shim set.



THE PROAIM 15MM PRO RAIL SUPPORT IS READY TO USE



Exclusive of Tripod Stand, Matte Box, Mic & Camera setup

WARRANTY

We offer a one year warranty for our products from the date of purchase.

We will repair or replace your product, free of charge, in the event of a defect in materials or craftsmanship obtained during normal use or handling based on the user manual. Please note that we will not cover any shipping costs for returning the product to us. If any VAT or import duties are applied to the return, we will also charge these costs to the customer.

The warranty does not include, by the way of example, damage caused by products that we do not supply or from mishandling in transit, accident, misuse, neglect, lack of care of the product, or service by anyone other than our company.

We are not liable for incidental or consequential damages resulting from the use of the unit or occurring due to any breach of this warranty.

Replacement parts of the product will be provided at nominal cost (covering the cost price of the

replacement parts only) to the customers after the Warranty Period has expired. We will cover the complete cost of sending replacement parts within the warranty period. After that, Nominal cost of the product & Actual shipping cost will be charged.

Do not send the unit to us without first getting a response and getting the approval to send back the item.

In case of any kind of dissatisfaction, we urge you to **Contact us** immediately and we shall do our Best to help you out. For any other assistance you can reach us via email.

For any other assistance you can reach us via email.