



ONE SMART BOX

Underwater Cities® Organizer

UWCOR01

Compatible with Underwater Cities® base game
with New Discoveries Expansion and all Promo Cards
Assembly Guide



<https://smonex.com>

NOT A CHILDREN TOY
AGE 14+

Created for:

- Underwater Cities: Base Game
- Underwater Cities: New Discoveries
- Underwater Cities: Promo Cards

Underwater Cities® is a registered trademark of Delicious Games. Any mention of Underwater Cities® is for reference purposes only. ALL RIGHTS RESERVED by their respective trademark holders. No challenge to any intellectual property rights is intended or implied by representations of compatibility and no endorsements of any of our products by any other company is implied or represented.



ONE SMART BOX Underwater Cities® Organizer

UWCOR01

Compatible with Underwater Cities®base game
with New Discoveries Expansion and all Promo Cards
Assembly Guide

Tips and tricks

- To assemble each tray you need a wood glue for extra strength. (We recommend Titebond 2 Wood Glue or Beacon 527).
- Please make sure you assembled each tray correctly before gluing it together.
- Use stationery knife to cut the bits that connect details to the frame.
- Remove the details from the frame with a rotational motion along the axis formed by the bits you just cut.
- Use stationery knife and sandpaper to remove all the remaining connection bits.
- Please note that the engraving must be on the outside of the boxes.
- You may fix the box with rubber bands after gluing it. This will save you time and simplify the assembly.
- Make sure to remove the protective covering from BOTH sides of the acrylic pieces. Use a hairdryer for easier removal of it if necessary. Just heat the acrylic surface a little to remove the covering much easier!
- Leave your finished insert overnight to dry completely.

Assembly Supplies



Wood-glue



Stationery knife



Hammer



Cotton swab



Rubber bands



Hairdryer

If something is damaged or broken, please do not return the whole set. Contact us directly on email info@smonex.com or our website smonex.com. Any questions or issues with the Smonex products, we'll do our best to help you. We want our customers to be completely satisfied.

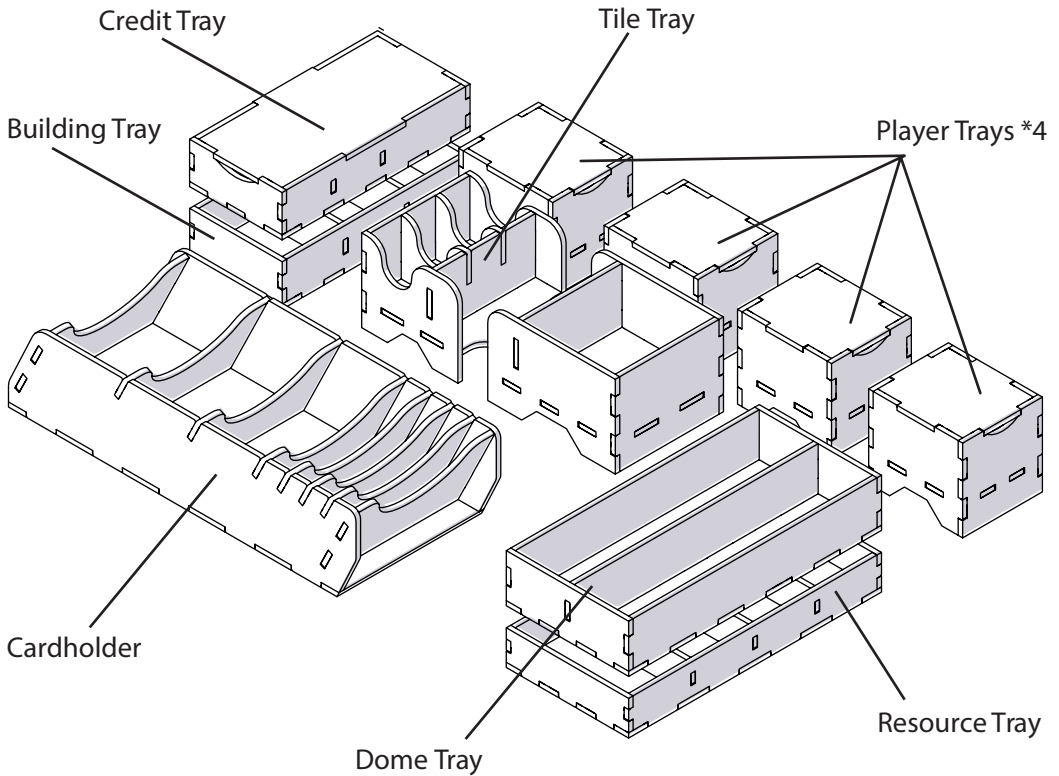
IMPORTANT: Assemble each tray one by one. Please DO NOT take out all the parts from the sheets and mix them. Even though some parts look similar, they are not interchangeable.



ONE SMART BOX Underwater Cities® Organizer

UWCOR01

Compatible with Underwater Cities® base game
with New Discoveries Expansion and all Promo Cards
Assembly Guide





ONE SMART BOX

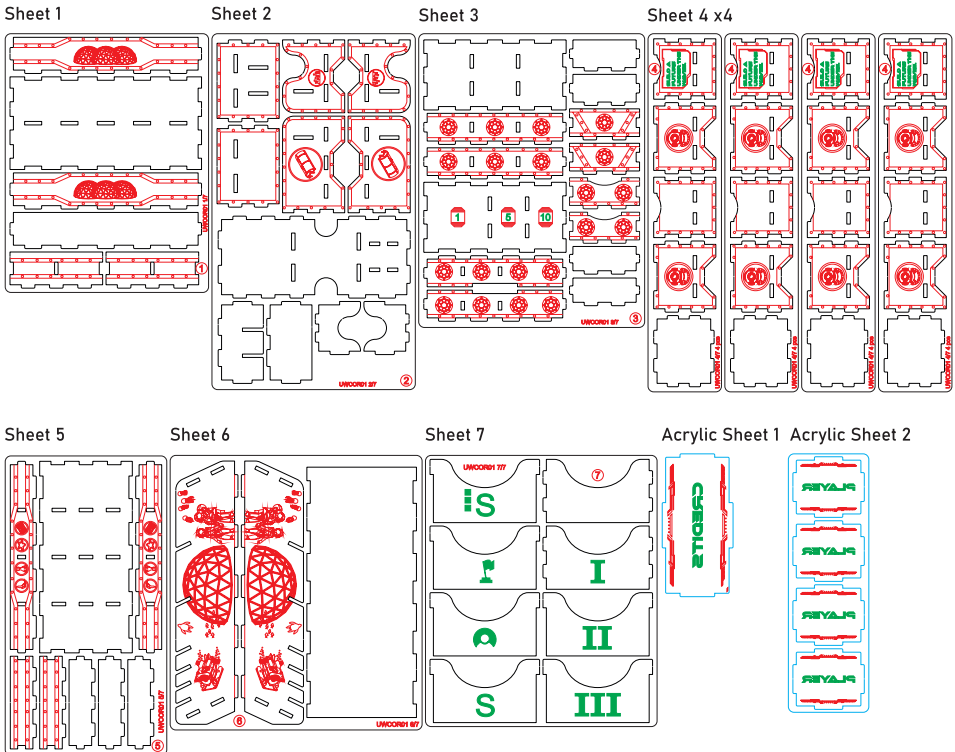
Underwater Cities® Organizer

UWCOR01





Compatible with Underwater Cities® base game
with New Discoveries Expansion and all Promo Cards

Brief assembly instructions:

1. Unpack and arrange the sheets in order.
2. Compare details on the sheets with details in the pictures of the guide.
3. Study the pictures of unassembled product.
4. Start your assembly, taking the necessary parts out of the sheets in a certain order.



Legend:

-  Details to be extruded
-  Details not used in this assembly
-  Details to be glued
-  Details to be connected without glue

Components:

- 10 sheets extrusion molds
- 1 acrylic sheet extrusion mold
- 1 acrylic cover
- 1 sandpaper for stripping parts
- Assembly guide

This is a non-licensed product. ALL RIGHTS RESERVED by their respective trademark holders. No challenge to any intellectual property rights is intended or implied by representations of compatibility and no endorsements of any of our products by any other company is implied or represented.



ONE SMART BOX

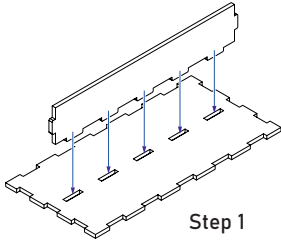
Underwater Cities® Organizer

UWCOR01

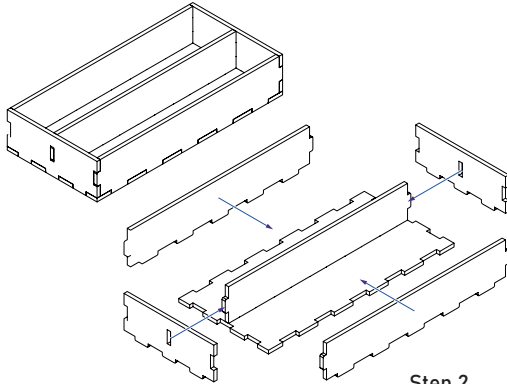
Compatible with Underwater Cities® base game
with New Discoveries Expansion and all Promo Cards
Assembly Guide

Dome Tray

Intended for domes.

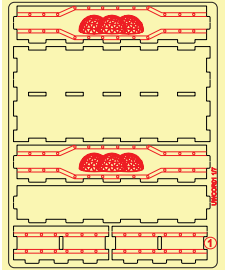


Step 1



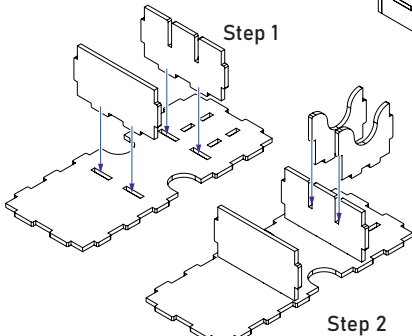
Step 2

Sheet 1



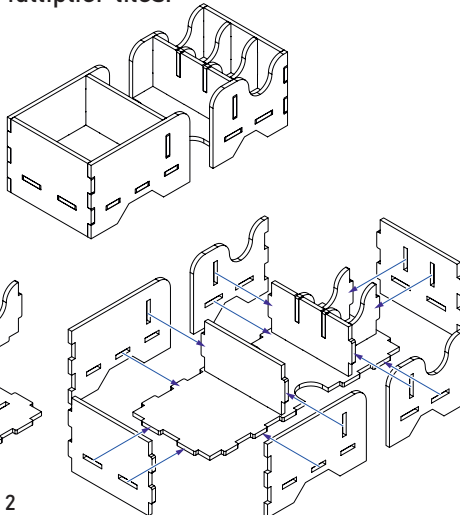
Tile Tray

Intended for Metropolis,
Double-sided Tunnel, Action-Cloning,
and Multiplier tiles.

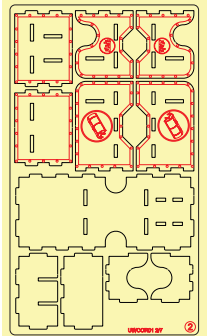


Step 1

Step 2



Sheet 2



Step 3



ONE SMART BOX

Underwater Cities® Organizer

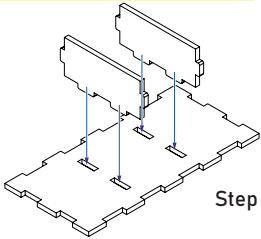
UWCOR01

Compatible with Underwater Cities® base game
with New Discoveries Expansion and all Promo Cards

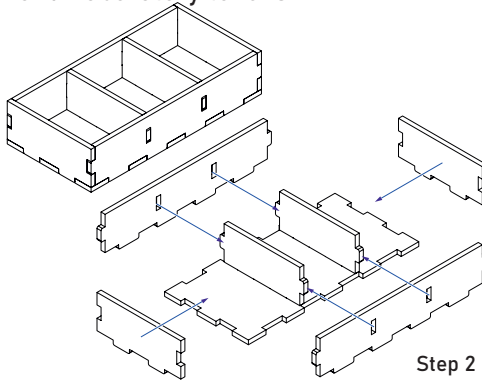
Building Tray



Intended for Farm, Desalination Plant
and Laboratory tokens.

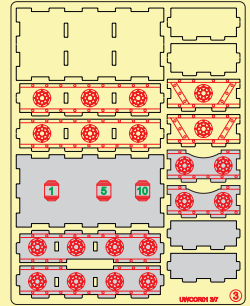


Step 1



Step 2

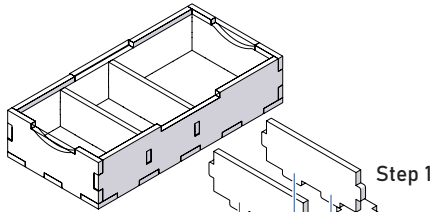
Sheet 3



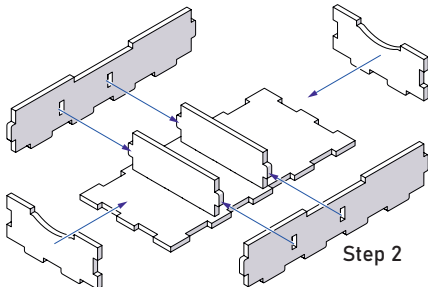
Credit Tray



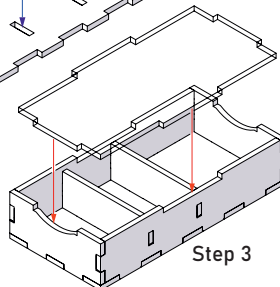
Intended for Credit tokens.



Step 1

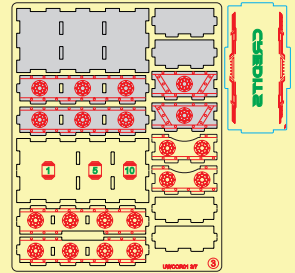


Step 2



Step 3

Sheet 3, Acrylic Sheet 1



Until the glue has completely dried, make sure the lid fits the tray and can be easily removed. Put it back in its place on the tray. Only then carefully remove the protective covering.



ONE SMART BOX Underwater Cities® Organizer

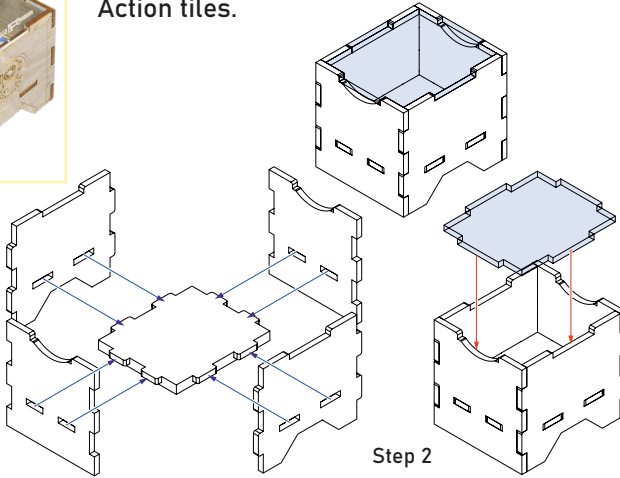
UWCOR01

Compatible with Underwater Cities® base game
with New Discoveries Expansion and all Promo Cards
Assembly Guide

Player Trays *4



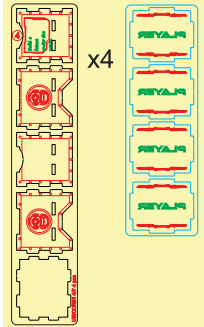
Intended for Player markers and
Action tiles.



Step 1

Step 2

Sheets 4*4,
Acrylic Sheet 2

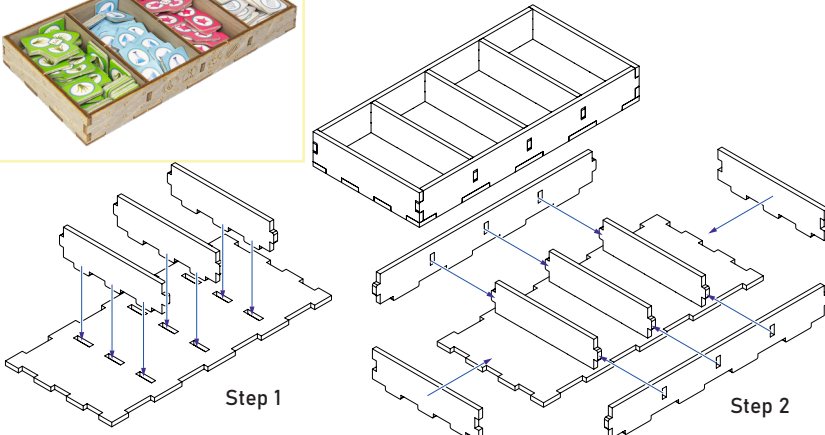


Until the glue has completely
dried, make sure the lid fits the
tray and can be easily removed.
Put it back in its place on the tray.
Only then carefully remove the
protective covering.

Resource Tray



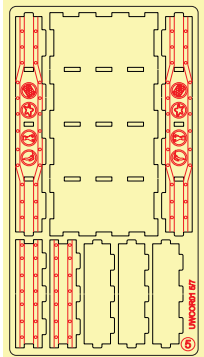
Intended for Biomatter, Kelp,
Steelplast and Science tokens.



Step 1

Step 2

Sheet 5





ONE SMART BOX Underwater Cities® Organizer

UWCOR01

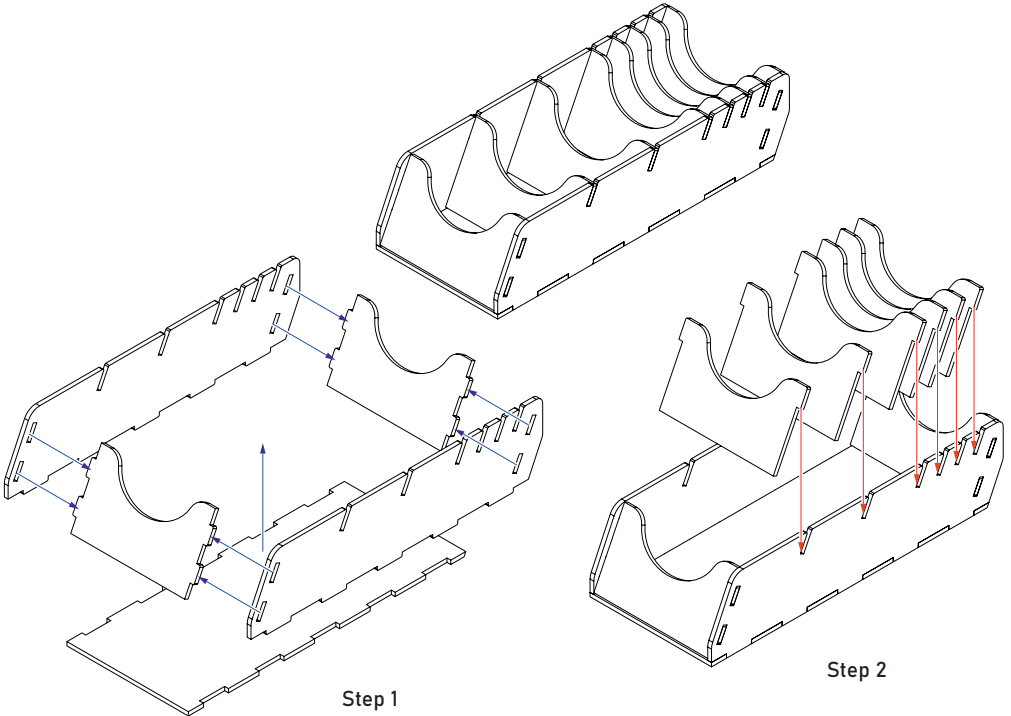
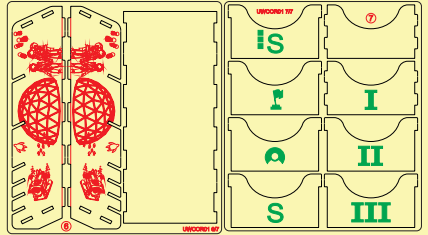
Compatible with Underwater Cities® base game
with New Discoveries Expansion and all Promo Cards
Assembly Guide

Cardholder



Intended for cards.

Sheets 6, 7





ONE SMART BOX

Some other SMONEX products:
Troyes[®] Organizer TRSOR01



Viticulture[®] Organizer VEOR01





ONE SMART BOX

Welcome to <https://smonex.com>.

If something is damaged or broken, please do not return the whole set. Contact us directly on email info@smonex.com or our website smonex.com.

Any questions or issues with the Smonex products, we'll do our best to help you. Your satisfaction of it is our top priority.

Thanks for choosing Smonex product. We would be grateful for your feedback, which inspires us and helps to develop further. We'll gladly help you on any matter if you contact us on info@smonex.com.

Share your photos with **#smonex** and follow us for all the updates:



<https://www.facebook.com/Smonexcom>

https://www.instagram.com/smonex_com/

https://twitter.com/Smonex_com

https://www.pinterest.com/smonex/_shop/

<https://www.youtube.com/c/SmonexSmartOneBox>



Scan QR-code to visit or follow Smonex.