



ONE SMART BOX Troyes® Organizer

TRS0R01

Compatible with Troyes® board game with All Expansions
Assembly Guide



<https://smonex.com>

Created for:

- Troyes
- Troyes: Bonus Cards
- Troyes: The Ladies of Troyes

NOT A CHILDREN TOY
AGE 14+

Troyes® is a registered trademark of Pearl Games. Any mention of Troyes® is for reference purposes only. ALL RIGHTS RESERVED by their respective trademark holders. No challenge to any intellectual property rights is intended or implied by representations of compatibility and no endorsements of any of our products by any other company is implied or represented.



ONE SMART BOX Troyes® Organizer

TRSOR01
Compatible with Troyes® board game with All Expansions
Assembly Guide

Tips and tricks

- To assemble each tray you need a wood glue for extra strength. (We recommend Titebond 2 Wood Glue or Beacon 527).
- Please make sure you assembled each tray correctly before gluing it together.
- Use stationery knife to cut the bits that connect details to the frame.
- Remove the details from the frame with a rotational motion along the axis formed by the bits you just cut.
- Use stationery knife and sandpaper to remove all the remaining connection bits.
- Please note that the engraving must be on the outside of the boxes.
- You may fix the box with rubber bands after gluing it. This will save you time and simplify the assembly.
- Make sure to remove the protective covering from BOTH sides of the acrylic pieces. Use a hairdryer for easier removal of it if necessary. Just heat the acrylic surface a little to remove the covering much easier!
- Leave your finished insert overnight to dry completely.

Assembly Supplies



Wood-glue



Stationery knife



Hammer



Cotton swab



Rubber bands



Hairdryer

If something is damaged or broken, please do not return the whole set. Contact us directly on email info@smonex.com or our website smonex.com. Any questions or issues with the Smonex products, we'll do our best to help you. We want our customers to be completely satisfied.

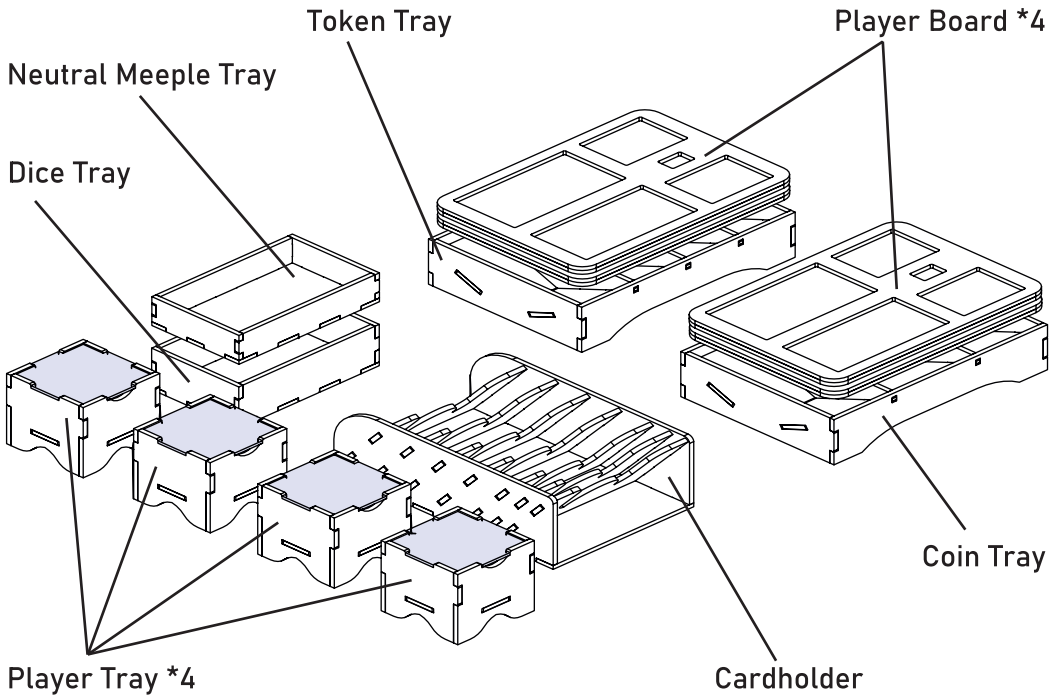
IMPORTANT: Assemble each tray one by one. Please DO NOT take out all the parts from the sheets and mix them. Even though some parts look similar, they are not interchangeable.



ONE SMART BOX Troyes® Organizer

TRSOR01

Compatible with Troyes® board game with All Expansions
Assembly Guide



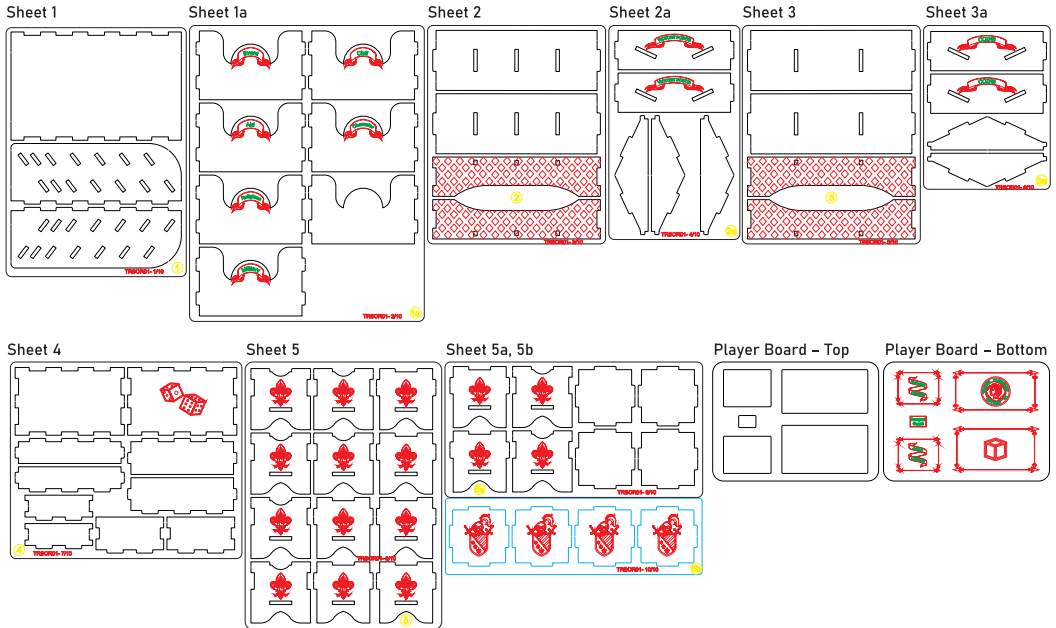


ONE SMART BOX Troyes® Organizer





TRSOR01

Compatible with Troyes® board game with All Expansions
Assembly Guide

- Brief assembly instructions:**
1. Unpack and arrange the sheets in order.
 2. Compare details on the sheets with details in the pictures of the guide.
 3. Study the pictures of unassembled product.
 4. Start your assembly, taking the necessary parts out of the sheets in a certain order.



Legend:

-  Details to be extruded
-  Details not used in this assembly
-  Details to be glued
-  Details to be connected without glue

Components:

- 9 sheets extrusion molds
- 8 board sheets
- 1 acrylic sheet extrusion mold
- 1 sandpaper for stripping parts
- Assembly guide



ONE SMART BOX Troyes® Organizer

TRSOR01

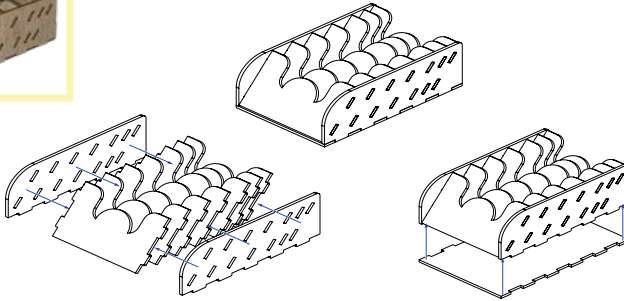
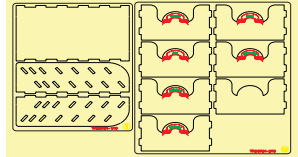
Compatible with Troyes® board game with All Expansions
Assembly Guide

Cardholder

Intended for all cards.



Sheets 1, 1a



Step 1

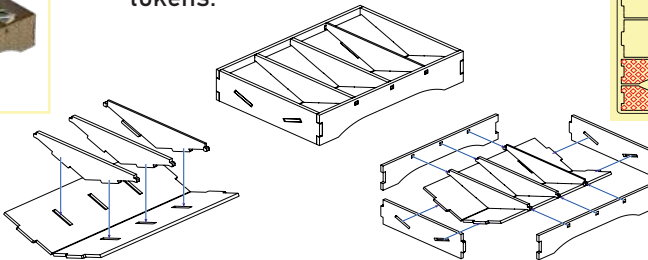
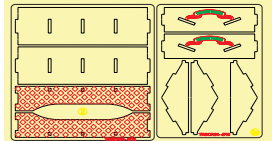
Step 2

Token Tray

Intended for victory points tokens.



Sheets 2, 2a



Step 1

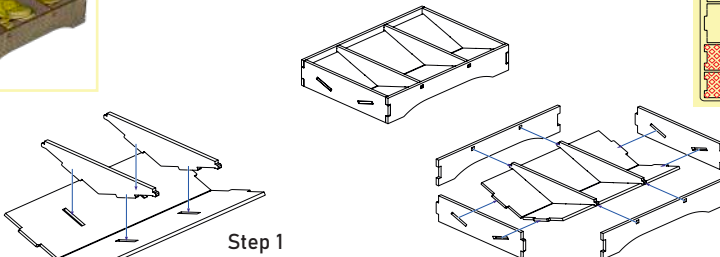
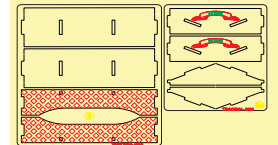
Step 2

Coin Tray

Intended for deniers.



Sheets 3, 3a



Step 1

Step 2



ONE SMART BOX Troyes® Organizer

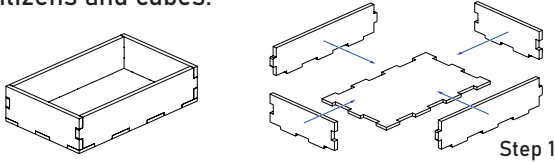
TRSOR01

Compatible with Troyes® board game with All Expansions
Assembly Guide

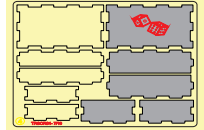
Neutral Meeple Tray



Intended for gray neutral citizens and cubes.



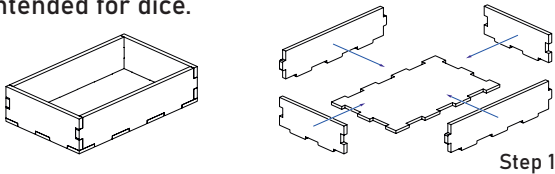
Sheet 4



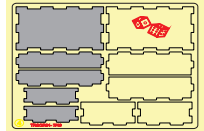
Dice Tray



Intended for dice.



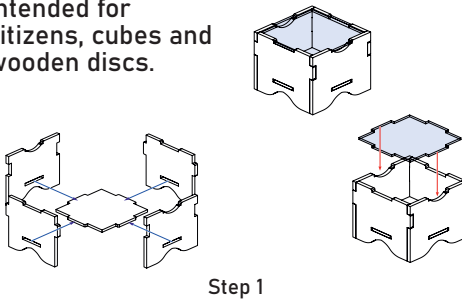
Sheet 4



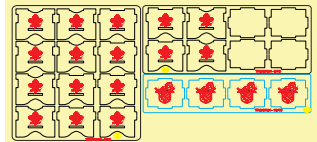
Player Tray *4



Intended for citizens, cubes and wooden discs.



Sheets 5, 5a, 5b

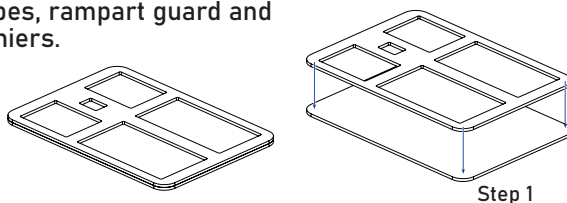


Make sure to remove the protective covering from BOTH sides of the acrylic pieces BEFORE starting assembly.

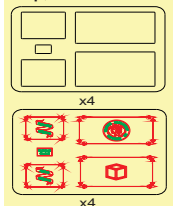
Player Board *4



Intended for citizens, cubes, rampart guard and deniers.



Player Board-
Top, Bottom



Note: the bigger slot should be at the bottom of the board.



ONE SMART BOX

Some other SMONEX products:
Twilight Struggle[®] Organizer TSOR01



Five Tribes[®] Organizer FETSOR01





ONE SMART BOX

Welcome to <https://smonex.com>.


If something is damaged or broken, please do not return the whole set. Contact us directly on email info@smonex.com or our website smonex.com.

Any questions or issues with the Smonex products, we'll do our best to help you. Your satisfaction of it is our top priority.

Thanks for choosing Smonex product. We would be grateful for your feedback, which inspires us and helps to develop further. We'll gladly help you on any matter if you contact us on info@smonex.com.

Share your photos with [#smonex](#) and follow us for all the updates:

 <https://www.facebook.com/Smonexcom>

 https://www.instagram.com/smonex_com/

 https://twitter.com/Smonex_com

 https://www.pinterest.com/smonex/_shop/

 <https://www.youtube.com/c/SmonexSmartOneBox>



Scan QR-code to visit or follow Smonex.