



ONE SMART BOX

Star Wars: Rebellion® Board Game Organizer SWR0R01

Compatible with Star Wars: Rebellion® board game
with Star Wars: Rebellion – Rise of the Empire expansion
Assembly Guide



<https://smonex.com>

NOT A CHILDREN TOY
AGE 14+

Created for:

- Star Wars: Rebellion Base Game
- Star Wars: Rebellion – Rise of the Empire Expansion

Star Wars: Rebellion® is a registered trademark of Fantasy Flight Games. Any mention of Star Wars: Rebellion® is for reference purposes only. ALL RIGHTS RESERVED by their respective trademark holders. No challenge to any intellectual property rights is intended or implied by representations of compatibility and no endorsements of any of our products by any other company is implied or represented.



ONE SMART BOX

Star Wars: Rebellion® Board Game Organizer SWR0R01

Compatible with Star Wars: Rebellion® board game
with Star Wars: Rebellion – Rise of the Empire expansion
Assembly Guide

Tips and tricks

- To assemble each tray you need a wood glue for extra strength. (We recommend Titebond 2 Wood Glue or Beacon 527).
- Please make sure you assembled each tray correctly before gluing it together.
- Use stationery knife to cut the bits that connect details to the frame.
- Remove the details from the frame with a rotational motion along the axis formed by the bits you just cut.
- Use stationery knife and sandpaper to remove all the remaining connection bits.
- Please note that the engraving must be on the outside of the boxes.
- You may fix the box with rubber bands after gluing it. This will save you time and simplify the assembly.
- Make sure to remove the protective covering from BOTH sides of the acrylic pieces. Use a hairdryer for easier removal of it if necessary. Just heat the acrylic surface a little to remove the covering much easier!
- Leave your finished insert overnight to dry completely.

Assembly Supplies



Wood-glue



Stationery knife



Hammer



Cotton swab



Rubber bands



Hairdryer

If something is damaged or broken, please do not return the whole set. Contact us directly on email info@smonex.com or our website smonex.com. Any questions or issues with the Smonex products, we'll do our best to help you. We want our customers to be completely satisfied.

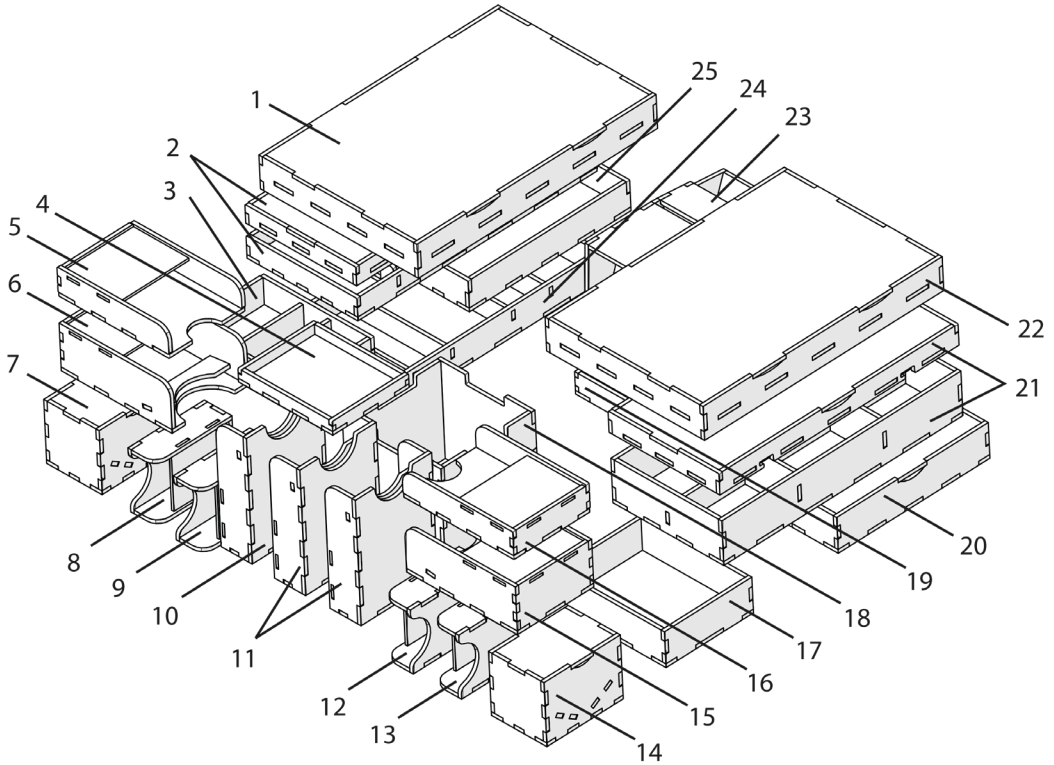
IMPORTANT: Assemble each tray one by one. Please DO NOT take out all the parts from the sheets and mix them. Even though some parts look similar, they are not interchangeable.



ONE SMART BOX

Star Wars: Rebellion® Board Game Organizer SWR0R01

Compatible with Star Wars: Rebellion® board game
with Star Wars: Rebellion – Rise of the Empire expansion
Assembly Guide



- 1 - Rebel Leader Tray
- 2 - Rebel Fleet Trays *2
- 3 - Ground Defense Tray
- 4 - Logo Tray
- 5 - Project Cardholder
- 6 - Mission Cardholders 1
- 7 - Rebel Loyalty Marker Tray
- 8 - Action Cardholders 1
- 9 - Tactic Cardholder
- 10 - Project Cardholder
- 11 - Advanced Tactic Cardholders *2
- 12 - Probe Cardholder
- 13 - Action Cardholders 2

- 14 - Subjugation and Imperial Loyalty Marker Tray
- 15 - Mission Cardholders 2
- 16 - Objective Cardholders *2
- 17 - Ground Unit Trays 2
- 18 - Star Destroyer Tray
- 19 - Ground Unit Trays 1
- 20 - Stormtrooper Tray
- 21 - Imperial Fleet Trays *2
- 22 - Imperial Leader Tray
- 23 - Dice Tower and Tray
- 24 - Markers and Attachment Rings Tray
- 25 - Rebel Trooper and Vanguard Tray



ONE SMART BOX

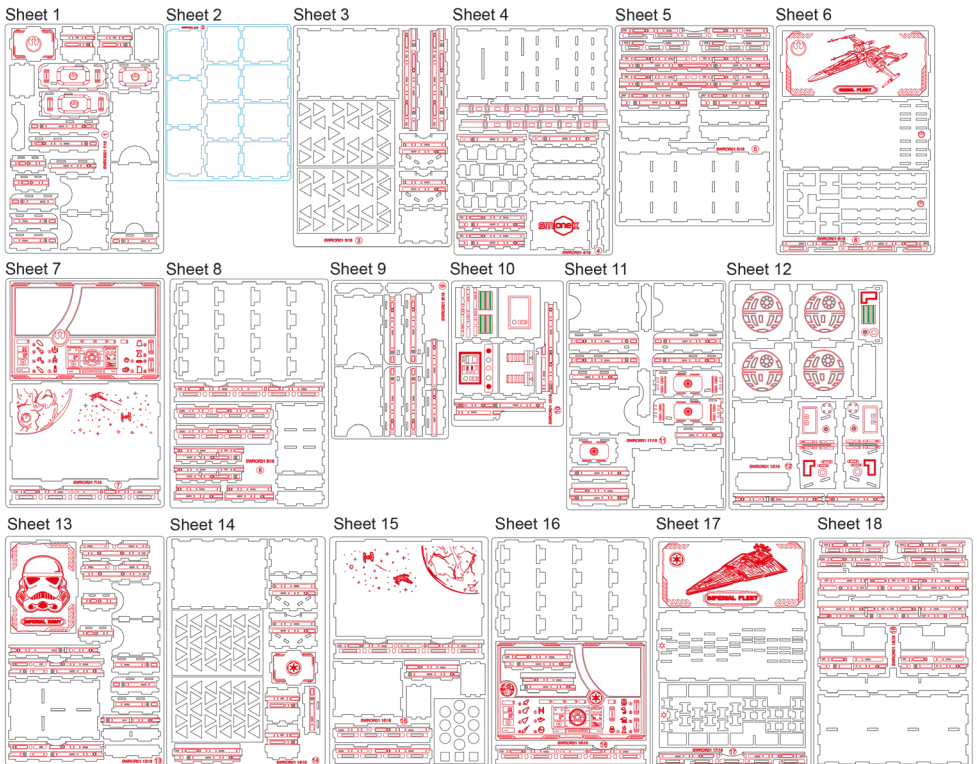
Star Wars: Rebellion® Board Game Organizer SWR0R01

Compatible with Star Wars: Rebellion® board game
with Star Wars: Rebellion – Rise of the Empire expansion

Assembly Guide

Brief assembly instructions:

1. Unpack and arrange the sheets in order.
2. Compare details on the sheets with details in the pictures of the guide.
3. Study the pictures of unassembled product.
4. Start your assembly, taking the necessary parts out of the sheets in a certain order.



Legend:

- Details to be extruded
- Details not used in this assembly
- Details to be glued
- Details to be connected without glue

Components:

- 17 sheets extrusion molds
- 1 acrylic sheet extrusion mold
- 1 sandpaper for stripping parts
- Assembly guide



ONE SMART BOX

Star Wars: Rebellion® Board Game Organizer

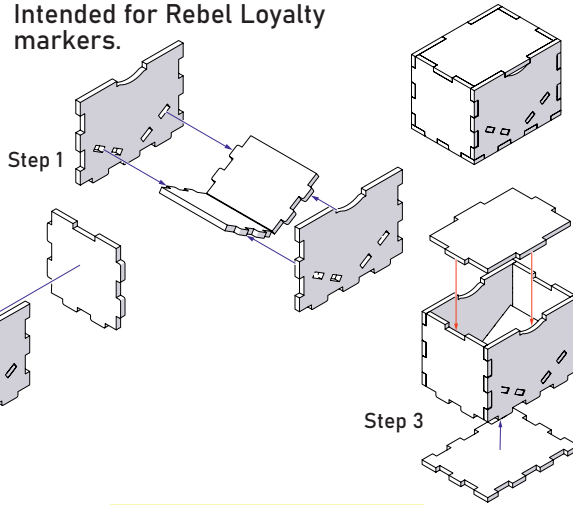
SWR0R01

Compatible with Star Wars: Rebellion® board game
with Star Wars: Rebellion – Rise of the Empire expansion
Assembly Guide

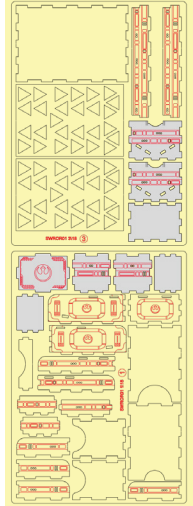
Rebel Loyalty Marker Tray



Intended for Rebel Loyalty markers.



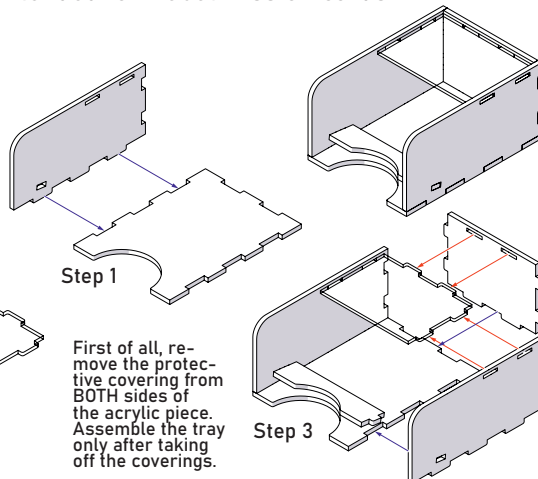
Sheets 1, 3



Mission Cardholder 1

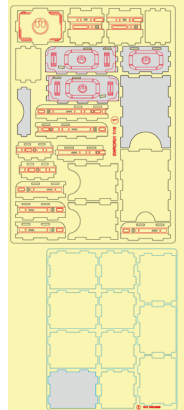


Intended for Rebel Mission cards.



First of all, remove the protective covering from BOTH sides of the acrylic piece. Assemble the tray only after taking off the coverings.

Sheets 1, 2





ONE SMART BOX

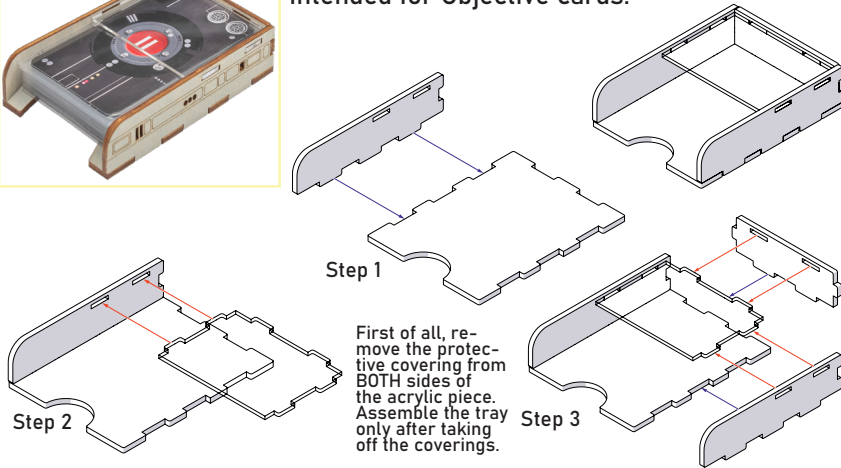
Star Wars: Rebellion® Board Game Organizer SWR0R01

Compatible with Star Wars: Rebellion® board game
with Star Wars: Rebellion – Rise of the Empire expansion
Assembly Guide

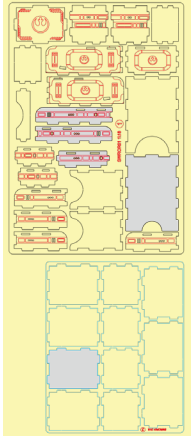
Objective Cardholder 1



Intended for Objective cards.



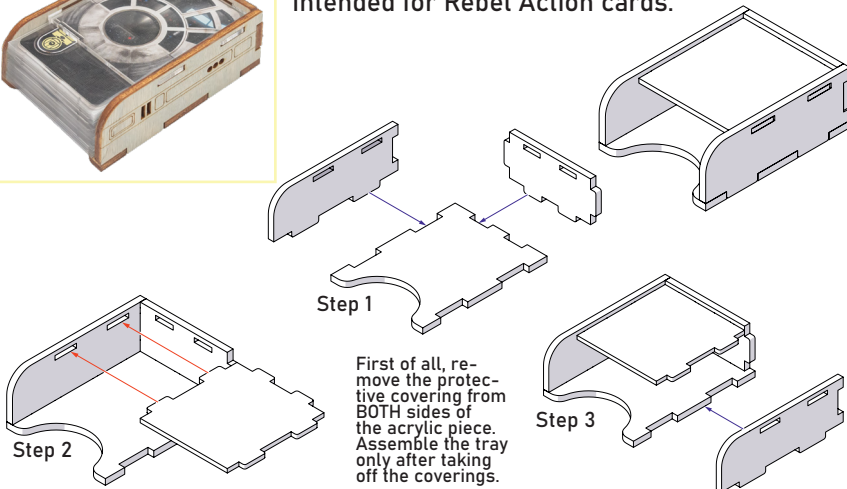
Sheets 1, 2



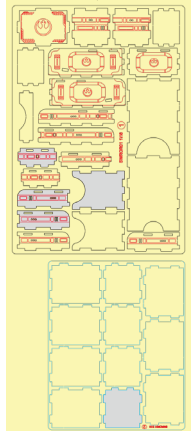
Action Cardholder 1



Intended for Rebel Action cards.



Sheets 1, 2





ONE SMART BOX

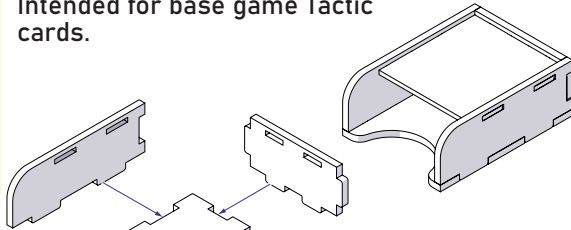
Star Wars: Rebellion® Board Game Organizer SWR0R01

Compatible with Star Wars: Rebellion® board game
with Star Wars: Rebellion – Rise of the Empire expansion
Assembly Guide

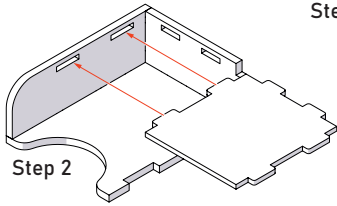
Tactic Cardholder



Intended for base game Tactic cards.



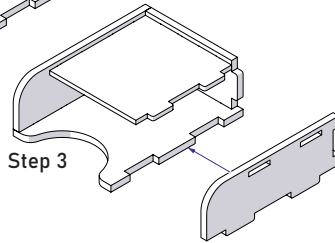
Step 1



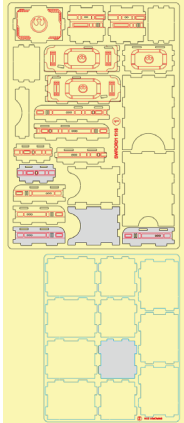
Step 2

First of all, remove the protective covering from BOTH sides of the acrylic piece. Assemble the tray only after taking off the coverings.

Step 3



Sheets 1, 2

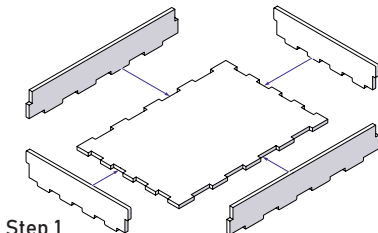
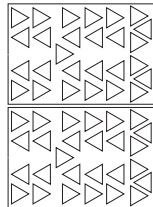


Rebel Trooper and Vanguard Tray

Intended for Rebel troops miniatures.

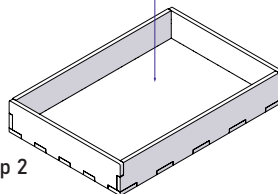


These two sheets should be glued to the bottom of the tray. Please dry-fit them first and check if the miniatures fit the slots. If they don't please use a piece of sandpaper to widen the slots a bit.

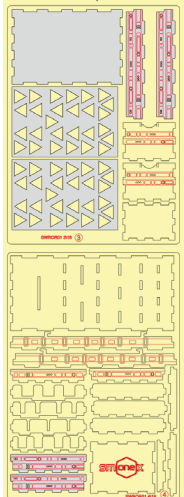


Step 1

Step 2



Sheets 3, 4





ONE SMART BOX

Star Wars: Rebellion® Board Game Organizer

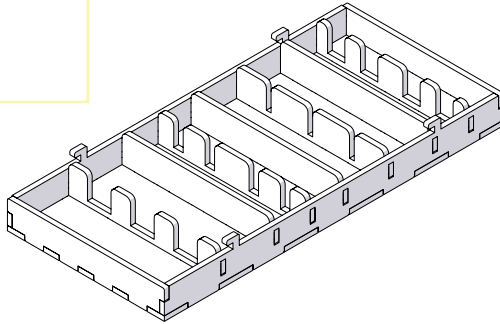
SWR0R01

Compatible with Star Wars: Rebellion® board game
with Star Wars: Rebellion – Rise of the Empire expansion

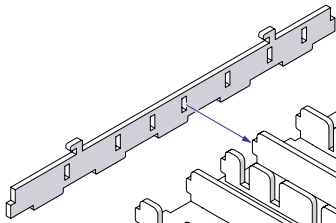
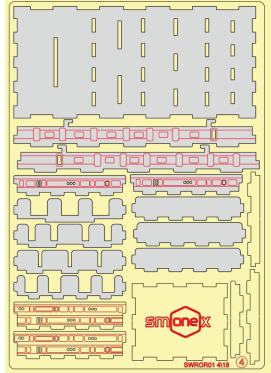
Assembly Guide

Rebel Fleet Tray 2

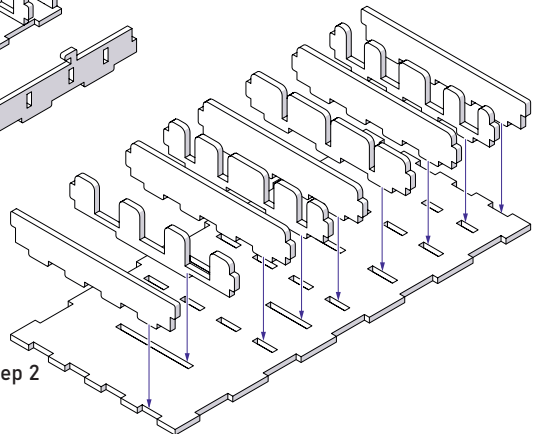
Intended for Rebel fleet
miniatures.



Sheet 4



Step 1



Step 2



ONE SMART BOX

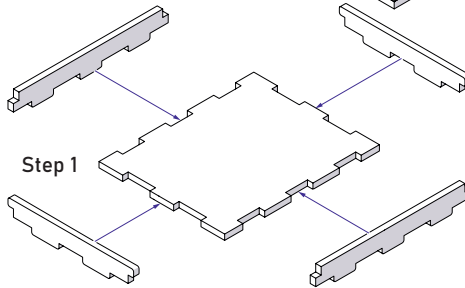
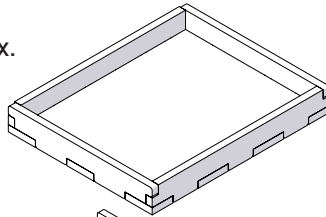
Star Wars: Rebellion® Board Game Organizer SWR0R01

Compatible with Star Wars: Rebellion® board game
with Star Wars: Rebellion – Rise of the Empire expansion
Assembly Guide

Logo Tray

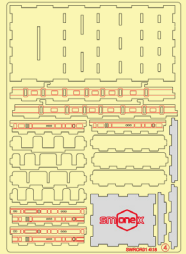
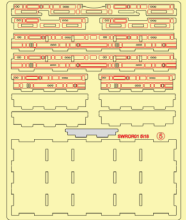


Intended for filling
the space in the box.



Step 1

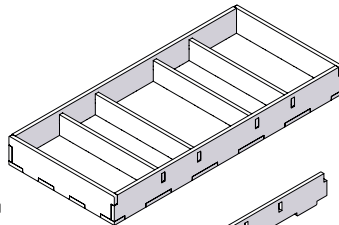
Sheets 4, 5



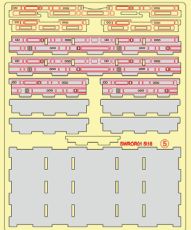
Markers and Attachment Rings Tray



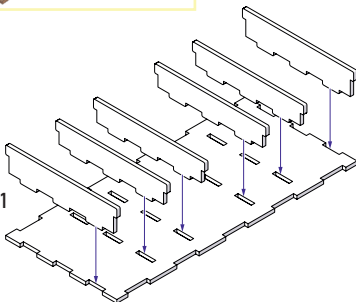
Intended for Attachment Rings, Damage,
Sabotage and Time markers.



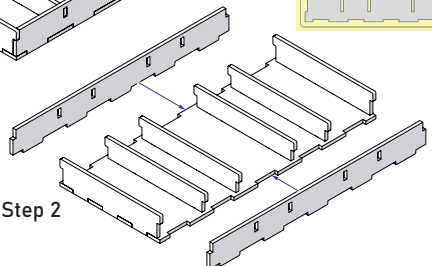
Sheet 5



Step 1



Step 2





ONE SMART BOX

Star Wars: Rebellion® Board Game Organizer

SWROR01

Compatible with Star Wars: Rebellion® board game
with Star Wars: Rebellion – Rise of the Empire expansion

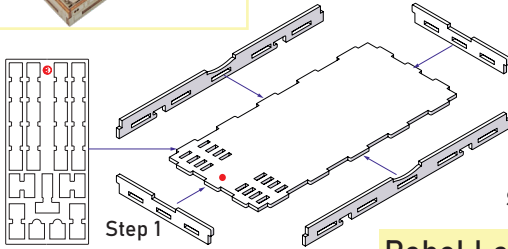
Assembly Guide

Rebel Fleet Tray 1

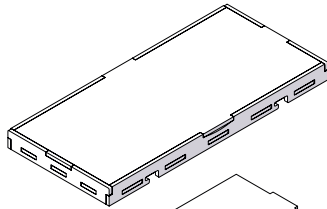


Intended for Rebel fleet miniatures.

This sheet should be glued to the bottom of the tray. Please dry-fit it first and check if the miniatures fit the slots. If they don't please use a piece of sandpaper to widen the slots a bit.

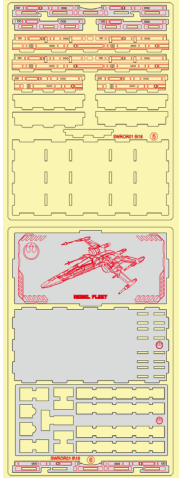


Step 1



Step 2

Sheets 5, 6

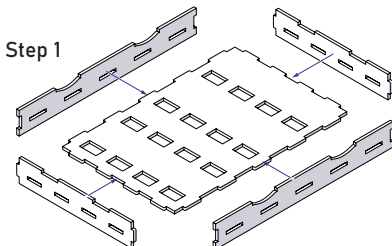


Rebel Leader Tray

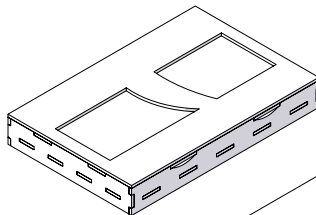
Intended for Rebel Leaders miniatures.



Please dry fit two upper pieces to make sure the engravings on the lower one correspond to the slot on the upper sheet.

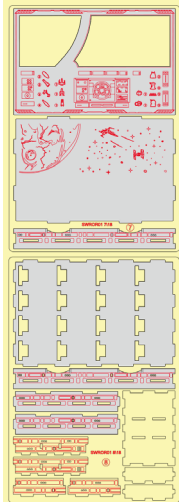


Step 1



Step 2

Sheets 7, 8





ONE SMART BOX

Star Wars: Rebellion® Board Game Organizer

SWR0R01

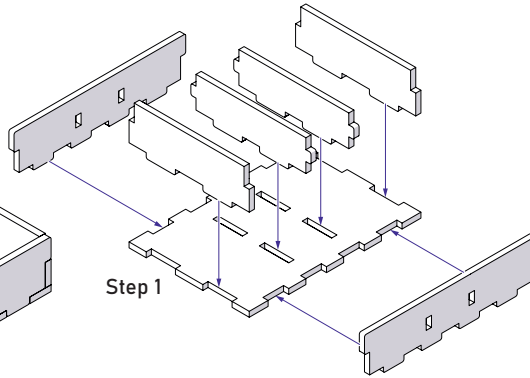
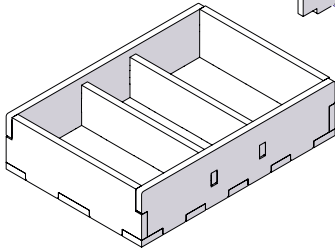
Compatible with Star Wars: Rebellion® board game
with Star Wars: Rebellion – Rise of the Empire expansion

Assembly Guide

Ground Defense Tray

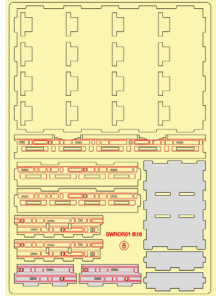


Intended for Rebel Ground Defense Units miniatures.



Step 1

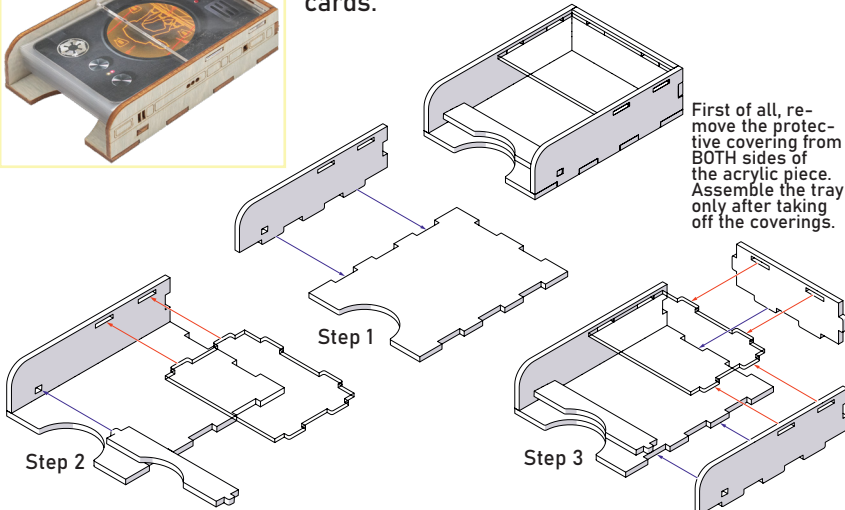
Sheet 8



Advanced Tactic Cardholder 1



Intended for Rebel Advanced Tactic cards.



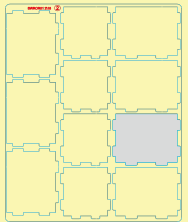
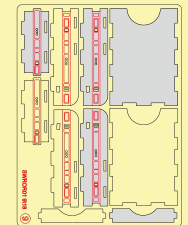
Step 1

Step 2

Step 3

First of all, remove the protective covering from BOTH sides of the acrylic piece. Assemble the tray only after taking off the coverings.

Sheets 2, 9





ONE SMART BOX

Star Wars: Rebellion® Board Game Organizer

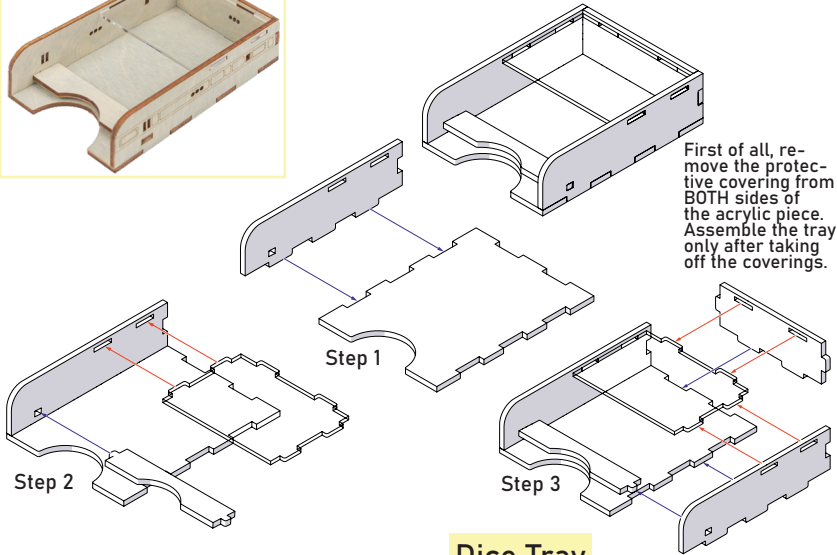
SWR0R01

Compatible with Star Wars: Rebellion® board game
with Star Wars: Rebellion – Rise of the Empire expansion
Assembly Guide

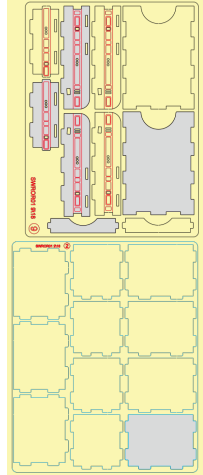
Objective Cardholder 2



Intended for Advanced Tactic cards.



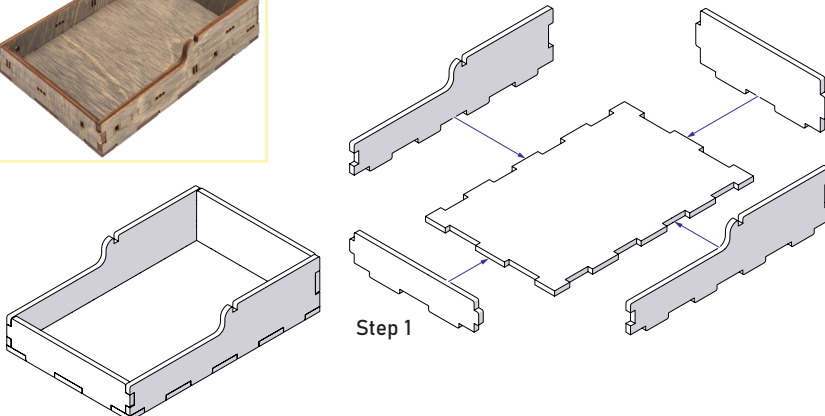
Sheets 2, 9



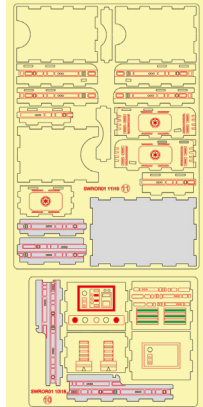
Dice Tray



Intended for dice.



Sheets 10, 11





ONE SMART BOX

Star Wars: Rebellion® Board Game Organizer

SWR0R01

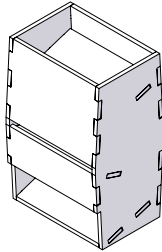
Compatible with Star Wars: Rebellion® board game
with Star Wars: Rebellion – Rise of the Empire expansion

Assembly Guide

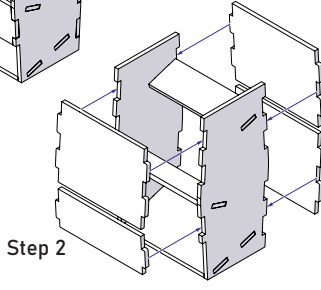
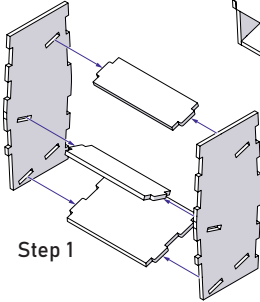
Dice Tower



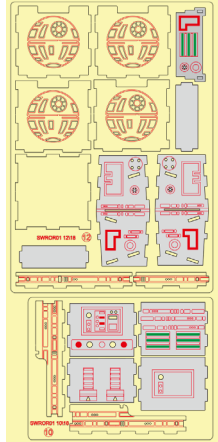
Intended for dice.



You can store
your dice inside
the tower.



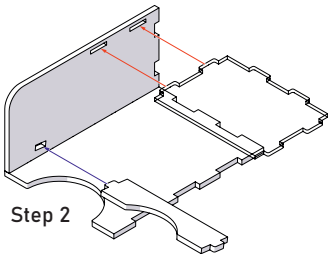
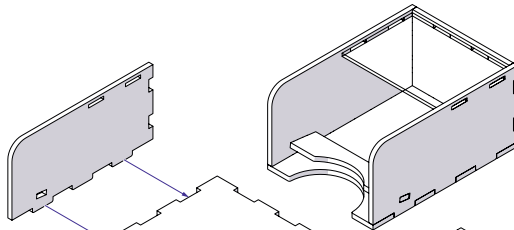
Sheets 10, 12



Mission Cardholder 2



Intended for Imperial Mission cards.

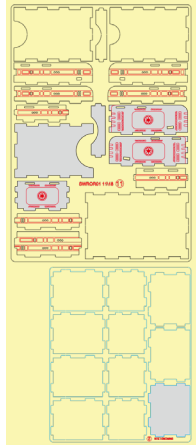


Step 1

First of all, re-
move the protec-
tive covering from
BOTH sides of
the acrylic piece.
Assemble the tray
only after taking
off the coverings.

Step 3

Sheets 2, 11





ONE SMART BOX

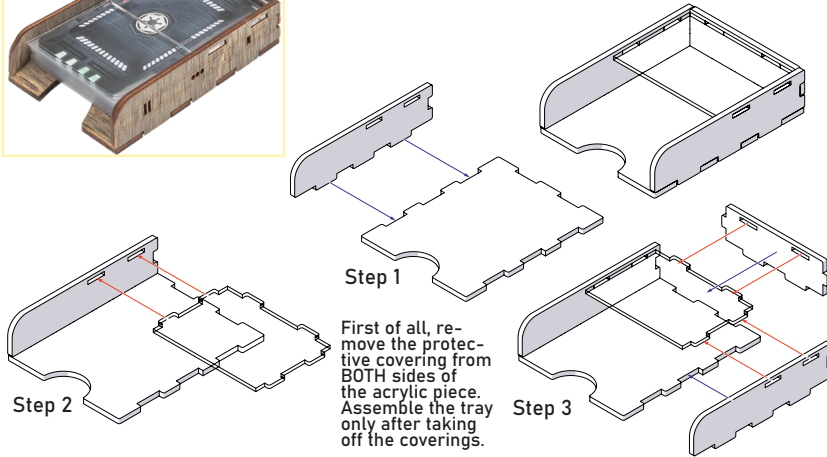
Star Wars: Rebellion® Board Game Organizer SWR0R01

Compatible with Star Wars: Rebellion® board game
with Star Wars: Rebellion – Rise of the Empire expansion
Assembly Guide

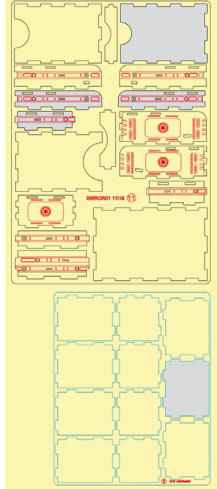
Project Cardholder



Intended for Imperial Project cards.



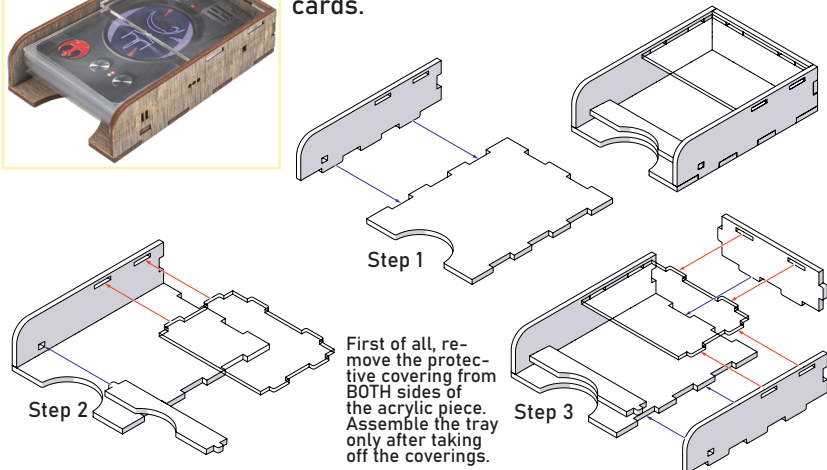
Sheets 2, 11



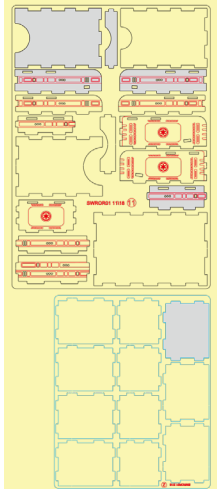
Advanced Tactic Cardholder 2



Intended for Imperial Advanced Tactic cards.



Sheets 2, 11





ONE SMART BOX

Star Wars: Rebellion® Board Game Organizer

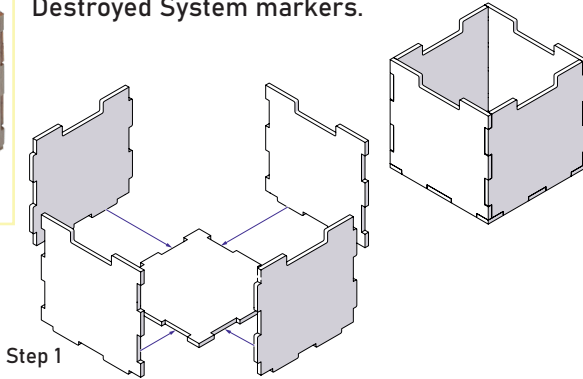
SWR0R01

Compatible with Star Wars: Rebellion® board game
with Star Wars: Rebellion – Rise of the Empire expansion
Assembly Guide

Star Destroyer Tray

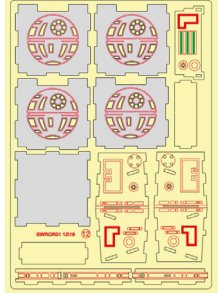


Intended for Star Destroyer and Destroyed System markers.



Step 1

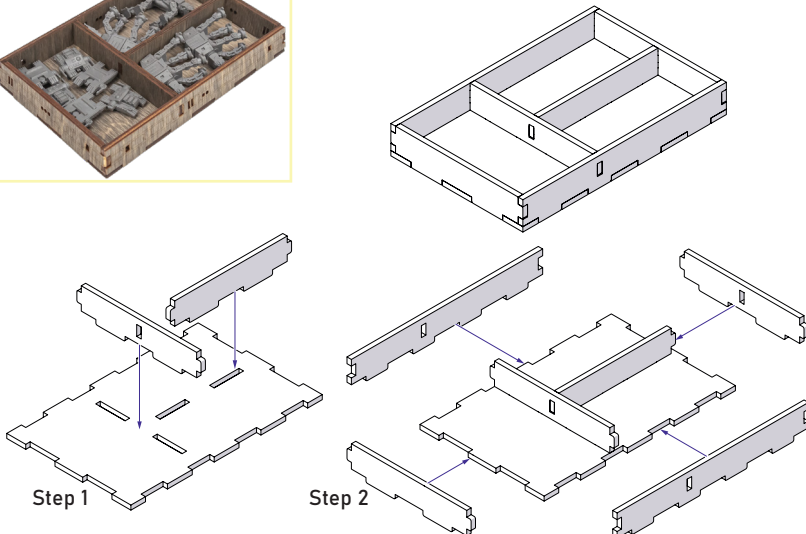
Sheet 12



Ground Unit Tray



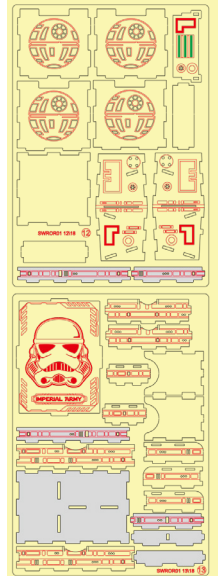
Intended for AT-AT and assault tank.



Step 1

Step 2

Sheets 12, 13





ONE SMART BOX

Star Wars: Rebellion® Board Game Organizer

SWR0R01

Compatible with Star Wars: Rebellion® board game with Star Wars: Rebellion – Rise of the Empire expansion

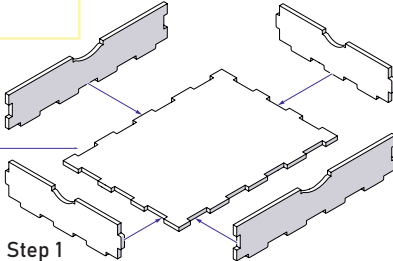
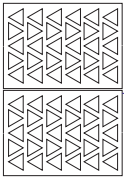
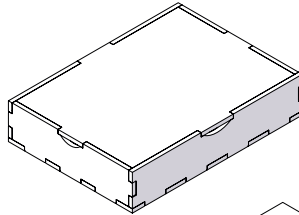
Assembly Guide

Stormtrooper Tray

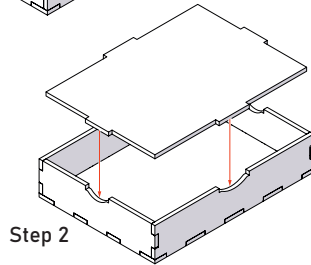


Intended for Stormtroopers.

These two sheets should be glued to the bottom of the tray. Please dry-fit them first and check if the miniatures fit the slots. If they don't please use a piece of sandpaper to widen the slots a bit.

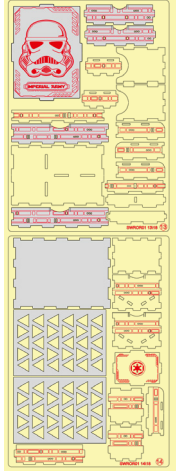


Step 1



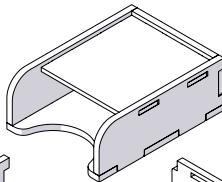
Step 2

Sheets 13, 14

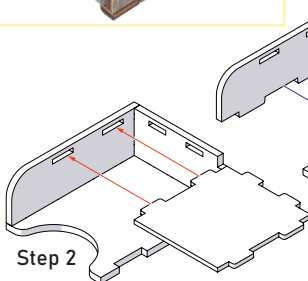


Action Cardholder 2

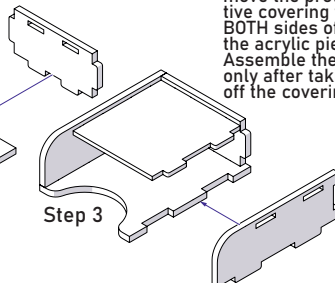
Intended for Imperial Action cards.



Step 1

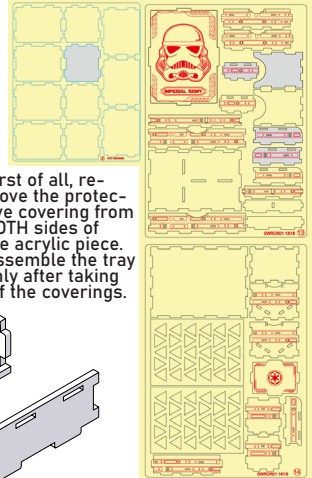


Step 2



Step 3

Sheets 2, 13, 14



First of all, remove the protective covering from BOTH sides of the acrylic piece. Assemble the tray only after taking off the coverings.



ONE SMART BOX

Star Wars: Rebellion® Board Game Organizer

SWR0R01

Compatible with Star Wars: Rebellion® board game with Star Wars: Rebellion – Rise of the Empire expansion

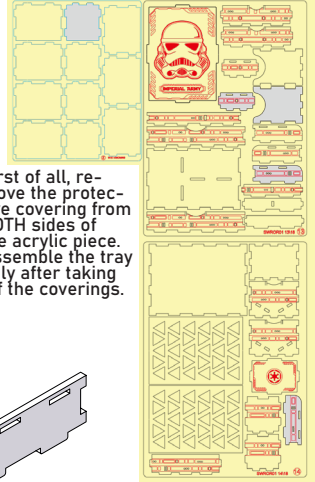
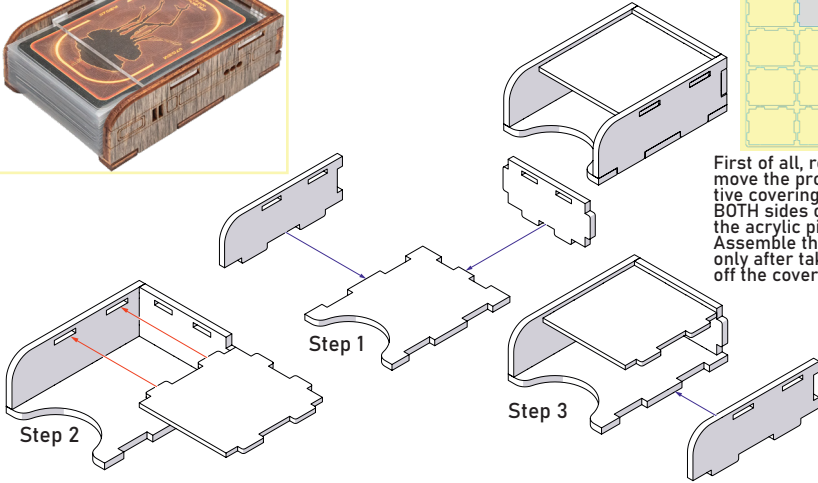
Assembly Guide

Probe Cardholder



Intended for Probe cards.

Sheets 2, 13, 14

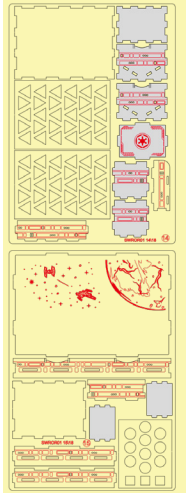
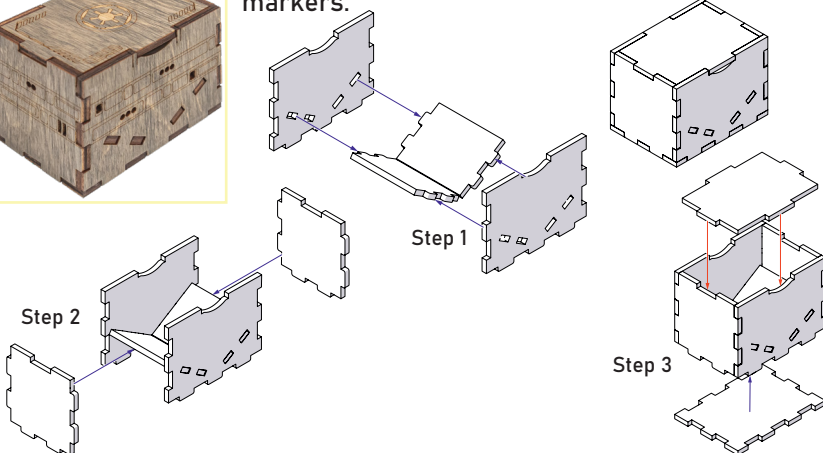


Subjugation and Imperial Loyalty Marker Tray



Intended for Subjugation and Imperial Loyalty markers.

Sheets 14, 15





ONE SMART BOX

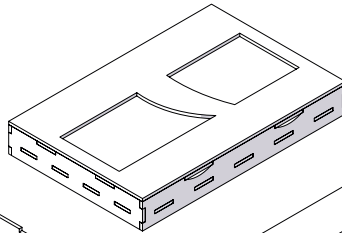
Star Wars: Rebellion® Board Game Organizer SWR0R01

Compatible with Star Wars: Rebellion® board game
with Star Wars: Rebellion – Rise of the Empire expansion
Assembly Guide

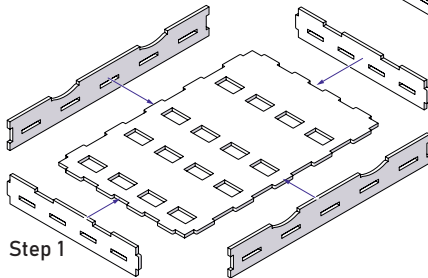
Imperial Leader Tray



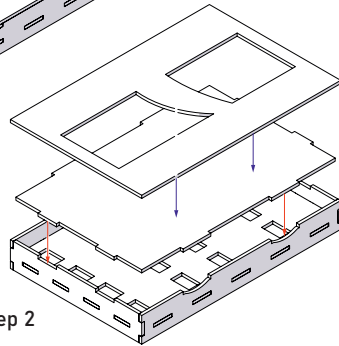
Intended for Imperial Leaders miniatures.



Please dry fit two upper pieces to make sure the engravings on the lower one correspond to the slot on the upper sheet.

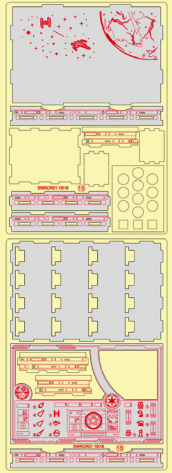


Step 1



Step 2

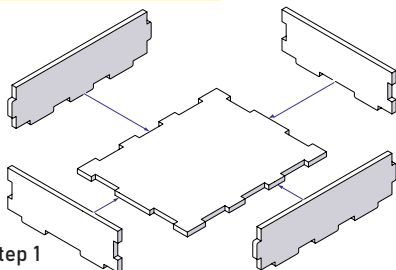
Sheets 15, 16



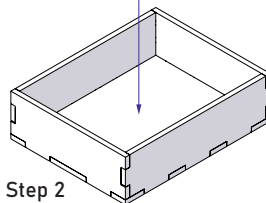
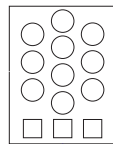
Ground Unit Tray 2



Intended for AT-ST and Shield Bunker.



Step 1



Step 2

Sheets 14, 15, 16



This sheet should be glued to the bottom of the tray. Please dry-fit it first and check if the miniatures fit the slots. If they don't please use a piece of sandpaper to widen the slots a bit.



ONE SMART BOX

Star Wars: Rebellion® Board Game Organizer

SWR0R01

Compatible with Star Wars: Rebellion® board game with Star Wars: Rebellion – Rise of the Empire expansion

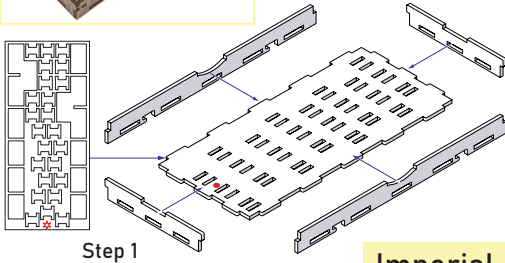
Assembly Guide

Imperial Fleet Tray 1

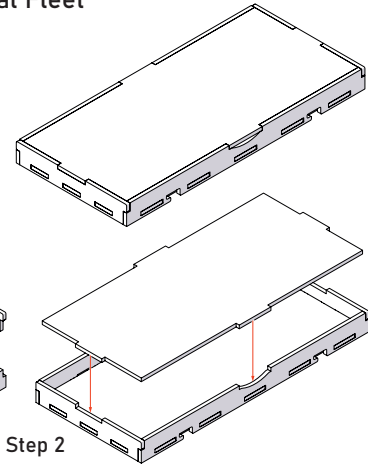


Intended for Imperial Fleet miniatures.

This sheet should be glued to the bottom of the tray. Please dry-fit it first and check if the miniatures fit the slots. If they don't please use a piece of sandpaper to widen the slots a bit.

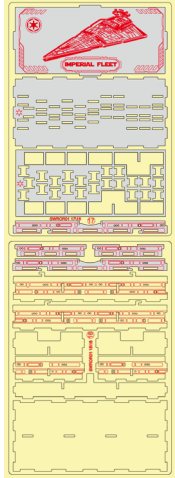


Step 1



Step 2

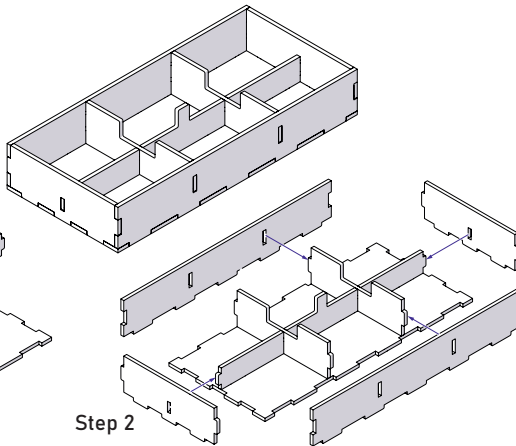
Sheets 17, 18



Imperial Fleet Tray 2



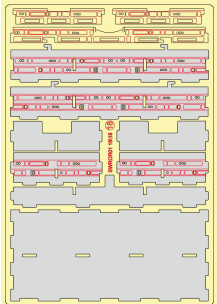
Intended for Imperial Fleet miniature.



Step 1

Step 2

Sheet 18





ONE SMART BOX

Some other SMONEX products:

Terraforming Mars® Organizer TMOR01

Gaia Project® Organizer GPOR01








Welcome to <https://smonex.com>.

If something is damaged or broken, please do not return the whole set. Contact us directly on email info@smonex.com or our website smonex.com. Any questions or issues with the Smonex products, we'll do our best to help you. Your satisfaction of it is our top priority.

Thanks for choosing Smonex product. We would be grateful for your feedback, which inspires us and helps to develop further. We'll gladly help you on any matter if you contact us on info@smonex.com.

Share your photos with **#smonex** and follow us for all the updates:

-  <https://www.facebook.com/Smonexcom>
-  https://www.instagram.com/smonex_com/
-  https://twitter.com/Smonex_com
-  https://www.pinterest.com/smonex/_shop/
-  <https://www.youtube.com/c/SmonexSmartOneBox>



Scan QR-code to visit or follow Smonex.