

smonex

ONE SMART BOX

Scythe Organizer
SEOR01

Compatible® with Scythe®
Assembly Guide



NOT A CHILDREN TOY
AGE 14+

Scythe® is a registered trademark of Stonemaier Games. Any mention of Scythe® is for reference purposes only. ALL RIGHTS RE-SERVED by their respective trademark holders. No challenge to any intellectual property rights is intended or implied by representations of compatibility and no endorsements of any of our products by any other company is implied or represented.

ONE SMART BOX

Scythe Organizer
SEOR01

Compatible with Scythe®
Assembly Guide

Tips and tricks

- To assemble each tray you need a wood glue for extra strength. (We recommend Titebond 2 Wood Glue or Beacon 527)
- Please make sure you assembled each tray correctly before gluing it together.
- Use stationery knife to cut the bits that connect details to the frame.
- Remove the details from the frame with a rotational motion along the axis formed by the bits you just cut.
- Use stationery knife to remove all the remaining connection bits.
- Leave your finished insert overnight to dry completely.
- Use a hairdryer for easier removal of the protective covering from acrylic details. Just heat the acrylic surface a little to remove the covering much easier!

Assembly Supplies



Wood glue



Stationery knife



Hammer



Cotton swabs



Fan

IMPORTANT: Assemble each tray one by one. Please DO NOT take all the parts out of the sheets and mix them. Even though some parts look similar, they are not interchangeable.

smonex

ONE SMART BOX

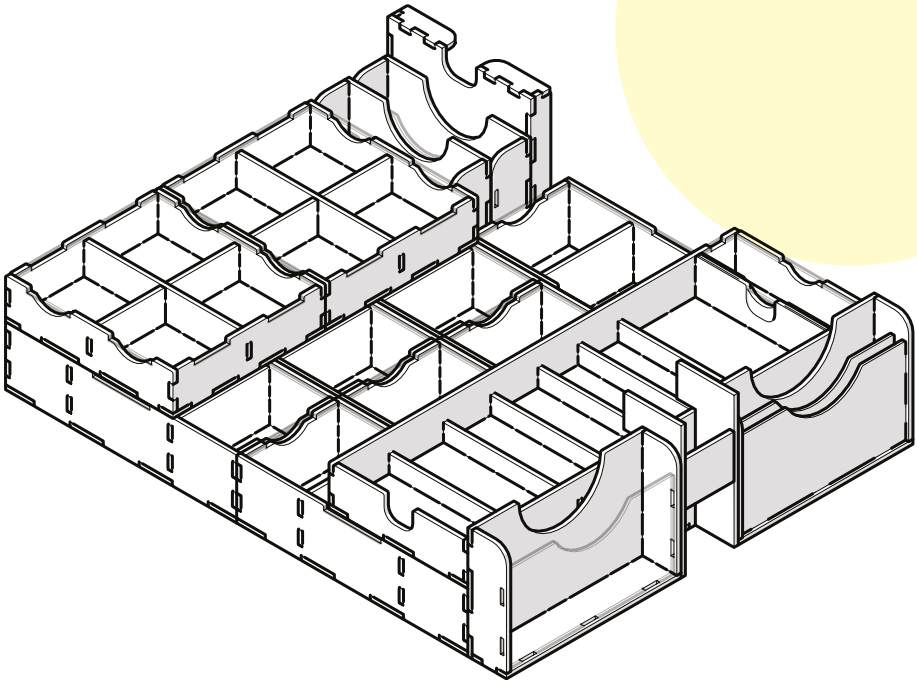
Scythe Organizer

SEOR01

Compatible with Scythe®
Assembly Guide

Created for:

- Scythe
- Scythe: Invaders from Afar
- Scythe: Game board extension



If something is damaged or broken, please do not return the whole set. Contact us directly on email info@smonex.com or our website smonex.com. Any questions or issues with the Smonex products, we'll do our best to help you. We want our customers to be completely satisfied.

Scythe® is a registered trademark of Stonemaier Games. Any mention of Scythe® is for reference purposes only. ALL RIGHTS RE-SERVED by their respective trademark holders. No challenge to any intellectual property rights is intended or implied by representations of compatibility and no endorsements of any of our products by any other company is implied or represented.

smonex

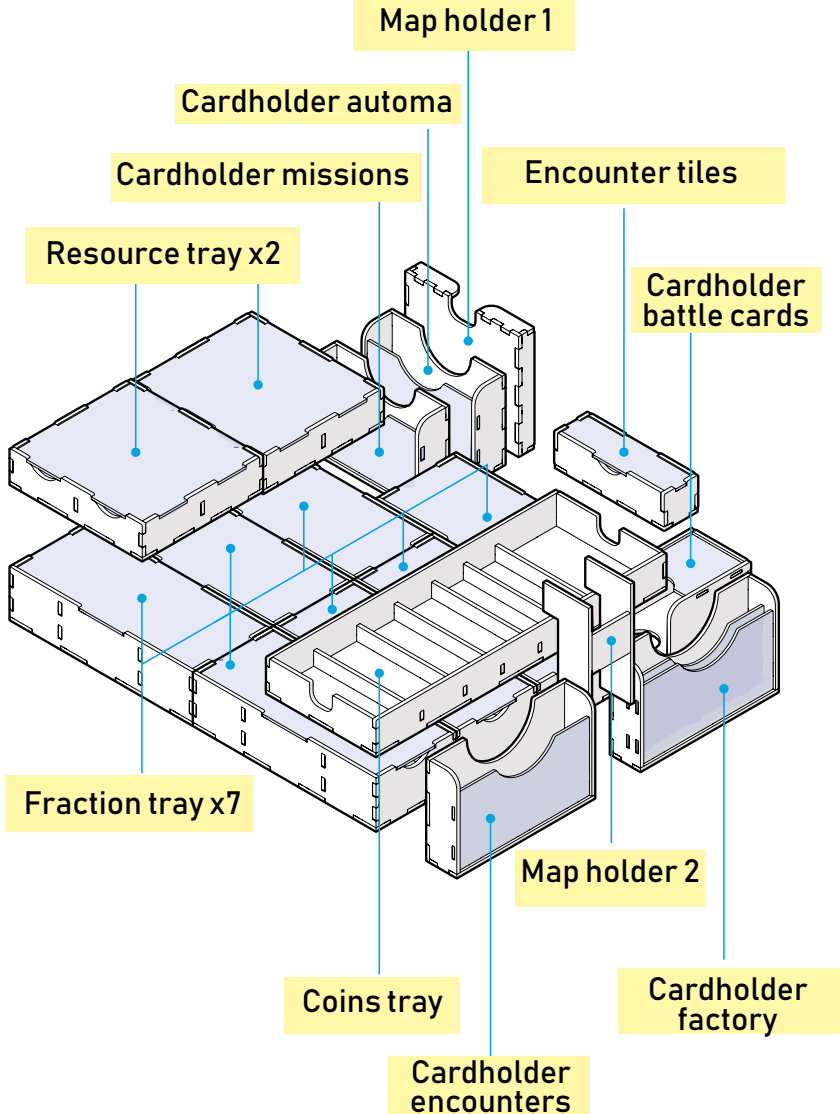
ONE SMART BOX

Scythe Organizer

SEOR01

Compatible with Scythe®

Assembly Guide



Scythe® is a registered trademark of Stonemaier Games. Any mention of Scythe® is for reference purposes only. ALL RIGHTS RE-SERVED by their respective trademark holders. No challenge to any intellectual property rights is intended or implied by representations of compatibility and no endorsements of any of our products by any other company is implied or represented.

ONE SMART BOX

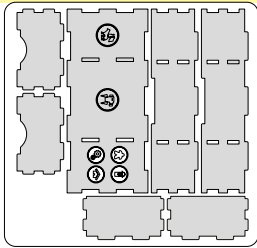
Scythe Organizer

SEOR01

Compatible with Scythe®
Assembly Guide

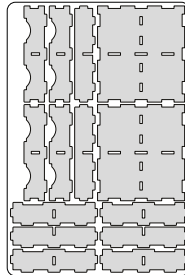
- Brief assembly instructions:**
1. Unpack and arrange the sheets in order.
 2. Compare details on the sheets with details in the pictures of the guide.
 3. Study the pictures of unassembled product.
 4. Start your assembly, taking the necessary parts out of the sheets in a certain order.

Sheet 1a, 1b, 1c, 1d, 1e, 1f, 1g



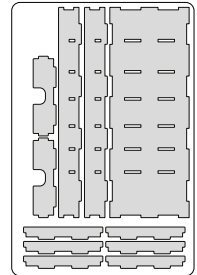
x7

Sheet 2, h, i

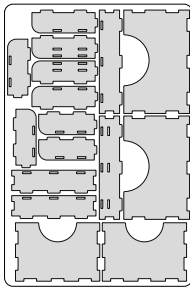


x2

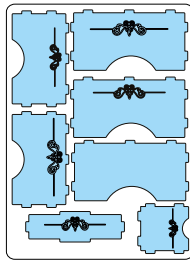
Sheet 3



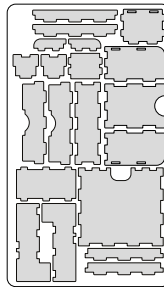
Sheet 4



Sheet 5







Sheet 6



Sheet 7



Legend:

-  Highlighted details to be extruded
-  Details not used in this assembly
-  Details to be connected without glue
-  Details to be glued

Components:

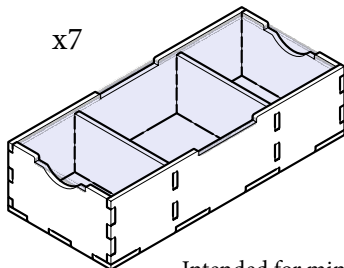
- 12 sheets extrusion molds
- 1 acrylic sheet extrusion mold
- 9 acrylic lids
- 1 sandpaper for stripping parts
- Assembly guide

ONE SMART BOX

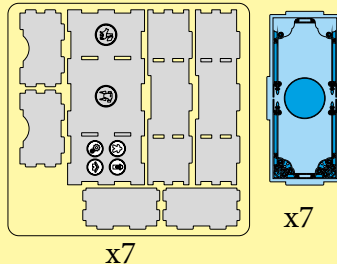
Scythe Organizer
SEOR01

Compatible with Scythe®
Assembly Guide

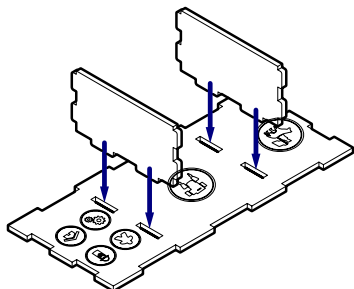
Fraction tray



Sheet 1a, 1b, 1c, 1d, 1e, 1f, 1g



Step 1



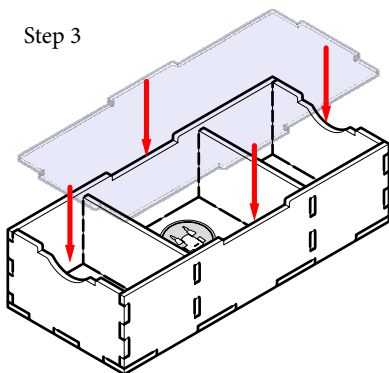
Intended for miniatures, heroes, robots, workers and other elements of the player's nation storage. We recommend using foam inserts for painted miniatures.

Attention:

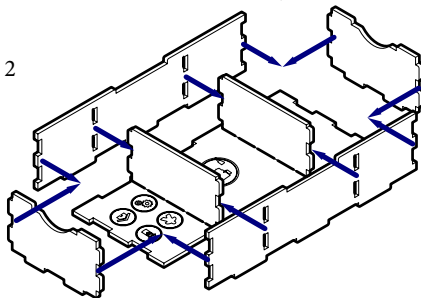
After step 2, until the glue has completely dried, insert the Cover in the right slots. Do not take protective off. Front part should be without engraving.

The Cover should be removed easily.

Step 3



Step 2



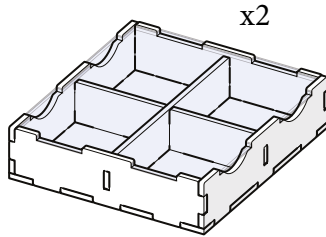
Step 3. Until the glue has completely dried, make sure that the Cover can be easily removed and put back in its place. Only then remove protective covering.

ONE SMART BOX

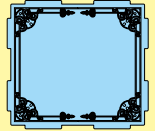
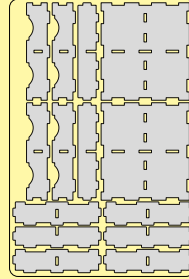
Scythe Organizer
SEOR01

Compatible with Scythe®
Assembly Guide

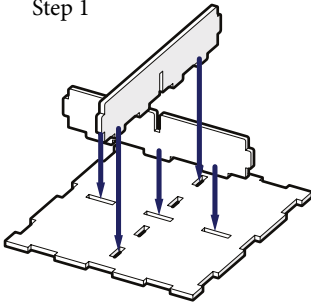
Resource tray



Sheet 2, h, i



Step 1



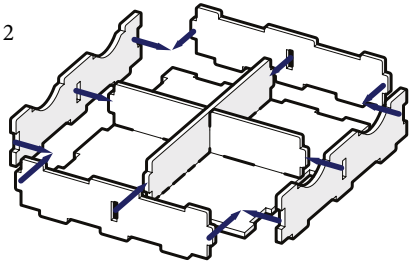
Intended for resources storage. Each type of resources should be put in a separate cell.

Attention:

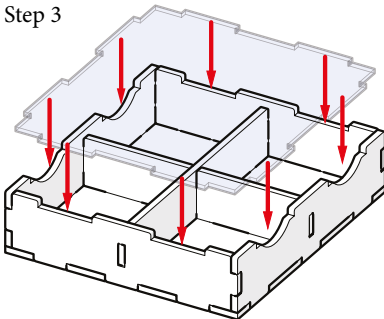
After step 2, until the glue has completely dried, insert the Cover in the right slots. Do not take protective covering off. Front part should be without engraving.

The Cover should be removed easily.

Step 2



Step 3



Step 3. Until the glue has completely dried, make sure that the Cover can be easily removed and put back in its place. Only then remove protective covering.

smonex

ONE SMART BOX

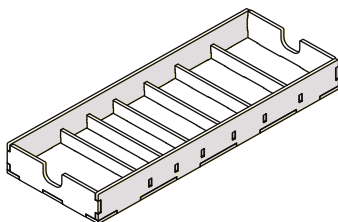
Scythe Organizer
SEOR01

Compatible with Scythe®
Assembly Guide

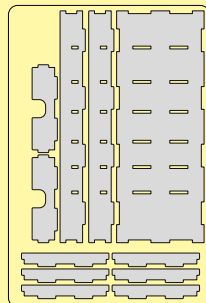
Coins tray



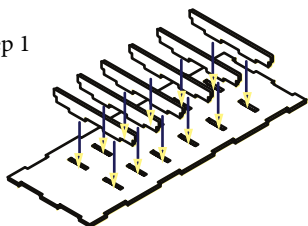
Intended for coin and faction mat storage.



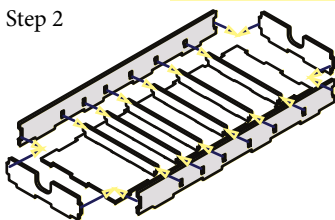
Step 3



Step 1



Step 2



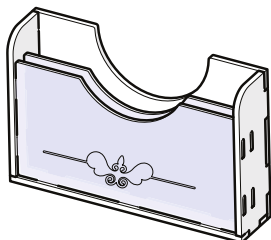
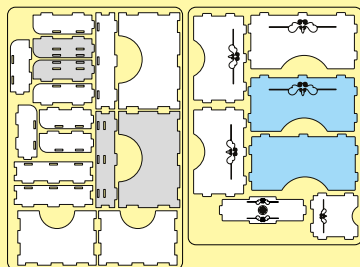
Cardholder factory



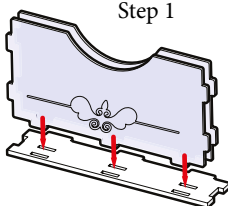
Intended for Factory cards and quick-reference guide storage.

Before step 1 remove protective covering from the both sides of the cover.

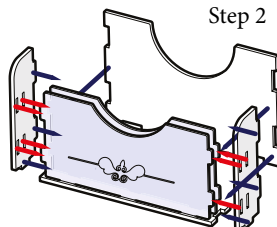
Attention:
The engraved cover should be on the outside of the cardholder. Acrylic covers should be installed without glue.



Step 1



Step 2



Scythe® is a registered trademark of Stonemaier Games. Any mention of Scythe® is for reference purposes only. ALL RIGHTS RE-SERVED by their respective trademark holders. No challenge to any intellectual property rights is intended or implied by representations of compatibility and no endorsements of any of our products by any other company is implied or represented.

smonex

ONE SMART BOX

Scythe Organizer

SEOR01

Compatible with Scythe®

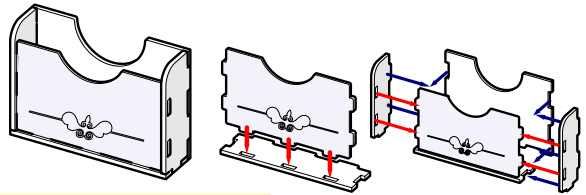
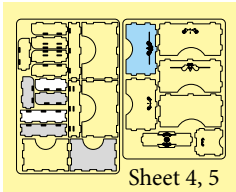
Assembly Guide

Before step 1 remove protective covering from the both sides of the cover.

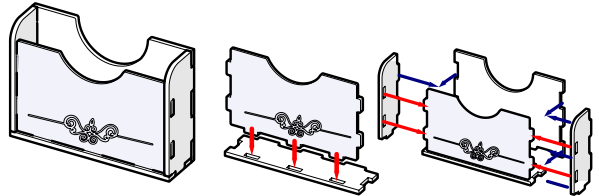
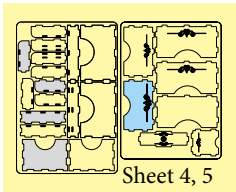
Attention:

The engraved cover should be on the outside of the cardholder. Acrylic covers should be installed without glue.

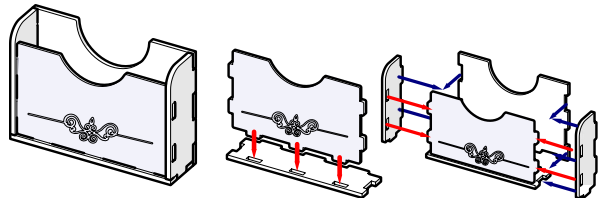
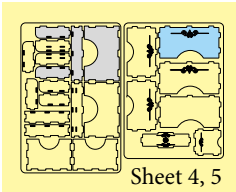
Cardholder Missions



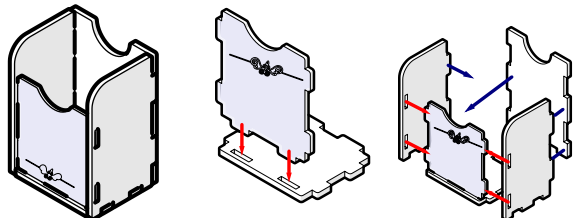
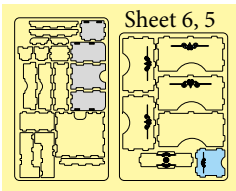
Cardholder Automa



Cardholder Encounters



Cardholder battle cards



Scythe® is a registered trademark of Stonemaier Games. Any mention of Scythe® is for reference purposes only. ALL RIGHTS RE-SERVED by their respective trademark holders. No challenge to any intellectual property rights is intended or implied by representations of compatibility and no endorsements of any of our products by any other company is implied or represented.

smonex

ONE SMART BOX

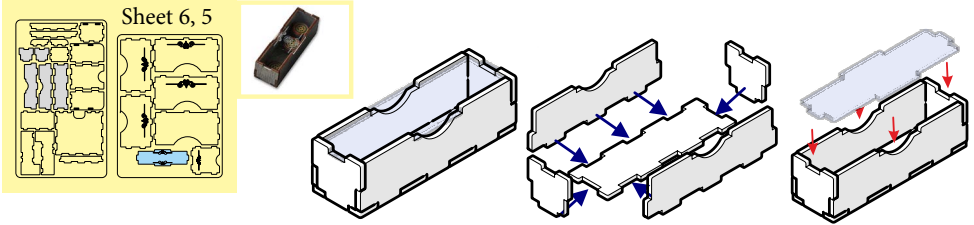
Scythe Organizer

SEOR01

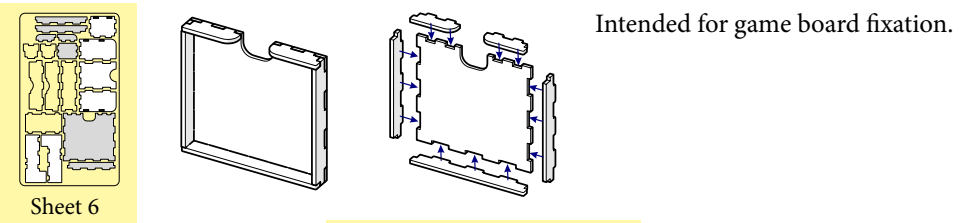
Compatible with Scythe®

Assembly Guide

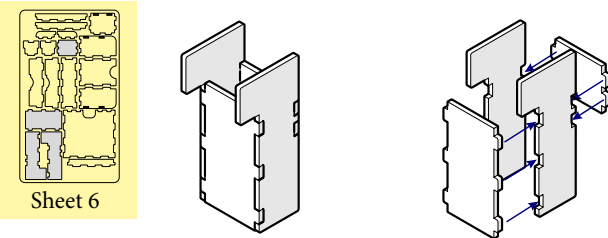
Encounter tiles



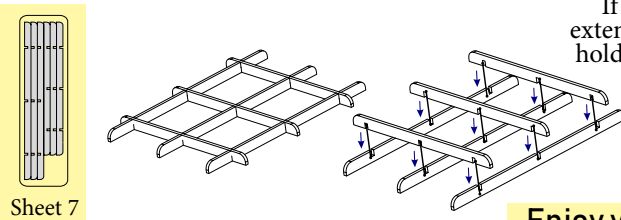
Map Holder 1



Map Holder 2



Scythe: Game board extension*



If you do not have Game board extension, use the assembled Sheet 7 holder for free space instead of new map.

Enjoy your game, dear friends!

Scythe® is a registered trademark of Stonemaier Games. Any mention of Scythe® is for reference purposes only. ALL RIGHTS RE-SERVED by their respective trademark holders. No challenge to any intellectual property rights is intended or implied by representations of compatibility and no endorsements of any of our products by any other company is implied or represented.

smonex

ONE SMART BOX

Scythe Organizer

SEOR01

Compatible with Scythe®
Assembly Guide

Other smonex products:

Terraforming Mars Organizer TMOR01



If you have any questions about assembly,
feel free to contact us through our site:

smonex.com

Scythe® is a registered trademark of Stonemaier Games. Any mention of Scythe® is for reference purposes only. ALL RIGHTS RE-SERVED by their respective trademark holders. No challenge to any intellectual property rights is intended or implied by representations of compatibility and no endorsements of any of our products by any other company is implied or represented.

smonex

ONE SMART BOX

Scythe Organizer

SEOR01

Compatible with Scythe®

Assembly Guide

Other smonex products:

Xia Organizer XAOR01



If you have any questions about assembly,
feel free to contact us through our site:

smonex.com

Scythe® is a registered trademark of Stonemaier Games. Any mention of Scythe® is for reference purposes only. ALL RIGHTS RE-SERVED by their respective trademark holders. No challenge to any intellectual property rights is intended or implied by representations of compatibility and no endorsements of any of our products by any other company is implied or represented.