



# ONE SMART BOX Lost Ruins of Arnak® Organizer

LRAOR01

Compatible with Lost Ruins of Arnak® base game, Expedition Leaders  
Expansion, Solo Mini Expansions and All Promo Cards  
Assembly Guide



<https://smonex.com>

Created for:

- Lost Ruins of Arnak
- Lost Ruins of Arnak: Expedition Leaders
- Lost Ruins of Arnak: Solo Mini Expansions
- Lost Ruins of Arnak Promo Cards

NOT A CHILDREN TOY  
**AGE 14+**

Lost Ruins of Arnak® is a registered trademark of Czech Games Edition. Any mention of Lost Ruins of Arnak® is for reference purposes only. ALL RIGHTS RESERVED by their respective trademark holders. No challenge to any intellectual property rights is intended or implied by representations of compatibility and no endorsements of any of our products by any other company is implied or represented.



# ONE SMART BOX Lost Ruins of Arnak® Organizer

LRAOR01

Compatible with Lost Ruins of Arnak® base game, Expedition Leaders Expansion,  
Solo Mini Expansions and All Promo Cards  
Assembly Guide

## Tips and tricks

- To assemble each tray you need a wood glue for extra strength. (We recommend Titebond 2 Wood Glue or Beacon 527).
- Please make sure you assembled each tray correctly before gluing it together.
- Use stationery knife to cut the bits that connect details to the frame.
- Remove the details from the frame with a rotational motion along the axis formed by the bits you just cut.
- Use stationery knife and sandpaper to remove all the remaining connection bits.
- Please note that the engraving must be on the outside of the boxes.
- You may fix the box with rubber bands after gluing it. This will save you time and simplify the assembly.
- Make sure to remove the protective covering from BOTH sides of the acrylic pieces. Use a hairdryer for easier removal of it if necessary. Just heat the acrylic surface a little to remove the covering much easier!
- Leave your finished insert overnight to dry completely.

## Assembly Supplies



Wood-glue



Stationery knife



Hammer



Cotton swab



Rubber bands



Hairdryer

If something is damaged or broken, please do not return the whole set. Contact us directly on email [info@smonex.com](mailto:info@smonex.com) or our website [smonex.com](http://smonex.com). Any questions or issues with the Smonex products, we'll do our best to help you. We want our customers to be completely satisfied.

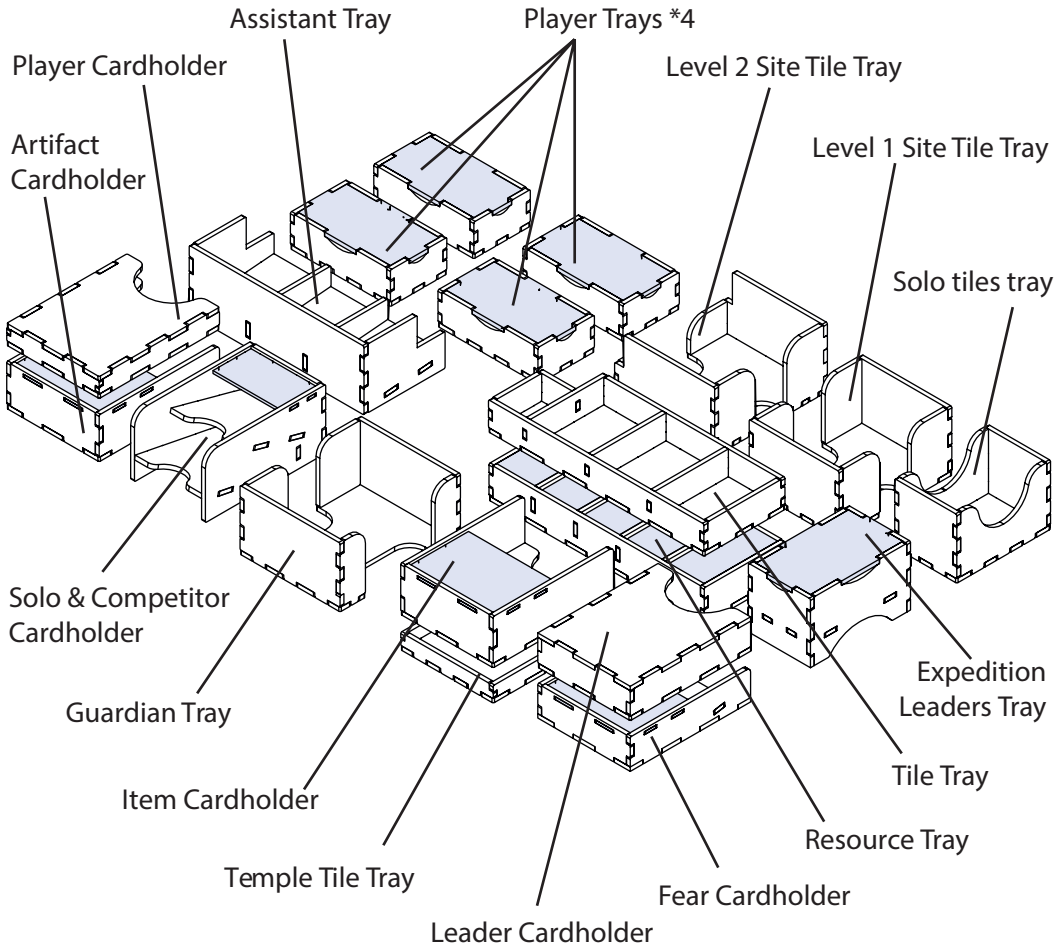
**IMPORTANT:** Assemble each tray one by one. Please DO NOT take out all the parts from the sheets and mix them. Even though some parts look similar, they are not interchangeable.



# ONE SMART BOX Lost Ruins of Arnak® Organizer

LRAOR01

Compatible with Lost Ruins of Arnak® base game, Expedition Leaders Expansion,  
Solo Mini Expansions and All Promo Cards  
Assembly Guide



**Will fit cards in protectors up to 80 microns.**

This is a non-licensed product. ALL RIGHTS RESERVED by their respective trademark holders. No challenge to any intellectual property rights is intended or implied by representations of compatibility and no endorsements of any of our products by any other company is implied or represented.



# ONE SMART BOX

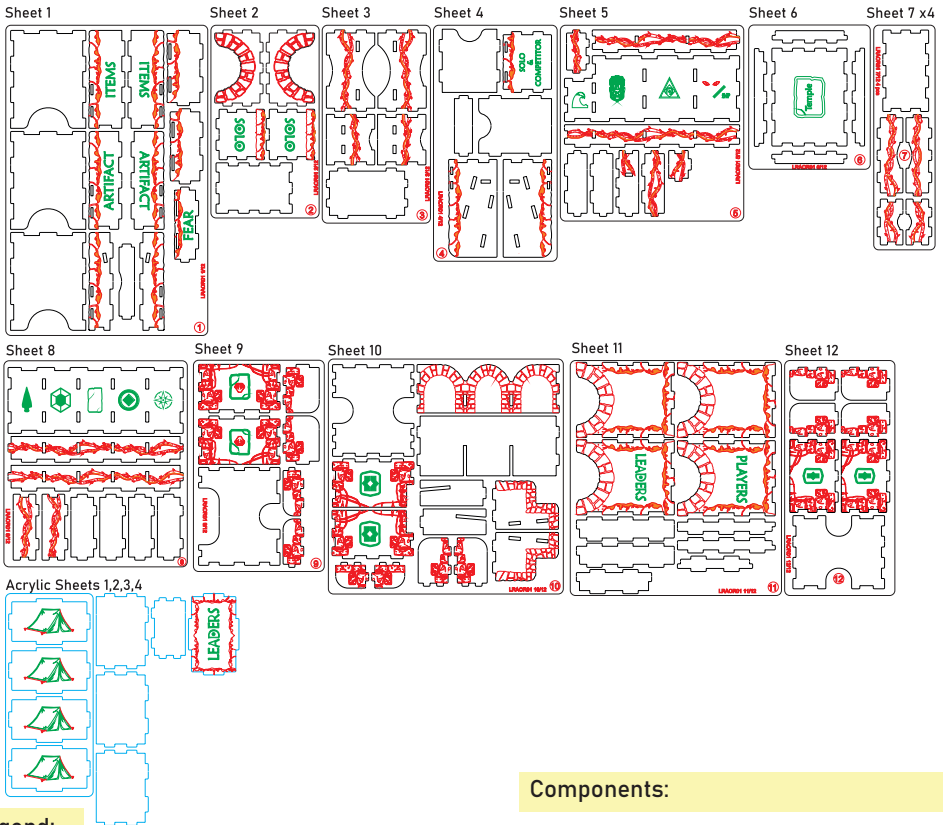
## Lost Ruins of Arnak® Organizer

LRAOR01

Compatible with Lost Ruins of Arnak® base game, Expedition Leaders Expansion, Solo Mini Expansions and All Promo Cards  
**Assembly Guide**

**Brief assembly instructions:**

1. Unpack and arrange the sheets in order.
2. Compare details on the sheets with details in the pictures of the guide.
3. Study the pictures of unassembled product.
4. Start your assembly, taking the necessary parts out of the sheets in a certain order.



**Components:**

- 15 sheets extrusion molds
- 5 acrylic covers
- 1 acrylic sheets extrusion molds
- 1 sandpaper for stripping parts

**Assembly guide**

**Legend:**

- Details to be extruded
- Details not used in this assembly
- Details to be glued
- Details to be connected without glue

This is a non-licensed product. ALL RIGHTS RESERVED by their respective trademark holders. No challenge to any intellectual property rights is intended or implied by representations of compatibility and no endorsements of any of our products by any other company is implied or represented.



# ONE SMART BOX Lost Ruins of Arnak® Organizer

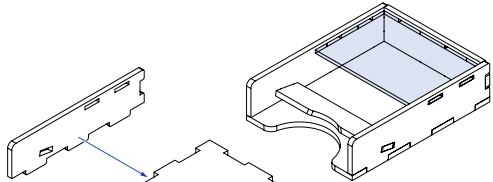
LRAOR01

Compatible with Lost Ruins of Arnak® base game, Expedition Leaders Expansion,  
Solo Mini Expansions and All Promo Cards  
Assembly Guide

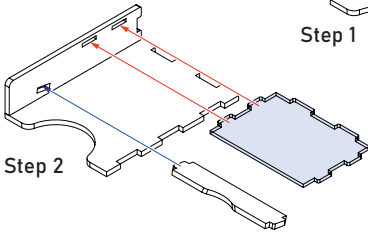
## Fear Cardholder



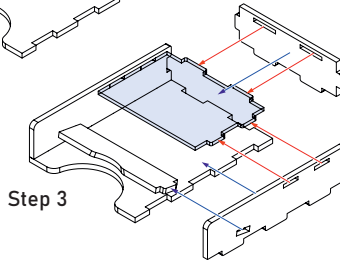
Intended for Fear cards.



Step 1

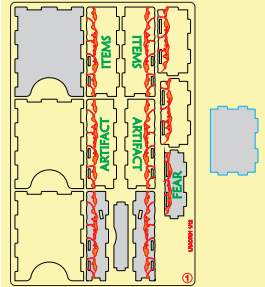


Step 2



Step 3

Sheet 1, Acrylic Sheet 2\*1

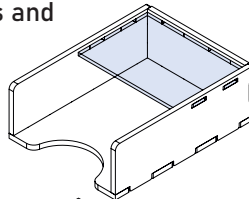


First of all, remove the protective plastic covering from both sides of the acrylic part. Before the final gluing, make sure the lid fits the tray.

## Item and Artifact Cardholders



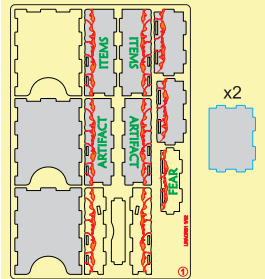
Intended for Items and  
Artifacts cards.



Step 1



Sheet 1, Acrylic Sheet 2\*2



First of all, remove the protective plastic covering from both sides of the acrylic part. Before the final gluing, make sure the lid fits the tray.



# ONE SMART BOX

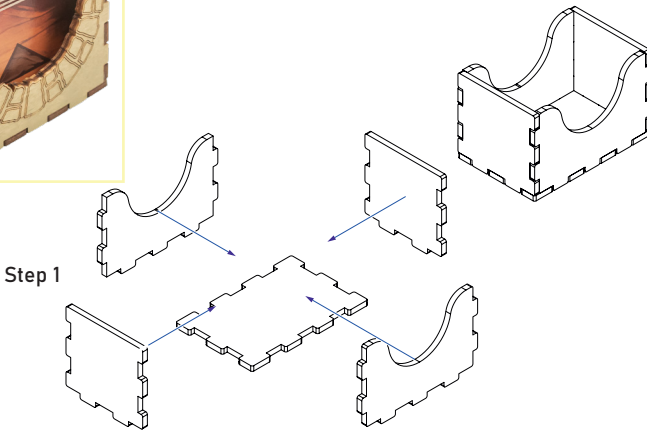
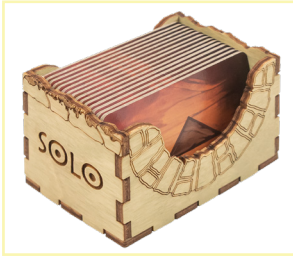
## Lost Ruins of Arnak® Organizer

LRAOR01

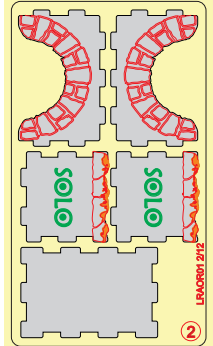
Compatible with Lost Ruins of Arnak® base game, Expedition Leaders Expansion, Solo Mini Expansions and All Promo Cards  
Assembly Guide

### Solo Tiles Tray

Intended for Solo Rival Action tiles.

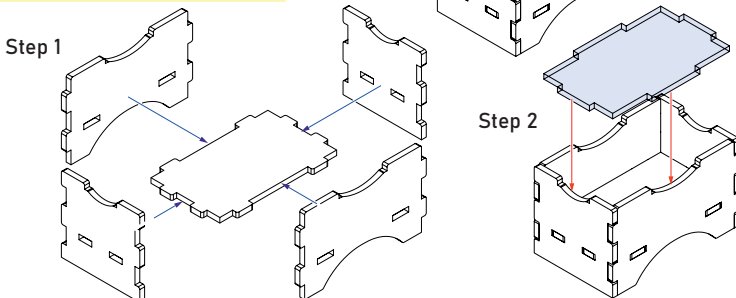


Sheet 2

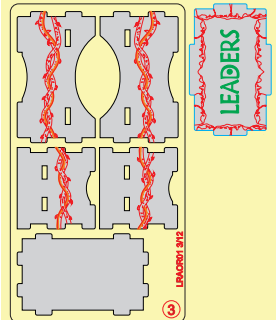


### Expedition Leaders Tray

Intended for 1 Eagle tile,  
1 Archaeologist, 3 Shack tokens,  
6 Random Role tokens.



Sheet 3, Acrylic Sheet 3



Until the glue has completely dried, make sure the lid fits the tray and can be easily removed. Put it back in its place on the tray. Only then carefully remove the protective covering.



# ONE SMART BOX Lost Ruins of Arnak® Organizer

LRAOR01

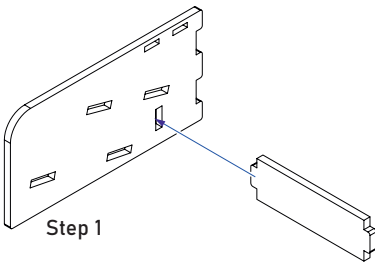
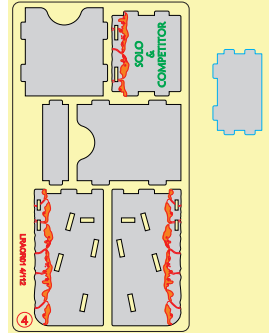
Compatible with Lost Ruins of Arnak® base game, Expedition Leaders Expansion,  
Solo Mini Expansions and All Promo Cards  
Assembly Guide

## Solo & Competitor Cardholder

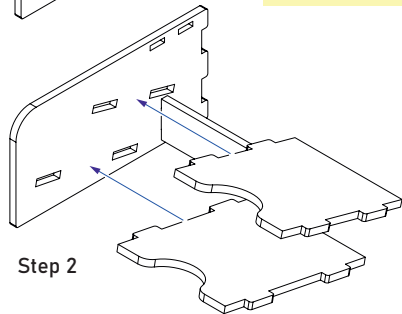


Intended for Solo and  
Competitor cards.

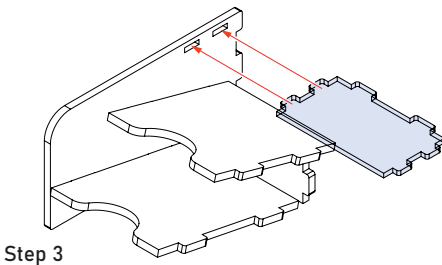
Sheet 4, Acrylic Sheet 4



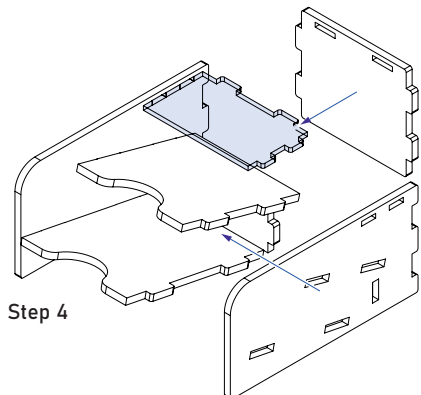
Step 1



Step 2



Step 3



Step 4

First of all, remove the protective plastic covering from both sides of the acrylic part. Before the final gluing, make sure the lid fits the tray.





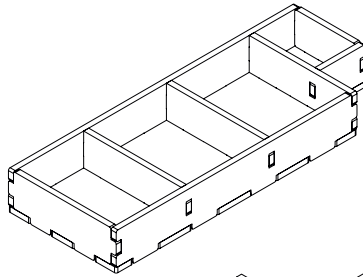
# ONE SMART BOX Lost Ruins of Arnak® Organizer

LRAOR01

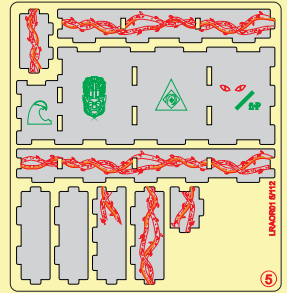
Compatible with Lost Ruins of Arnak® base game, Expedition Leaders Expansion,  
Solo Mini Expansions and All Promo Cards  
Assembly Guide

## Tile Tray

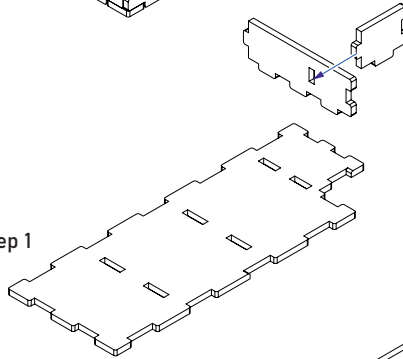
Intended for Blocking, Research  
Bonus, Reserve and Idol tiles.



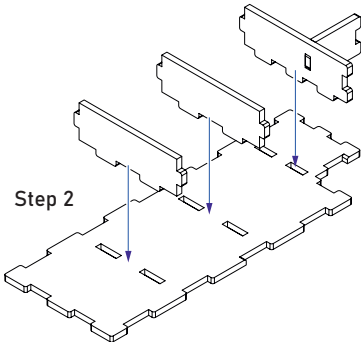
Sheet 5



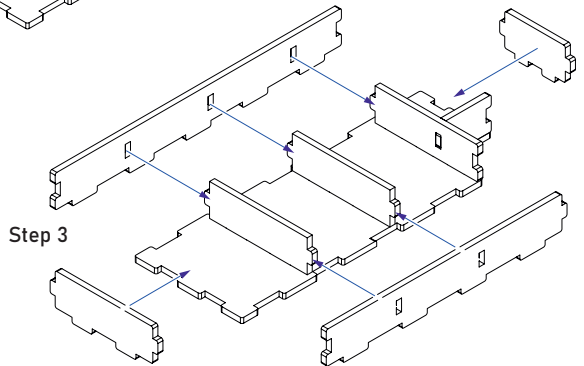
Step 1



Step 2



Step 3







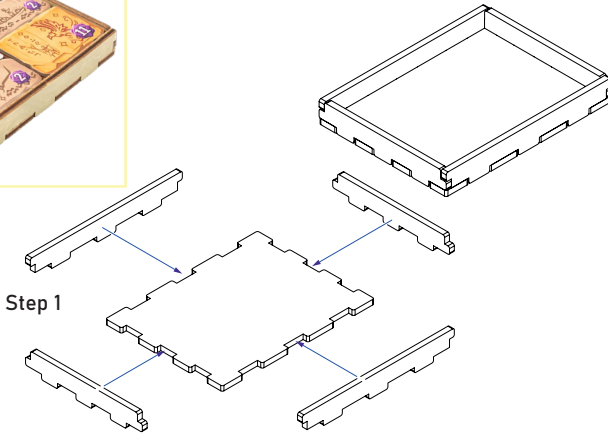
# ONE SMART BOX Lost Ruins of Arnak® Organizer

LRAOR01

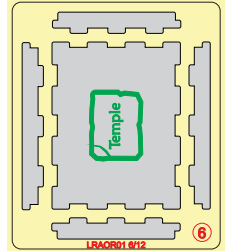
Compatible with Lost Ruins of Arnak® base game, Expedition Leaders Expansion,  
Solo Mini Expansions and All Promo Cards  
Assembly Guide

## Temple Tile Tray

Intended for Temple tiles.

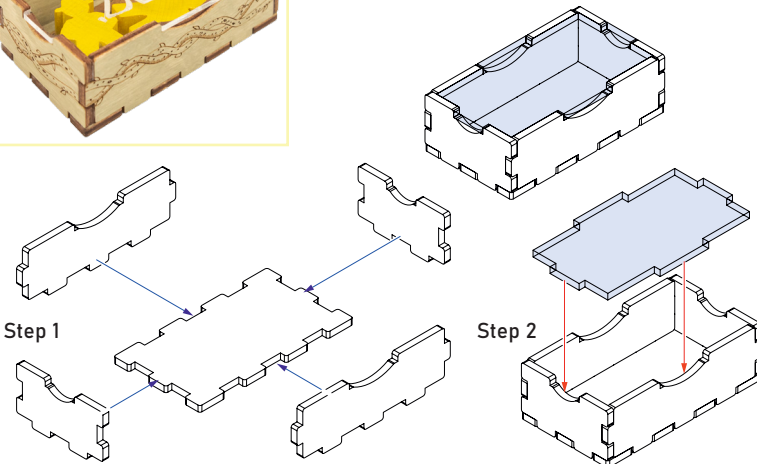


Sheet 6

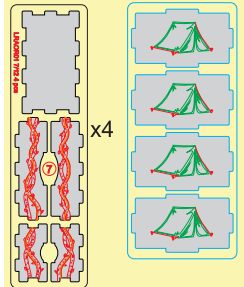


## Player Trays \*4

Intended for Notebook token,  
Magnifying glass token in each color,  
Tent tiles, and Archaeologist figures.



Sheets 7\*4,  
Acrylic Sheet 1



Until the glue has completely dried, make sure the lid fits the tray and can be easily removed. Put it back in its place on the tray. Only then carefully remove the protective covering.



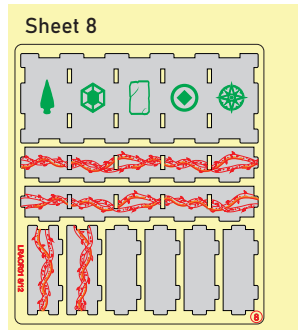
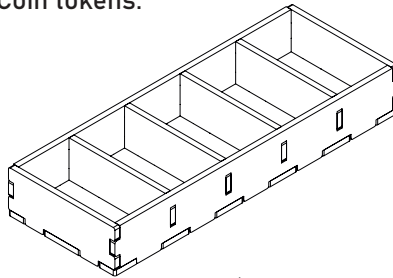
# ONE SMART BOX Lost Ruins of Arnak® Organizer

LRAOR01

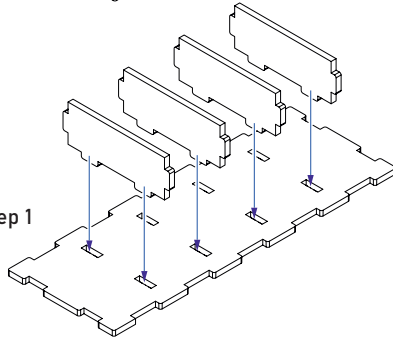
Compatible with Lost Ruins of Arnak® base game, Expedition Leaders Expansion,  
Solo Mini Expansions and All Promo Cards  
Assembly Guide

## Resource Tray

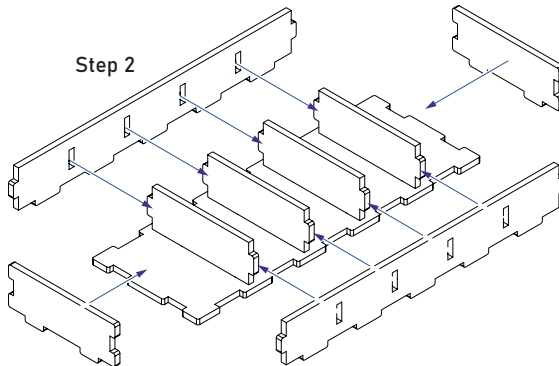
Intended for Arrowhead, Tablet, Jewel, Compass, and Coin tokens.



Step 1



Step 2





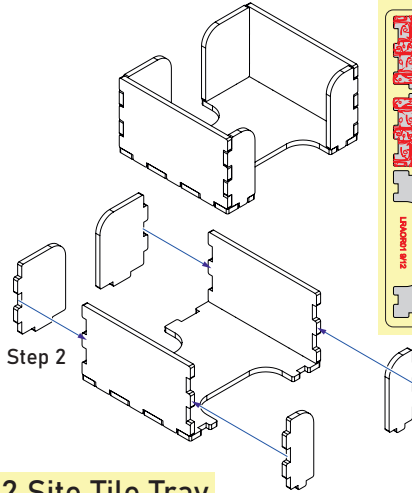
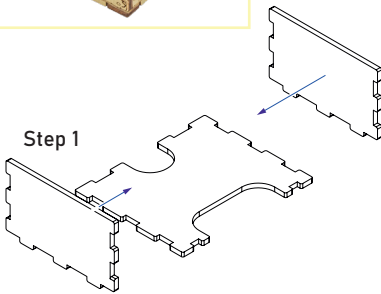
# ONE SMART BOX Lost Ruins of Arnak® Organizer

LRAOR01

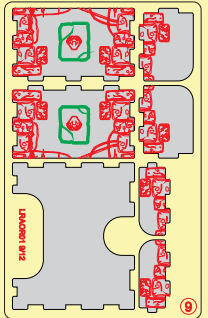
Compatible with Lost Ruins of Arnak® base game, Expedition Leaders Expansion,  
Solo Mini Expansions and All Promo Cards  
Assembly Guide

## Guardian Tray

Intended for Guardian tiles.

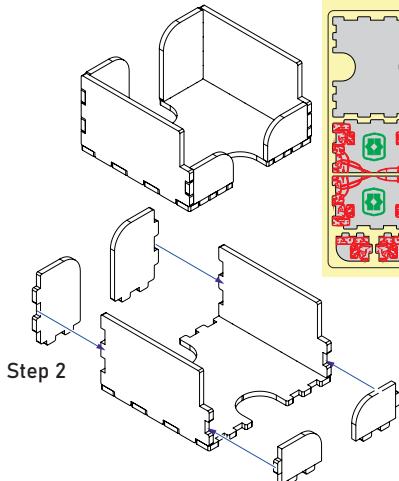
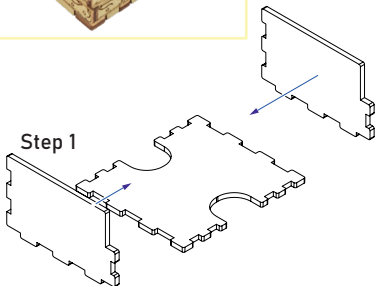


Sheet 9

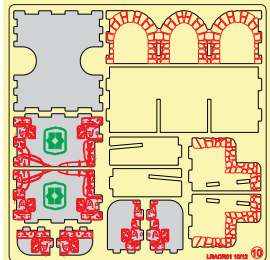


## Level 2 Site Tile Tray

Intended for Level 2 Site tiles.



Sheet 10





# ONE SMART BOX Lost Ruins of Arnak® Organizer

LRAOR01

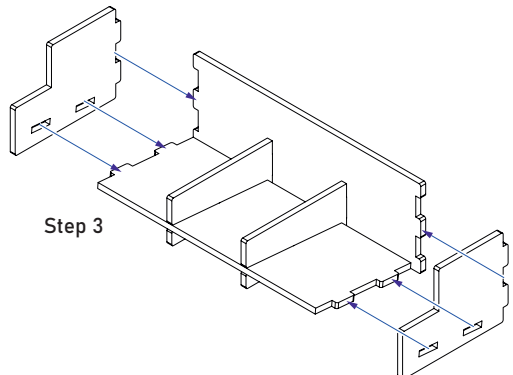
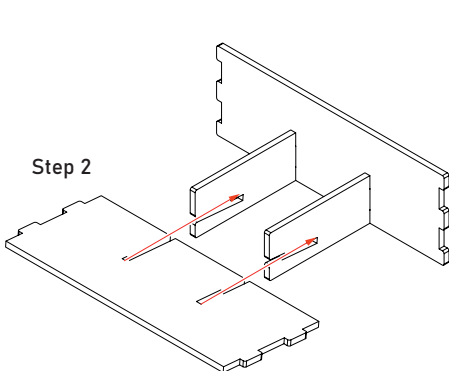
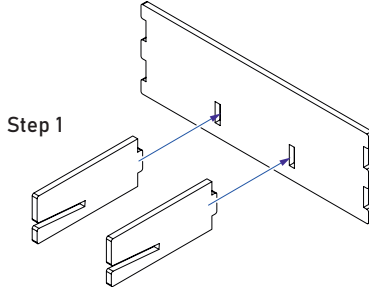
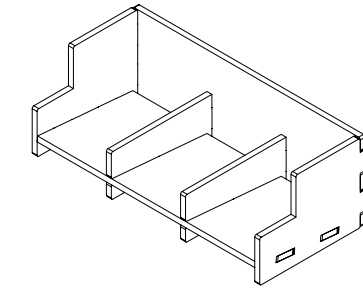
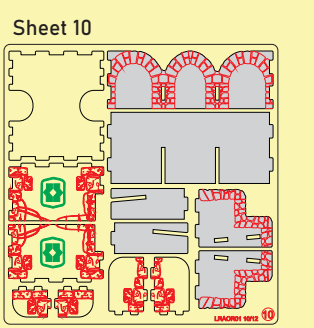
Compatible with Lost Ruins of Arnak® base game, Expedition Leaders Expansion,  
Solo Mini Expansions and All Promo Cards

## Assistant Tray

Intended for Assistant tiles.



Please mind that the engravings should be on the inside of the Assistant tray.





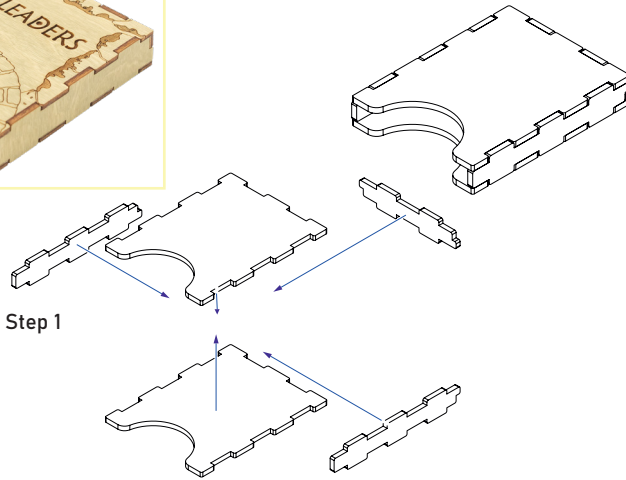
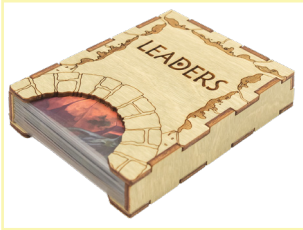
# ONE SMART BOX Lost Ruins of Arnak® Organizer

LRAOR01

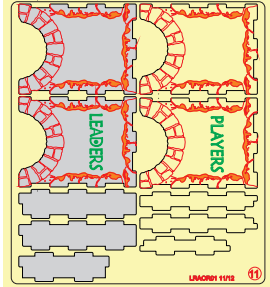
Compatible with Lost Ruins of Arnak® base game, Expedition Leaders Expansion,  
Solo Mini Expansions and All Promo Cards  
Assembly Guide

## Leader Cardholder

Intended for Leaders cards.

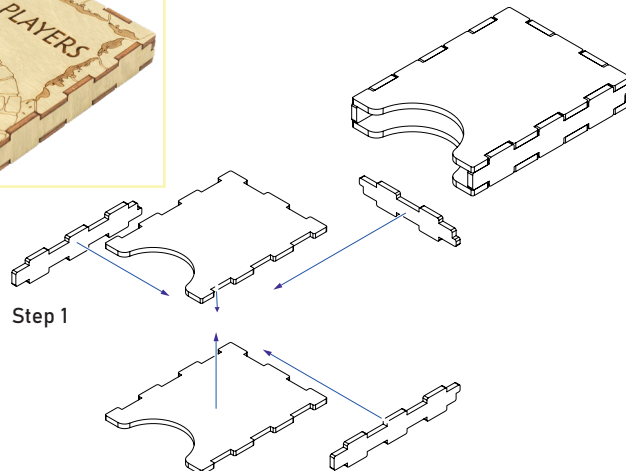
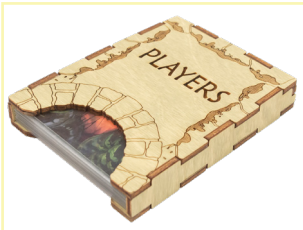


Sheet 11

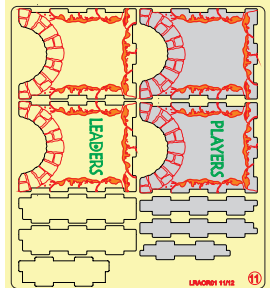


## Player Cardholder

Intended for Players cards.



Sheet 11





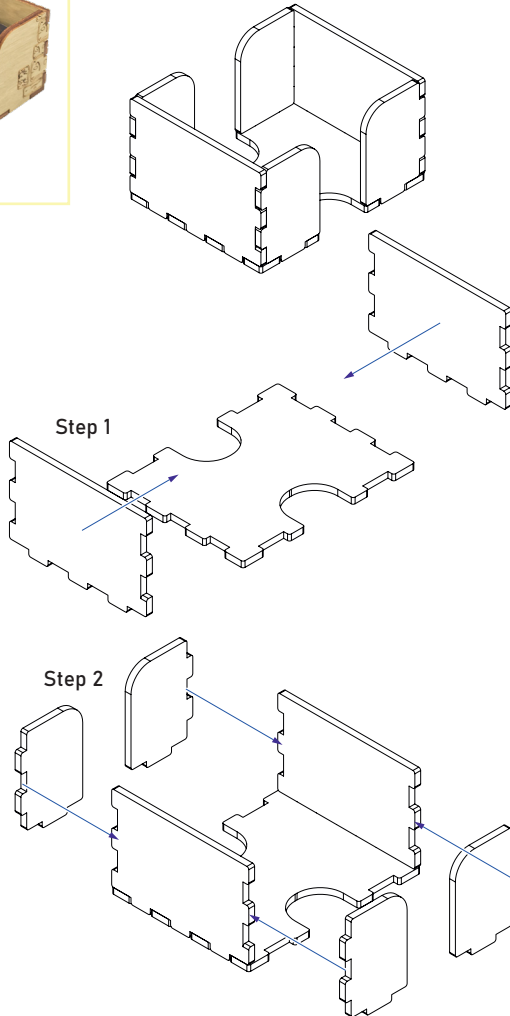
# ONE SMART BOX Lost Ruins of Arnak® Organizer

LRAOR01

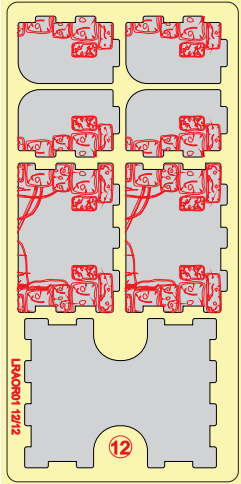
Compatible with Lost Ruins of Arnak® base game, Expedition Leaders Expansion,  
Solo Mini Expansions and All Promo Cards  
Assembly Guide

## Level 1 Site Tile Tray

Intended for Level 1 Site tiles.



Sheet 12









ONE SMART BOX

Welcome to <https://smonex.com>.

If something is damaged or broken, please do not return the whole set. Contact us directly on email [info@smonex.com](mailto:info@smonex.com) or our website [smonex.com](https://smonex.com).

Any questions or issues with the Smonex products, we'll do our best to help you. Your satisfaction of it is our top priority.

Thanks for choosing Smonex product. We would be grateful for your feedback, which inspires us and helps to develop further. We'll gladly help you on any matter if you contact us on [info@smonex.com](mailto:info@smonex.com).

Share your photos with **#smonex** and follow us for all the updates:



<https://www.facebook.com/Smonexcom>

[https://www.instagram.com/smonex\\_com/](https://www.instagram.com/smonex_com/)

[https://twitter.com/Smonex\\_com](https://twitter.com/Smonex_com)

[https://www.pinterest.com/smonex/\\_shop/](https://www.pinterest.com/smonex/_shop/)

<https://www.youtube.com/c/SmonexSmartOneBox>



Scan QR-code to visit or follow Smonex.