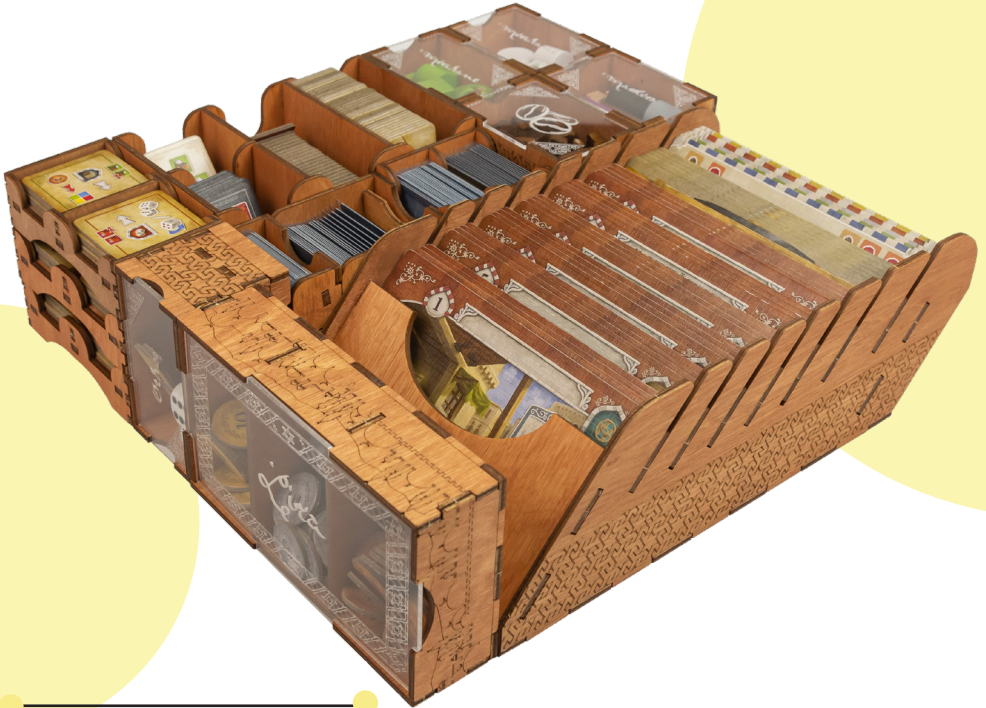




ONE SMART BOX Istanbul® Organizer

ILOR01

Compatible with Istanbul® board game with Mocha and Baksheesh,
Letters & Seals and Mini Expansions
Assembly Guide



<https://smonex.com>

NOT A CHILDREN TOY
AGE 14+

Created for:

- Istanbul Base Game
- Istanbul: Mocha and Baksheesh
- Istanbul: Letters & Seals
- Istanbul Mini Expansions

Istanbul® is a registered trademark of Pegasus Spiele. Any mention of Istanbul® is for reference purposes only. ALL RIGHTS RESERVED by their respective trademark holders. No challenge to any intellectual property rights is intended or implied by representations of compatibility and no endorsements of any of our products by any other company is implied or represented.



ONE SMART BOX Istanbul® Organizer

ILOR01

Compatible with Istanbul® board game with Mocha and Baksheesh,
Letters & Seals and Mini Expansions
Assembly Guide

Tips and tricks

- To assemble each tray you need a wood glue for extra strength. (We recommend Titebond 2 Wood Glue or Beacon 527).
- Please make sure you assembled each tray correctly before gluing it together.
- Use stationery knife to cut the bits that connect details to the frame.
- Remove the details from the frame with a rotational motion along the axis formed by the bits you just cut.
- Use stationery knife and sandpaper to remove all the remaining connection bits.
- Please note that the engraving must be on the outside of the boxes.
- You may fix the box with rubber bands after gluing it. This will save you time and simplify the assembly.
- Make sure to remove the protective covering from BOTH sides of the acrylic pieces. Use a hairdryer for easier removal of it if necessary. Just heat the acrylic surface a little to remove the covering much easier!
- Leave your finished insert overnight to dry completely.

Assembly Supplies



Wood-glue



Stationery knife



Hammer



Cotton swab



Rubber bands



Hairdryer

If something is damaged or broken, please do not return the whole set. Contact us directly on email info@smonex.com or our website smonex.com. Any questions or issues with the Smonex products, we'll do our best to help you. We want our customers to be completely satisfied.

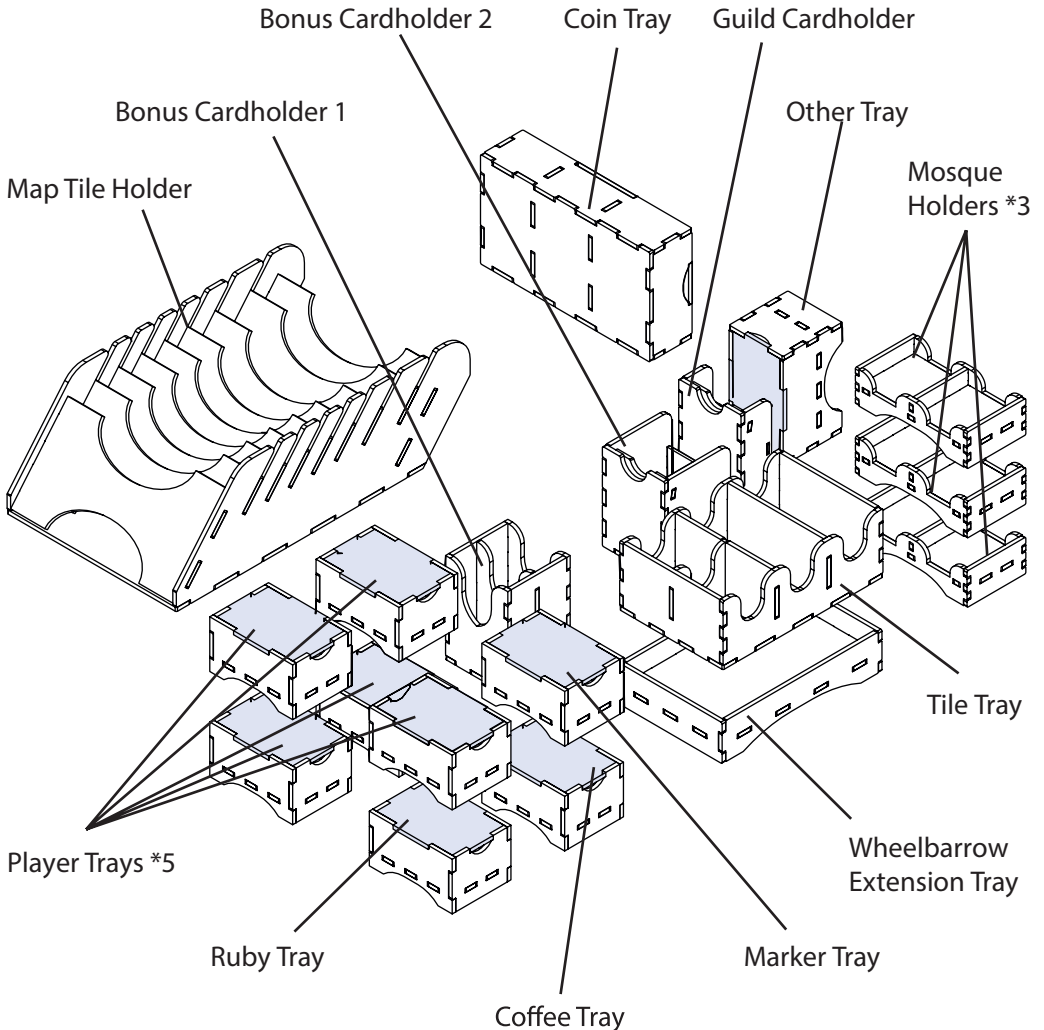
IMPORTANT: Assemble each tray one by one. Please DO NOT take out all the parts from the sheets and mix them. Even though some parts look similar, they are not interchangeable.



ONE SMART BOX Istanbul® Organizer

ILOR01

Compatible with Istanbul® board game with Mocha and Baksheesh,
Letters & Seals and Mini Expansions
Assembly Guide





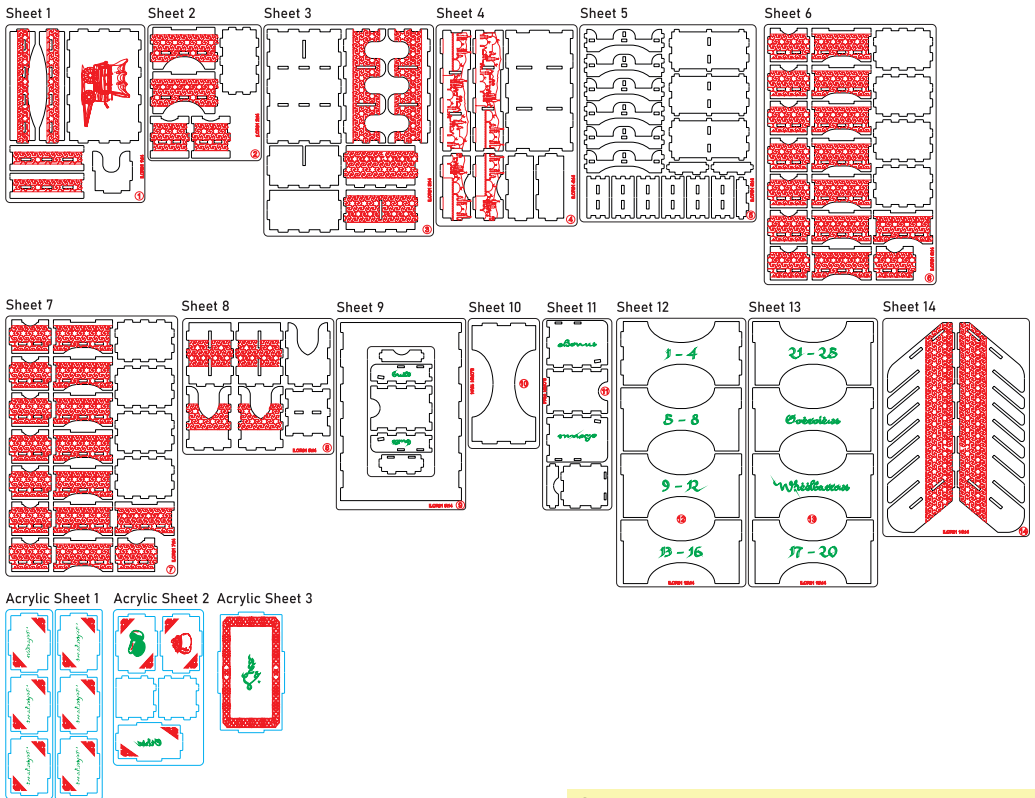
ONE SMART BOX Istanbul® Organizer

ILOR01

Compatible with Istanbul® board game with Mocha and Baksheesh,
Letters & Seals and Mini Expansions
Assembly Guide

Brief assembly instructions:

1. Unpack and arrange the sheets in order.
2. Compare details on the sheets with details in the pictures of the guide.
3. Study the pictures of unassembled product.
4. Start your assembly, taking the necessary parts out of the sheets in a certain order.



Components:

- 14 sheets extrusion molds
- 3 acrylic sheets extrusion mold
- 1 sandpaper for stripping parts
- Assembly guide

Legend:

- Details to be extruded
- Details not used in this assembly
- Details to be glued
- Details to be connected without glue

This is a non-licensed product. ALL RIGHTS RESERVED by their respective trademark holders. No challenge to any intellectual property rights is intended or implied by representations of compatibility and no endorsements of any of our products by any other company is implied or represented.



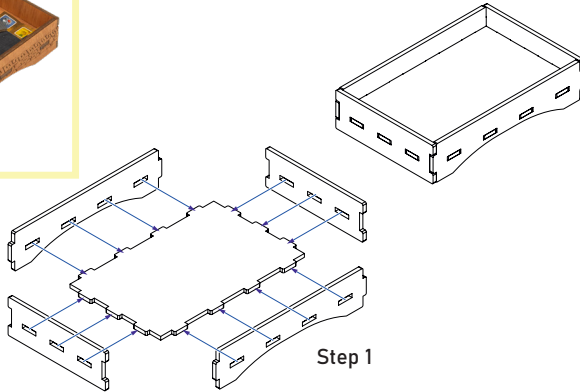
ONE SMART BOX Istanbul® Organizer

ILOR01

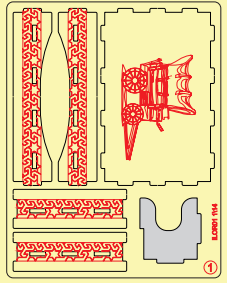
Compatible with Istanbul® board game with Mocha and Baksheesh,
Letters & Seals and Mini Expansions
Assembly Guide

Wheelbarrow Extension Tray

Intended for Wheelbarrow extensions.

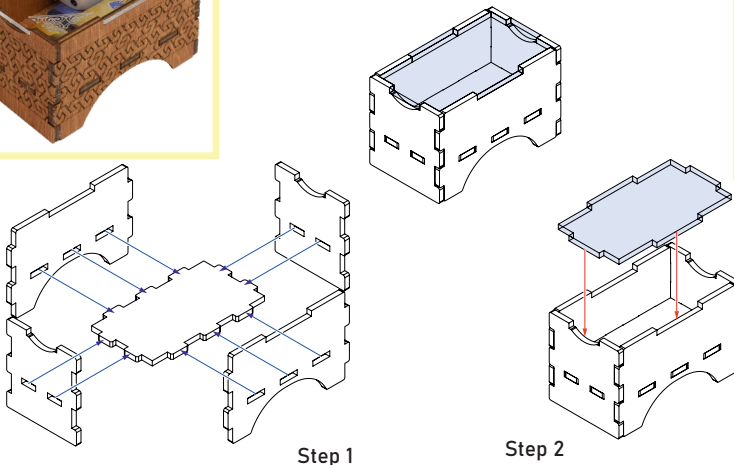


Sheet 1

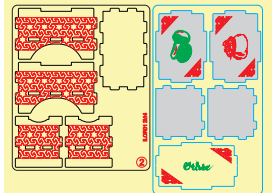


Other Tray

Intended for Corresponding, Baksheesh
and Caravan tiles, Starting player marker
and dice.



Sheet 2,
Acrylic Sheet 2



Until the glue has completely dried, make sure the lid fits the tray and can be easily removed. Put it back in its place on the tray. Only then carefully remove the protective covering.



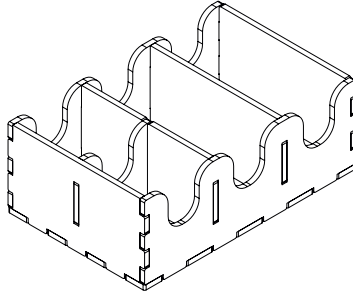
ONE SMART BOX Istanbul® Organizer

ILOR01

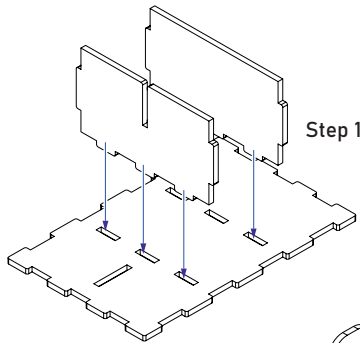
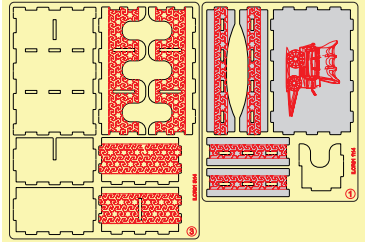
Compatible with Istanbul® board game with Mocha and Baksheesh,
Letters & Seals and Mini Expansions
Assembly Guide

Tile Tray

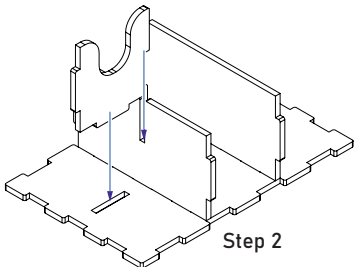
Intended for Kiosk, Letter and Demand tiles.



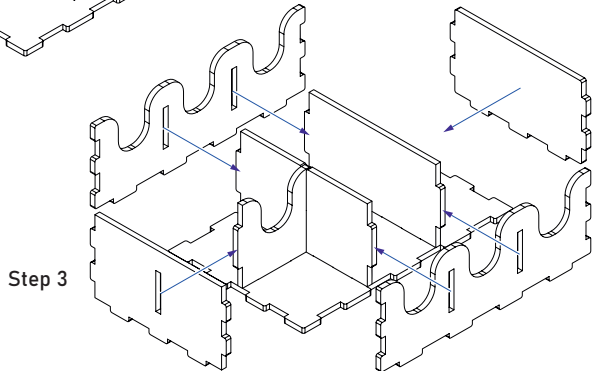
Sheets 1, 3



Step 1



Step 2



Step 3



ONE SMART BOX Istanbul® Organizer

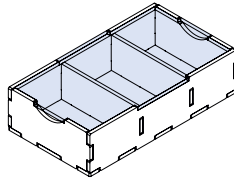
ILOR01

Compatible with Istanbul® board game with Mocha and Baksheesh,
Letters & Seals and Mini Expansions
Assembly Guide

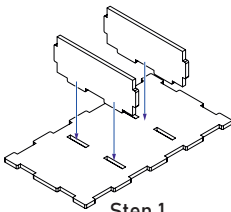
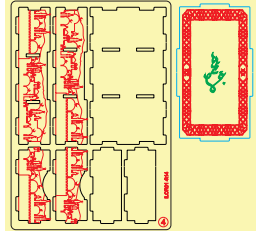
Coin Tray



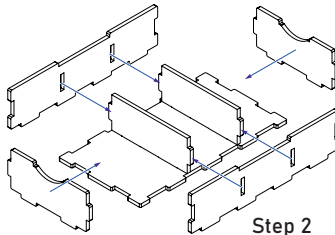
Intended for coins.



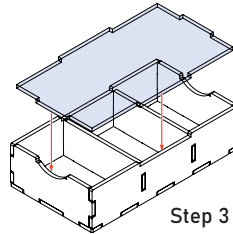
Sheet 4, Acrylic Sheet 3



Step 1



Step 2



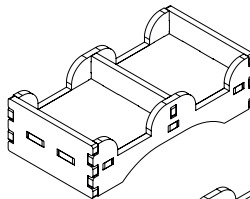
Step 3

Until the glue has completely dried, make sure the lid fits the tray and can be easily removed. Put it back in its place on the tray. Only then carefully remove the protective covering.

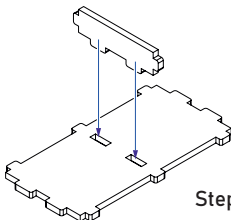
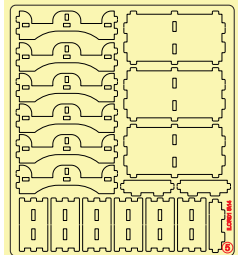
Mosque Holders *3



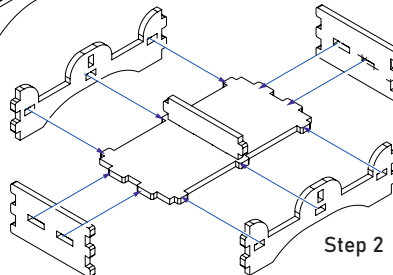
Intended for Mosque tiles.



Sheet 5



Step 1



Step 2



ONE SMART BOX Istanbul® Organizer

ILOR01

Compatible with Istanbul® board game with Mocha and Baksheesh,
Letters & Seals and Mini Expansions
Assembly Guide

Player Trays *5, Ruby Tray, Coffee Tray, Marker Tray



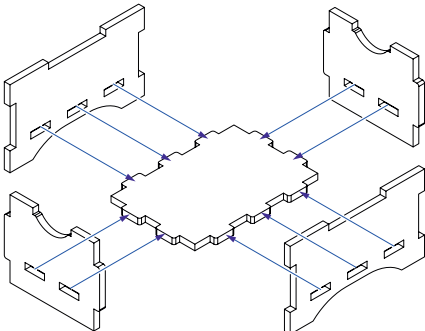
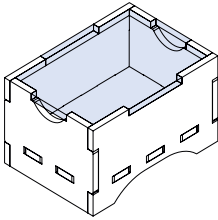
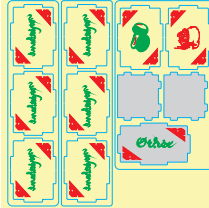
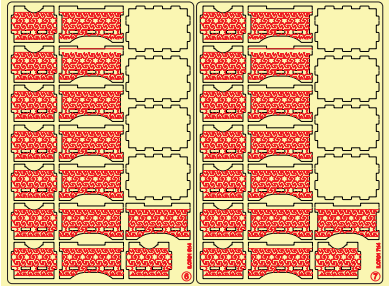
Player Trays *5: Intended for Goods, Assistants, Merchant, Family and Companions.

Ruby Tray: Intended for Rubies.

Coffee Tray: Intended for Bags of Coffee.

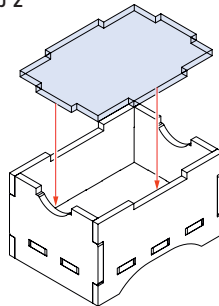
Marker Tray: Intended for Governor, Smuggler, Coffee trader, Mail indicators, Barrier and Courier.

Sheets 6, 7,
Acrylic Sheets 1,2



Step 1

Step 2



Until the glue has completely dried, make sure the lid fits the tray and can be easily removed. Put it back in its place on the tray. Only then carefully remove the covering.



ONE SMART BOX Istanbul® Organizer

ILOR01

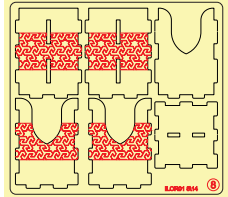
Compatible with Istanbul® board game with Mocha and Baksheesh,
Letters & Seals and Mini Expansions
Assembly Guide

Bonus Cardholder 1

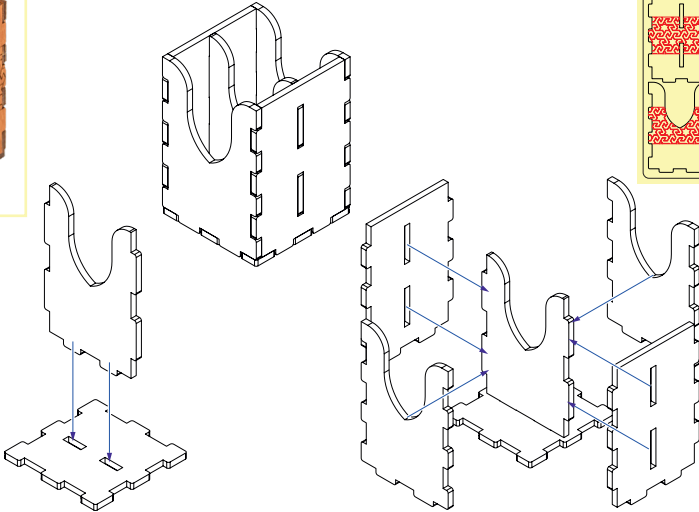
Intended for Bonus cards from expansions.



Sheet 8



Step 1



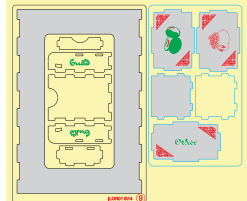
Step 2

Bonus Cardholder 2

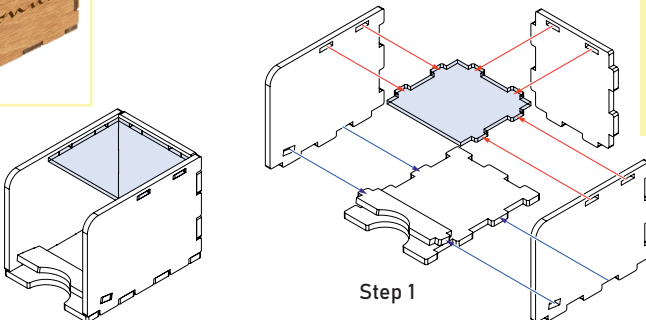
Intended for Bonus cards from the base game.



Sheet 9,
Acrylic Sheet 2



Step 1





ONE SMART BOX Istanbul® Organizer

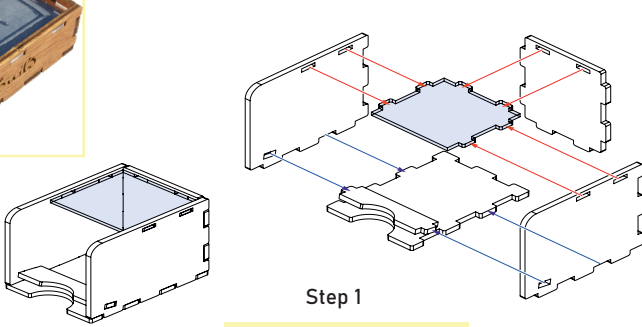
ILOR01

Compatible with Istanbul® board game with Mocha and Baksheesh,
Letters & Seals and Mini Expansions
Assembly Guide

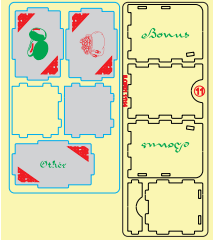
Guild Cardholder



Intended for Guild cards.



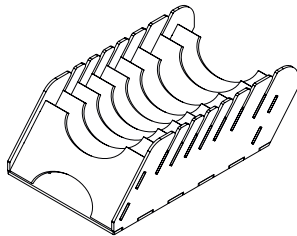
Sheet 11,
Acrylic Sheet 2



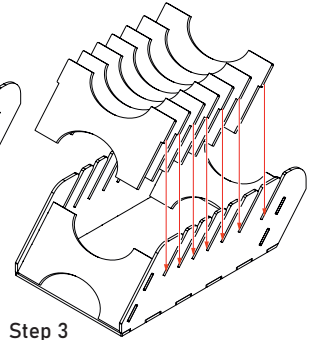
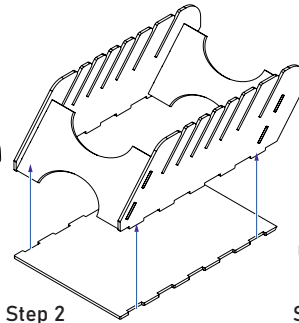
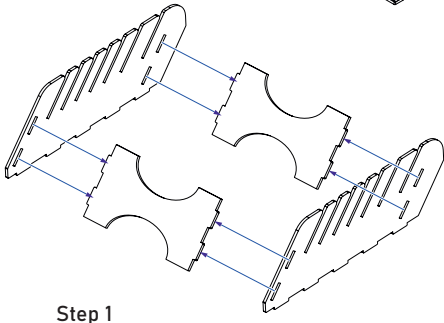
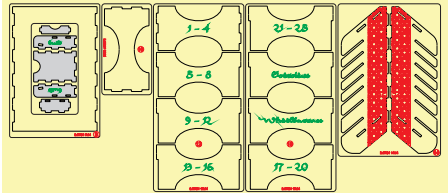
Map Tile Holder



Intended for Map tiles.



Sheets 9, 10, 12, 13, 14





ONE SMART BOX

Some other SMONEX products:
Gaia Project® Organizer GPOR01



Lords of Waterdeep® Organizer LWDOR01





ONE SMART BOX

Welcome to <https://smonex.com>.

If something is damaged or broken, please do not return the whole set. Contact us directly on email info@smonex.com or our website smonex.com.

Any questions or issues with the Smonex products, we'll do our best to help you. Your satisfaction of it is our top priority.

Thanks for choosing Smonex product. We would be grateful for your feedback, which inspires us and helps to develop further. We'll gladly help you on any matter if you contact us on info@smonex.com.

Share your photos with **#smonex** and follow us for all the updates:



<https://www.facebook.com/Smonexcom>

https://www.instagram.com/smonex_com/

https://twitter.com/Smonex_com

https://www.pinterest.com/smonex/_shop/

<https://www.youtube.com/c/SmonexSmartOneBox>



Scan QR-code to visit or follow Smonex.