



ONE SMART BOX Dune® Board Game Organizer

DEOR01
Compatible with Dune® (2019)
board game with Ixians & Tleilaxu expansion
Assembly Guide



<https://smonex.com>

NOT A CHILDREN TOY
AGE 14+

Created for:

- Dune Base Game
- Dune: Ixians & Tleilaxu

Dune® is a registered trademark of Gale Force Nine, LLC. Any mention of Dune® is for reference purposes only. ALL RIGHTS RESERVED by their respective trademark holders. No challenge to any intellectual property rights is intended or implied by representations of compatibility and no endorsements of any of our products by any other company is implied or represented.



ONE SMART BOX Dune® Board Game Organizer

DEOR01

Compatible with Dune® (2019)
board game with Ixians & Tleilaxu expansion
Assembly Guide

Tips and tricks

- To assemble each tray you need a wood glue for extra strength. (We recommend Titebond 2 Wood Glue or Beacon 527).
- Please make sure you assembled each tray correctly before gluing it together.
- Use stationery knife to cut the bits that connect details to the frame.
- Remove the details from the frame with a rotational motion along the axis formed by the bits you just cut.
- Use stationery knife and sandpaper to remove all the remaining connection bits.
- Please note that the engraving must be on the outside of the boxes.
- You may fix the box with rubber bands after gluing it. This will save you time and simplify the assembly.
- Make sure to remove the protective covering from BOTH sides of the acrylic pieces. Use a hairdryer for easier removal of it if necessary. Just heat the acrylic surface a little to remove the covering much easier!
- Leave your finished insert overnight to dry completely.

Assembly Supplies



Wood-glue



Stationery knife



Hammer



Cotton swab



Rubber bands



Hairdryer

If something is damaged or broken, please do not return the whole set. Contact us directly on email info@smonex.com or our website smonex.com. Any questions or issues with the Smonex products, we'll do our best to help you. We want our customers to be completely satisfied.

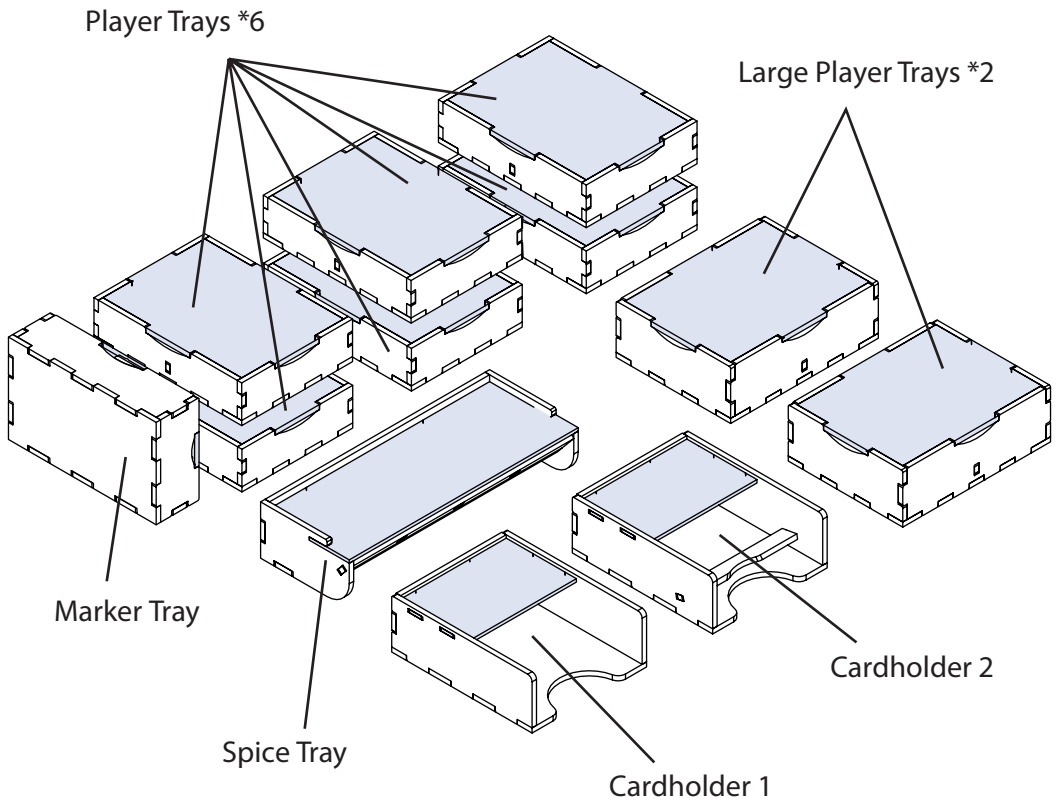
IMPORTANT: Assemble each tray one by one. Please DO NOT take out all the parts from the sheets and mix them. Even though some parts look similar, they are not interchangeable.



ONE SMART BOX Dune® Board Game Organizer

DEOR01

Compatible with Dune® (2019)
board game with Ixians & Tleilaxu expansion
Assembly Guide





ONE SMART BOX

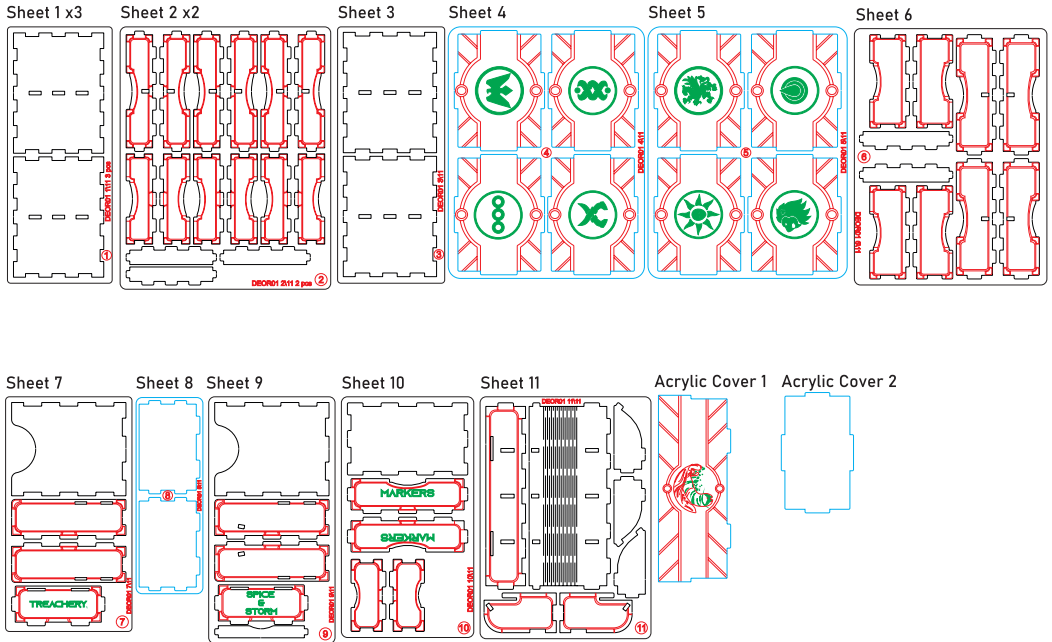
Dune® Board Game Organizer

DEOR01

Compatible with Dune® (2019)
board game with Ixians & Tleilaxu expansion
Assembly Guide

Brief assembly instructions:

1. Unpack and arrange the sheets in order.
2. Compare details on the sheets with details in the pictures of the guide.
3. Study the pictures of unassembled product.
4. Start your assembly, taking the necessary parts out of the sheets in a certain order.



Legend:

- Details to be extruded
- Details not used in this assembly
- Details to be glued
- Details to be connected without glue

Components:

- 11 sheets extrusion molds
- 3 acrylic sheets extrusion mold
- 2 acrylic covers
- 1 sandpaper for stripping parts
- Assembly guide



ONE SMART BOX Dune® Board Game Organizer

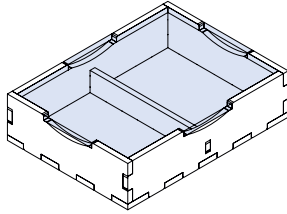
DEOR01

Compatible with Dune® (2019)
board game with Ixians & Tleilaxu expansion
Assembly Guide

Player Trays *6

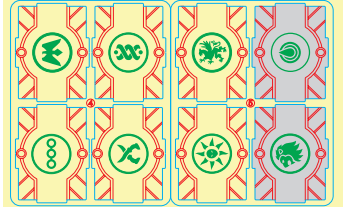
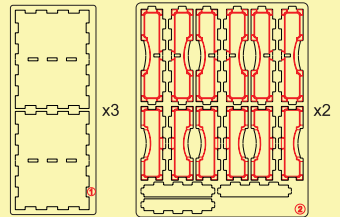


Intended for Leaders,
5 Traitors cards, Alliance cards,
Forces tokens.



You can choose the play-
er boxes where to store
the Quick Reference
cards yourself.

Sheets 1x3, 2x2, 4, 5



Spacing Guild

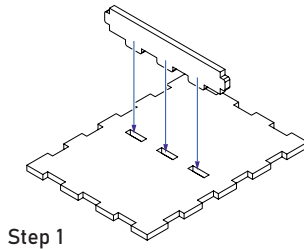
Fremen

Tleilaxu

Atreides

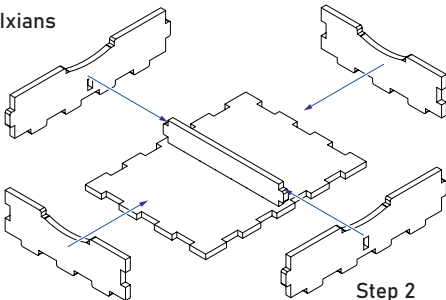
Harkonnen

Ixians

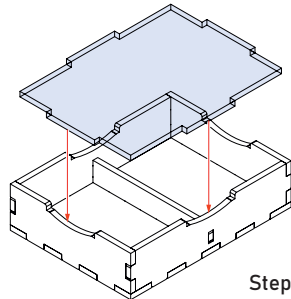


Step 1

Until the glue has completely
dried, make sure the lid fits the
tray and can be easily removed.
Put it back in its place on the tray.
Only then carefully remove the
protective covering.



Step 2



Step 3



ONE SMART BOX Dune® Board Game Organizer

DEOR01

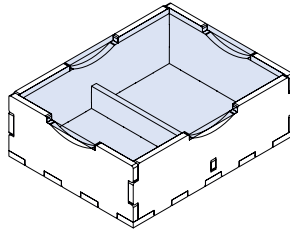
Compatible with Dune® (2019)
board game with Ixians & Tleilaxu expansion
Assembly Guide

Large Player Trays *2

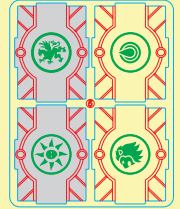
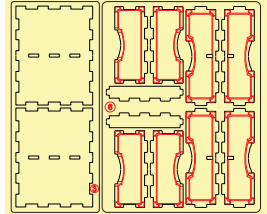


Intended for Leaders,
5 Traitors cards, Alliance cards,
Forces tokens.

You can choose the play-
er boxes where to store
the Quick Reference
cards yourself.



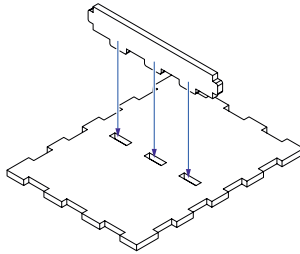
Sheets 3, 5, 6



Bene Gassett

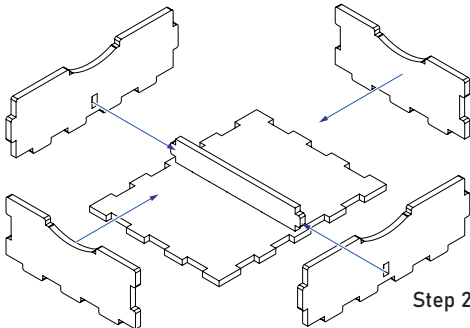


Emperor

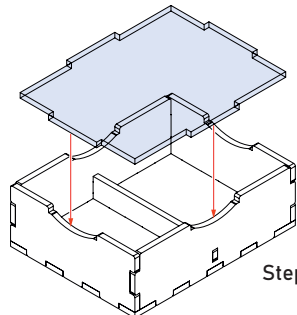


Step 1

Until the glue has completely
dried, make sure the lid fits the
tray and can be easily removed.
Put it back in its place on the tray.
Only then carefully remove the
protective covering.



Step 2



Step 3



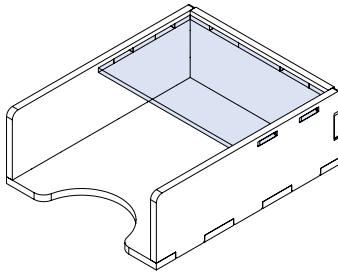
ONE SMART BOX Dune® Board Game Organizer

DEOR01

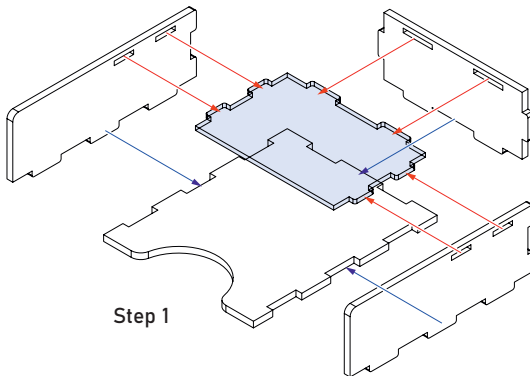
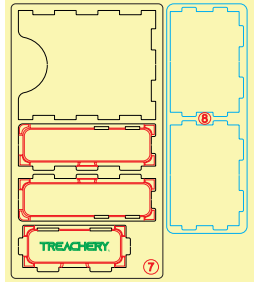
Compatible with Dune® (2019)
board game with Ixians & Tleilaxu expansion
Assembly Guide

Cardholder 1

Intended for Treachery cards.



Sheets 7, 8



Step 1

Until the glue has completely dried, make sure the lid fits the tray and can be easily removed. Put it back in its place on the tray. Only then carefully remove the protective covering.



ONE SMART BOX

Dune® Board Game Organizer

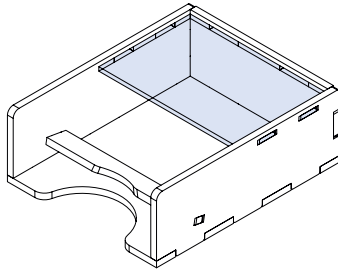
DEOR01

Compatible with Dune® (2019)
board game with Ixians & Tleilaxu expansion
Assembly Guide

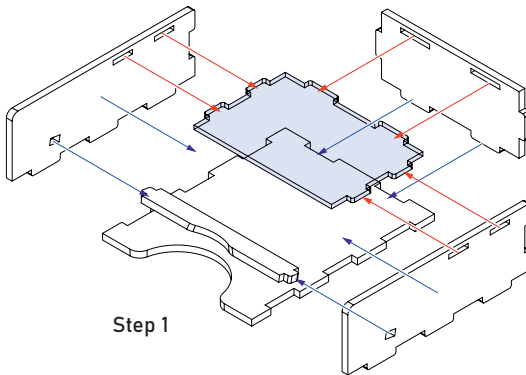
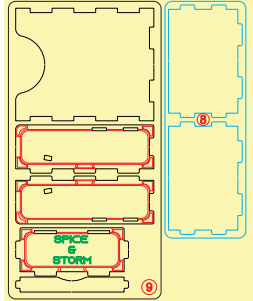
Cardholder 2



Intended for Spice and Storm cards.



Sheets 9, 8



Step 1

Until the glue has completely dried, make sure the lid fits the tray and can be easily removed. Put it back in its place on the tray. Only then carefully remove the protective covering.



ONE SMART BOX

Dune® Board Game Organizer

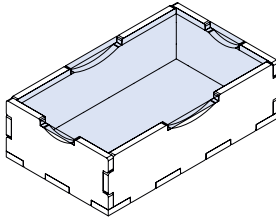
DEOR01

Compatible with Dune® (2019)
board game with Ixians & Tleilaxu expansion
Assembly Guide

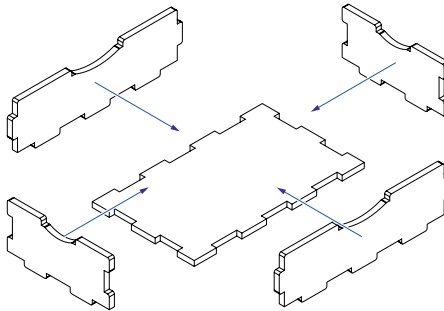
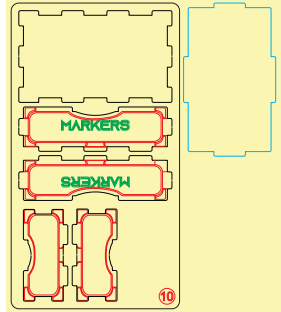
Marker Tray



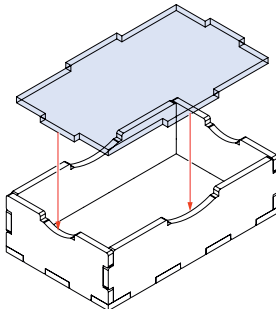
Intended for Storm marker, Game Turn counter, Tech tokens, Sandworm token, Kwisatz Haderach counter tokens and Mobile Stronghold.



Sheet 10,
Acrylic Cover 2



Step 1



Step 2

Until the glue has completely dried, make sure the lid fits the tray and can be easily removed. Put it back in its place on the tray. Only then carefully remove the protective covering.



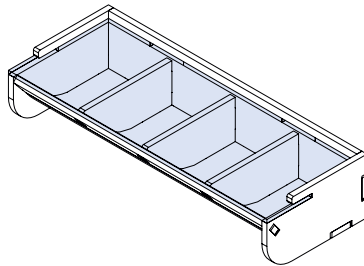
ONE SMART BOX Dune® Board Game Organizer

DEOR01

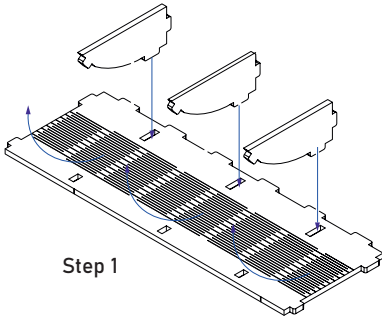
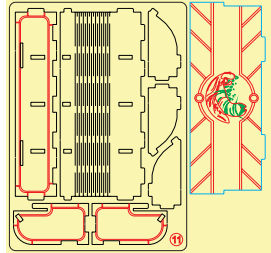
Compatible with Dune® (2019)
board game with Ixians & Tleilaxu expansion
Assembly Guide

Spice Tray

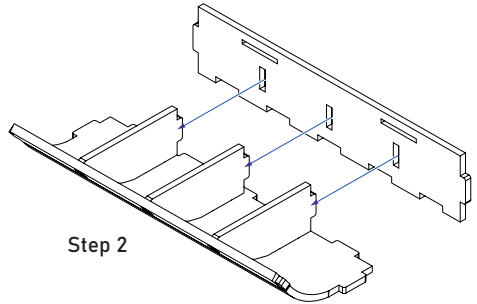
Intended for Spice tokens.



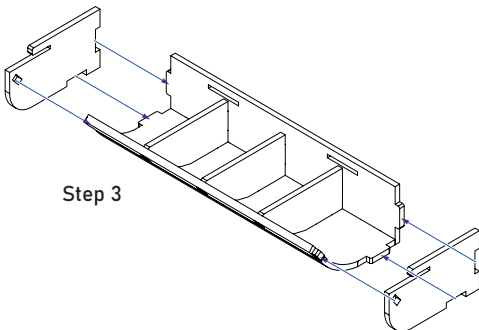
Sheet 11, Acrylic Cover 1



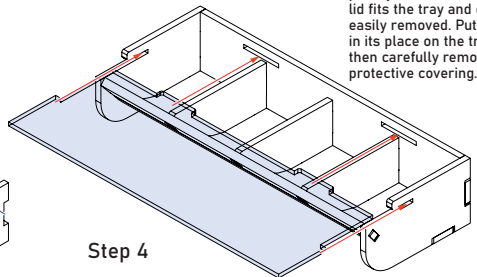
Step 1



Step 2



Step 3



Step 4

Until the glue has completely dried, make sure the lid fits the tray and can be easily removed. Put it back in its place on the tray. Only then carefully remove the protective covering.



ONE SMART BOX

Some other SMONEX products:
Gaia Project® Organizer GPOR01



Cyclades® Organizer CYSOR01





ONE SMART BOX

Welcome to <https://smonex.com>.

If something is damaged or broken, please do not return the whole set. Contact us directly on email info@smonex.com or our website smonex.com.

Any questions or issues with the Smonex products, we'll do our best to help you. Your satisfaction of it is our top priority.

Thanks for choosing Smonex product. We would be grateful for your feedback, which inspires us and helps to develop further. We'll gladly help you on any matter if you contact us on info@smonex.com.

Share your photos with **#smonex** and follow us for all the updates:



<https://www.facebook.com/Smonexcom>

https://www.instagram.com/smonex_com/

https://twitter.com/Smonex_com

https://www.pinterest.com/smonex/_shop/

<https://www.youtube.com/c/SmonexSmartOneBox>



Scan QR-code to visit or follow Smonex.