



GSD

GEORGE SPENCER DESIGNS

The  
ALTER EGO  
Collection



# The ALTER EGO Collection

With an air of mystery and mystique, the new Alter Ego collection of cut velvets from George Spencer Designs features two playfully paradoxical designs, punctuated with one regal stripe. The collection captures a metaphorical dance between two conflicting design personalities and draws on the notion of the hidden 'other'.

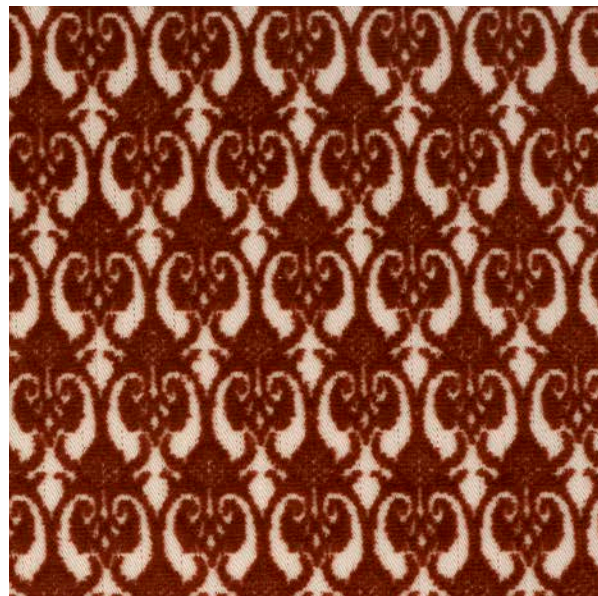
Theatrical, versatile, and highly eclectic, the range has a quirky sense of life and personality that brings a touch of opulence and grandeur to interiors.



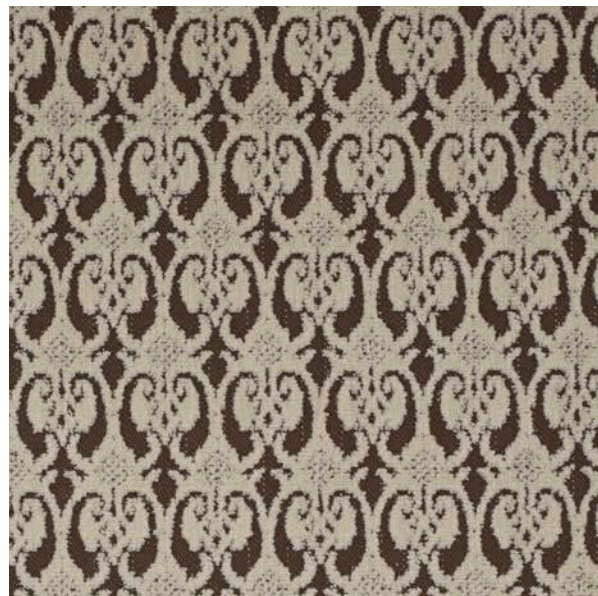
# Queen of Spades

Taken from Gainsborough's extensive archive, 'Queen of Spades' is a classic fabric, woven using traditional manufacturing methods.

<b>COMPOSITION</b>	100% Cotton
<b>PATTERN REPEAT</b>	Vertical 34cm Horizontal 7cm
<b>MINIMUM ORDER</b>	1m
<b>WIDTH</b>	136cm
<b>USE</b>	Upholstery & Curtains
<b>COLOURS</b>	6



**PERSIMMON**  
3006F-03



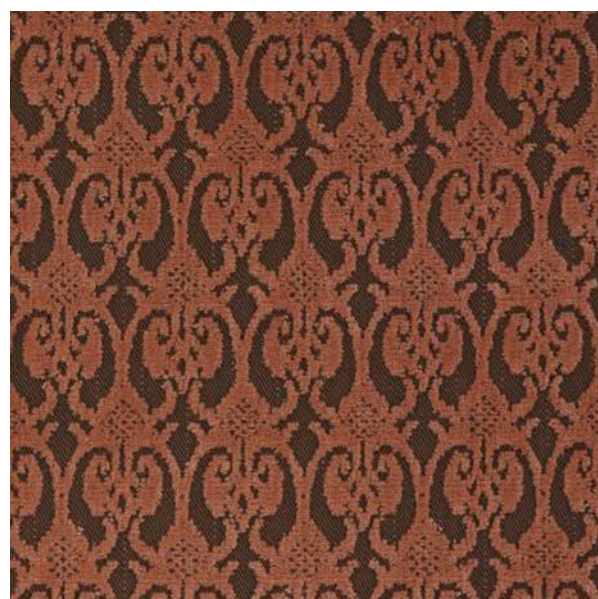
**ALABASTER**  
3006F-05



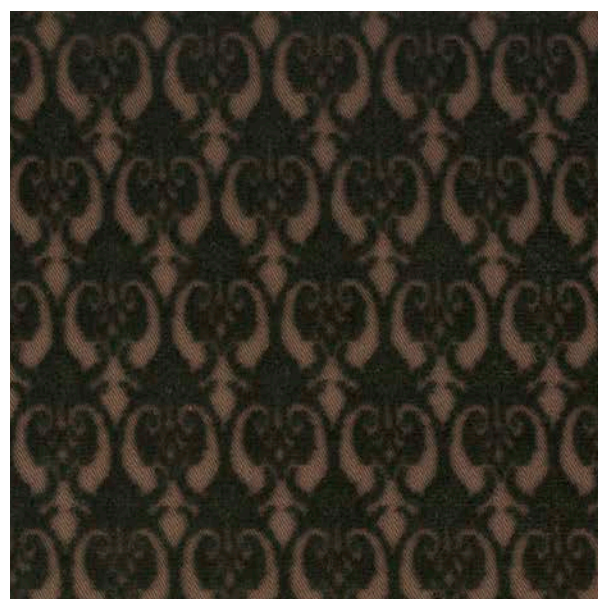
**OLIVE**  
3006F-02



**INDIGO**  
3006F-01



**BLUSH**  
3006F-06



**EVERGREEN**  
3006F-04



# Hokey Cokey

Forming the foundation of the collection, 'Hokey Cokey' is a handsome stripe, which brings regal elegance to interiors.

**COMPOSITION** 83% Cotton, 9% Cupro, 8% Viscose

**PATTERN REPEAT** -

**MINIMUM ORDER** 1m

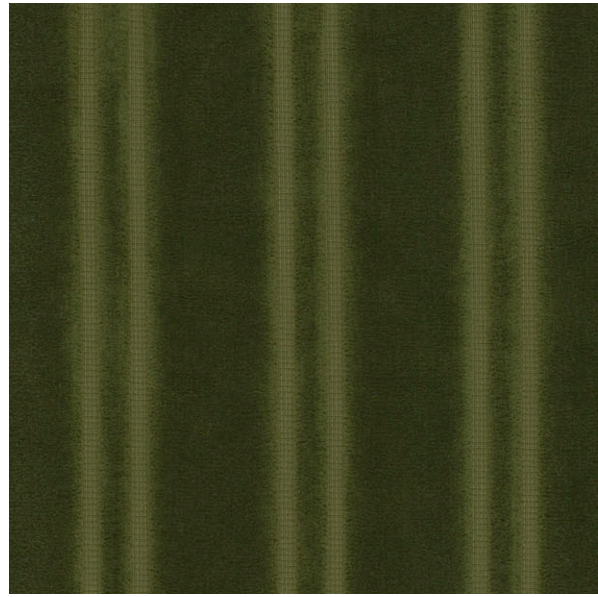
**WIDTH** 140cm

**USE** Upholstery & Curtains

**COLOURS** 8



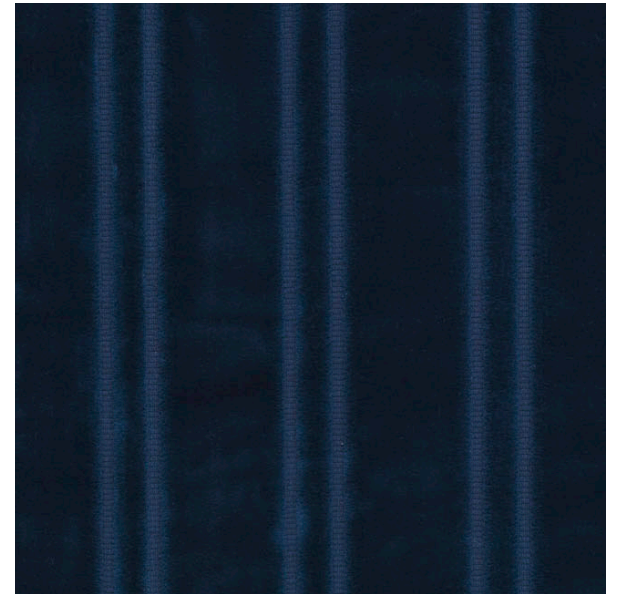
**WHEAT**  
3008F-01



**CLOVER**  
3008F-04



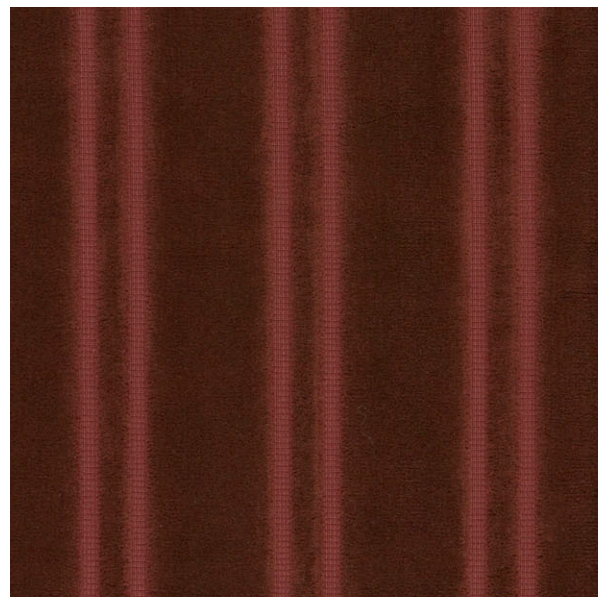
**ARCTIC**  
3008F-02



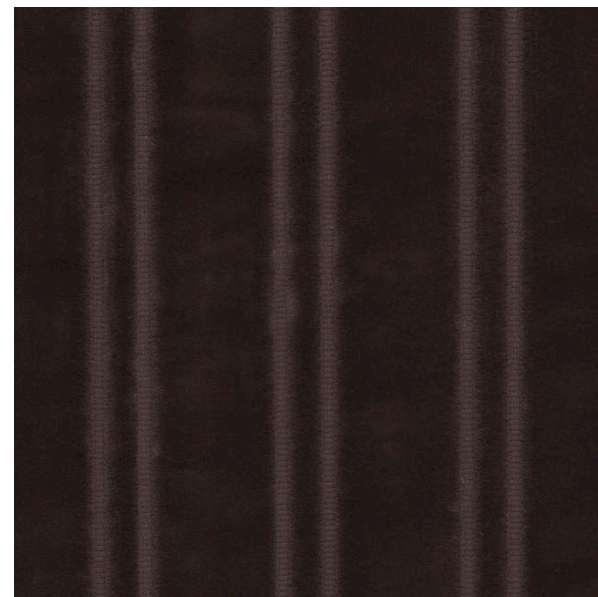
**AZURE**  
3008F-08



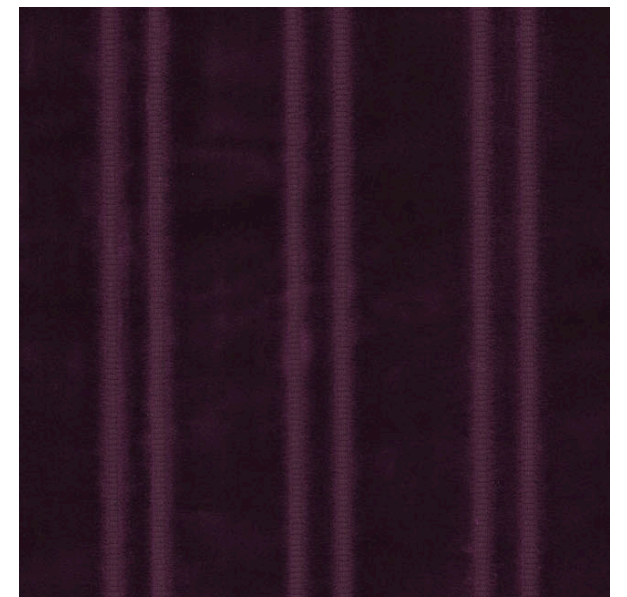
**FLINT**  
3008F-03



**CEDAR**  
3008F-05



**TRUFFLE**  
3008F-06



**DAMSON**  
3008F-07



# Chess

A contemporary, abstract design featuring a patchwork pattern of irregularly sized geometric shapes. Piece dyed, the fabric has a reflective quality, which when exposed to light, creates interesting colour variations from shape to shape.

**COMPOSITION** 66% Cotton, 8% Cupro, 26% Viscose

**PATTERN REPEAT** 98cm

**MINIMUM ORDER** 1m

**WIDTH** 140cm

**USE** Upholstery & Curtains

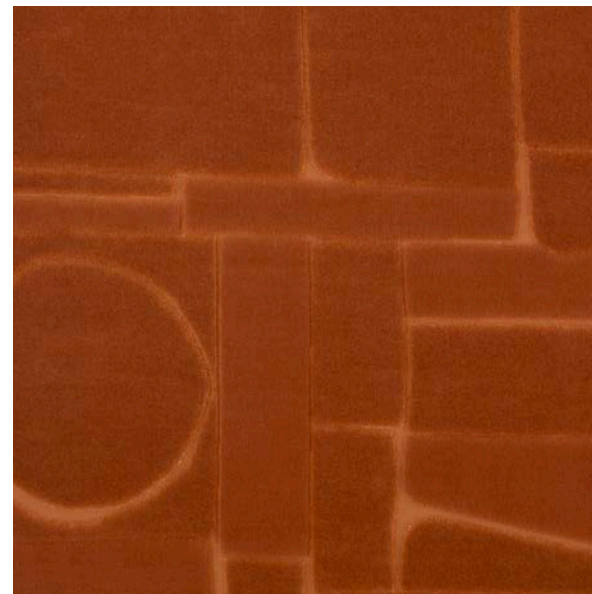
**COLOURS** 7



**OYSTER**  
3007F-03



**HONEY**  
3007F-05



**CAYENNE**  
3007F-06



**COCOA**  
3007-07



**FROST**  
3007F-04



**ASPARAGUS**  
3007F-02



**PRUSSIAN BLUE**  
3007F-01





# CONTACTS

## Sales

Jo Hughes

[sales@georgespencer.com](mailto:sales@georgespencer.com)

## Marketing

Melissa Brouard

[marketing@georgespencer.com](mailto:marketing@georgespencer.com)

## Public Relations

[mail@arcpr.co.uk](mailto:mail@arcpr.co.uk)



[georgespencer.com](http://georgespencer.com)

George Spencer Designs, 309-311 Design Centre East, Chelsea Harbour, SW10 0XF, London, United Kingdom  
Part of The Edward Alexander Group

[Instagram](#) • [Facebook](#) • [Pinterest](#) • [Linkedin](#) • [Newsletter](#)