

# GATEKEEPER OFF-ROAD

## Jet Ski Hauler Installation Instructions

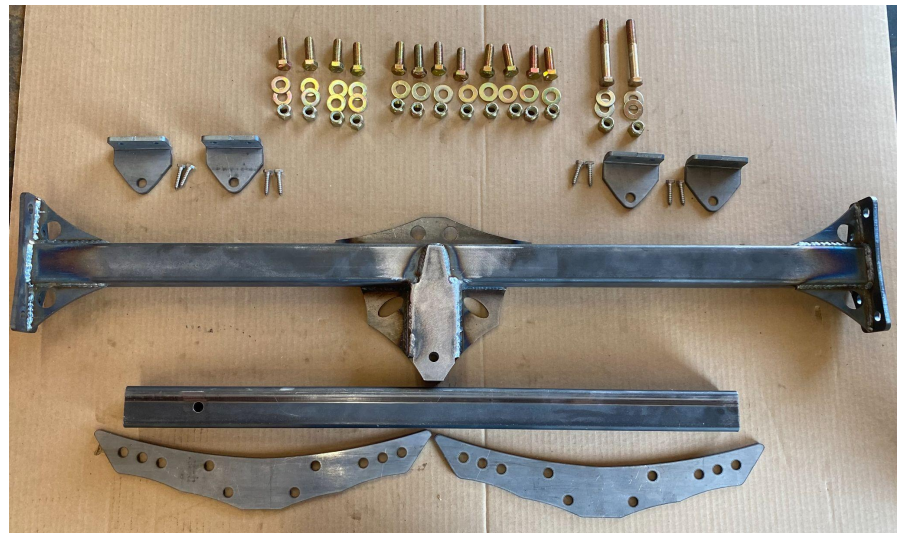
Recommended for Single Seater Jet Skis Only

### Tools Needed:

- 19mm or 3/4 Wrench
- 19mm or 3/4 Socket
- 11mm or 7/16 Socket or Wrench
- 3/32 Drill Bit w/Drill

### Parts Included:

- Jet Ski Hauler (main frame)
- Hitch Tube (x1)
- Carpeted Bunks (x2)
- Side Wings (x1)
- Bunk Mount (x4)
- 1/2-20x4" GR8 Bolts (x2)
- 1/2-20x1" GR8 Bolts (x12)
- 1/2-20 GR8 Nylock Nuts (x14)
- 1/2 GR8 Washers (x20)
- 1/4 Lag Screws (x4)



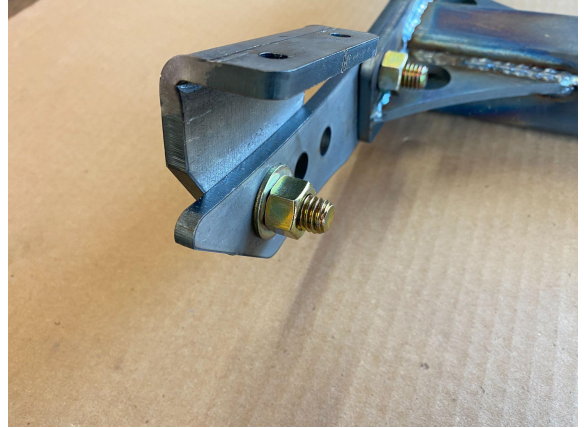
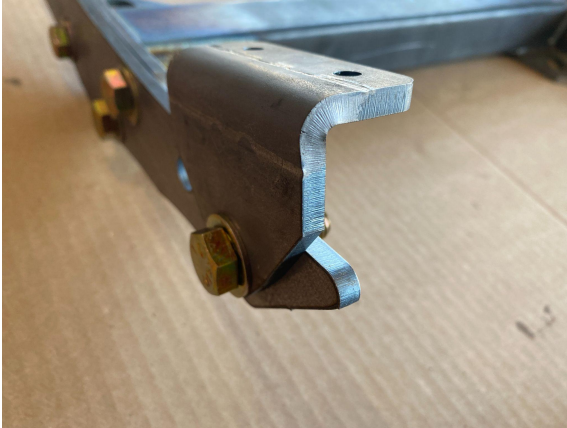
### Installation:

1. After painting frame start the install process by bolting the "Side Wings" on with 4x (1/2-20x1" GR8 Bolts) using one washer on the outside and one nylock nut on the side (towards the hitch tube).



# GATEKEEPER OFF-ROAD

2. Bolt "Bunk Mounts" on using 4x (1/2-20x1" GR8 Bolts) with two washers and one nylock per bolt. Bolt on from outside of Side Wings as shown below.



3. Set carpeted bunks on the ground or workbench with the seam side facing up. Set Hitch Hauler on top of bunks as shown below and line up bunk mounts. Center bunks so you have an equal amount showing on both sides (measurement in picture may vary depending on actual bunk length).



# GATEKEEPER OFF-ROAD

4. With bunk mounts in place and centered, drill pilot holes in the bunks using your 3/32 Drill Bit in the two holes of the metal bracket and screw in the provided 1/4 lag bolts. **DON'T OVERTIGHTEN AS YOU MAY STRIP OUT THE WOOD** (It may be easier to do this step one mount at a time so the wood doesn't shift on you when moving to the next mount).



5. Bolt Hitch Tube to Main Frame using the 2 supplied 1/2-20x4" GR8 Bolts (2 washers and one nylock per bolt). Make sure to tighten bolts to at least 75 ft lbs before using.



6. Test Fit Jet Ski before use and adjust bunks to fit best using either of the three mounting holes on the Side Wings. Each gusset has a hole for ratchet straps. Double check all hardware and tightness of straps before each use.