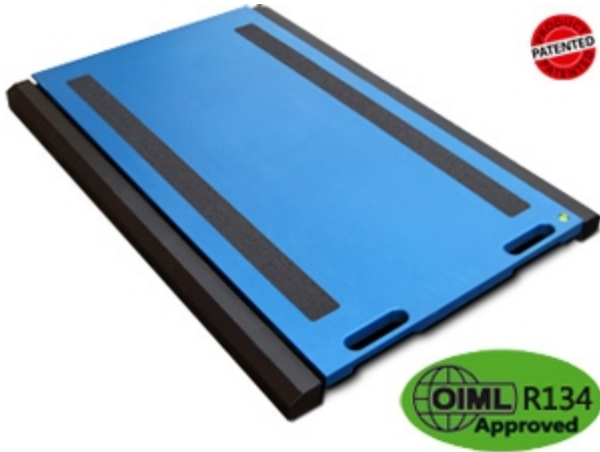




WWSE

WWSE "PROFESSIONAL" WHEEL WEIGHING PLATFORMS



Platforms designed for creating weighing stations for large vehicles (vans, trucks, tankers, tractor-trailers, etc.); particularly accurate and sturdy, with attention to details.

The best solution
for advanced industrial
applications

FEATURES

- Platform dimensions: 700x561mm. Height 55mm. Weight approximately 26kg.
- Loading surface: 700x450mm.
- Fitted with wheels for transporting the platform.
- Sturdy structure, made in special aluminium, which guarantees lightness and makes these suitable also for harsh working conditions.
- Cable with quick connector, platform side.
- 10 m cable for connecting platform to indicator, complete of connector.
- IP68 stainless steel load cells.
- Hermetic junction box with IP68 protection degree.
- Special vulcanised nonslip rubber applied under the platform, for good grip on all types of surfaces.
- Extremely simple and reliable connection of the scale to the weight indicator.
- Fitted with IP68 protection, with IP68 connector and PUR cable.
- The WWS platforms are patented; the number is 1.342.302.
- Available in legal for trade approved version.
- Available in high resolution version.
- Available upon price estimate in Atex version for 1&21 e 2&22 zones.

NOTES ON THE CE-M APPROVED VERSIONS

- The platforms are for legal for trade use:
 - In the single-platform systems, not used to weigh vehicles.
 - In the wheel weighing systems in which the number of platforms is equal to the number of vehicle wheels.
 - In the axle weighing systems composed of one or more multiples of WWS platforms, except possible limitations of use for some European States.
- The axle weighing systems with 2 WWS platforms and a 3590E "AF09" weight indicator are OIML R134 certified for the dynamic vehicle weighing, according to the legal standards in force in the Country of use.
- The CE-M legal for trade divisions indicated in the "version" table are available with ECEM option. ECEM option is needed for each legal for trade platform of the system.
- Legal for trade systems with more than one WWS, are fitted with the approval of the weight sum and related division:
Example for a 4 pads system
Single CE-M Platform: Max=1500kg and e=0,5kg
CE-M SUM: Max=6000kg and e=2kg

VERSIONS

Available versions

Code	Surface l x w (mm)	Max (kg)	d (kg)	M (kg)	d* HR (kg)
WWSE6T	700x450	6000	2	2	0,2
WWSE10T	700x450	10000	5	5	0,5
WWSE15T	700x450	15000 (12500**)	5	5	0,5

(*) These divisions are obtainable only with the relative options

(**) With ECEM legal for trade approval , Max=12500kg



GRAVITATION LTD.

UNIT 2B SECTION 5 DUNSHAUGHLIN - - CO. MEATH - IRELAND

Tel. 00353469078900

Fax. 00353469078911

E-mail info@gravitation.ie

Web www.gravitation.ie