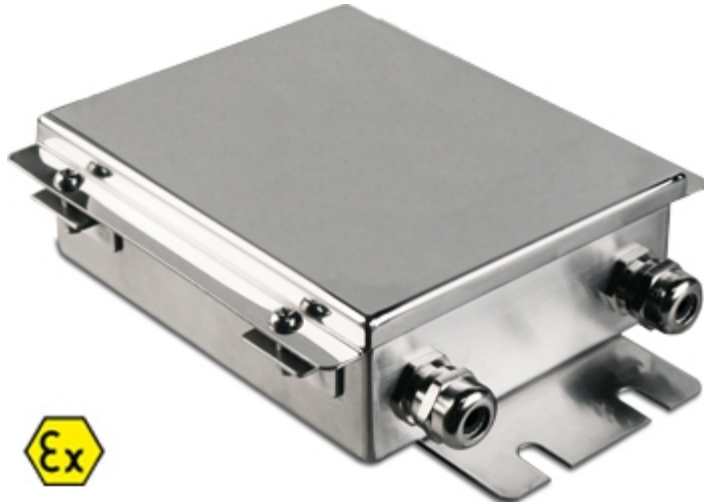




JBQAI

"JBQAI": EQUALISED JUNCTION BOX FOR ATEX ENVIRONMENTS



Stainless steel junction box with IP66 protection from water and dust, and fitted with an intrinsically safe electronic board for junction and equalisation of load cells. Terminal boards with screws for easing the connection of the load cells and signal adjustment trimmer, for an accurate and reliable equalisation. Marking:
ATEX II 2G Ex ib IIC T6 Gb for gases.
ATEX II 2D Ex tb IIIC T115°C Db IP65 for dust.

The best solution
for advanced industrial
applications

TECHNICAL FEATURES

- Designed and made according to the ATEX 94/9/CE directive, group II category 2GD, according to the IEC/EN60079-0, IEC/EN60079-11, and IEC/EN60079-31 norms.
- Stainless steel case.
- Protection degree: IP66.
- Dimensions: 190x130x45mm (lxwxh).

NOTE: the dimensions are not compatibles for mounting on 4 load cells platforms/pallet weighers.

ATEX PARAMETERS OF THE JUNCTION BOX

- $U_o = U_i = 24\text{Vdc}$
- $I_o = I_i = 174\text{mA}$
- $C_o = C_i = 0\text{mF}$
- $L_o = L_i = 0\text{mH}$

or

- $U_o = U_i = 12\text{Vdc}$
- $I_o = I_i = 3,33\text{A}$
- $C_o = C_i = 0\text{mF}$
- $L_o = L_i = 0\text{mH}$



GRAVITATION LTD.

UNIT 2B SECTION 5 DUNSHAUGHLIN - - CO. MEATH - IRELAND

Tel. 00353469078900

Fax. 00353469078911

E-mail info@gravitation.ie

Web www.gravitation.ie

All the specifications and images can be subject to variations and upgrades without prior notice.