

Vowel sounds can be long or short. Long vowels can be made with a single letter or a digraph (two letters making one sound).



The sound of **i** in **big** is a short vowel sound. The sound of **igh** in **fight** is a long vowel sound.



First, choose the correct word to match to the image.
Next, circle **S** if the vowel is **short** or circle **L** if the vowel is **long**.

light | ring | night | fish

1.



fish

S | L

2.



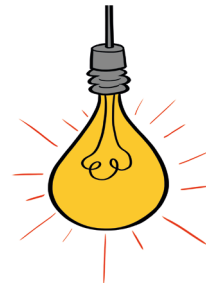
S | L

3.



S | L

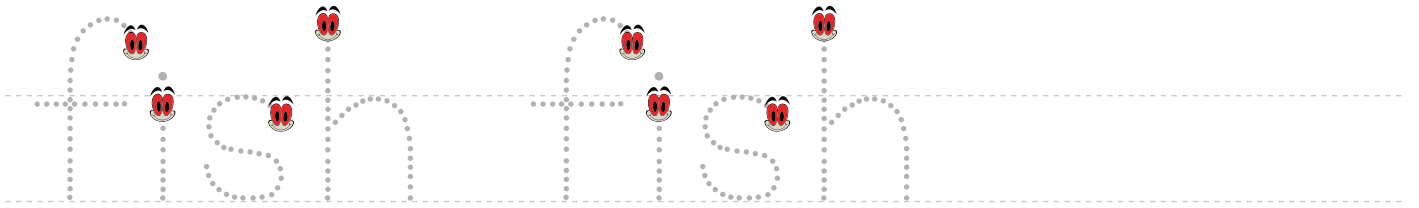
4.



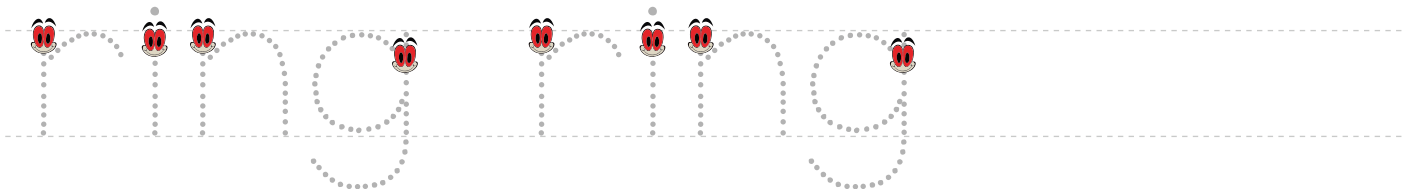
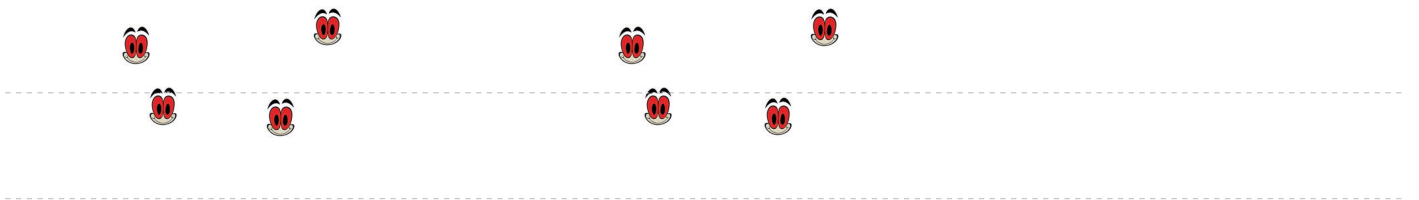
S | L

Answer Keys: 1.fish - (S)
2.ring - (S)
3.night - (L)
4.light - (L)

Trace the words.



Try it out. Start with the emoji.



**SHORT OR
LONG VOWEL**

**HANDWRITING
PRACTICE**

Trace the words.

night night

night night

light light

light light