

DIPHTHONGS CHART



Two letters blended together can make a long vowel sound. These are sometimes called diphthongs.

oi and **oy** are different spellings that make the same vowel sound

oi
coin



oi is often used at the **beginning** or **middle** of a word

oy
toy



oy is often used at the **end** of a word

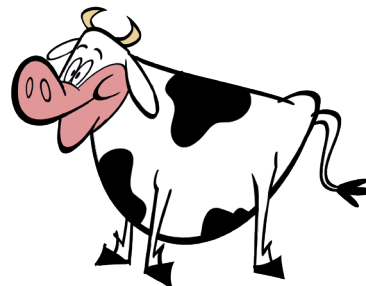
ow and **ou** are different spellings that make the same vowel sound

ou
house



ou is often used at the **beginning** or **middle** of a word

ow
cow



ow is used at the **beginning**, **middle**, or **end** of a word

Mrs Wordsmith
DIPHTHONGS =
COMPLETE THE
WORD

Name:

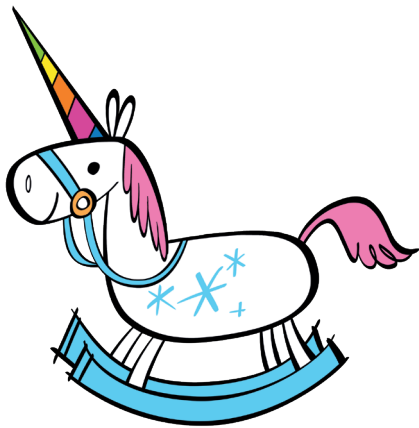
Two letters blended together
can make a long vowel sound.

These are sometimes called diphthongs.



oi or **oy**?

Complete the word!



toy

oy | oi



sol

oy | oi



joi

oi | oy



toilet

oi | oy

Mrs Wordsmith
DIPHTHONGS =
COMPLETE THE
WORD

Name:

Two letters blended together
can make a long vowel sound.

These are sometimes called diphthongs.



ou or ow?

Complete the word!



h _ _ l
ou | ow



cl _ _ d
ou | ow



_ _ _ l
ou | ow



fl _ _ _ er
ou | ow

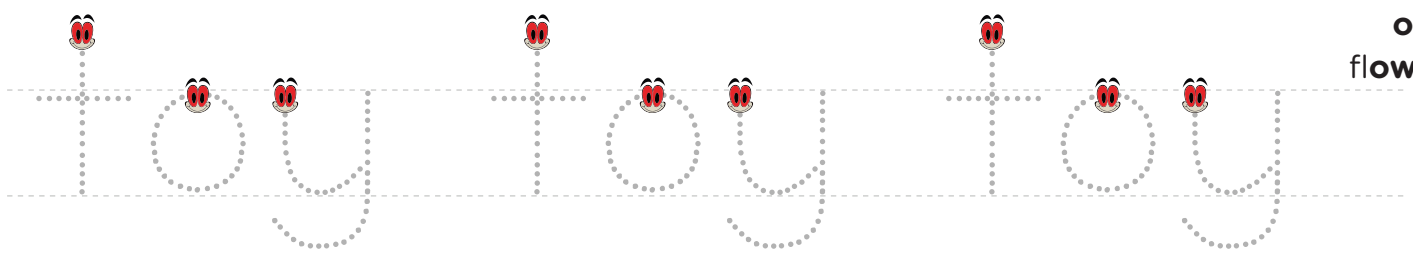
Mrs Wordsmith
DIPHTHONGS =
COMPLETE THE
WORD

Name:

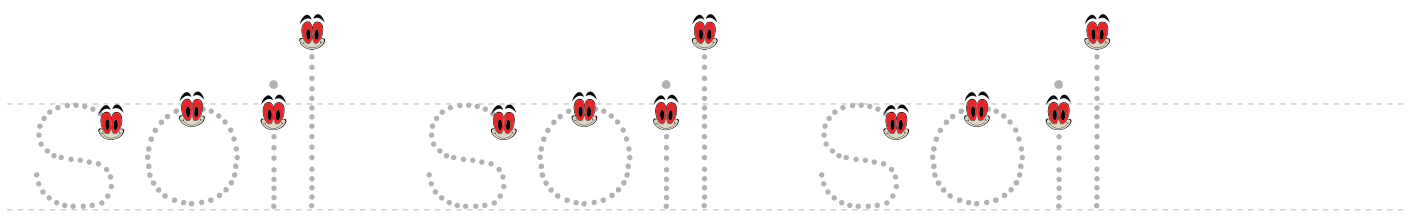
HANDWRITING
PRACTICE

- Answer Keys: toy
soil
joy
toilet
howl
cloud
owl
flower

Trace the words.



Try it out. Start with the emoji.

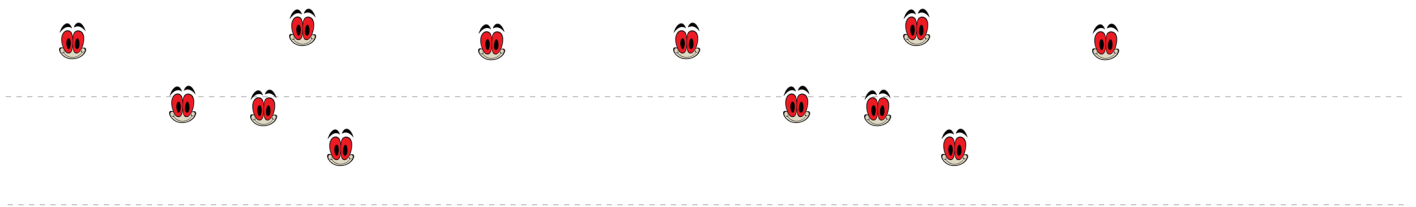
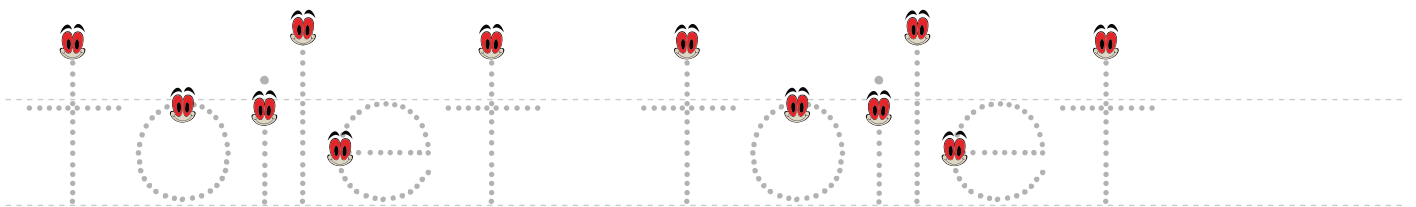
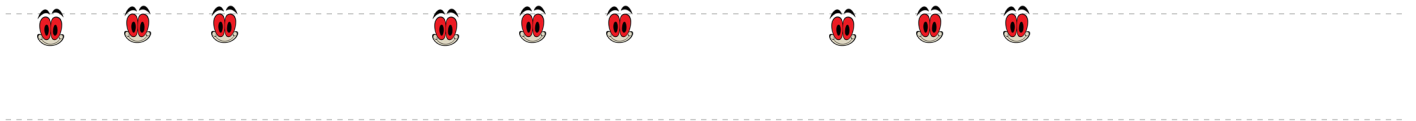
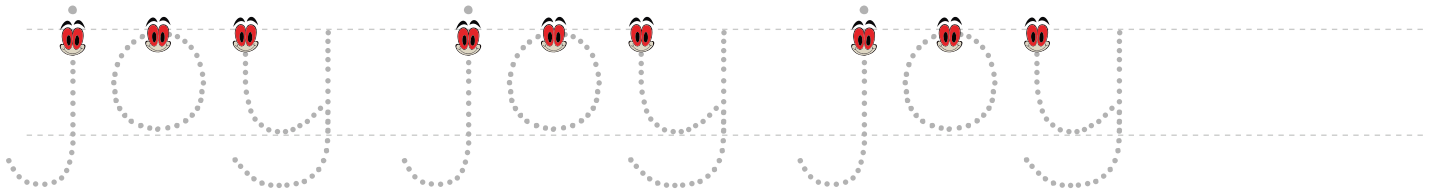


Mrs Wordsmith
DIPHTHONGS =
COMPLETE THE
WORD

Name:

HANDWRITING
PRACTICE

Trace the words.



Mrs Wordsmith
DIPHTHONGS =
COMPLETE THE
WORD

Name:

HANDWRITING
PRACTICE

Trace the words.

how how

ow ow

cloud cloud

clou cloud

Mrs Wordsmith
DIPHTHONGS =
COMPLETE THE
WORD

Name:

HANDWRITING
PRACTICE

Trace the words.

ow ow ow

ow ow ow

flower

flower