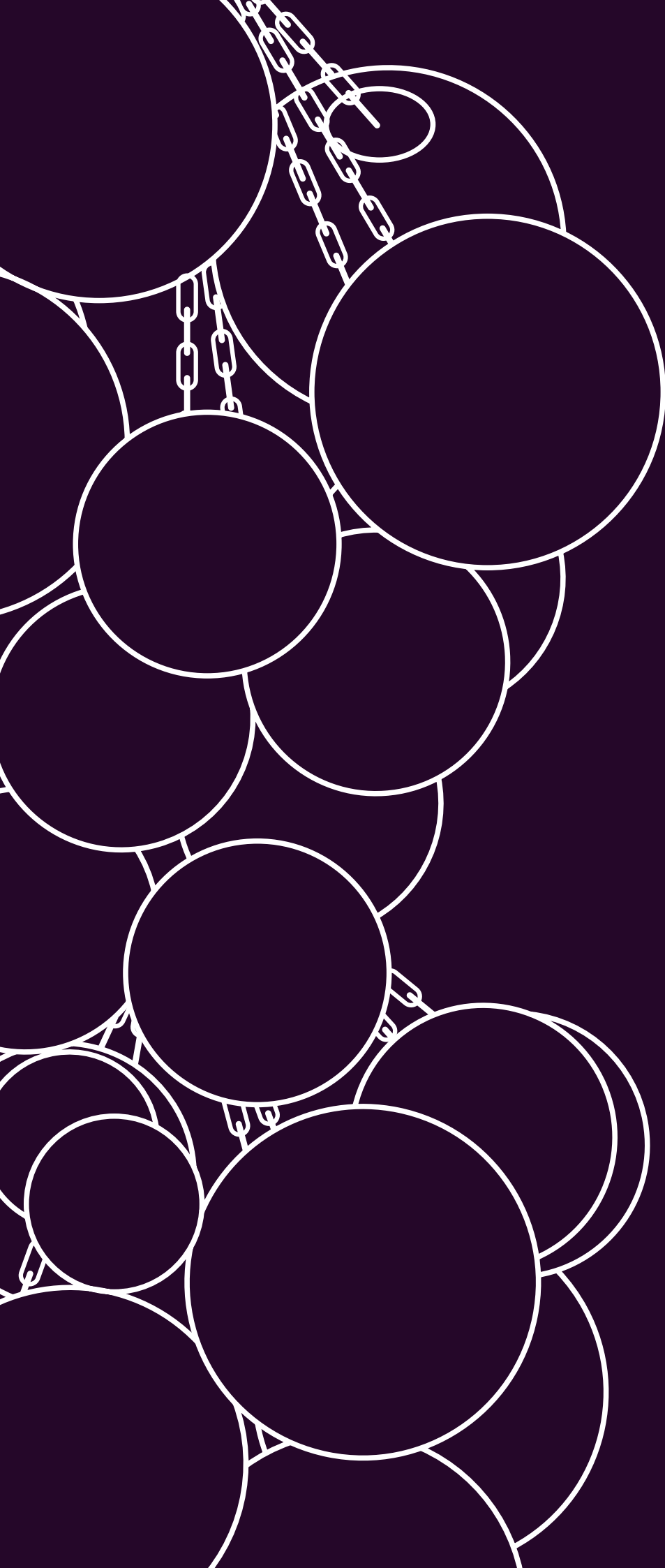


**CAMERON
DESIGN
HOUSE**



KUULAS



KUULAS

Introducing our Kuulas chandelier, the latest addition to our collection of bespoke sculptural designs. Each glass pearl is hand-blown by artisans before being individually hung on a husky chain. The piece exudes a sense of cultivated elegance with an industrial flair through modular design.

Available in three sizes - 25, 55 and 110. Presenting an exclusive selection of fourteen glass colours to choose from, especially curated by Creative Director Ian Cameron, the piece is bound to make a statement in any space. Bespoke options and design service available.

FINISHES

The Kuulas chandelier can be specified in one of fourteen glass colours, especially selected by Ian Cameron, Creative Director of Cameron Design House. With a vast array of colours to choose from including Fig, Slate, Pearl, Cashmere, Baize Green, Ceramic Blue and Putty, our Design Team will work with you to design the perfect piece for your space.

Each colour evolves as the glass pearls are illuminated allowing the piece to emanate different sensations in one setting. Due to the handmade nature of the glass, each pearl is completely unique.



AMBER



PUMPKIN



CAMEL



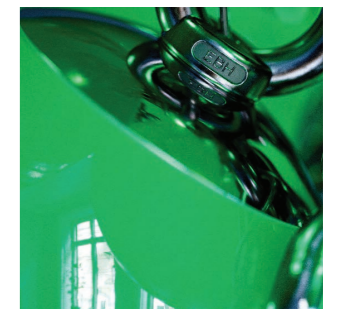
HUSK GREEN



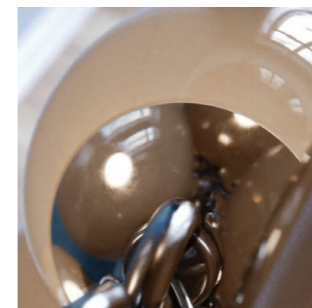
POWDER GREEN



HERB GREEN



BAIZE GREEN



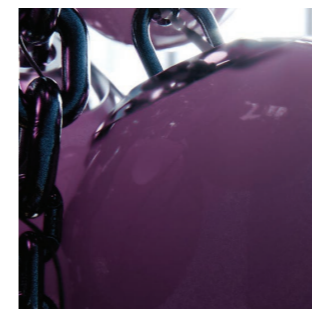
CASHMERE



PUTTY



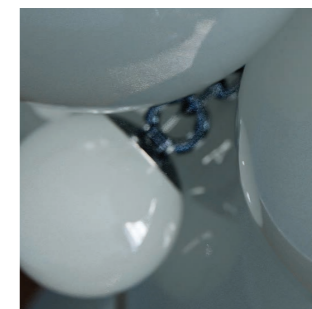
PLUM



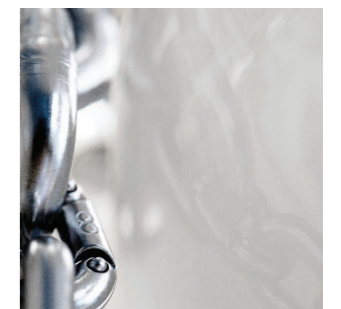
FIG



CERAMIC BLUE



SLATE



PEARL



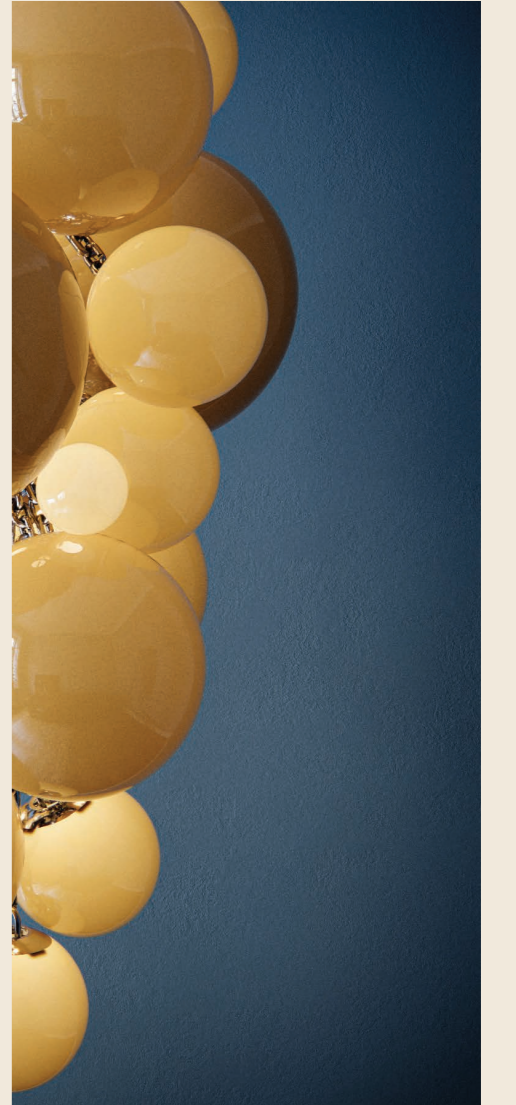
AMBER



PUMPKIN



CAMEL

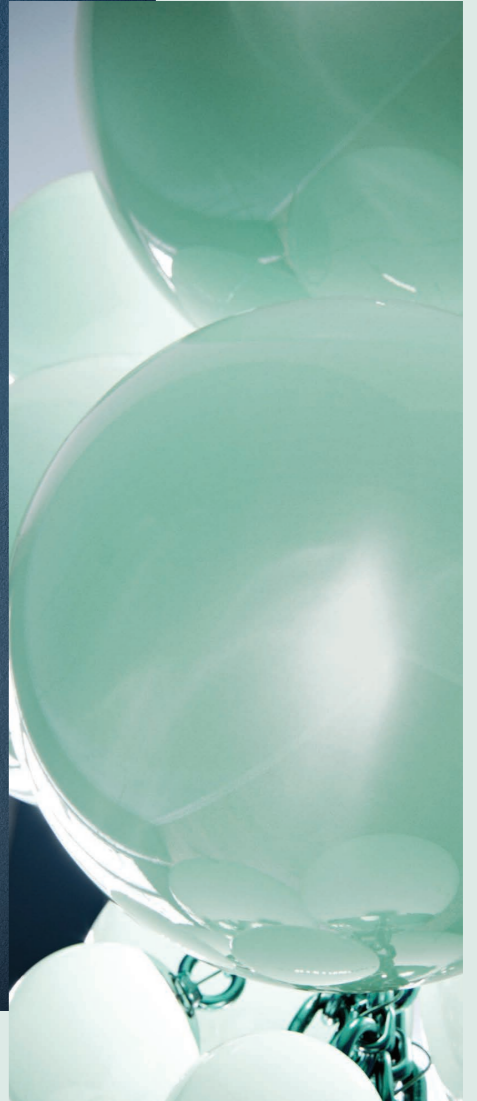


HUSK GREEN

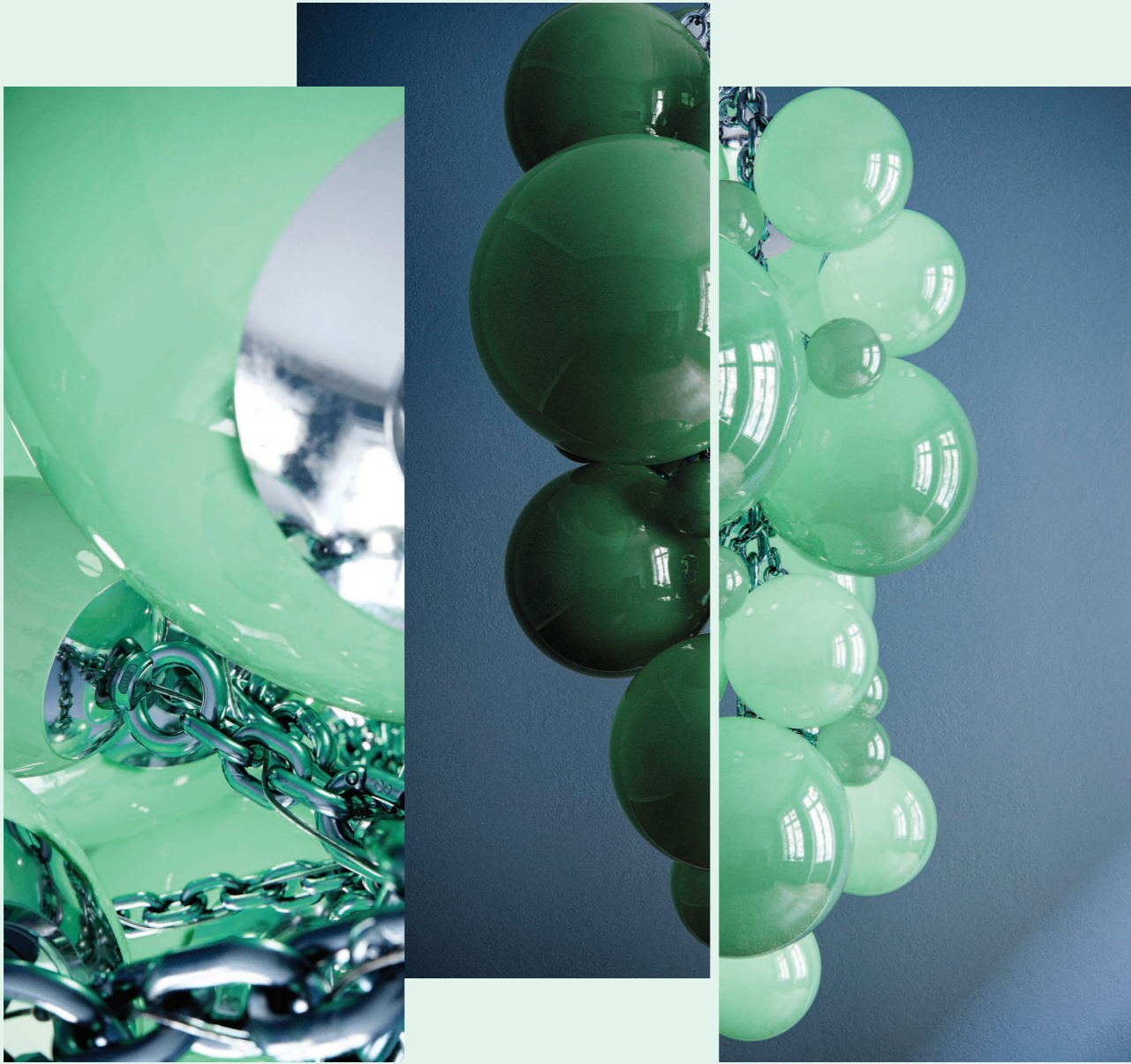




POWDER GREEN



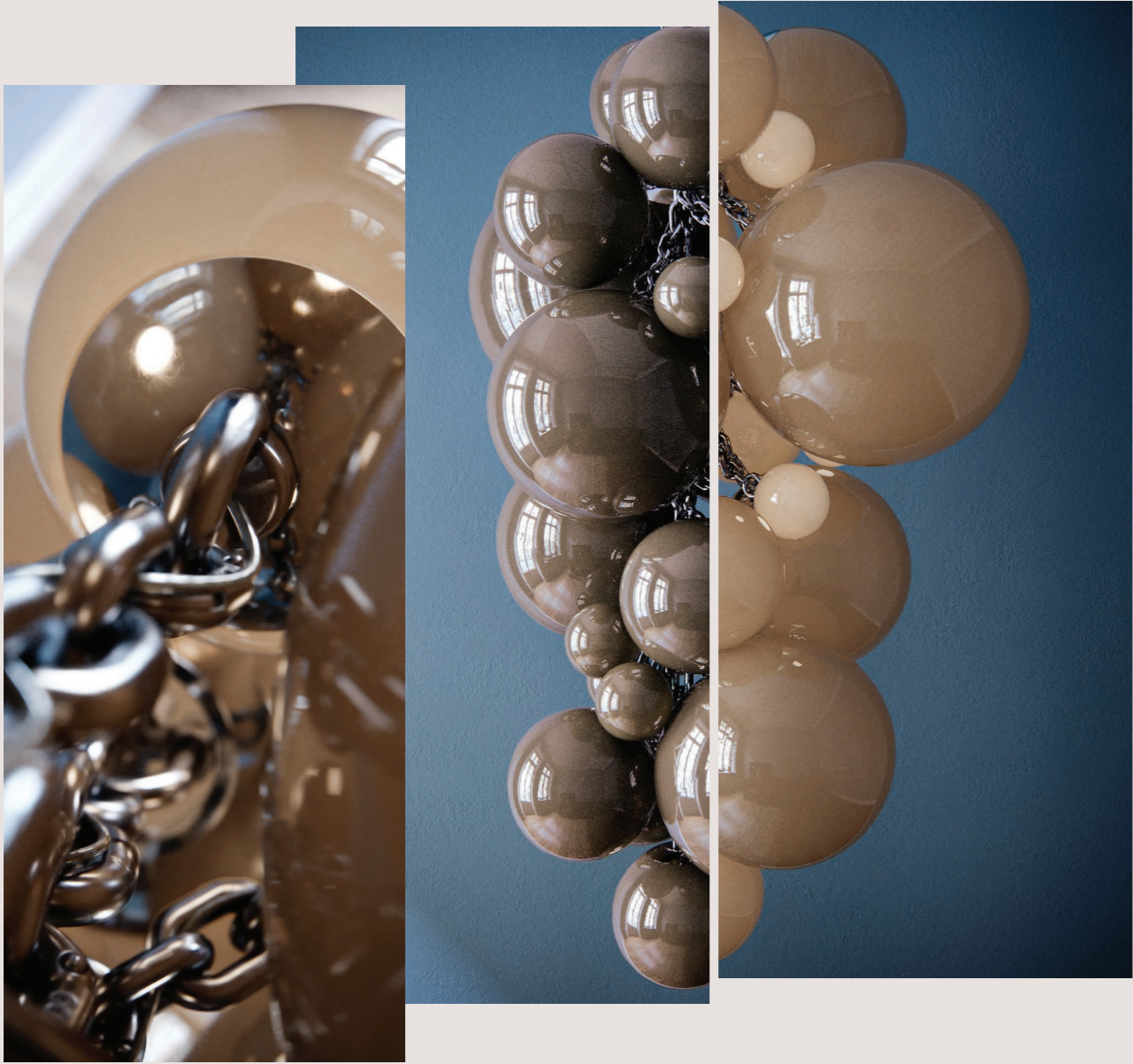
HERB GREEN



BAIZE GREEN

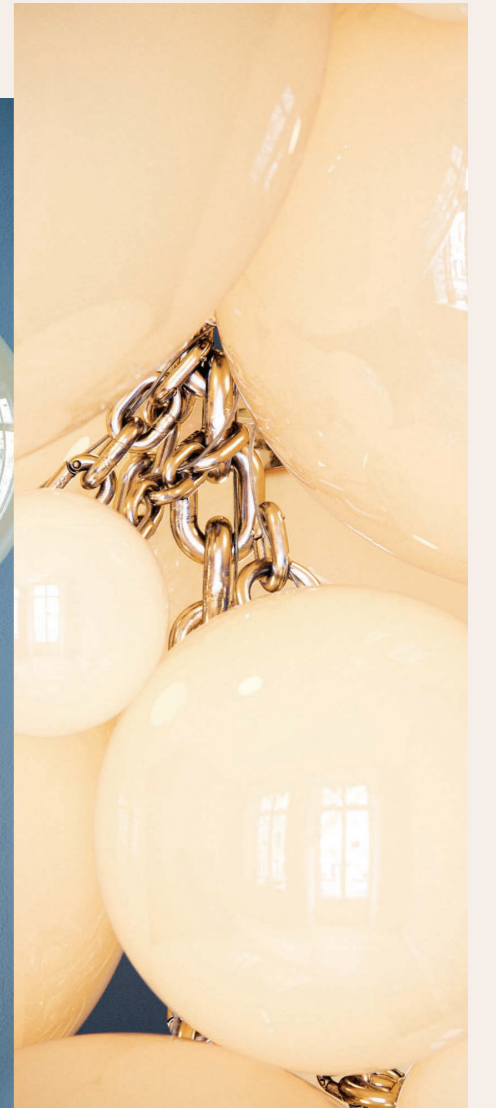


CASHMERE





PUTTY



Plum

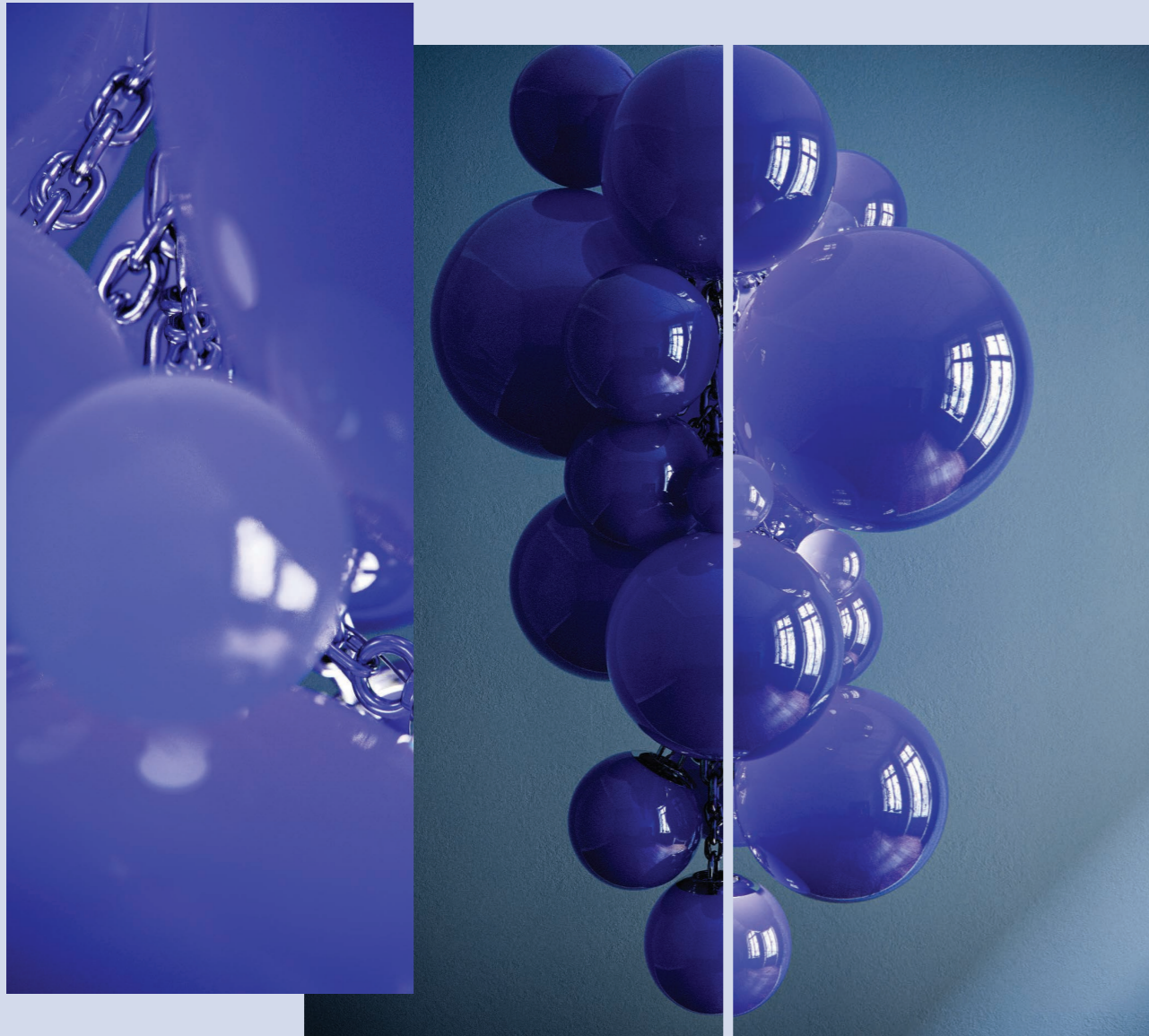




FIG



CERAMIC BLUE





SLATE



PEARL



SPECIFICATION



Our Kuulas chandelier focuses on making a statement through modular design combining glass and metal elements. The piece exudes a sense of cultivated elegance with an industrial flair.

Each hand-blown glass sphere is up to a 40cm diameter. Bespoke options and various colours available. Integral (Integrated?) LED lighting.

Hanging

Fully adjustable drop height on chandelier chain.

Light Source

Hand-blown glass diffusers.
LED matrix, CRI 80+, ~ 30K hours life.
LED standard colour temperature option: 2.7k
Power to fixtures: Via integrated power cable.

Dimming

Dimming protocols available on request.
Wattage dependent on sizing.
Input Voltage: 110V-230V-277V (to be specified).

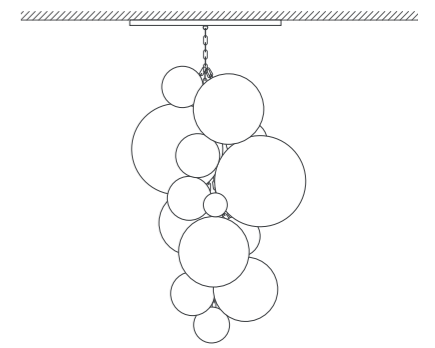
Maintenance

Clean with smooth and dry cloth. Do not use any ammonia, solvents or abrasives. No user serviceable components. Refer to instruction manual for detailed cleaning instructions.

Bespoke options and design service available.
All fittings and installation instructions are provided.
Contact CDH for further technical details/downloads:
technical@camerondesignhouse.com
<https://camerondesignhouse.com>

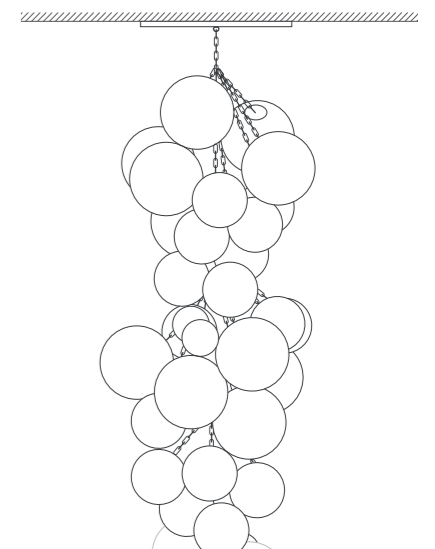
Kuulas 25

Standard dimensions:
25 spheres
H150xW100cm
H59"xW39"



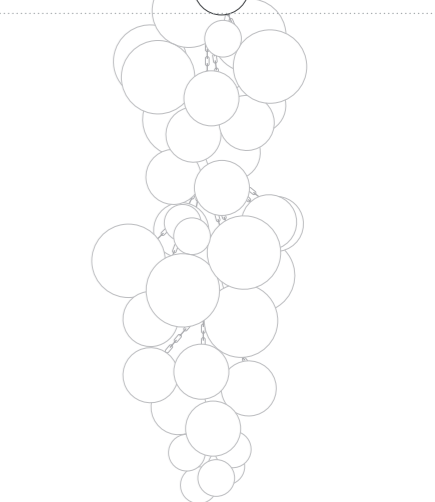
Kuulas 55

Standard dimensions:
55 spheres
H300xW120cm
H120"xW47"



Kuulas 110

Standard dimensions:
110 spheres
H600xW120cm
H240"xW47"



Finishes and Materials Options

Glass Finishes

These are colour examples for when the light is illuminated, each colour will vary when the light is turned off.

Colours are for illustrative purposes only and may vary between sizing and illumination.



Polished Chain



Samples and other finishes available upon request



Contact Us

To make an appointment at our studio and workshop
to arrange a site visit or to discuss your project
please contact us on

+44 (0)207 372 7748

sales@camerondesignhouse.com

www.camerondesignhouse.com

