



Dr.SHEVA

Nature's Beauty Secrets

TRIPLE-ACTION FORMULA



YOUNGER,
HEALTHIER
SKIN, FAST!



Erage Gel

COLLAGEN & ELASTIN

WORLD'S 1st TUNA COLLAGEN

HYDROLYSED

UP TO

2X

FASTER ABSORPTION WITH

TRIPLEPEPTIDE TECHNOLOGY





SHIZUOKA PREFECTURE, JAPAN

Origin of Dr. Sheva's Erage Gel



Dr.SHEVA

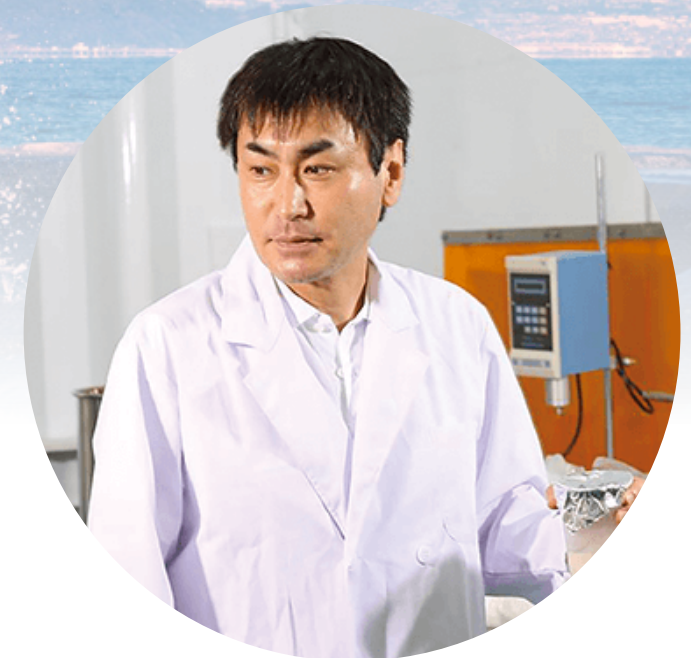
Nature's Beauty Secrets

WORLD'S ^{1st} TUNA COLLAGEN

Japan is one of the world's largest consumers of tuna fish. In line with sustainable fishing and farming efforts globally, our laboratory sought ways to reduce aquaculture waste, especially of such a precious natural resource.

We discovered a secret to this nutritious treasure of the sea. Its scales are especially rich in collagen! With my patented extraction and hydrolysation methods, we at Dr. Sheva laboratories are able to break the collagen and elastin into molecules fine enough to penetrate and nourish your skin.

It is our greatest honor to share this secret and the gift of youthful, healthy skin with the world.



Dr. Sheva, creator of Erage Gel



Tuna Collagen

THE COLLAGEN THAT'S BEST FOR YOU.

4.4 Billion years ago, the earth was covered in water. Life began in the ocean, thus humans evolved from marine life.

Marine and fish collagen remains the ***simplest, purest, yet most evolved collagen*** with the lowest molecular weight and bioavailability known to man.



Erage Gel

COLLAGEN & ELASTIN

FROM SCALE TO SKIN

Fish scales and skin are exceptionally rich in collagen and elastin, with the smallest particle structures compared to other animals.

PUREST SOURCE

Unlike collagen sourced from cows, pigs, chickens and other animals, fish and marine collagen remain relatively disease-free. Fish is also dietarily more universal and permissible across most cultures.

FINEST SIZE

Both fish scales and skin are exceptionally rich in Type I collagen and elastin, with the finest particular structures and lowest molecular weights compared to other animals. This makes fish collagen the most bioavailable source of collagen and elastin today.

FASTEST ABSORPTION

With hydrolysation, the already small particles of collagen and elastin are further broken down into tripeptides, for up to double the transdermal absorption rate and efficacy versus unhydrolysed collagens.



Dr. Sheva's very own patented hydrolysis technology breaks down the collagen and elastin **polypeptide chains** into smaller sized **tripeptides** - the tiniest possible molecular structures of both proteins.

Tripeptides are tiny enough to penetrate your skin's epidermis, activating Dr. Sheva's Erage Gel's Triple-action benefits from both inside and out.



Collagen Tripeptide



1

MAXIMUM ABSORPTION

Unlike regular collagen found in other collagen creams and gels, tripeptides are small enough to penetrate your skin, making it the most bioavailable form of collagen and elastin today.

2

STIMULATES COLLAGEN PRODUCTION

The presence of collagen within your skin triggers an auto wound-repair mechanism. This tricks your brain into signalling surrounding fibroblasts to synthesize new collagen to aid the healing process.

3

COLLAGEN & ELASTIN COMBINATION

As collagen strengthens your skin, elastin gives it elasticity - the ability to stretch and bounce back for healthier and younger skin you can see and feel.

Tripeptide
(Short chain)

Polypeptide
(Long chain)

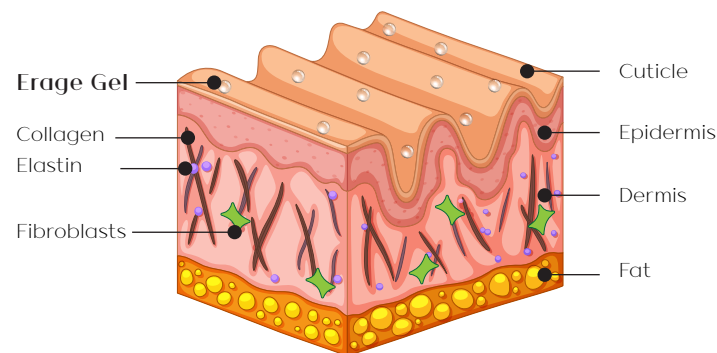


• **Hydrolysis** is a process that breaks down long collagen polypeptide chains into tiny tripeptides, the smallest molecular sizes of collagen and elastin for maximum bioavailability and absorption.

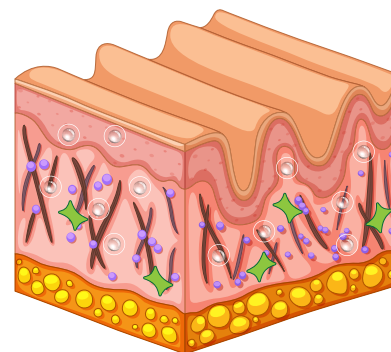


HOW ERAGE GEL WORKS

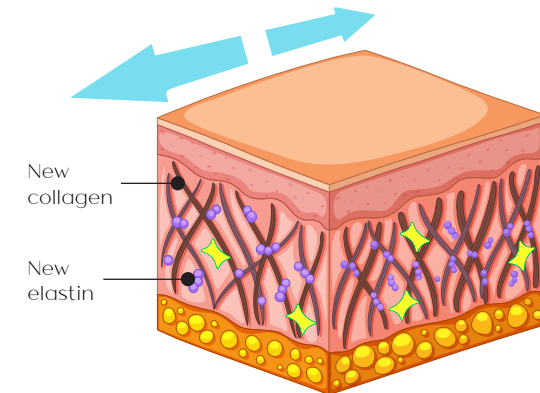
After the age of 20, a person produces about 1 percent less collagen in the skin each passing year. Skin becomes weaker and wrinkled as fibroblasts produce less collagen and elastin. Dr. Sheva's Erage gel restores youth to your skin, from both inside and out via transdermal absorption and stimulating the production of new collagen and elastin from within.



Collagen and elastin tripeptides are absorbed up to 2X faster.



The presence of Erage Gel collagen in the dermis triggers your body's wound healing mechanism.



Fibroblasts produce new collagen and elastin, repairing your skin and restoring its strength and elasticity.

Ready for *SOFTER, FIRMER & YOUNGER SKIN?*

RECOMMENDED USE

- After properly cleansing your face, dispense a bean-sized drop of Erage Gel - about 8mm in diameter, and gently massage it onto to one half of your face. Dispense a second drop for the other half of your face.
- For faster results, apply a little extra to your problem areas such as wrinkles, uneven skin and fine lines.
- Erage Gel should be applied directly to skin, before applying other creams, moisturizers or makeup.



Erage Gel

COLLAGEN & ELASTIN



Dr.SHEVA

Nature's Beauty Secrets

www.drsheva.com



2-7 Plaza Arkadia, Jalan Intisari Perdana,
Desa Park City, 52200 Kuala Lumpur, Malaysia.