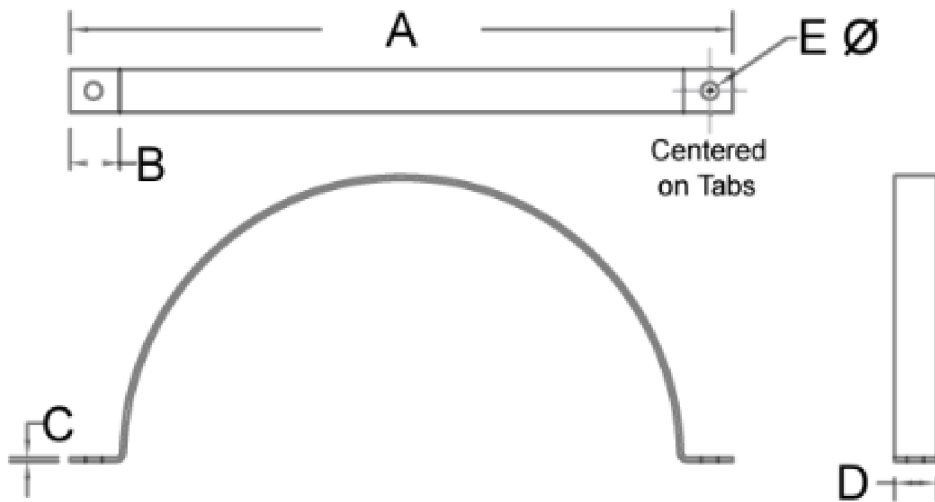




Saddle Hangers

A sturdy, vertical, and horizontally stable option, sometimes called a 'pipe hanger.' It's typically attached to rods or angle supports. This installation provides excellent support and security for the ductwork system. Saddle hangers usually take a bit longer to position and install, so they are often used in conjunction with other hangers.



Saddle Hanger	
Size	
3	25
4	26
5	27
6	28
7	29
8	30
9	31
10	32
11	33
12	34
13	35
14	36
15	37
16	38
17	39
18	40
19	41
20	42
21	43
22	44
23	45
24	46
25	47
26	48