

Flexible Bollard, R-8323

General Description:

The R-8323 Flexible Bollard is composed of a versatile polyurethane plastic. Flexible bollards can bend up to 90 degrees without losing their form. Ideal for high-traffic areas to minimize damage to vehicles in the event of a collision. Features fixed or removable installation methods.

Specifications:

Height: 34"

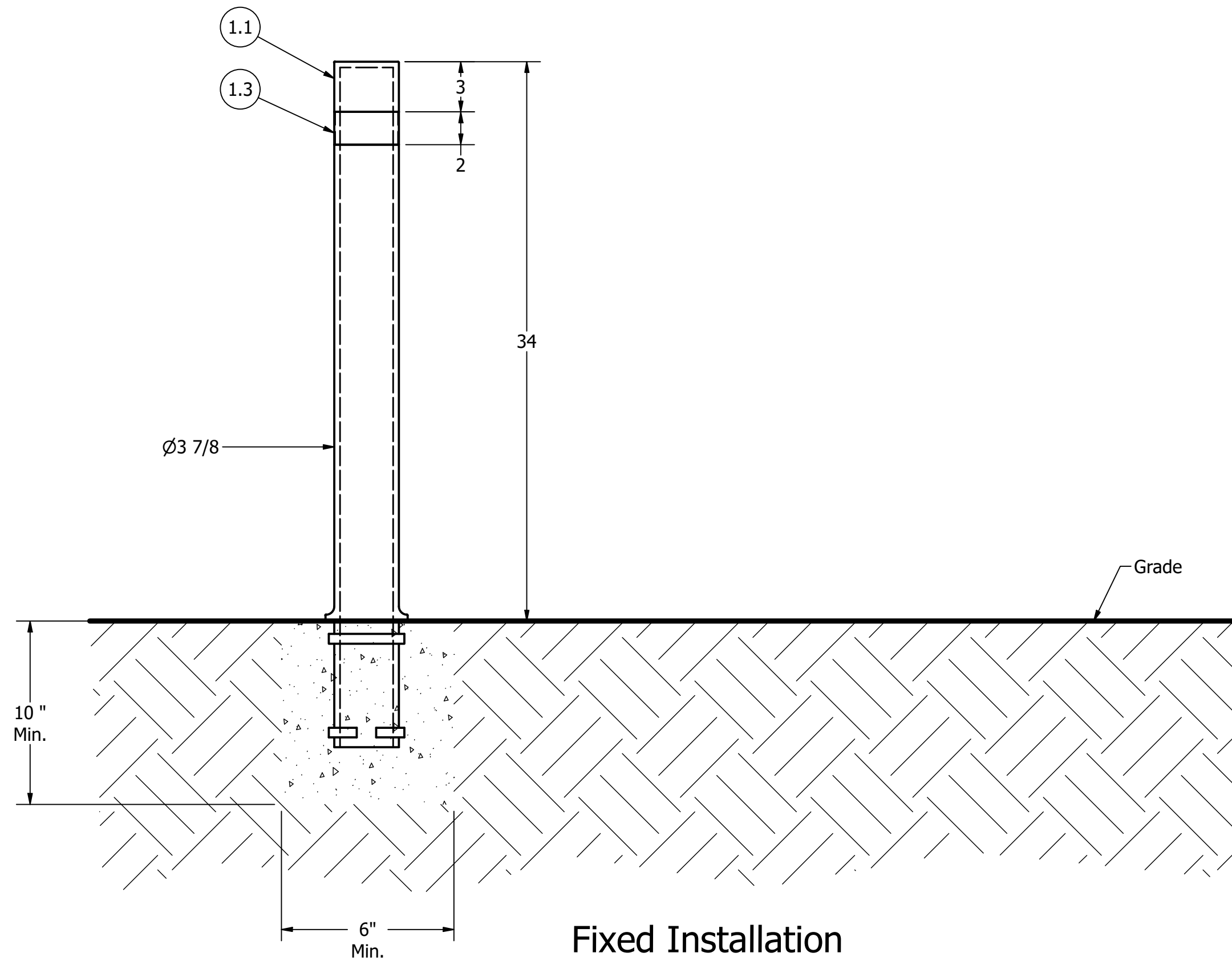
Diameter: 3 7/8"

Weight: 6 lbs

Material: polyurethane

Color Options:

- Black
- Red
- Green



Notes:

- Embedment details are for reference illustration only. Minimum foundation sizes depend on local soil conditions, weather conditions and engineering requirements.
- Bike rack is provided as shown with parts listed below. Concrete foundation and/or installation not provided by Reliance Foundry.
- This drawing is not drawn to scale. Dimensions provided herein are for reference only. Please consult Reliance Foundry sales professionals if any dimension is critical to your particular installation.
- Reliance Foundry reserves the right to amend design and specifications without prior notice for product improvement.

Fixed Installation

RELIANCE FOUNDRY
SINCE 1925

Unit 207, 6450 - 148 Street, Surrey, BC V3S 7G7, Canada
1-877-789-3245 info@reliance-foundry.com
www.reliance-foundry.com

TITLE

Flexible Bollard, R-8323

PARTS LIST					
ITEM	QTY	PART NUMBER	DESCRIPTION	MATERIAL	WEIGHT
1.1	1	R8323	R8323 Flexible Bollard	Polyurethane	6 lbs
1.3	1	R8320-2	Reflective Tape		

SIZE
C

DWG NO
R8323

REV
C

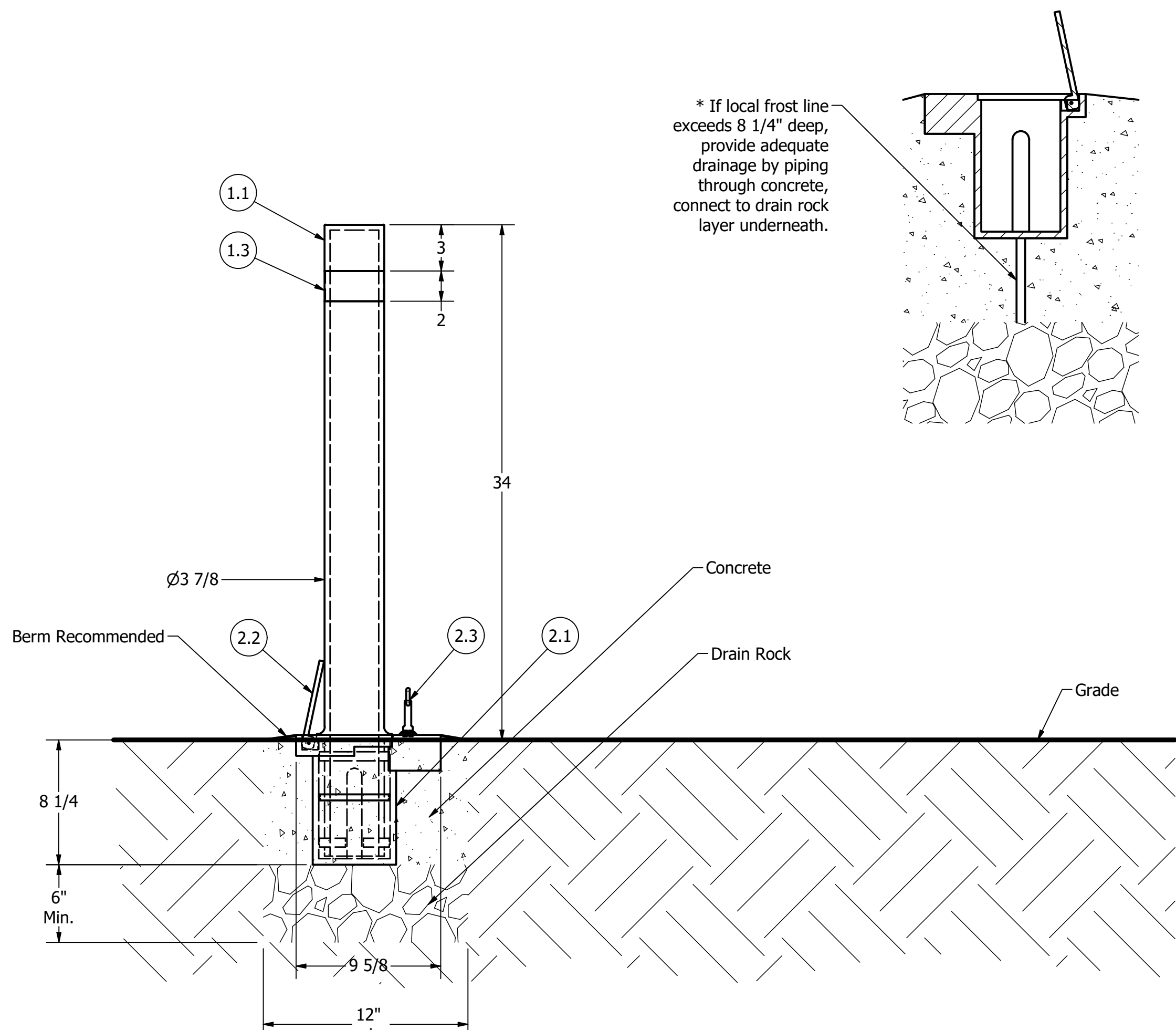
Flexible Bollard, R-8323

General Description:

The R-8323 Flexible Bollard is composed of a versatile polyurethane plastic. Flexible bollards can bend up to 90 degrees without losing their form. Ideal for high-traffic areas to minimize damage to vehicles in the event of a collision. Features fixed or removable installation methods.

Specifications:

- Height: 34"
- Diameter: 3 7/8"
- Weight: 6 lbs
- Material: polyurethane
- Color Options:
 - Black
 - Red
 - Green



Removable Installation

Notes:

- Embedment details are for reference illustration only. Minimum foundation sizes depend on local soil conditions, weather conditions and engineering requirements.
- Bike rack is provided as shown with parts listed below. Concrete foundation and/or installation not provided by Reliance Foundry.
- This drawing is not drawn to scale. Dimensions provided herein are for reference only. Please consult Reliance Foundry sales professionals if any dimension is critical to your particular installation.
- Reliance Foundry reserves the right to amend design and specifications without prior notice for product improvement.

PARTS LIST					
ITEM	QTY	PART NUMBER	DESCRIPTION	MATERIAL	WEIGHT
1	1	R8323 ASM	R8323 Flexible Bollard Assembly	Polyurethane	6 lbs
1.1	1	R8323	R8323 Flexible Bollard	Polyurethane	6 lbs
1.3	1	R8320-2	Reflective Tape		
2	1	R8320R-0	Receiver	Polyurethane	4 lbs
2.1	1	R8320R-1	Receiver Body		
2.2	1	R8320R-2	Receiver Cover		
2.3	1	2707	Receiver Key		

RELIANCE FOUNDRY
SINCE 1925

Unit 207, 6450 - 148 Street, Surrey, BC V3S 7G7, Canada
1-877-789-3245 info@reliance-foundry.com
www.reliance-foundry.com

Flexible Bollard, R-8323

SIZE	DWG NO	REV
C	R8323	C