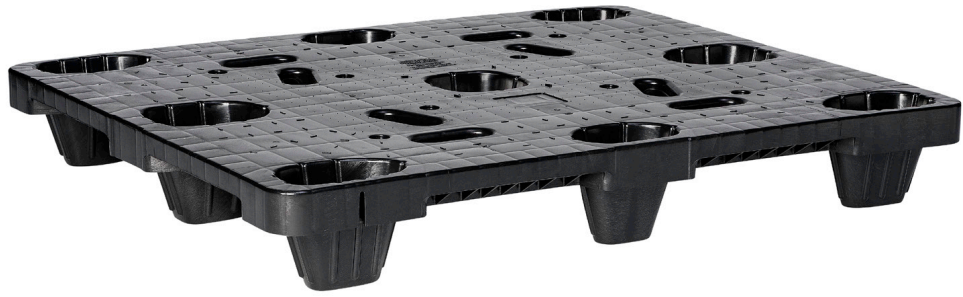


Nestable Distribution Pallet

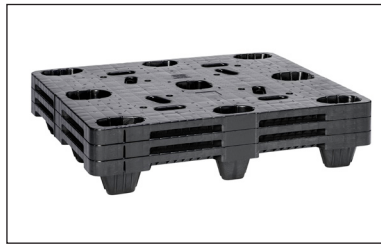
SKU: NPSI-005

Standard Features:

- Heavy duty, Nestable pallet with anti-slip surface and optional grommets (top and bottom)
- One-piece, washable design with no pockets for debris or contamination
- Ergonomic handles for safe manual lifting
- Optional coditherm barcoding and logo branding available
- Easy-to-Use stretch film anchor notch facilitates successful pallet wrapping
- Multiple Leg Options to integrate with your existing float to reduce sorting costs
- 100% Recyclable



Convenient notch for securing shrink wrap



Nestable for easy storage



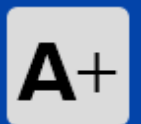
Textured surface



GMA



SOURCE4
INDUSTRIES



(866) 734-8848



sales@source4industries.com



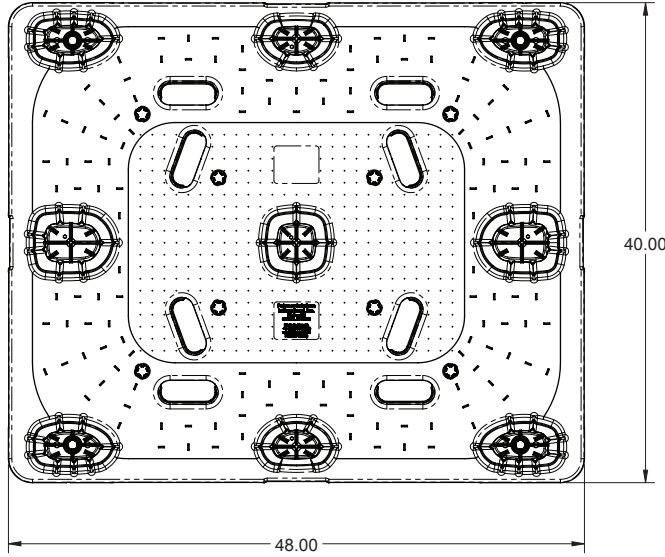
source4industries.com



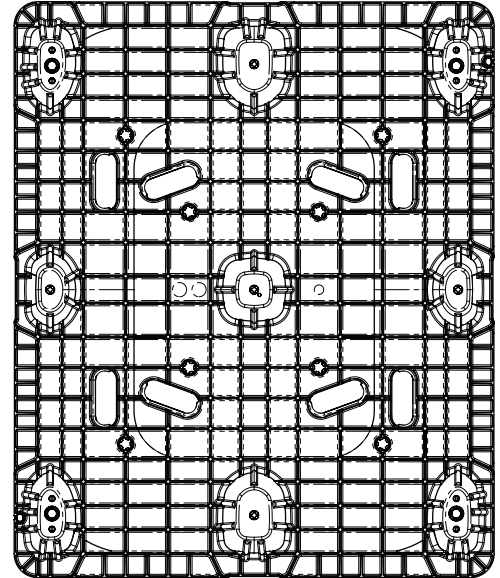
4436 Lawrence St
Las Vegas, NV 89081

Nestable Distribution Pallet

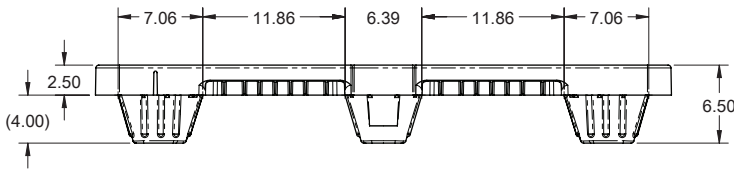
SKU: NPSI-005



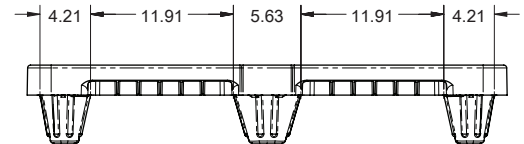
TOP VIEW



BOTTOM VIEW



SIDE VIEW - 48"



SIDE VIEW - 40"

40" X 48" NESTABLE DISTRIBUTION PALLET

DIMENSIONS				LOAD RATINGS (lbs.)		TRUCKLOAD CAPACITY	LTL
Width	Length	Height	Weight	Static	Dynamic	53'	—
40 in.	48 in.	6.5 in.	29 lbs.	30,000	3,000	1200/load	36/stack

SOURCE4
INDUSTRIES



ACCREDITED
BUSINESS

A+



(866) 734-8848



sales@source4industries.com



source4industries.com



4436 Lawrence St
Las Vegas, NV 89081