

2000 SERIES BEADED SHELVING

OPEN OR CLOSED SHELVING

Open shelving allows more visibility to stored products. A cross brace on both sides as well as on the back help stabilize the unit from swaying.

Closed shelving helps to better contain items within a set space. Closed shelving features 24-gauge back and side sheets to completely enclose the shelving unit.

TIP! Backs can be shared when shelving is installed in a back-to-back configuration.

BEADED POSTS

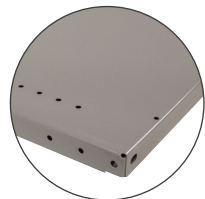
Posts are roll-formed from 14-gauge steel for maximum strength. Posts feature 1-1/2" vertical shelf adjustments. Beaded posts are used on front corners to allow for maximum shelf clearance with angle posts in the rear corners.

SHELVES

Shelves are roll-formed with box formations in the front and rear of the shelf for high capacity ratings. Shelves are available in 22, 20, or 18-gauge steel to provide a variety of weight capacity options.



Beaded Post



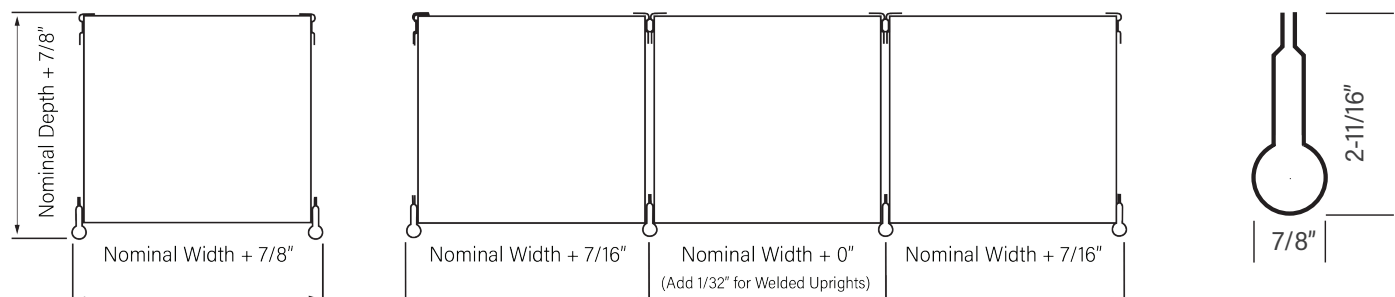
Box Shelf

SHELF LOADS			
Shelf Size	22-Gauge Medium-Duty	20-Gauge Heavy-Duty	18-Gauge Extra Heavy-Duty
36" x 12"	500 lbs	800 lbs	-
36" x 18"	550 lbs	850 lbs	-
36" x 24"	550 lbs	800 lbs	-
48" x 12"	-	500 lbs	750 lbs
48" x 18"	-	550 lbs	900 lbs
48" x 24"	-	500 lbs	900 lbs

**Loads are limited by the ANSI MH 28.1-1997 safety factor of 1.5. Do not exceed uniformly distributed loads shown. Concentrated load points or impact (dropped) loads could cause shelf failure even though the impact load is less than allowable load shown.*

BEADED POST CAPACITIES		
Shelf Space	using Sway Brace or Bolted Side Sheet	using Welded Uprights
12"	4,300 lbs	4,900 lbs
18"	3,100 lbs	4,100 lbs
24"	1,950 lbs	3,200 lbs
30"	1,300 lbs	2,250 lbs
36"	1,000 lbs	1,650 lbs
42"	750 lbs	1,250 lbs

GROWTH CHART



2000 SERIES BEADED SHELVING

Lyon open 2000 series beaded shelving units use beaded posts on front corners and angle posts on rear corners. Cross braces or solid sides/backings help stabilize the unit. All pre-engineered sections have 20-gauge shelves adjustable on 1-1/2" centers. Shelving units ship unassembled.

Order one starter unit and one or more add-ons to make up a row of shelving.

Add additional shelves to maximize your storage options!



- Starter Units Include:
- 2 Beaded Post Upright Assemblies
 - Open Back Brace or Solid Back
 - 5 Shelves with Shelf Clips

- Add-on Units Include:
- 1 Beaded Post Upright Assembly
 - Open Back Brace or Solid Back
 - 5 Shelves with Shelf Clips

Dimensions W x D x H	Capacity per Shelf	Open Starter	Open Add-on	Closed Starter	Closed Add-on	Additional Shelf	Additional 5-Pack Shelves
36" x 12" x 85"	800 lbs	JDP3007	JDP3010	JDP3055	JDP3058	J1021071	J1021075
36" x 18" x 85"	850 lbs	JDP3008	JDP3011	JDP3056	JDP3059	J1021171	J1021175
36" x 24" x 85"	800 lbs	JDP3009	JDP3012	JDP3057	JDP3060	J1021221	J1021225
48" x 12" x 85"	500 lbs	JDP3107	JDP3110	JDP3155	JDP3158	J1021091	J1021095
48" x 18" x 85"	550 lbs	JDP3108	JDP3111	JDP3156	JDP3159	J1021191	J1021195
48" x 24" x 85"	550 lbs	JDP3109	JDP3112	JDP3157	JDP3160	J1021241	J1021245

Capacities are based on evenly distributed loads.

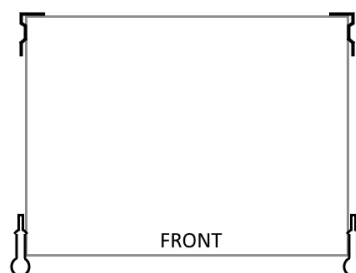


Foot Plate
NFJ1937011



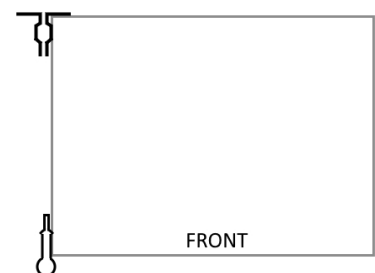
3/8" Anchor
NF8861

2000 Series Beaded Post Starter Unit



Beaded Posts In The Front Offer Clear Shelf Access

2000 Series Beaded Post Add-on Unit



Beaded Posts In The Front Offer Clear Shelf Access