

OPTIONS

Bollard Material (5" Nominal Size)

- RSS04000 Sch 10 Stainless Steel
- RSS04040 Sch 40 Stainless Steel
- RSS04080 Sch 80 Stainless Steel
- RCS04040 Sch 40 ASTM A-53 Carbon Steel
- RCS04080 Sch 80 ASTM A-53 Carbon Steel

Stainless Steel Bollard Finish

- Polished #4 Finish
- As Specified _____

Carbon Steel Bollard Finish

- Powdercoat RAL # _____
- As Specified _____

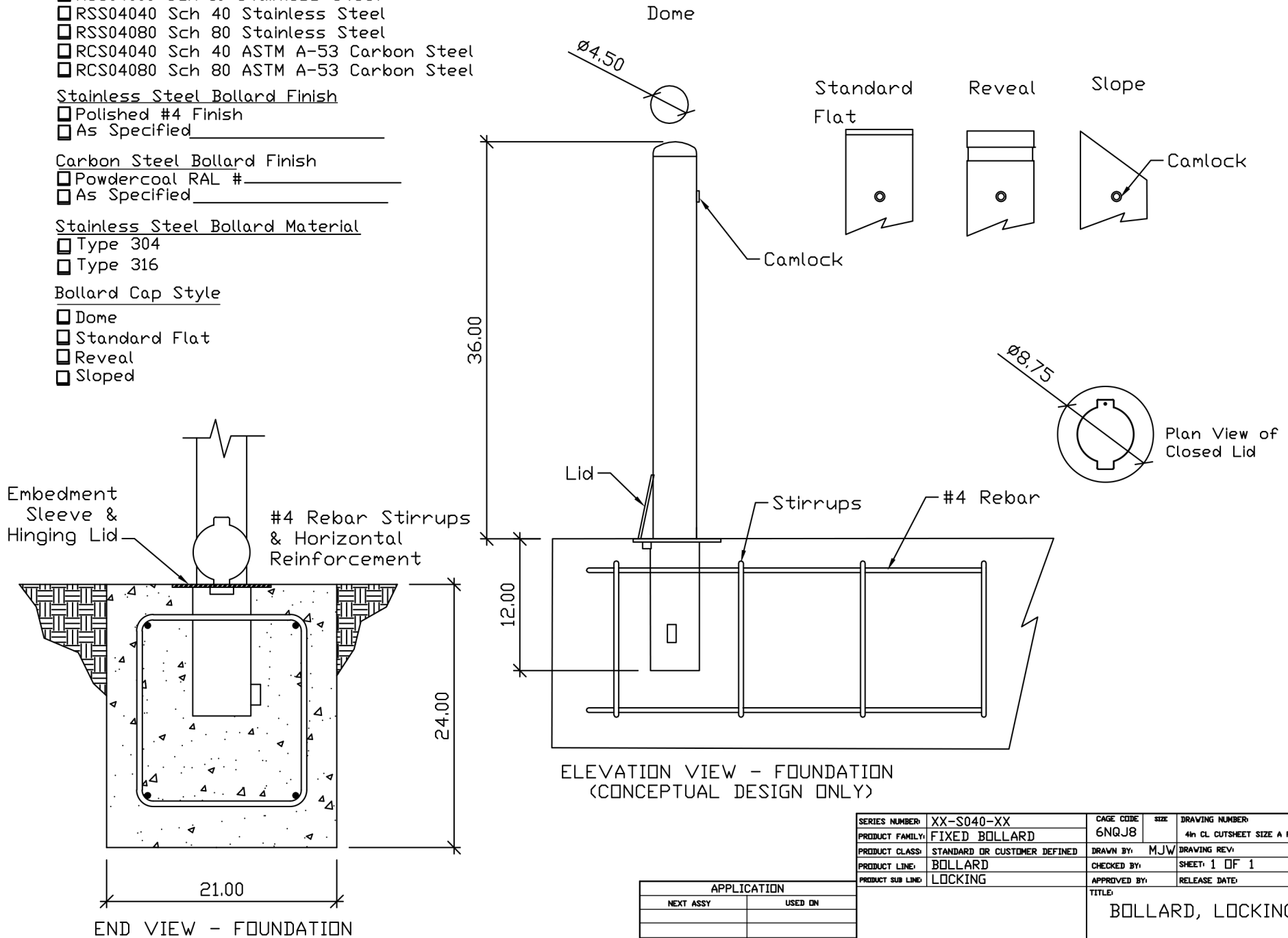
Stainless Steel Bollard Material

- Type 304
- Type 316

Bollard Cap Style

- Dome
- Standard Flat
- Reveal
- Sloped

REVISIONS			
LTR	DESCRIPTION	DATE	APPVD



ELEVATION VIEW - FOUNDATION
(CONCEPTUAL DESIGN ONLY)

SERIES NUMBER:	XX-S040-XX	CAGE CODE:	6NQJ8	SIZE:	4th CL CUTSHEET SIZE A FORM	DRAWING NUMBER:	
PRODUCT FAMILY:	FIXED BOLLARD	DRAWN BY:	MJW	DRAWING REV:			
PRODUCT CLASS:	STANDARD OR CUSTOMER DEFINED	CHECKED BY:		SHEET:	1 OF 1		
PRODUCT LINE:	BOLLARD	APPROVED BY:		RELEASE DATE:			
PRODUCT SUB LINE:	LOCKING	TITLE: BOLLARD, LOCKING					

APPLICATION	
NEXT ASSY	USED ON