



LARGE DEEP CYCLE AUTO OR MARINE BATTERY BOX (NO BATTERY INCLUDED)

INSTRUCTIONS

NOTE:

THIS KIT DOES NOT COME WITH A BATTERY. It will hold (1) 12v deep cycle auto or marine battery and up to a group 27 battery.

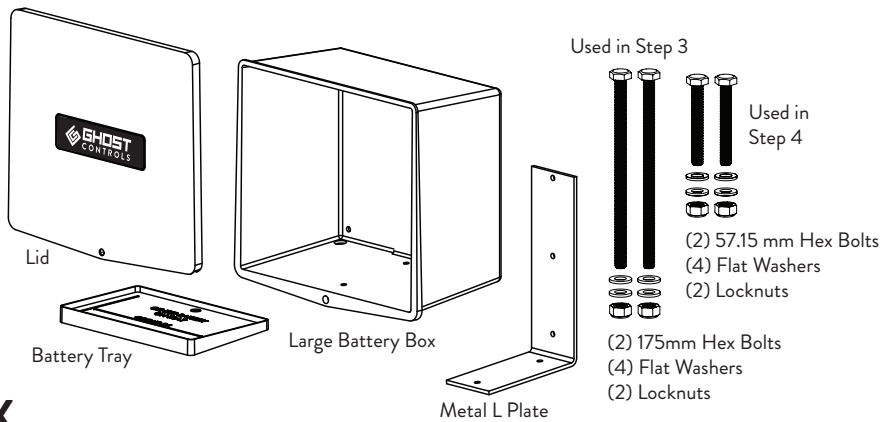
TIPS FOR INSTALLATION:

GHOST CONTROLS® does not recommend splicing the battery harness wire to extend its length. Battery Box should be mounted next to (or close to) control box so that battery harness can connect into main system control board through the strain relief. Battery Box should be mounted at least one foot above ground to avoid any standing water or snow and to prevent damage from landscaping equipment such as string trimmers or lawn mowers.

The included mounting bolts are designed to be installed into wood or metal posts. If you are installing onto a post or column made of material other than wood or metal, you must replace the bolts with appropriate mounting bolts (not included).

WHATS INCLUDED:

Kit comes assembled. Below shows the parts once disassembled.



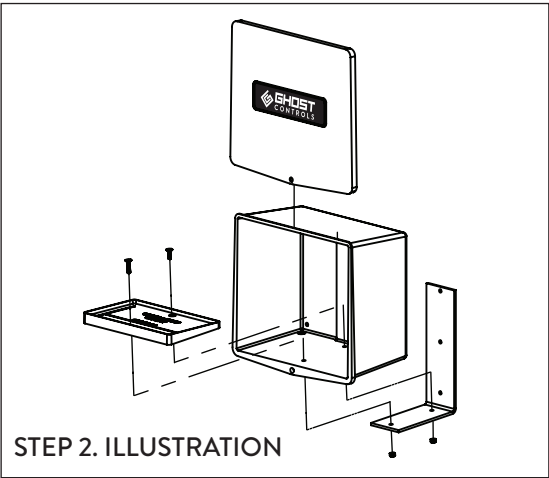
INSTALLING YOUR BATTERY BOX

STEP 1: PLAN YOUR INSTALLATION LOCATION

The Large Battery Box Kit must be located within 3 feet of control box and we recommend mounting this box at least 1 foot from the ground to a solid object such as a 4x4 or 6x6 post.

STEP 2: DISASSEMBLE THE BATTERY BOX

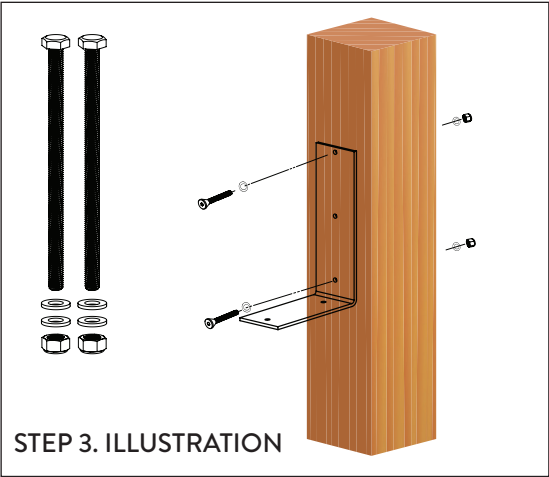
Take lid off. Unbolt the battery tray and Metal L Plate connected into the battery box. Please refer to the top illustration whats included for all the parts included in this battery box.



STEP 3: MOUNT THE BACK OF THE METAL L PLATE TO A POST

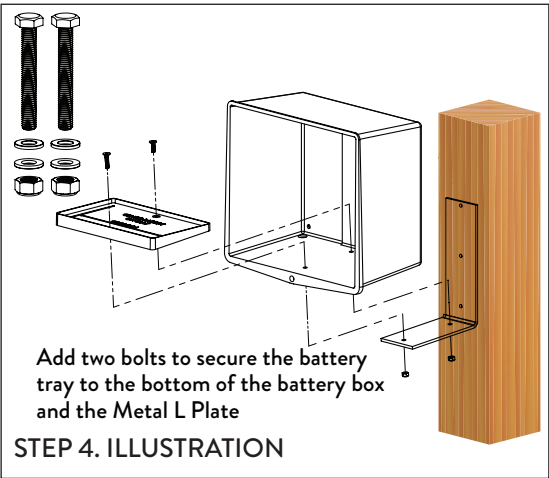
Line up the Metal L Plate to the post. Drill two holes into the post, and secure the Metal L Plate to the post with the supplied long bolts (2), washers (4) and locknuts (2). Make sure bolts are tight.

NOTE: If you are not mounting to a 4x4 or 6x6 post additional hardware may be required and not included.



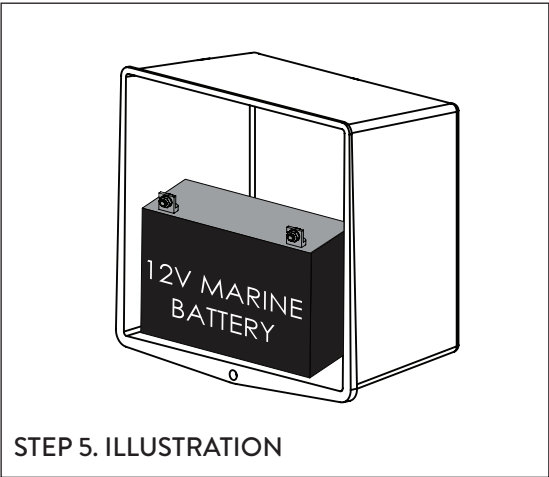
STEP 4: INSTALL BATTERY TRAY INSIDE BOTTOM OF THE BATTERY BOX AND BOTTOM PART OF METAL L PLATE

use the remaining 2 smaller bolts, washers and locknuts to secure the battery tray to the bottom of the large battery box and to the bottom of the metal L Plate. Make sure bolts are tight.



STEP 5: INSTALL THE BATTERY IN THE BATTERY BOX

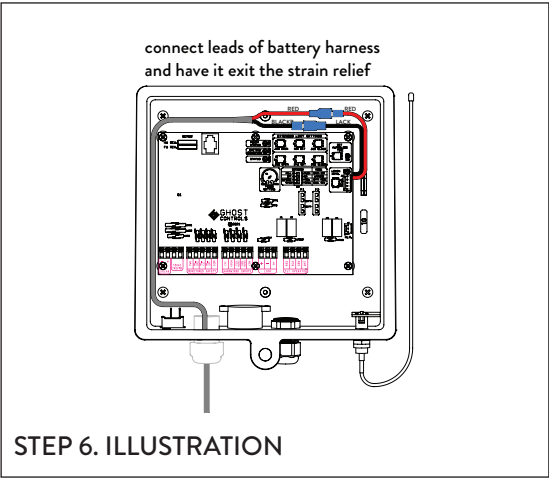
Place your 12V deep cycle auto or marine battery into the battery tray inside the battery box.



STEP 5. ILLUSTRATION

STEP 6: TURN POWER OFF ON THE CONTROL BOARD AND CONNECT BATTERY WIRES TO CONTROL PANEL

Turn the power switch to the GHOST CONTROLS® system control box to the off position before making connections. Connect the two bullet connectors from the battery box harness to the bullet connectors of the main system control board. Feed the battery harness through the bottom strain relief in the Ghost Controls® control box.

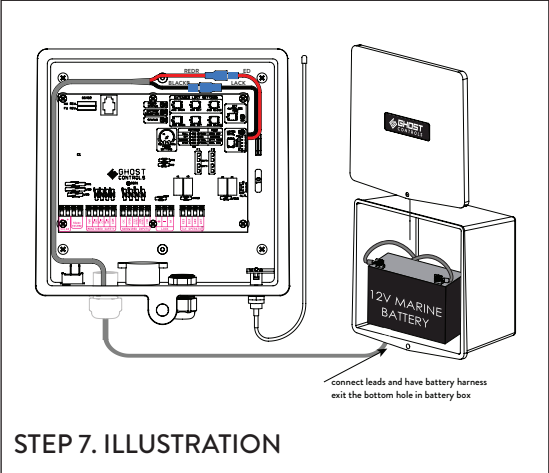


STEP 6. ILLUSTRATION

STEP 7: CONNECT THE 12V BATTERY IN THE LARGE BATTERY BOX

Make sure to check for the proper polarity of wires. Red connector goes on positive battery terminal first and black connector goes on negative terminal of battery. Once connected ensure all connections are secured and tight.

- 1) Connect the positive (+) lead from the battery harness to the positive lead on the battery
- 2) Connect the negative (-) lead from the battery harness to the negative lead on the battery



STEP 7. ILLUSTRATION

STEP 8: FINISH WITH INSTALLING THE BATTERY BOX LID TO PROTECT BATTERY FROM WEATHER

STEP 9: TURN ON MAIN SYSTEM CONTROL BOX

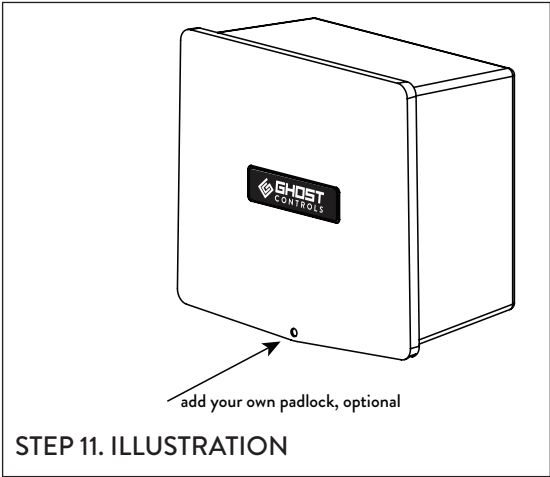
Turn the main system toggle power switch located at the bottom of system control box to the on position.

STEP 10: TEST THE SYSTEM

Test the system with your working remote, keypad or pushbutton to see if gate has power.

STEP 11: LOCK THE BATTERY BOX (OPTIONAL)

You can purchase (locally) an optional padlock to lock your battery box.



STEP 11. ILLUSTRATION

WARRANTY:

GHOST CONTROLS Battery Boxes are warrantied for 18 months with proof of purchase. See warranty terms on www.ghostcontrols.com/warranty.

For more information on GHOST CONTROLS® Automatic Gate Openers and Accessories please visit our website at www.ghostcontrols.com.



WARNING: This product can expose you to chemicals including lead, which is known to the State of California to cause cancer. For more information, go to www.P65Warnings.ca.gov



Made in China, ABBLIM | Rev. 2023-07
©2023 GHOST CONTROLS®