

# AXWV WIRELESS VEHICLE SENSOR

## OVERVIEW

**⚠ WARNING: DO NOT USE THIS DEVICE WITH LIVESTOCK OR OTHER ANIMALS.**

**NOTE: THIS VEHICLE SENSOR ONLY WORKS WITH GHOST CONTROLS OPENER SYSTEMS.**

PLEASE READ THE INSTRUCTIONS INCLUDED WITH THIS ITEM PRIOR TO INSTALLING.

## IMPORTANT ITEMS REQUIRED

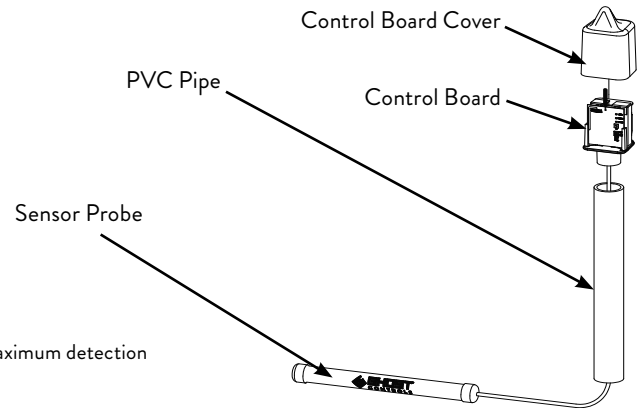
Two (2) C Alkaline Batteries are required and **not included**. One (1) Ghost Controls Transmitter that already operates the gate.

## KIT CONTENTS:

- 1 - Control Board Cover with control board (to be installed above ground)
- 1 - Sensor Probe with 10 foot cable (to be buried below ground)
- 1 - 12" PVC Pipe

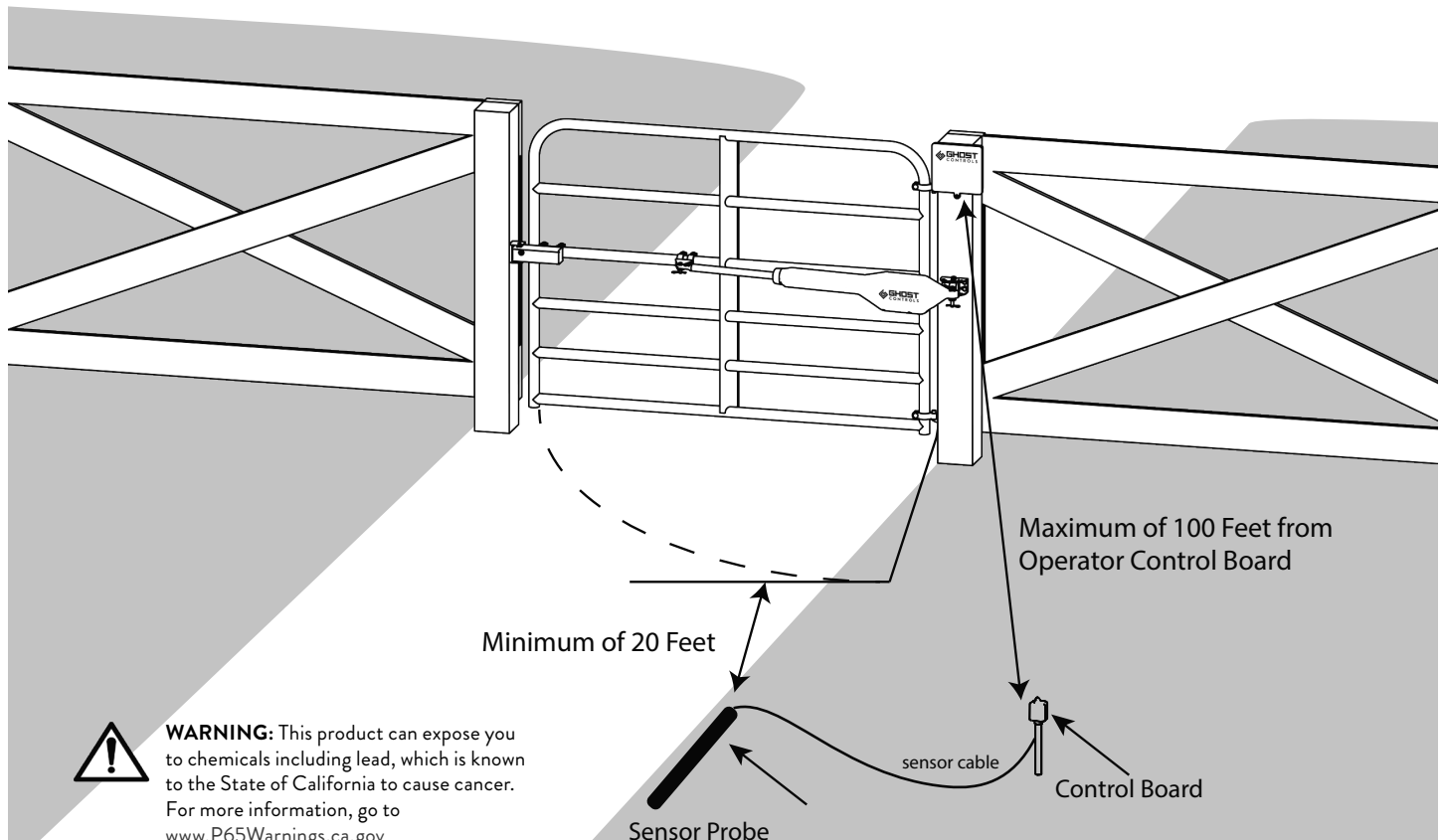
## PREPARING FOR INSTALLATION:

- Must be located at least 20 feet beyond the path of the moving gate.
- Must be located where the driver of the approaching vehicle has clear view of the gate.
- Bury Sensor Probe approximately 12" deep and as close to the driveway as possible for maximum detection of moving vehicles.
- The Control Board must be at least 6" above ground.
- The Control Board also should be with 100 feet of the Ghost Controls receiver/control box.



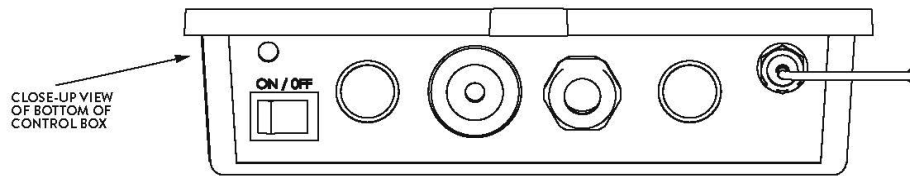
## NOTE

The operating distance may vary depending on Radio Frequency interference at each installation site. Avoid installing the sensor near power lines, transformers or running motors.



## 1. SETTING UP YOUR WIRELESS VEHICLE CONTROL BOARD\*:

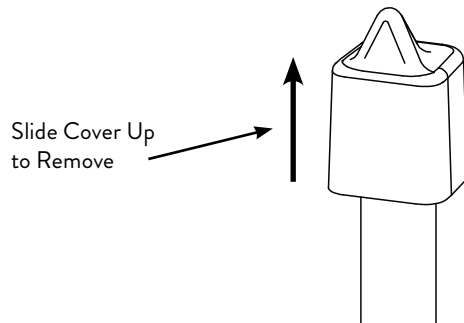
BEFORE CONTINUING MAKE SURE YOUR GATE IS CLOSED. TURN THE GATE OFF BY TURNING THE SWITCH TO THE OFF POSITION ON THE BOTTOM OF THE CONTROL BOX.



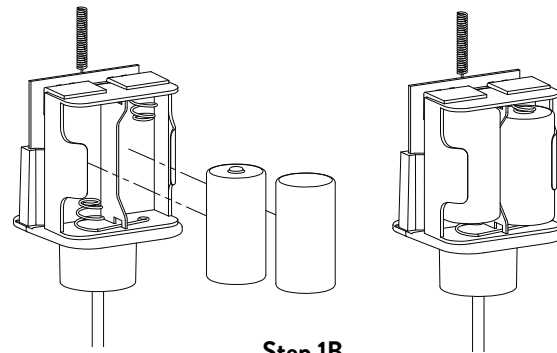
\*The following steps can be performed indoors BEFORE digging and burying the Sensor Probe.

A. Remove the cover on Control Board by sliding the outer black cover upward to access the Control Board and battery holder.  
**Shown below in Step 1A.**

B. Insert/Install two C batteries (not included) into the battery holder with correct polarity aligned.  
**Shown below in Step 1B.**



Step 1A



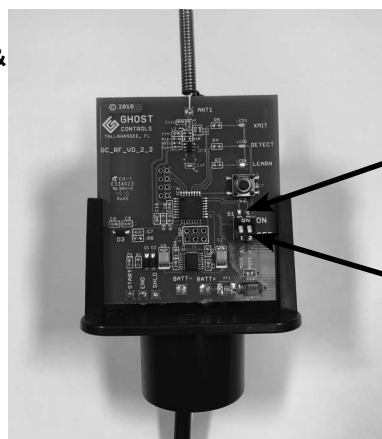
## 2. TEACHING THE TRANSMITTER TO THE WIRELESS VEHICLE CONTROL UNIT BOARD:

BEFORE CONTINUING, MAKE SURE YOUR TRANSMITTER IS ALREADY CAPABLE OF OPENING THE GATE.

A. On Control Board, press and hold the button below the "LEARN" LED light until the RED "LEARN" LED light is on.  
**(Example 2A)**

B. Release the button, the RED "LEARN" LED should remain ON indicating it is in "LEARNING" mode and waiting for the signal from the transmitter.

Step 2A & Step 2B

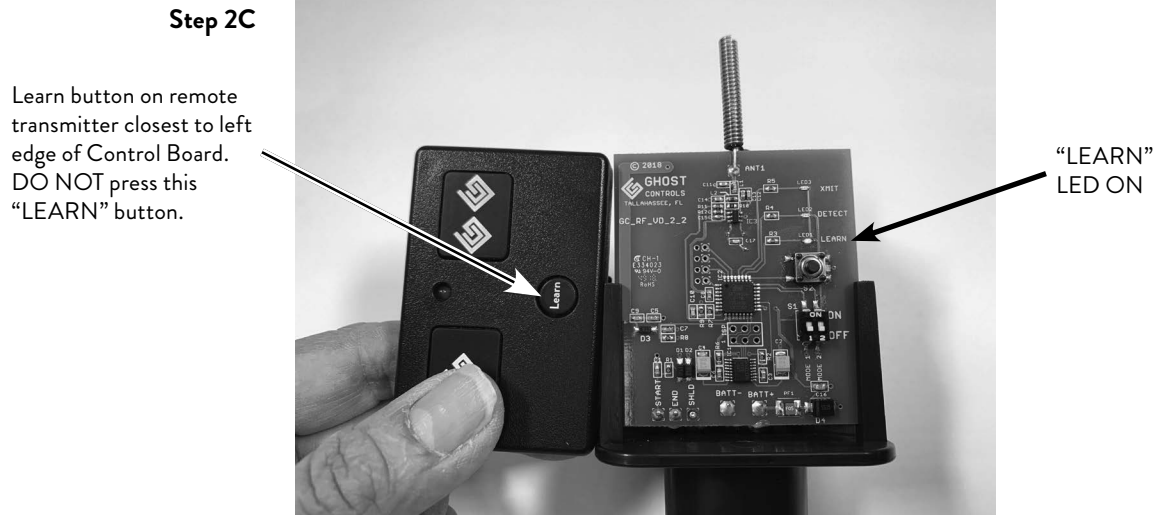


PRESS and HOLD Learn button on Control Board until RED LED light turns on and remains solid on.

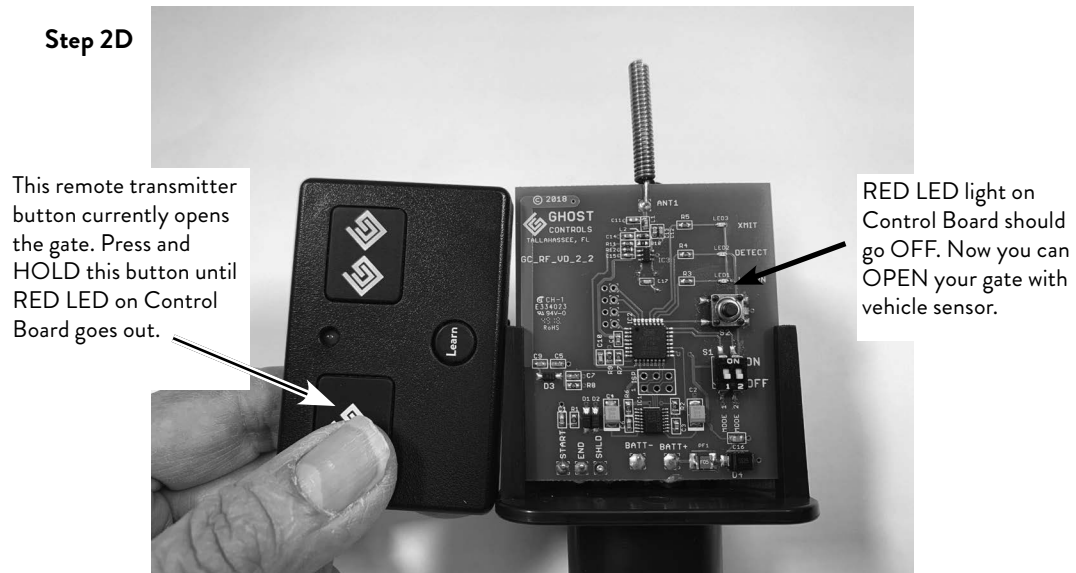
### NOTE

The Control Unit will automatically exit "LEARNING MODE" after 60 seconds if no valid signal from Remote Transmitter is detected.

C. Place the transmitter next to Control Board on left side with the remote transmitter LEARN button located closest to the left side of the Control Board. (Shown below, Step 2C)



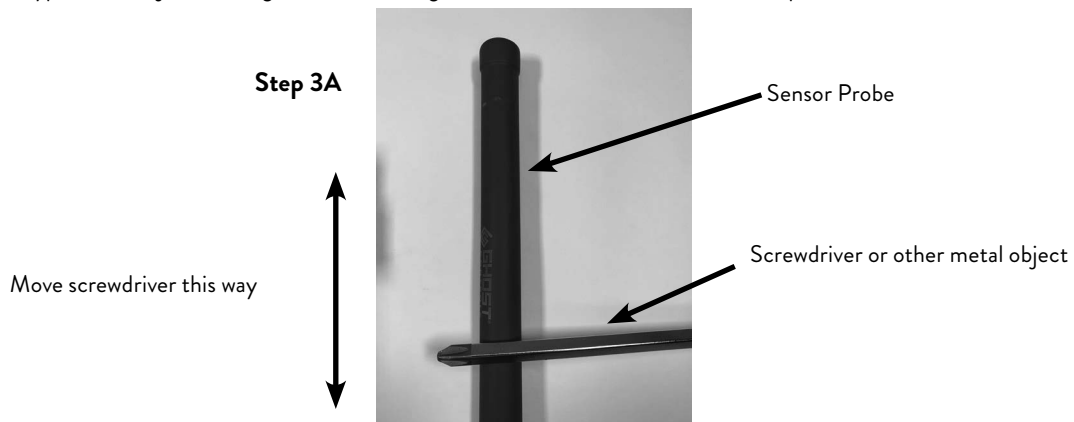
D. On the transmitter, PRESS and HOLD DOWN the button on remote transmitter (typically the large button with the single GC logo) that controls the gate. (Shown below, Step 2D)



E. The RED "LEARN" LED on the Control Board should go OFF indicating the signal is "LEARNED".

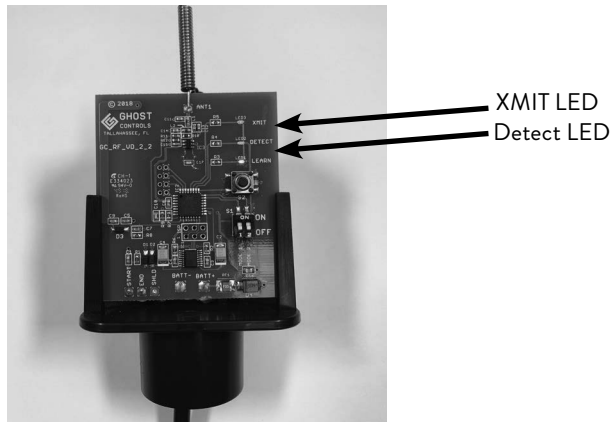
### 3. TESTING THE SENSOR PROBE:

A. Move some type of steel object like a large screw driver along the vehicle sensor (as shown below in Step 3A).



- B. Observe that the yellow “DETECT” LED turns ON and the green “XMIT” LED is blinking for 1 second. (Shown in Step 3B.) This LED sequence indicates that the Vehicle Sensor has detected the metal and is transmitting.

**Step 3B**



**4. INSTALLING YOUR WIRELESS VEHICLE SENSOR PROBE AND CONTROL BOARD (REMOVE THE (2) C SIZE BATTERIES FOR THIS STEP):**

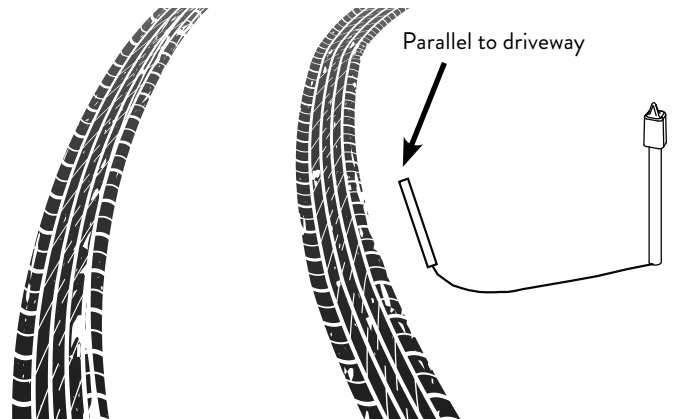
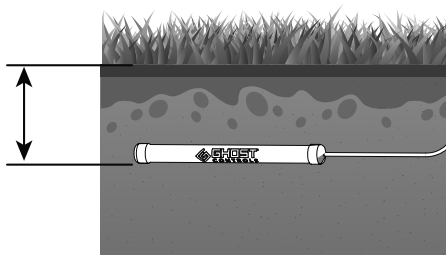
**PLAN YOUR INSTALLATION LOCATION FOR THE BEST RADIO FREQUENCY RANGE**

- A. Make sure your gate is in the CLOSED POSITION and opener is OFF to avoid accidental opening of the gate.
- B. Complete steps 1–3 as shown previously.
- C. Measure and lay the sensor probe on the ground, next to driveway, and at least 20 feet from the open edge of the gate. We recommend placing sensor probe closest to side of driveway that vehicle exits. Prop up the PVC Pipe that holds the Control Board at least 6" above ground.
- D. INSTALL C BATTERIES INTO THE BACKSIDE OF THE CONTROL BOARD** and wait for the LEDs to stop blinking before continuing.
- E. Make sure there are no vehicles or steel or metal objects near the sensor probe. Turn the gate opener system on.
- F. Move a steel object over the sensor probe (repeating Step 3A) **OR** press and quickly release the push button on the Vehicle Sensor Control Board to send the “OPEN” signal to the gate.
- G. The green “XMIT” LED on the Vehicle Control Board will start blinking rapidly and the yellow “DETECT” LED will stay lit for 1 second to indicate that the “OPEN” signal is being sent.
- H. The gate should open when it receives the signal from the wireless vehicle sensor.
- I. Once the desired location is located, **REMOVE THE BATTERIES FROM THE BACKSIDE OF THE CONTROL BOARD BEFORE PROCEEDING.**

**DIG A TRENCH FOR THE SENSOR PROBE AND WIRE:**

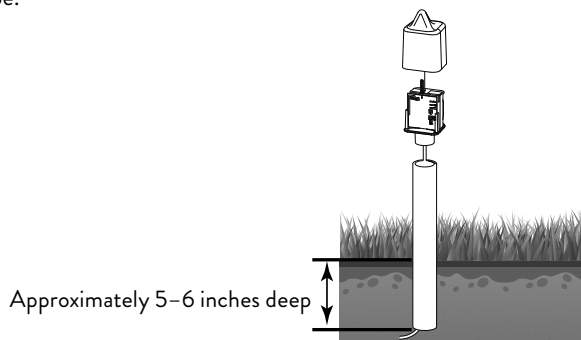
- A. Dig a trench approximately 12" deep to bury the Sensor Probe. In most cases, the sensor should lie in trench horizontally and parallel to the driveway.
- B. Dig a trench to bury the wire between the Sensor Probe and the PVC Pipe that holds the Control Board and Batteries.

Dig trench approximately 12 inches deep and parallel to ground surface



## DIG A HOLE FOR THE PVC PIPE THAT HOLDS THE CONTROL BOARD AND BATTERIES:

A. Dig a hole 5"–6" **deep** for the PVC Pipe.



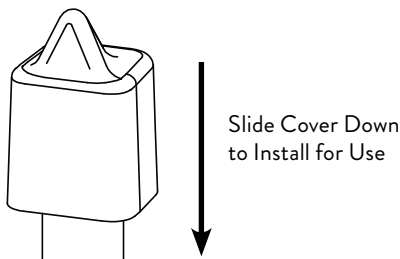
B. Optional: Rebar can be used as additional stability and support for the PVC Pipe and Control Unit.

### NOTE

Gate should be closed before proceeding to Step 5. If not, close the gate before continuing.

## 5. MAKE SURE GATE IS TURNED ON AND TEST THE SENSOR BY DRIVING YOUR VEHICLE DOWN THE DRIVEWAY:

- INSTALL THE C-SIZED BATTERIES BACKSIDE OF THE CONTROL BOARD and observe that ALL LED's turn ON for 1 second then turn off.
- Once sensor calibrates for 3 minutes then slowly drive past the Sensor Probe and verify that the Wireless Vehicle Sensor opens the gate.
- Reinstall the cover for the Control Board.

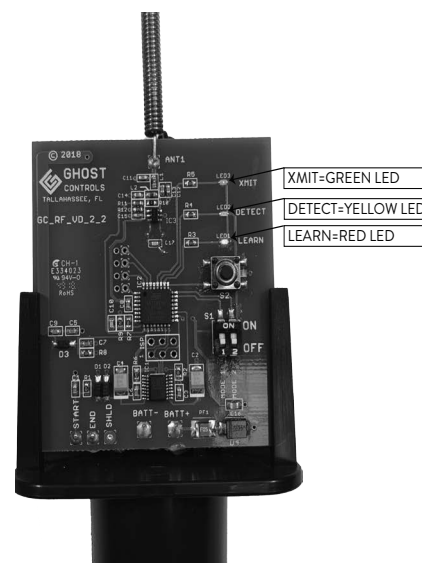


## 6. FILL IN THE TRENCH AND HOLE:

- After verifying that the vehicle sensor is functioning properly, TURN OFF the gate opener because a moving shovel can trip the sensor and open your gate.
- Fill in the trenches and the hole with dirt.
- Turn on the gate opener. Operate the gate normally.
- Check condition of batteries several times throughout the year and replace batteries as needed.

## GUIDE TO LEDS

XMIT (Green Led)	DETECT (Yellow Led)	LEARN (Red Led)	MODE	DESCRIPTION
ON	ON	ON	POWER ON RESET	All LEDs will be ON for 1 second when batteries are inserted.
OFF	ON	OFF	CALIBRATING	Yellow and RED LEDs will be alternating (Yellow=ON, Red=OFF or Yellow=OFF, Red=ON) while unit is calibrating.
	OFF	ON		
OFF	OFF	ON	LEARN TRANSMITTER	Red LED is ON when LEARN button is pressed for 3 seconds. Unit is in LEARN TRANSMITTER mode and awaiting transmitter signal. Red LED will turn off once the transmitter signal is learned or 60 seconds has elapsed.
OFF	ON	OFF	DETECTED	Yellow LED is ON for ~3 seconds when "moving vehicle" is detected. Transmitting to follow. NOTE: Pressing and releasing the LEARN button will simulate vehicle detection.
BLINKING	ON	OFF	TRANSMITTING	Green LED is blinking for ~3 seconds when unit is transmitting OPEN command to Ghost Controls receiver.



- This device complies with Part 15 of the FCC Rules. Operation is subject to the following two conditions:
- This device may not cause harmful interference
- This device must accept any interference received, including interference that may cause undesired operation.

## WARNING

Changes or modifications to this unit not expressly approved by the party responsible for compliance could void the user's authority to operate the equipment.



## NOTE

This equipment has been tested and found to comply with the limits for a Class B digital device, pursuant to Part 15 of the FCC Rules. These limits are designed to provide reasonable protection against harmful interference in a residential installation. This equipment generates, uses and can radiate radio frequency energy and, if not installed and used in accordance with the instructions, may cause harmful interference to radio communications. However, there is no guarantee that interference will not occur in a particular installation.

## WARRANTY:

GHOST CONTROLS® Wireless Vehicle Sensors are warrantied for 18 months with proof of purchase. An additional 6 month warranty is available at NO COST if you register your product within 30 days of purchase on [ghostcontrols.com/register](https://ghostcontrols.com/register). See warranty terms on [ghostcontrols.com/warranty](https://ghostcontrols.com/warranty).

For more information on GHOST CONTROLS® Automatic Gate Openers and Accessories please visit our website at [ghostcontrols.com](https://ghostcontrols.com).

