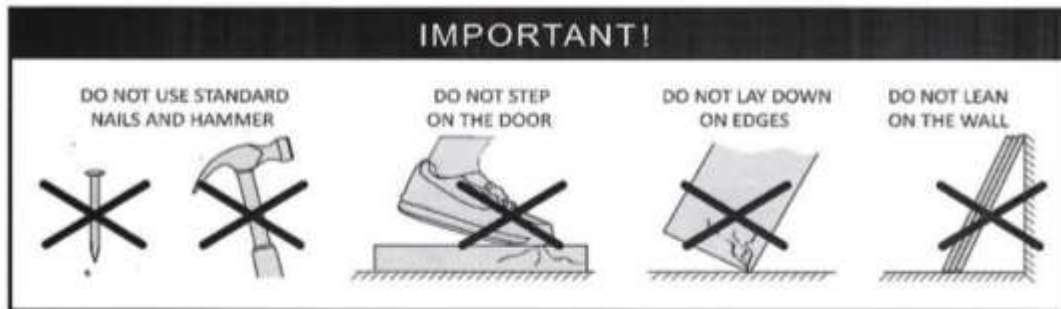


Installation Instructions for Residential Interior Pre-hung & Invisible Doors

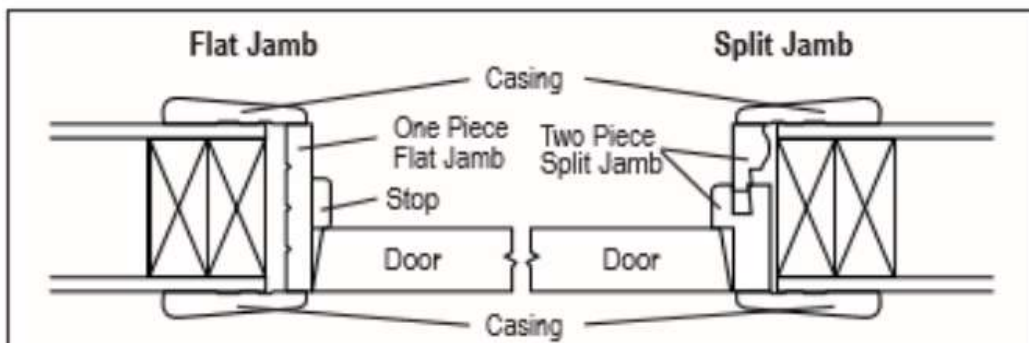
Before you begin

Remove the packaging and take the following precautions with the door:

1. Pre-hung interior doors can be installed immediately. If you do not install it immediately, store your door flat on a level surface, in a clean, dry, well-ventilated area.
2. Avoid excessive warping or drying. Do not store or install your pre-hung door in a damp or freshly dry-walled building. Keep the door at least 10 feet away from heating registers, and away from direct sunlight.
3. Handle your pre-hung door with clean hands or gloves and lift rather than drag it. The precautions you take now will make finishing and installation much easier later. (Consult your retailer for information on finishing instructions.)



All parts are seen in position in this horizontal section drawing. Note that the hinge pin protrudes about 1/8" beyond the door; there are both left-hand and right-hand hinges for doors that open from either the left or the right. Doorstops fit snugly against the closed door (they are installed with the door in the closed position). The casing is set back slightly from the edge of the jamb to allow removal of the hinge pin. The leading edge of the door is beveled to give the door clearance to swing without leaving a visible gap between the closed door and the jamb on the outside. Pre-hung doors come hinged to their jambs.



Tools Required

All you need is a hammer, Phillips screwdriver, 24" level, 24" framing square, nail set, wooden shims, 8d and 16d finish nails, putty knife, and wood filler.



Step 1. Remove packaging and inspect doors

Remove packaging:

Remove shipping materials such as corner covers, shipping blocks or pads.

Note: Be sure to remove the shipping clips or screws through the header into the slab from the door before beginning the installation.

Inspect door:

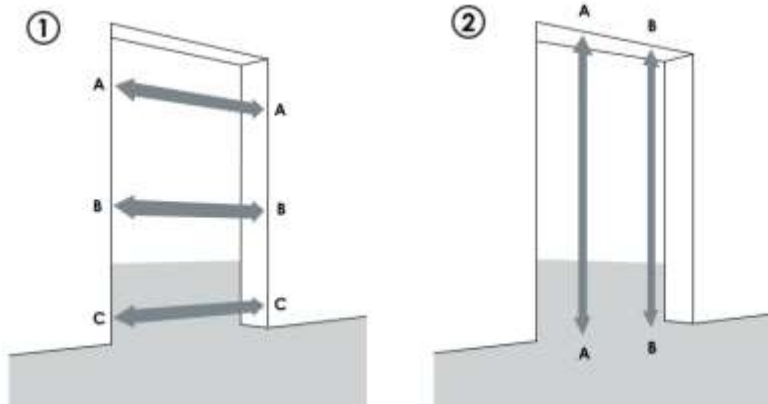
- When doors are received, they must be inspected immediately for quality, including correct product, correct size, machining, color, design, cosmetic damage, specie of veneer and finish, if apply.
- Product squareness (diagonal measurements must be within 1/4" difference).
- Correct Handing. To determine door swing (left or right), face the door from the side where hinges cannot be seen. Right-handed doors open to the right, while left-handed doors open to the left.

Step 2. Determine Rough Opening

Before you start, check to make sure that the rough opening is 1/2" wider than the unit width & 1/2" higher than the unit height. This will allow you to shim and square the door frame easily. Door casing will cover the gap between the rough opening & the door frame.

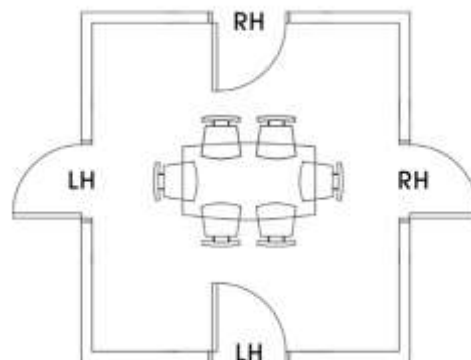
Stud Rough Opening (R.O.) Allowances		
Unit Dimensions	R.O. Width	R.O. Height
18" - 19-1/2" x 81-1/2"	20"	82"
24" - 25-1/2" x 81-1/2"	26"	82"
28" - 29-1/2" x 81-1/2"	30"	82"
30" - 31-1/2" x 81-1/2"	32"	82"
32" - 33-1/2" x 81-1/2"	34"	82"
34" - 35-1/2" x 81-1/2"	35"	82"
36" - 37-1/2" x 81-1/2"	38"	82"

Refer to the image below for precise instructions on measuring the rough opening. Begin by measuring the width between the studs on the entryway three times. In Picture 1, these measurements are indicated with arrowed lines labeled A, B, and C. Make sure to record the smallest width among the three measurements. Next, measure the height on both sides, as shown in Picture 2 with lines A and B. Record the smallest height measurement.



Step 3. Determine Door Swing Required

- When the door opens to you, and the knob is on the left, it is a left-hand door.
- When the door opens to you, and the knob is on the right, it is a right-hand door.



Step 4. Determine Door Type

Pre-hanging information. Difference between Door Slab, pre-hung and pre-hung frameless

1. Door Slab Only:

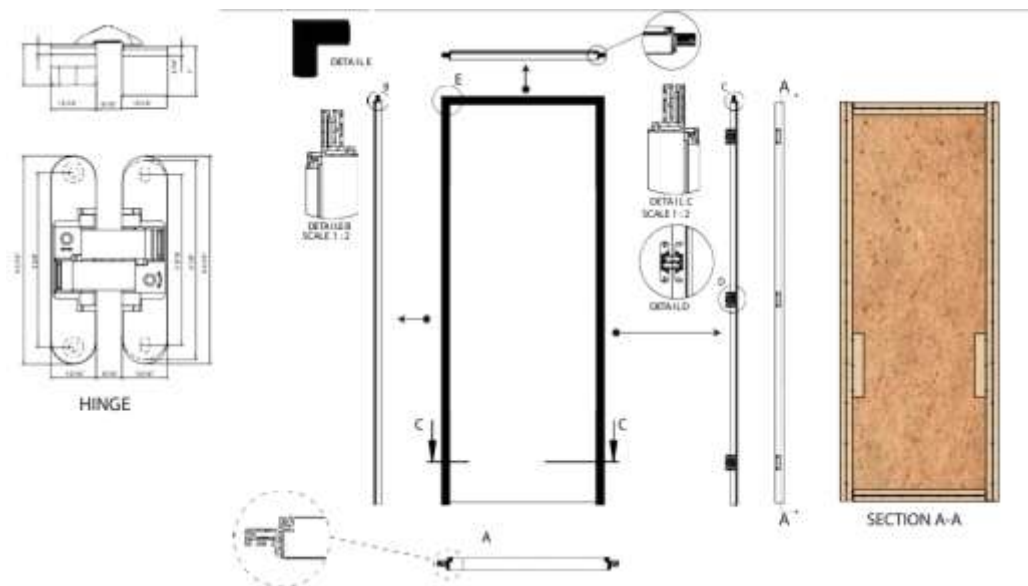
Door Slab ready for installation. A slab door is a basic economical choice, stripped-down door that does not include a frame. It is the responsibility of the installer to attach the slab door to an existing door frame or to create an entirely new door frame. **No Handle or deadbolt preparation. Frame, hardware, or hinges are not included.**

2. Pre-hung:

A door unit is a pre-assembled door ready for installation. Usually, Pre-hung doors are mortised for the hinges and predrilled for the handles. They included a matching door frame, door slab (with single bore preparation for lock set with size of 2-3/8 inches included), hinges, and casing (if necessary). They could be already assembled and hanging in its own frame (complete unit) or Knocked Down (RTA set Ready to Assembly) The door and casing have smooth white primed finish; ready to paint in a color of your choice. **The Door district** offers residential interior doors made high quality in our version pre-hung ready to install.

3. Invisible Door or Frameless:

Invisible doors are the elegant touch for modern interior spaces. One of the many qualities achieved with our sophisticated system of concealed (No casings and no visible frame from both sides) is the perfect continuity effect a wall-door unity (The door flush with the wall). We offer this product that comes with smooth white primed; ready to paint in a color or made the design of your choice. Our frameless doors are ready for installation, and are residential interior doors made of high-quality materials. Italian metal frame, Solid Core (Wood Particle Board) with 1-3/4" thickness (Construction feels more substantial and secure), assembled with 3 concealed hinges 7/8 inches, round Corners in US15 Color (satin nickel) by default. The door has a single pre-bored lockset opening for time savings and convenience specially made for magnetic door lock set. (Lock set sold separately) This product comes with smooth white primed; ready to paint in a color or made the design of your choice. Our doors are better resisting the impulse to bow or twist or flop around in the jambs. Your liability is lessened, and the project will be more successful, long term.



Step 5. Square and Plumb Rough Stud Opening with wood stick:

Make sure that the rough door opening is approximately 2" each side wide and 2.5" taller than the door that is being installed (only measure the door, not the door frame).

Make sure:

1. The threshold is level.
2. The hinge side of the rough opening is plumb.
3. The head is square to the hinge side of the rough opening.

Important step before placing the wood sticks:

Before positioning the wooden sticks, it is crucial to ensure precise alignment for the door to sit flush with the wall. Take the time to pre-drill the metal frame before installation, making certain there is equidistant spacing for a minimum of five screws.

Step 6. Attach wood stick:



The wooden sticks should be securely attached to the sides of the opening, keeping 1 1/8" (or as determined by the installer). This ensures proper alignment, making certain that the frame and the door will be flush with the wall upon installation.



After completing the preceding step, install the frame over the wooden sticks, ensuring it sits flush against the wall.

Step 7: Check the Level:

Verify that the door is level and make any required adjustments for a perfect fit. Once the ideal alignment is achieved, secure the screws on the hinge side to stabilize the door. Proceed to install screws on the opposite side of the door, ensuring levelness on both sides.

Step 8: Install the Handle

With the door securely in place, proceed to install the handle. If the handles was purchased with The Door District, then there will be guidance available for installation.

Step 9: Sheetrock and finish:

It will be the work of the installer to place the wood stick included with the door packaging to adjust where the door fit flush to the wall. Then there will have to be work done with the wall adding sheetrock between the wall and the frame. The process of finishing involves taping and mudding all the seams and screw holes produced. Taping over the seams between panels with paper or fiberglass tape and then finishing the seams and holes with drywall taping compound smooths the surface for primer and paint.