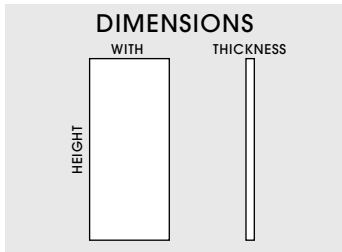


PRODUCT	KIT FRAMELESS SKY SOLID CORE
---------	------------------------------

PRESENTATION	UNIT-PREHUNG
--------------	--------------

SPECIFICATIONS

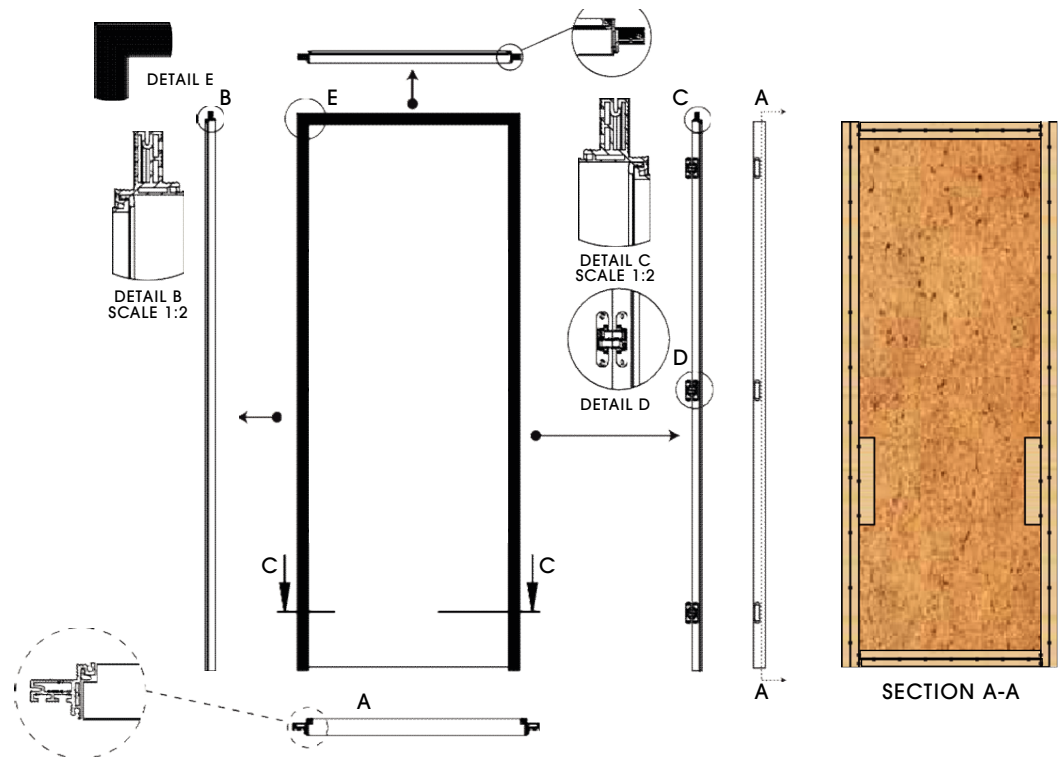
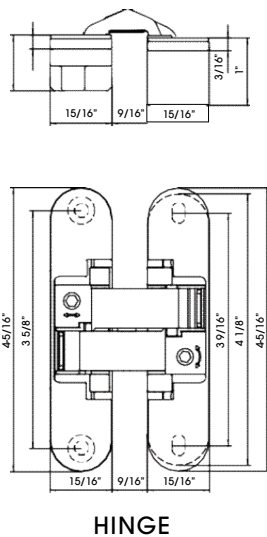


W	H	T	W	H	T	W	H	T
18"	80"	1 3/4"	18"	84"	1 3/4"	18"	96"	1 3/4"
24"	80"	1 3/4"	24"	84"	1 3/4"	24"	96"	1 3/4"
28"	80"	1 3/4"	28"	84"	1 3/4"	28"	96"	1 3/4"
30"	80"	1 3/4"	30"	84"	1 3/4"	30"	96"	1 3/4"
32"	80"	1 3/4"	32"	84"	1 3/4"	32"	96"	1 3/4"
34"	80"	1 3/4"	34"	84"	1 3/4"	34"	96"	1 3/4"
36"	80"	1 3/4"	36"	84"	1 3/4"	36"	96"	1 3/4"

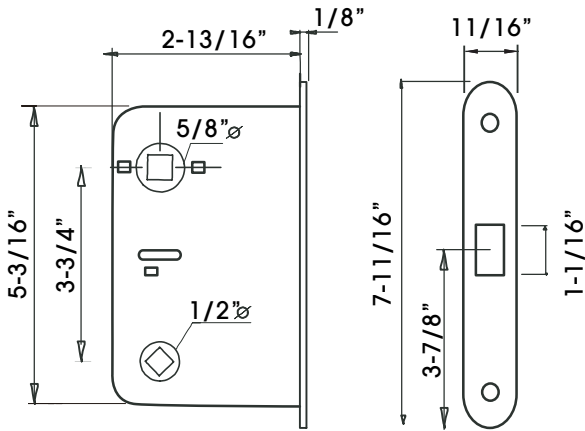
NAME	KIT FRAMELESS PRIMER SOLID CORE
------	---------------------------------

DOOR COMPOSITON

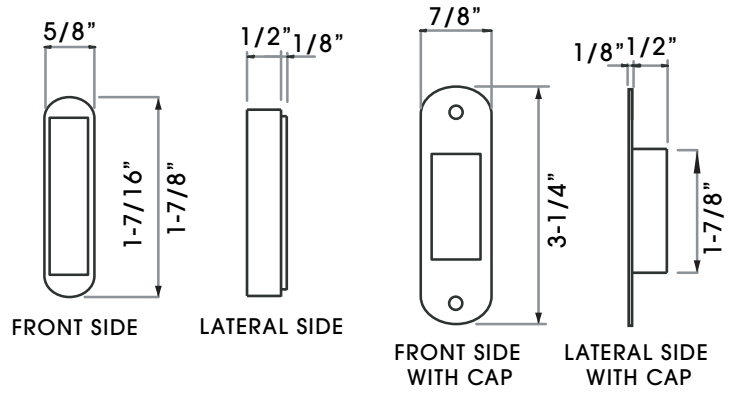
INTERNAL FRAME	Pinewood internal frames certified for humidity interior to 14% with lateral reinforcements for the lock on both sides.
CORE	80-90% soft wood - 1-2% hard wood - approx. 8% solid resin.
SKIN	Panel MDF (Medium Density Fiber).
FRAME	Made in Italy aluminum frames - 2" width - 1 3/4" depth - Includes rubber seal.
HINGES	Made in Italy concealed hinges.
FINISH	White Primer, Final painted.
PROCESS	The wooden internal frames are connected with galvanized staples to form the structure. The skin (MDF) is glued on to the internal frame via a pressing process.



DOOR LOCKS



DOOR LOCK

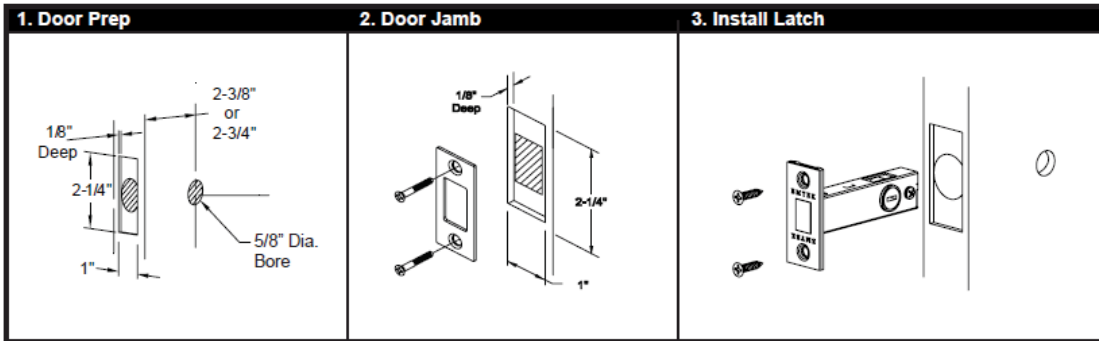


STRIKER

ITALIAN MAGNETIC LOCKS

EMTEK

Installation Guide for Mix Match Thumbturn Privacy Bolts



DEADBOLT EMTEK