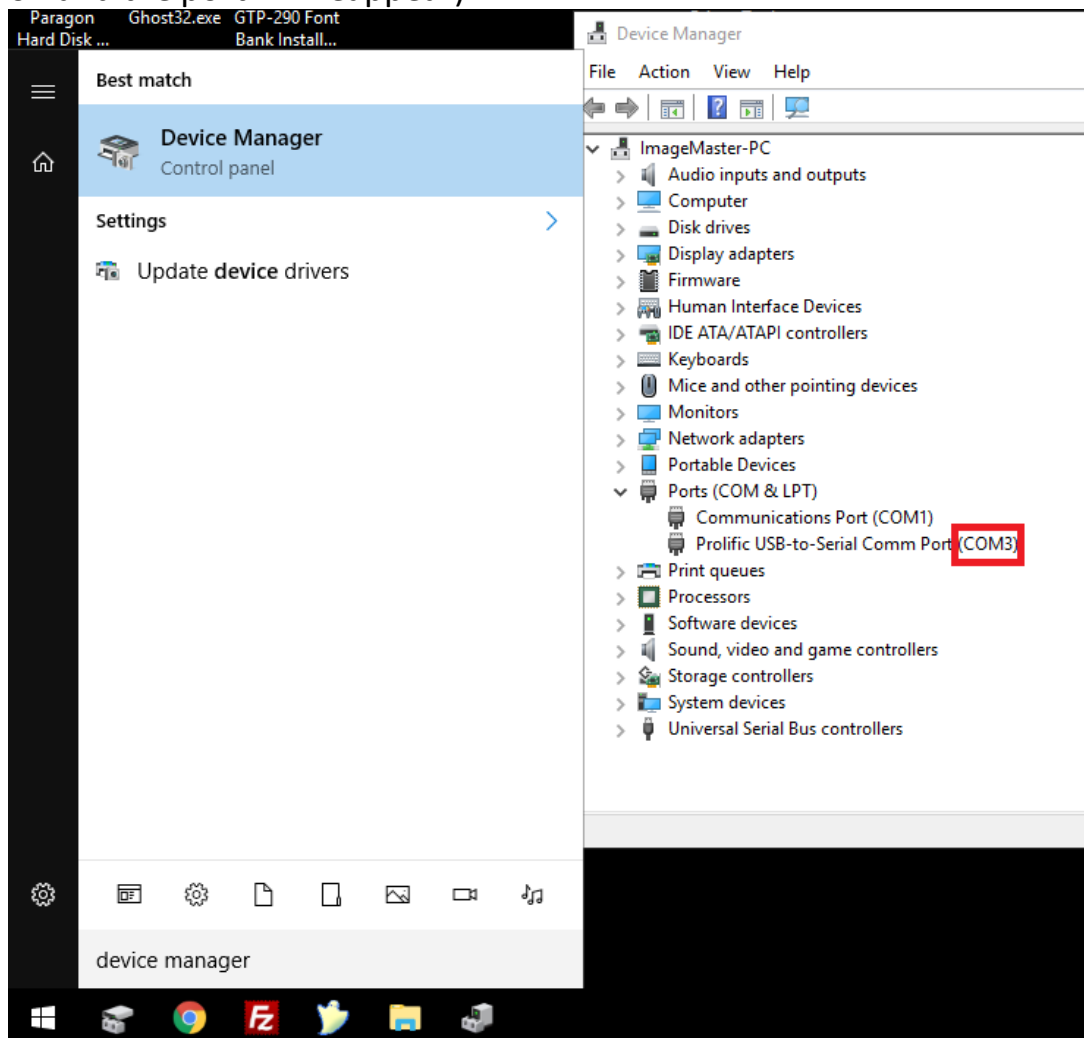


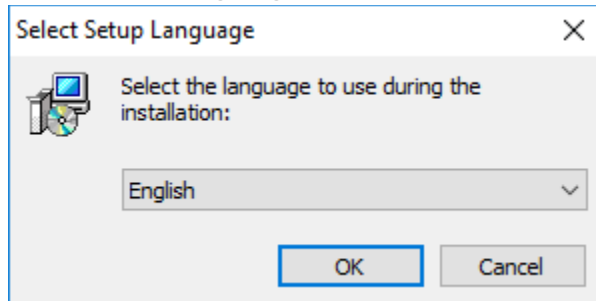
1. Make sure the printer is connected to power and USB and turned on
2. Click the Start menu and search **device manager** and open it
3. Click the **Ports** and check the **Prolific USB-to-Serial Comm Port (COM_)**
(Make note of the COM number at the end)
(To confirm you are looking at the correct port, you can turn the printer off and the port will disappear from the device manager, turn the printer on and the port will reappear)



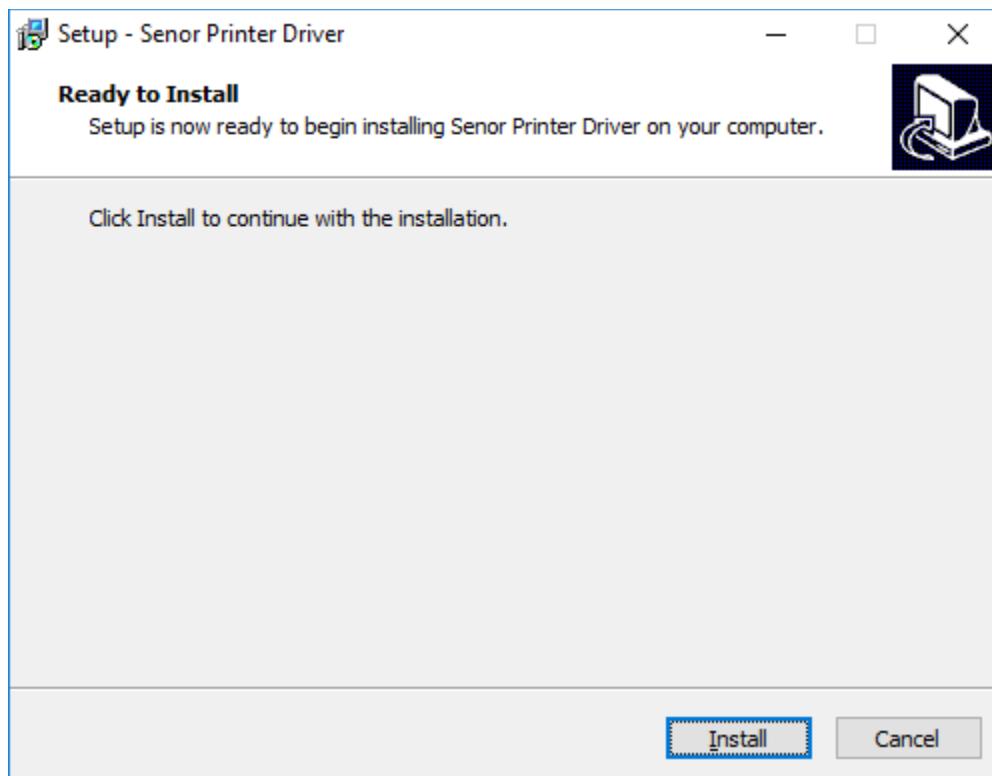
The Senior Building

65 & 67 Weaver Street P: +61 7 3275 5888
Coopers Plains QLD 4108 F: +61 7 3275 5800
Brisbane, Australia
support@senortech.com.au
www.senortech.com.au

4. Download the TP100 Printer driver from the below link.
<https://drive.google.com/uc?id=1PKzm1I5ghF8kyEjUyqLxPHLeftmK0xzm&export=download>
5. Once downloaded extract the files and run the installer.
6. Select the language and click OK



7. Click Install

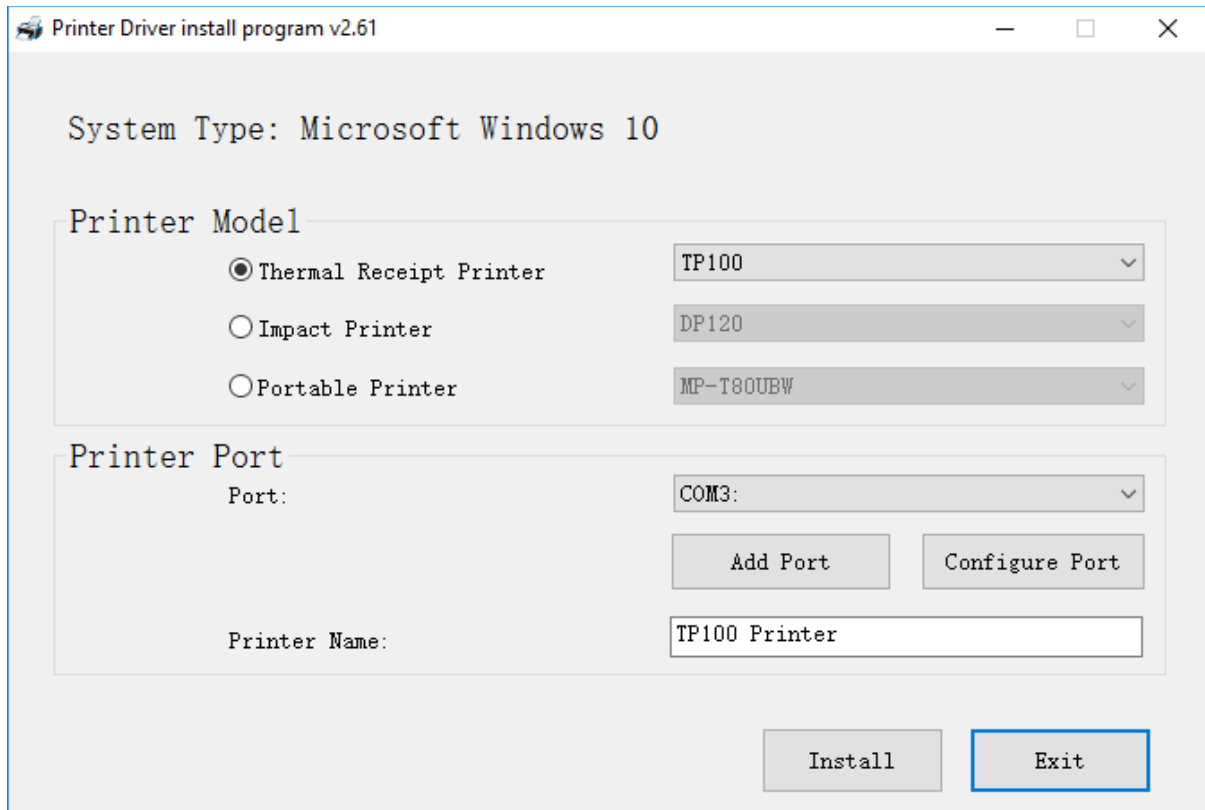


The Senor Building

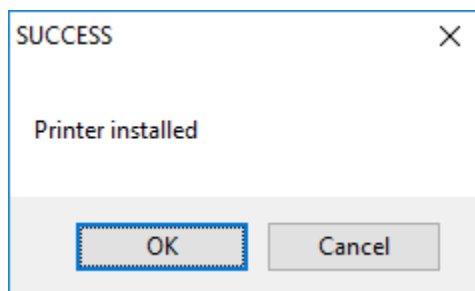
65 & 67 Weaver Street P: +61 7 3275 5888
Coopers Plains QLD 4108 F: +61 7 3275 5800
Brisbane, Australia
support@senortech.com.au
www.senortech.com.au



8. Select 'thermal receipt printer – TP100'
Select 'Port – COMX (with X being the number from step 3)'
Printer name can be set to anything
Click Install



9. Click OK

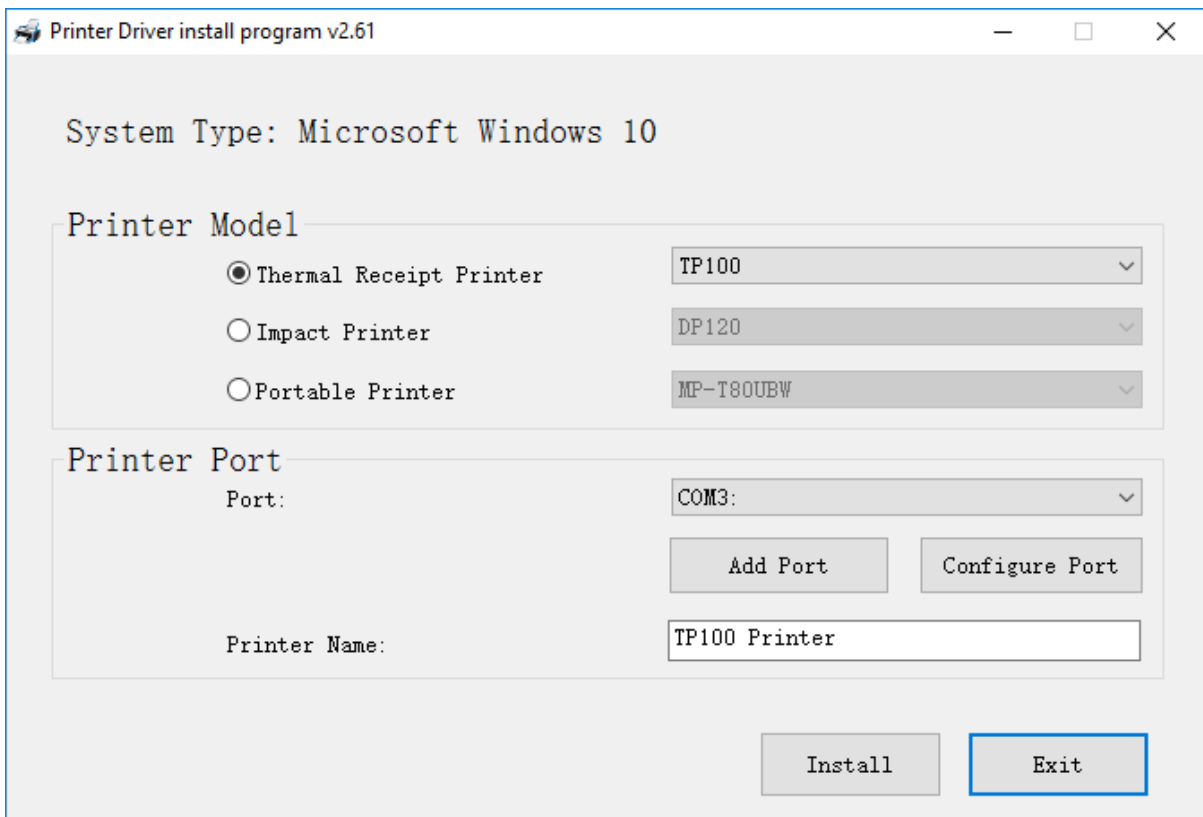


The Senor Building

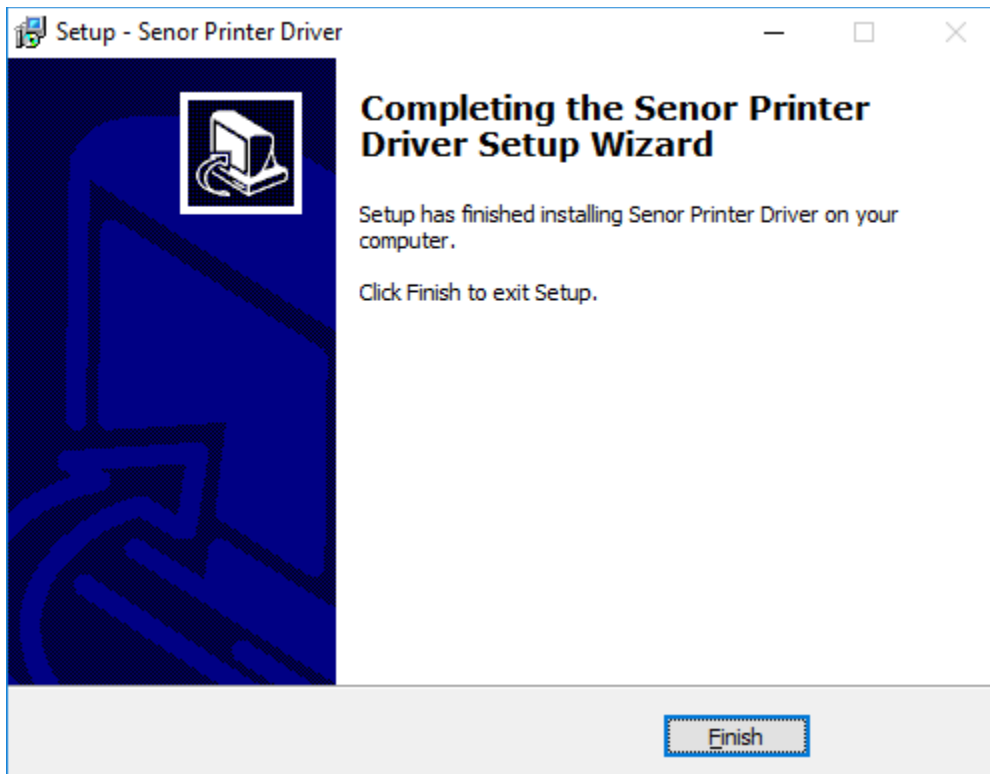
65 & 67 Weaver Street P: +61 7 3275 5888
Coopers Plains QLD 4108 F: +61 7 3275 5800
Brisbane, Australia
support@senortech.com.au
www.senortech.com.au



10. Click Exit



11. Click Finish

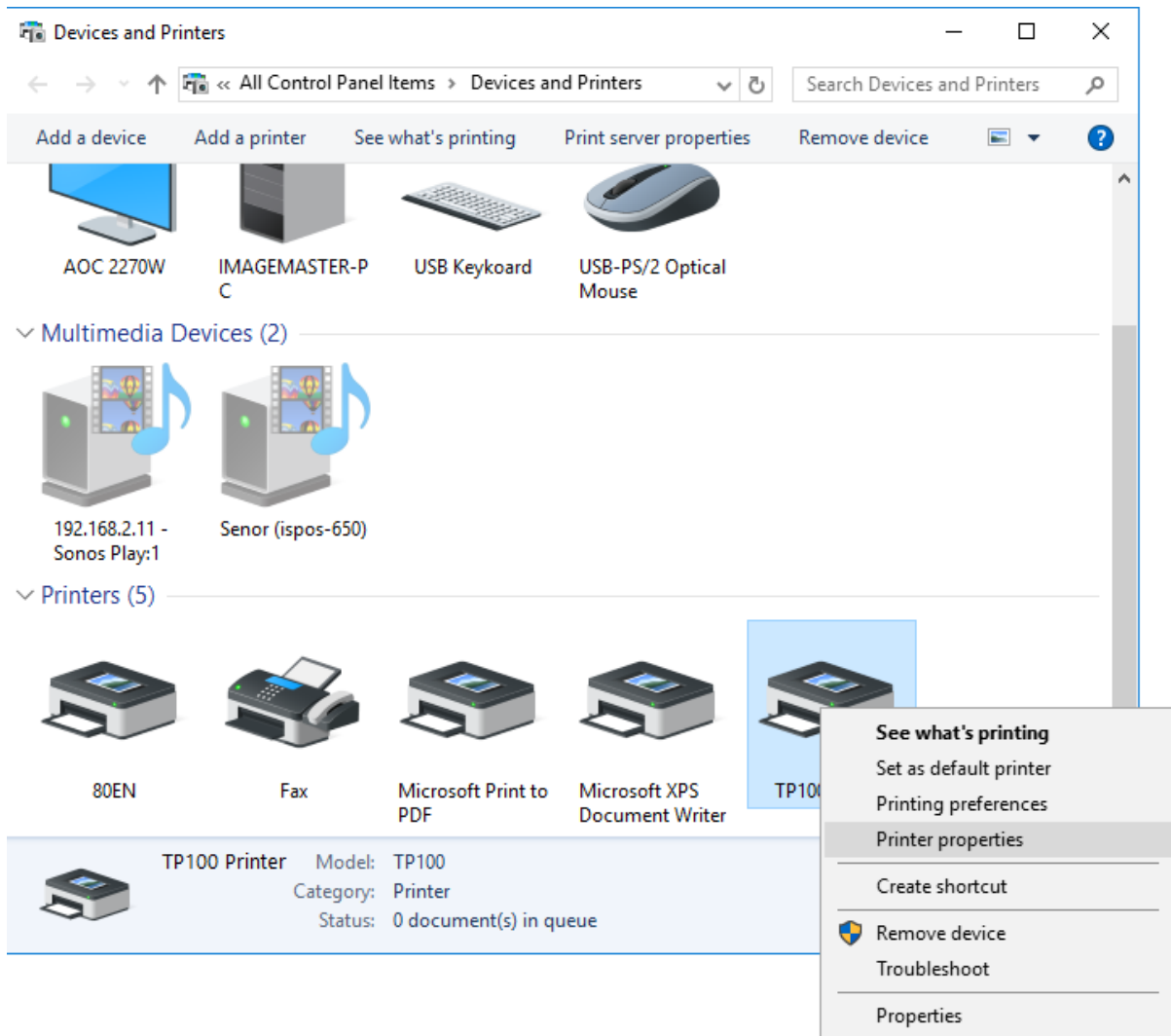


The Senor Building

65 & 67 Weaver Street P: +61 7 3275 5888
Coopers Plains QLD 4108 F: +61 7 3275 5800
Brisbane, Australia
support@senortech.com.au
www.senortech.com.au

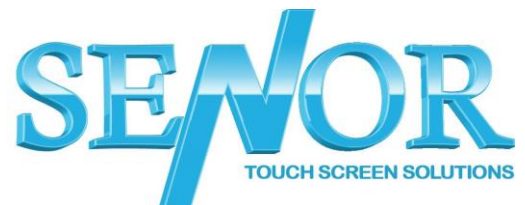


12. Open Control Panel – Devices and Printers Right Click the TP100 Printer and select Printer properties

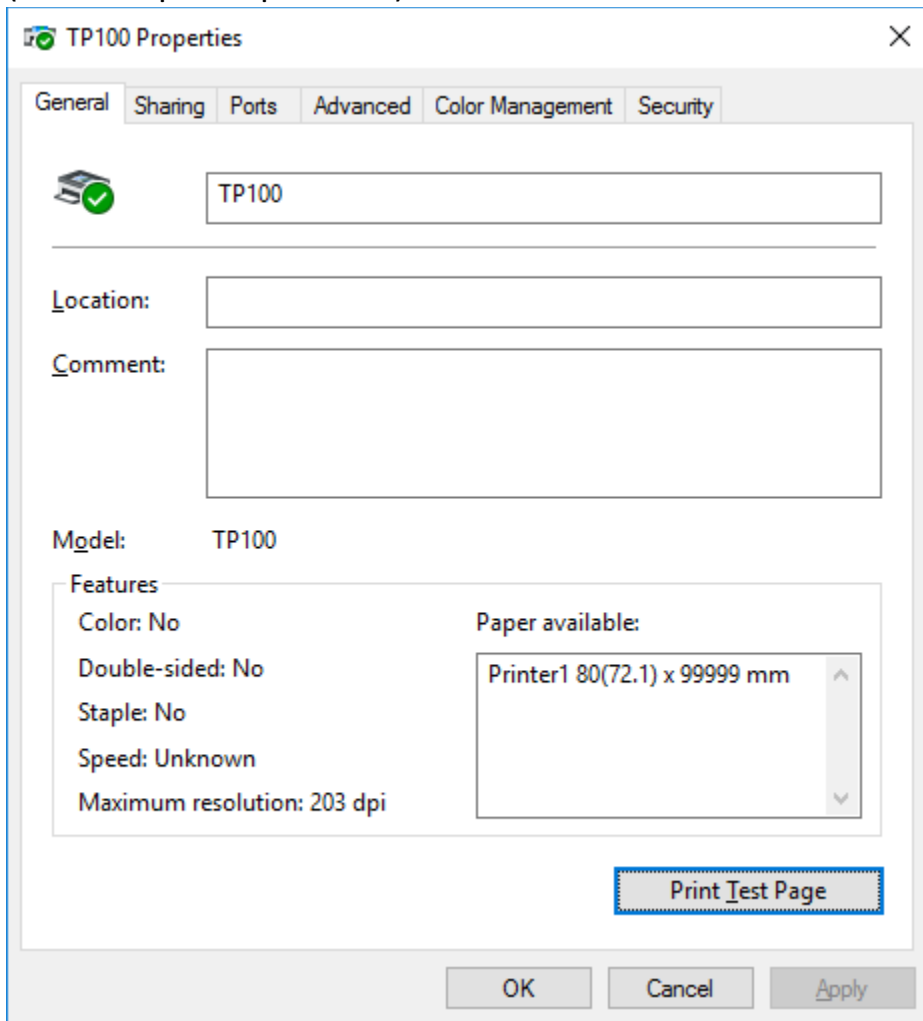


The Senor Building

65 & 67 Weaver Street P: +61 7 3275 5888
Coopers Plains QLD 4108 F: +61 7 3275 5800
Brisbane, Australia
support@senortech.com.au
www.senortech.com.au



13. Click Print Test Page to confirm the printer is setup correctly.
(test receipt will print out)



The image shows a Windows-style dialog box titled "TP100 Properties" with a close button (X) in the top right corner. The "General" tab is selected, showing a printer icon with a green checkmark and a text field containing "TP100". Below this are fields for "Location:" and "Comment:". The "Model:" is listed as "TP100". A "Features" section contains: "Color: No", "Double-sided: No", "Staple: No", "Speed: Unknown", and "Maximum resolution: 203 dpi". A "Paper available:" dropdown menu is open, showing "Printer1 80(72.1) x 99999 mm". A "Print Test Page" button is highlighted with a blue dashed border. At the bottom are "OK", "Cancel", and "Apply" buttons.

The Senor Building

65 & 67 Weaver Street P: +61 7 3275 5888
Coopers Plains QLD 4108 F: +61 7 3275 5800
Brisbane, Australia
support@senortech.com.au
www.senortech.com.au

