

# WANDRD MEDICAL KIT

---

## Overview

HEY WANRD FAM,

THE WANDRD PRODUCT DESIGN TEAM HAS DESIGNED A SMALL “CORONA KIT” FOR YOU TO MAKE WHILE STUCK AT HOME. WE RECOMMEND YOU FIND AN OLD BACKPACK/MATERIALS AROUND THE HOUSE SO THAT YOU CAN PRACTICE SOCIAL DISTANCING. IF YOU NEED TO BUY MATERIALS WE RECOMMEND SHOPPING ONLINE AND SUPPORTING SMALL BUSINESSES.

THIS PATTERN REQUIRES 2 ZIPPERS FOR POCKETS IN THE BAG- IF YOU DO NOT HAVE ZIPPERS OR DO NOT WANT THE EXTRA POCKETS YOU DON'T HAVE TO ADD THEM. INSTEAD, YOU CAN MAKE AN OPEN POCKET.

HERE ARE SOME WEBSITES IF YOU WOULD LIKE TO ORDER FABRIC, ZIPPERS, OR OTHER HARDWARE.

-RIPSTOPBYTHEROLL.COM

-SEATTLEFABRICS.COM

-ROCKYWOODS.COM

-STRAPWORKS.COM

-JOANN.COM

-AMAZON.COM

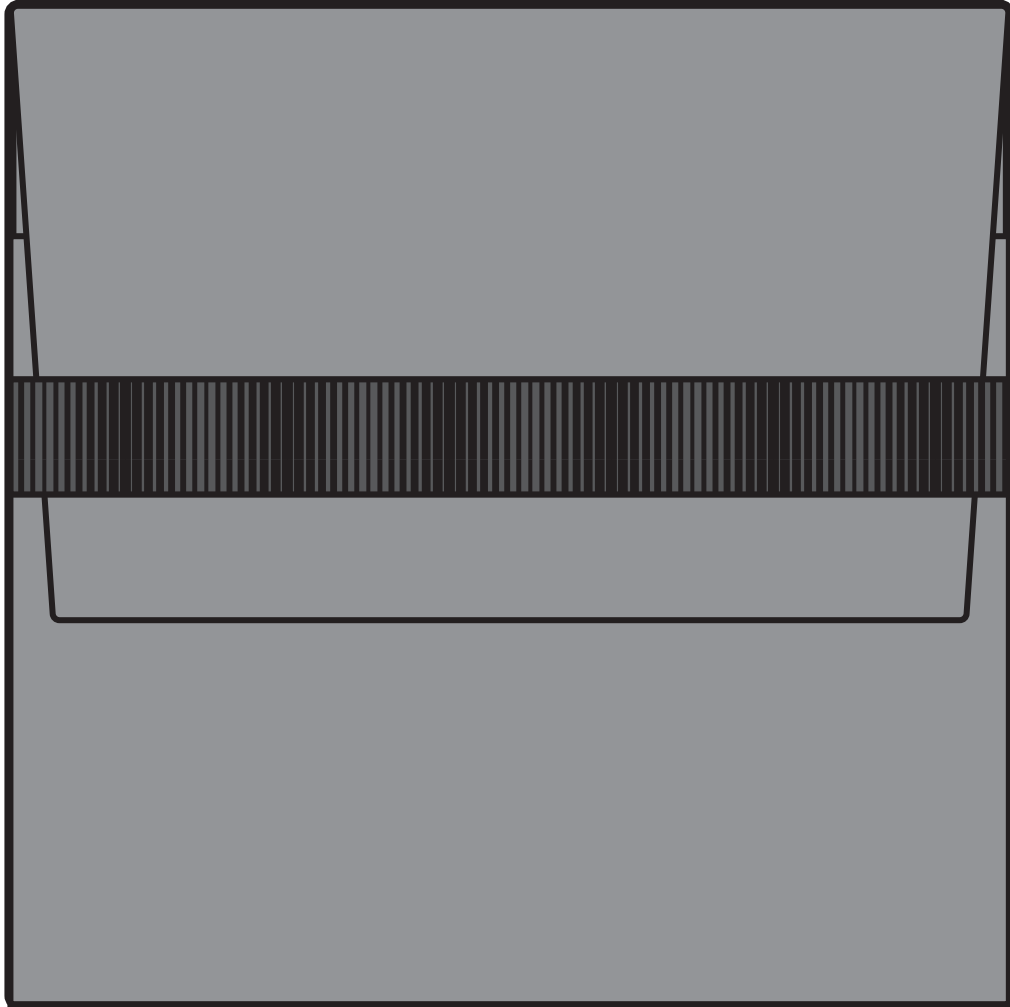
### **MATERIALS NEEDED:**

- ABOUT 1/2 YD. OF FABRIC  
(OR FIND AN OLD BACKPACK TO REPURPOSE)
- 2 ZIPPERS 7” IN LENGTH

# WANDRD MEDICAL KIT

---

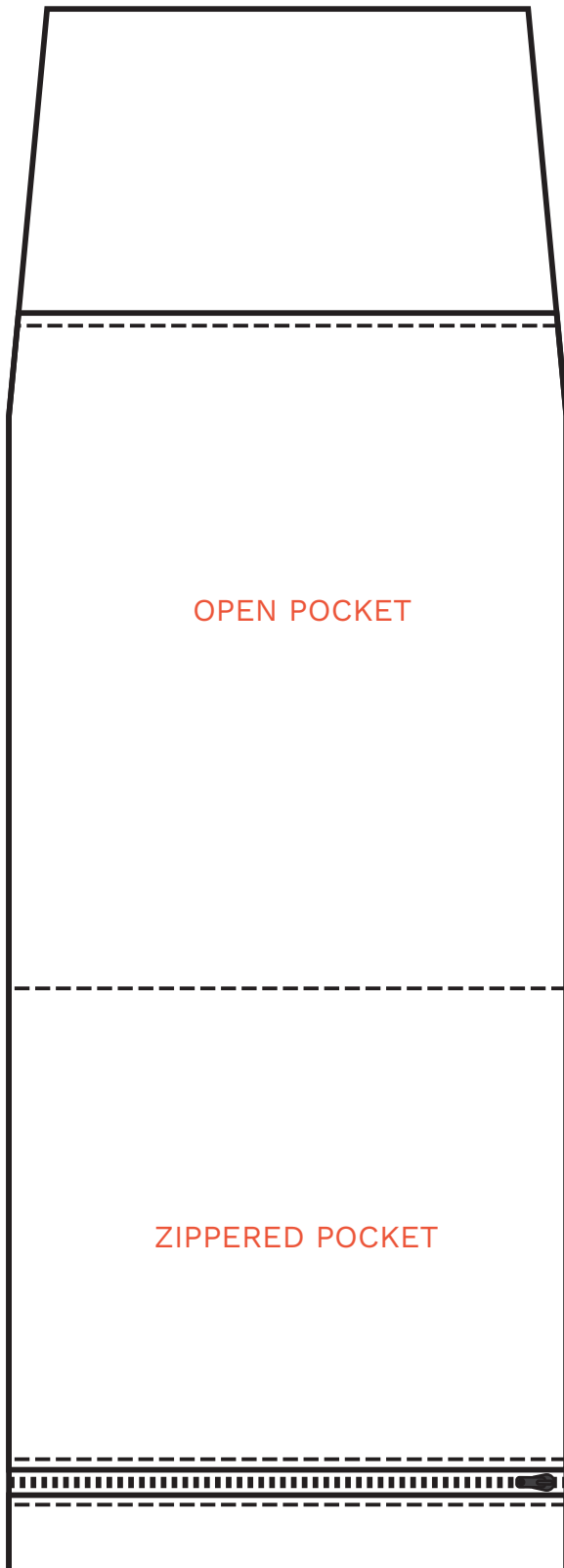
Overview



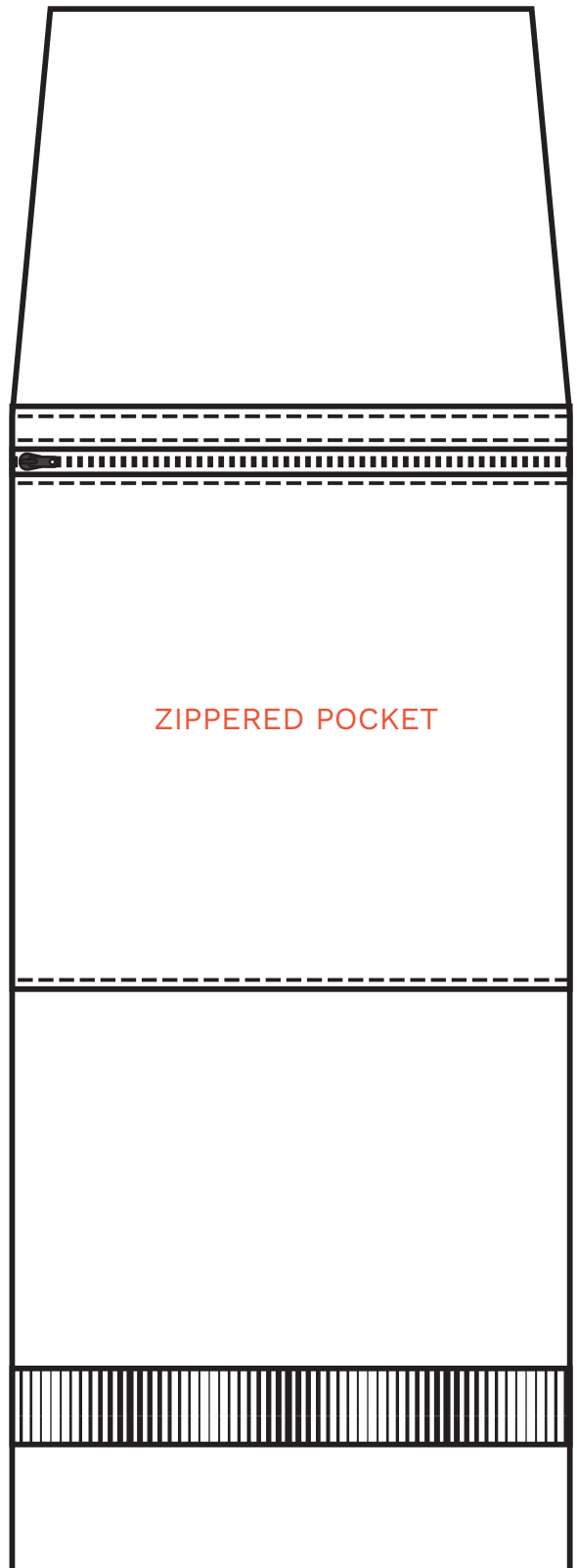
# WANDRD MEDICAL KIT

---

## Overview



INSIDE



OUTSIDE

# WANDRD MEDICAL KIT

---

## Instructions

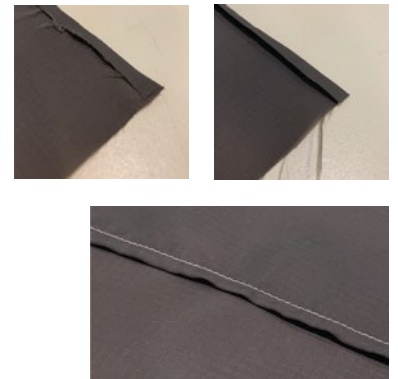
### 1. CUT OUT PATTERN PIECES

Cut out all pattern pieces as they are. Tape the pattern pieces A together, and then tape pattern pieces B & C together. Pin the pattern pieces to fabric close together so fabric is not wasted. If you are using an old backpack make sure to line up the bottom pocket piece with the zipper.

### 2. CLEAN FINISH THE EDGES OF THE OPEN POCKETS

A clean finish is done by folding the top edge of the fabric down 1/4", press with an iron, and then fold down 1/4" one more time. Stitch close to the edge of the fold. This should be done with the fabric folding towards the wrong side of the fabric.

On pattern piece B clean finish the smallest edge.



## SKIP TO STEP 7 IF YOU ARE NOT MAKING YOUR OWN ZIPPER POCKET

### 3. ATTACH ONE SIDE OF ZIPPER TO FABRIC

Put the zipper face down on the bottom edge of pattern piece C (where you didn't add the clean finish) with fabric facing up.

Stich zipper to fabric at 1/2" seam allowance.



### 4. EDGE STITCH TOP OF ZIPPER

Fold the fabric edge back and press your finger along the fold. Edge stitch by stitching at 1/8" or less from the folded edge.



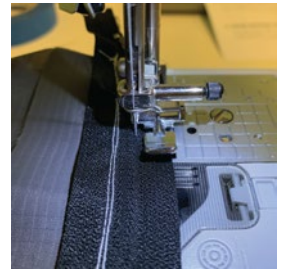
# WANDRD MEDICAL KIT

---

## Instructions

### 5. ATTACH OTHER SIDE OF ZIPPER TO FABRIC

Put the zipper face down on top of pattern piece D with fabric facing up.  
Stich zipper to fabric at 1/2" seam allowance.



### 6. EDGE STITCH TOP OF ZIPPER

Fold the fabric edge back and press your finger along the fold. Edge stitch the folded edge at 1/16" or less from the edge.



### 7. ATTACH POCKET TO LINING

Pin the pocket to the lining by matching up the bottom edge of the large pocket with the bottom edge of the lining. Stitch along the 3 sides of the pocket (that do not have a clean finished edge) at 1/4". See red line on image.

Add two rows of stitching along the middle of the pocket 6" from the bottom of the bag. See red line on image.



### 8. ATTACH WEBBING TO OUTER FABRIC

Pin the webbing 1 3/4" from the bottom edge of the outer fabric. Stitch at 1/4" on each side.

If you don't have webbing, you can make your own from extra fabric. Cut out fabric that is 6 1/2" in length, and 1 3/4" in width. Fold the fabric in half (right sides together) and sew at 1/2". Pull the tube inside out and press flat with an iron. You have created your own strap!



# WANDRD MEDICAL KIT

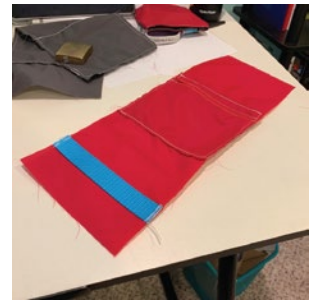
---

## Instructions

**IF YOU WANT TO ADD THE EXTRA ZIPPER POCKET ON THE OUTSIDE, ADD IT NOW. SKIP TO STEP 10 IF YOU ARE NOT ADDING THE EXTRA POCKET.**

### 9. CREATE AND SEW ON OUTER POCKET

Using pattern pieces C & D, create another zipper pocket by following steps 3-6. Clean finish the top and bottom edges. Pin the pocket to the outer fabric 6" from the bottom edge. Sew the pocket to the outer fabric along the stitch lines you created for the clean finish.



### 10. SEW LINING TO OUTER FABRIC

Pin the lining to the outer fabric with the right sides of the fabric facing each other. Stitched all the way around the outside of the bag at 1/2" leaving the spot between the two marks open at the top. See red line on image.

Once sewn, flip the bag inside out. Pull out corners.



### 11. FINISH THE EDGE

Tuck the top edge of the fabric where the hole is between the lining and the outer material. Press with an iron for 5 seconds. Edge stitch at 1/8" or less from the edge all the way around the bag.



### 12. CONGRATS, YOU'RE DONE!

Once finished you can add your medical items to your coronavirus safety kit!  
Or turn it into another bag for anything you want.



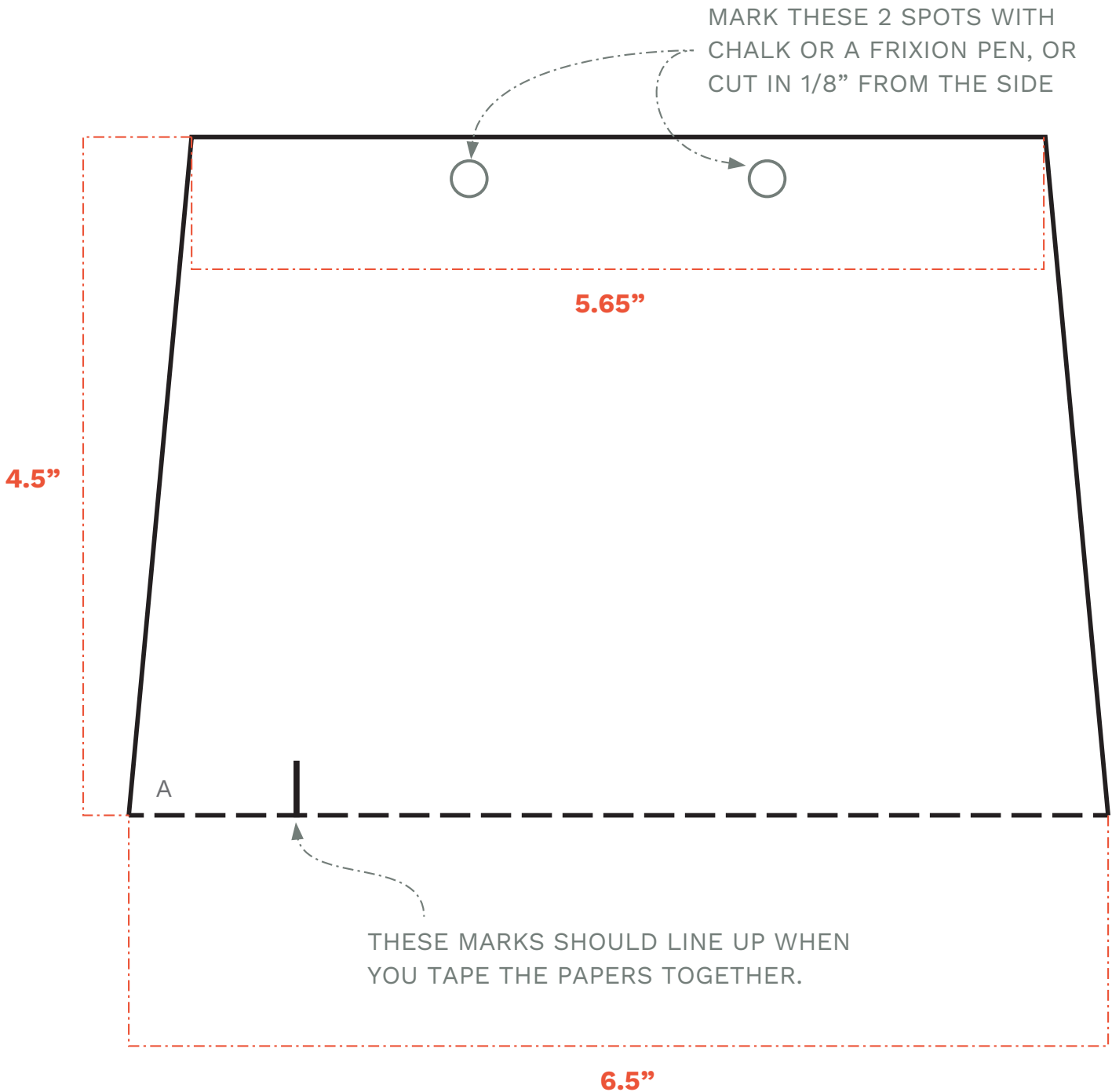
**CHEERS, WANDRD**

# WANDRD MEDICAL KIT

Pattern

## PATTERN: OUTER PANEL (1/3)

CUT OUT AND TAPE THE NEXT 3 PAGES TOGETHER. LINE UP THE MARKS.



# WANDRD MEDICAL KIT

Pattern

## PATTERN: OUTER PANEL (2/3)

THESE MARKS SHOULD LINE UP WHEN YOU TAPE THE PAPERS TOGETHER.

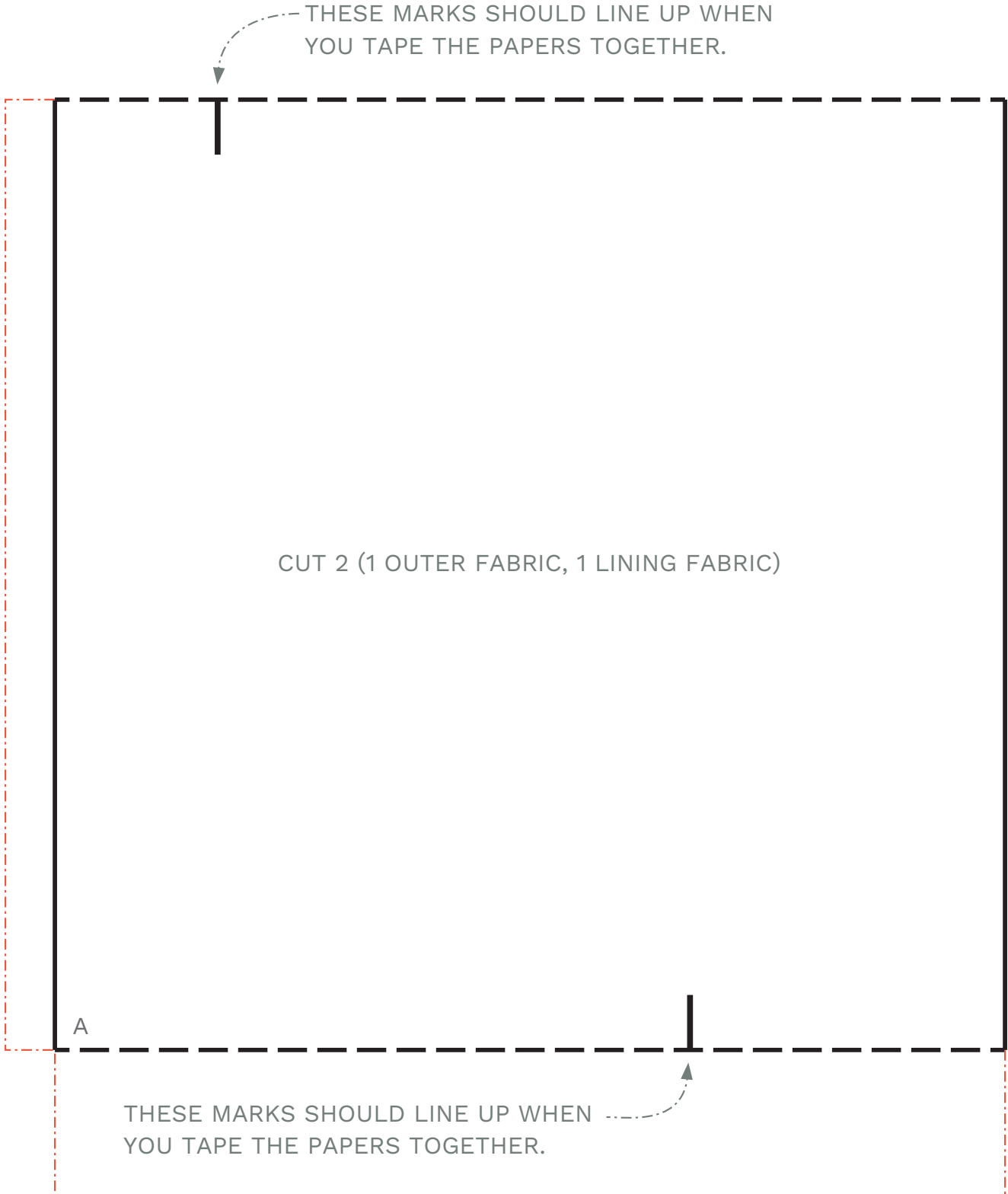
6.5"

CUT 2 (1 OUTER FABRIC, 1 LINING FABRIC)

A

THESE MARKS SHOULD LINE UP WHEN YOU TAPE THE PAPERS TOGETHER.

6.5"



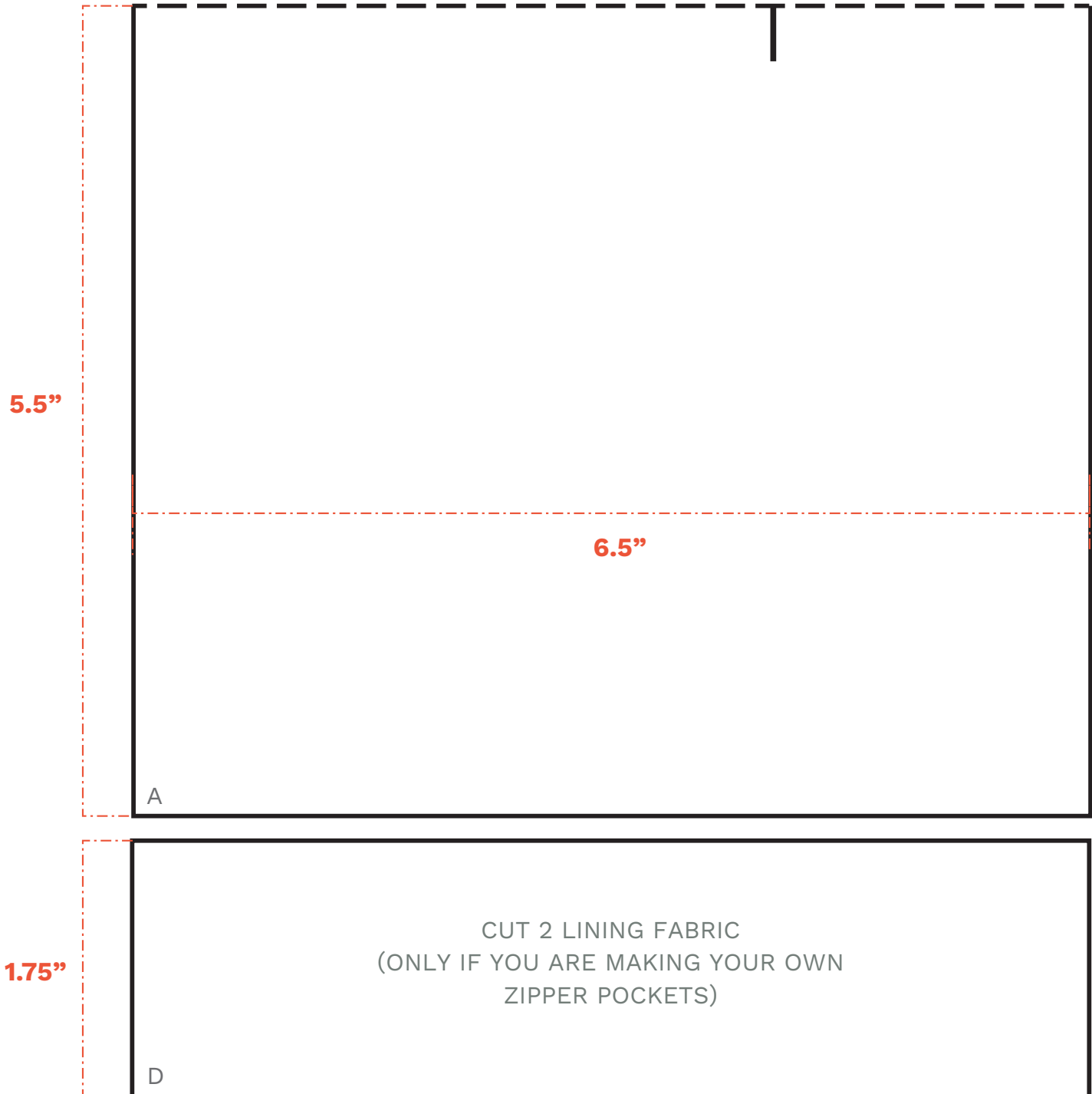


# WANDRD MEDICAL KIT

Pattern

## PATTERN: OUTER PANEL (3/3)

THESE MARKS SHOULD LINE UP WHEN YOU TAPE THE PAPERS TOGETHER

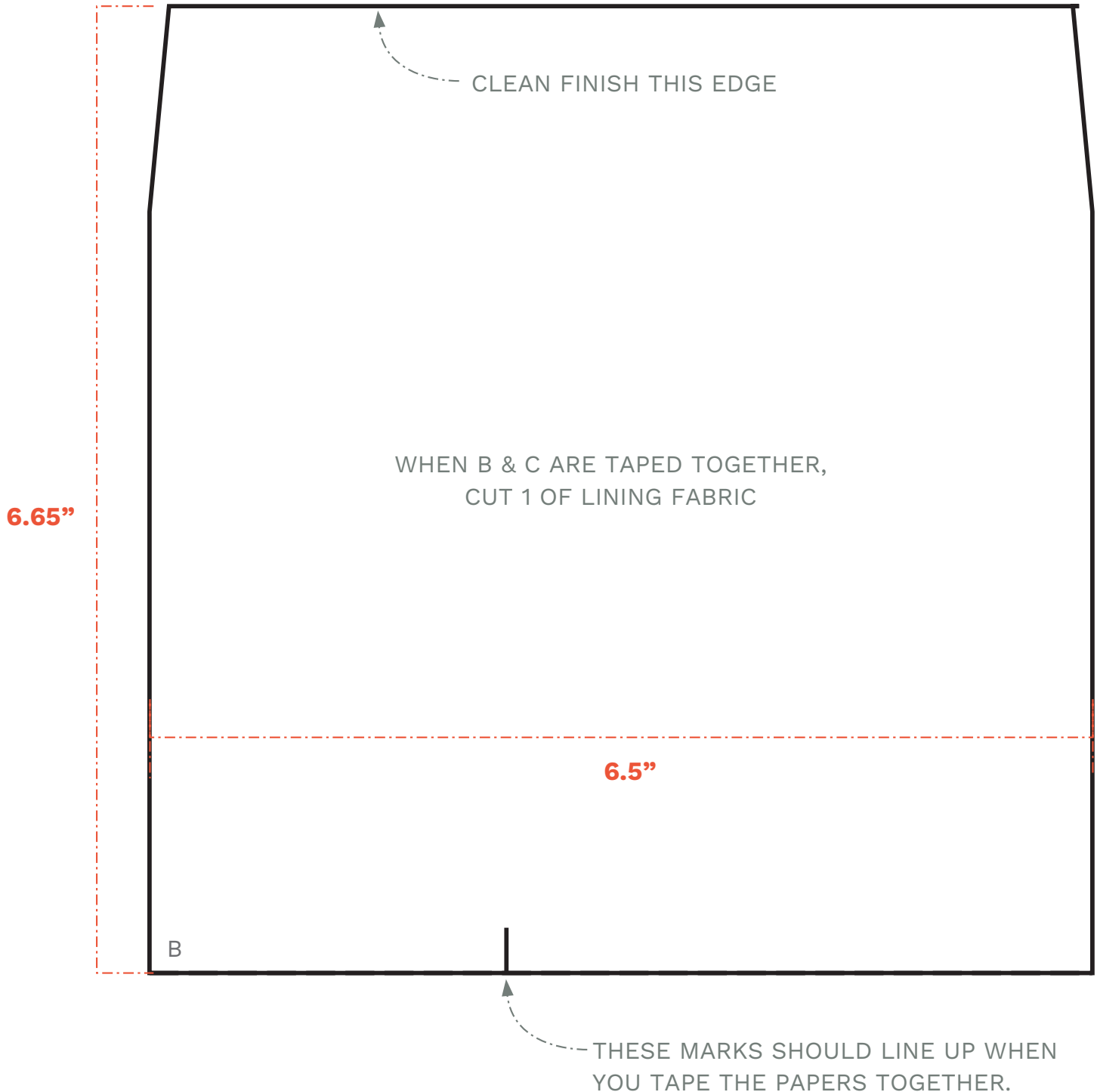


# WANDRD MEDICAL KIT

Pattern

## MAIN POCKET VERSION 1 (1/2)

CUT OUT AND TAPE THE NEXT 2 PAGES TOGETHER. LINE UP THE MARKS.



# WANDRD MEDICAL KIT

Pattern

## MAIN POCKET VERSION 1 (2/2)

THESE MARKS SHOULD LINE UP WHEN YOU TAPE THE PAPERS TOGETHER.

