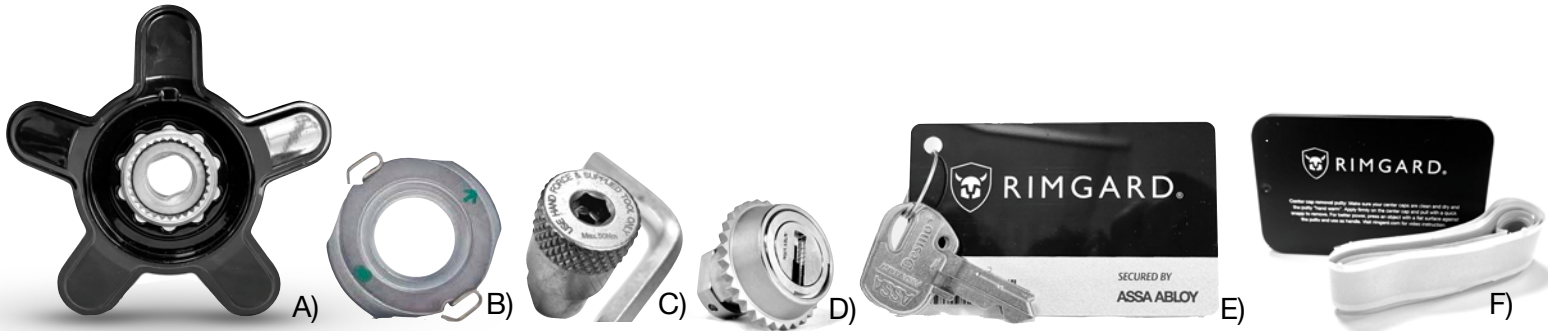


This box contains

- A) Main module, 4pc
- B) Locking ring, 4pc
- C) Installation tool, 1 pc Allen key, 1pc
- D) Cylinder lock 4pc
- E) Keys, 2pc, Keycard, 1pc
- F) Butyl putty, 1pc

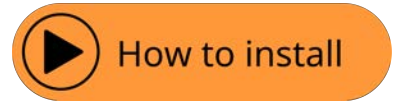
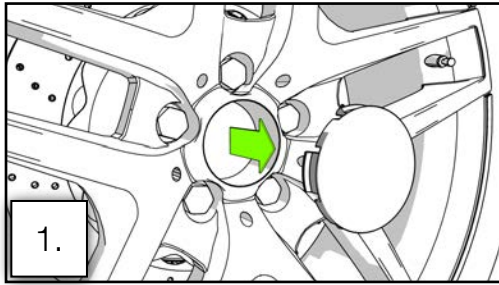


Before installing

By installing Rimgard on your car you - the user - agree to and understand the information below.

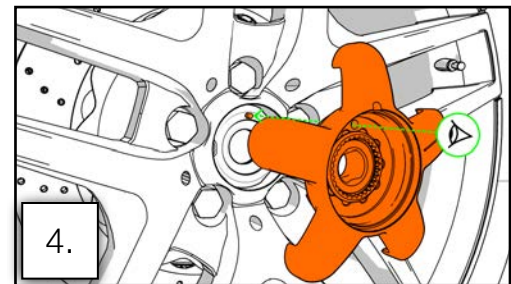
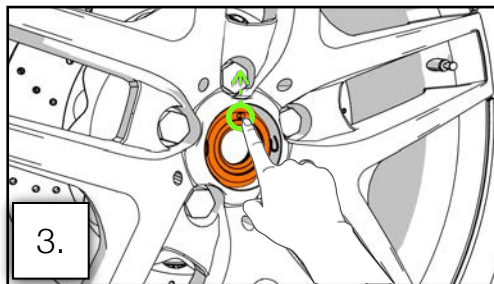
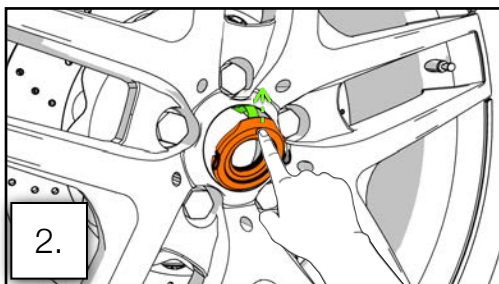
1. Never drive with Rimgard installed without locking cylinder!
2. Be careful when you install your locks the first time. Your Rimgard locks will most likely fit your wheels nicely, but wheel designs vary and sometimes the lock simply is not compatible.
 1. Evaluate if there is anything in your wheel design that will make the surface of the wheel make contact with the arms of the lock.
 2. Proceed gently and make sure the module only rests against the rim center hole, where the center cap used to be. The arms must not make contact with the wheel. If you are uncertain, contact us and attach photos of the rim - we will happily advise.
 3. You must always be careful and observe caution when installing the product on your wheels. You are ultimately responsible for a correct installation. Rimgard does not accept responsibility for errors made by the user when installing and/or using the product or any damage caused to vehicle or person due to incorrect installation.
3. Always make sure to keep one key on your car key or key chain. Keep the allen key and adapter in your car.
4. You have the smartest lock for a reason - to keep your wheels. Make sure you never store the key in your car - that is not smart.
5. You have the safest lock too, that means that there are no master keys available, yours are the only ones.
Store your spare key and the key card in a safe place.
6. Only use Rimgard as instructed in this manual. Rimgard does not accept responsibility for possible damages and/or injuries inflicted due to unintended or improper use.
7. Check the locks regularly to ensure that they are installed with a tight fit and have not been subject to manipulation.
8. If you hear dissonance or believe the product is making noise when installed, do not drive or move the car before uninstalling Rimgard.
9. Contact Rimgard if you need to remove the product after a failed theft attempt and we will direct you to an authorised workshop or other qualified help.
10. You as user is responsible to observe local laws, rules and regulations.

DISCLAIMERS; IN NO EVENT SHALL THE COMPANY BE LIABLE FOR ANY DIRECT, INDIRECT, PUNITIVE, INCIDENTAL, OR CONSEQUENTIAL DAMAGES, TO PROPERTY OR LIFE, WHATSOEVER ARISING OUT OF OR CONNECTED WITH THE USE OR MISUSE OF THE PRODUCT. EXCEPT AS SET FORTH HEREIN, THE COMPANY EXPRESSLY DISCLAIMS ALL OTHER WARRANTIES, EXPRESS OR IMPLIED, INCLUDING WITHOUT LIMITATION, WARRANTIES OF MERCHANTABILITY, FITNESS FOR A PARTICULAR PURPOSE, OR NON-INFRINGEMENT. UNDER NO CIRCUMSTANCES SHALL THE COMPANY BE LIABLE TO THE BUYER OF THE PRODUCT TO THE EXTENT SUCH CLAIMS, SUITS, LOSSES, DAMAGES, COSTS, FEES AND EXPENSES RESULT FROM OR ARISE OUT OF THE MISUSE, NEGLIGENCE OR WILFUL MISCONDUCT, OR FAILURE TO FOLLOW ENCLOSED WRITTEN PRODUCT INSTALLATION INSTRUCTIONS.



Our own "hack" is to apply butyl putty onto the center cap so that it covers as much of the cap as possible. Use an object with a flat surface as handle and press it firmly against the putty. Pull with a quick snap to remove.

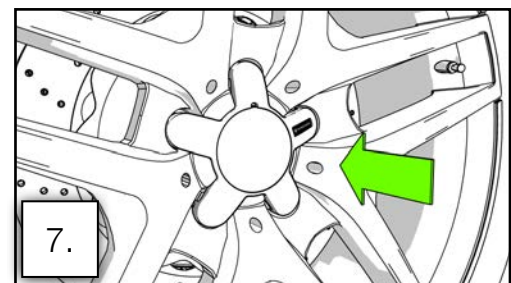
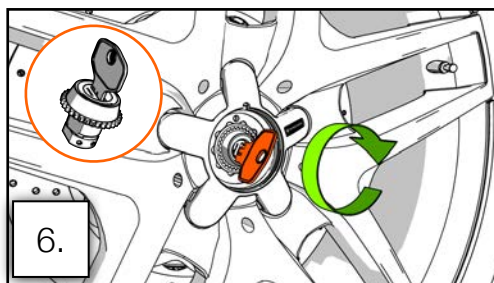
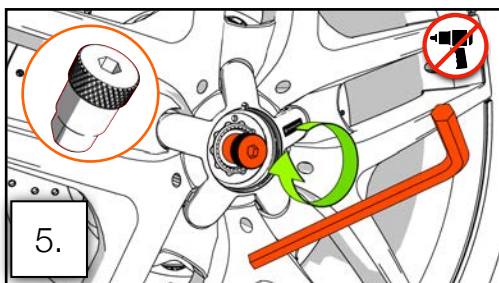
Make sure the putty is warm and the surface is clean and be careful not to damage your center caps. If you cannot get the cap off, remove the wheel from the car and press from the inside. Scan the QR-code for video of all steps for a complete installation.



Insert locking ring at an angle with edge opposite to pin first. Align pin upwards and with a lug.

Gently press the locking ring into place with tension to the wire spring and center it. Ensure alignment of the pin towards a lug.

Place the module in the center of the wheel. Fit the hole in the module with the pin on the locking ring.



Engage the threaded center bolt with the locking ring and tighten with hex key.

Insert locking cylinder, turn key to locked position and remove key.

Put your original center cap back onto the module and you are done!

Torque: 50 ± 5 Nm / 35 ± 5 lb-ft

DO NOT USE AN IMPACT WRENCH

Store hex key and adaptor in your vehicle in case of need to remove the locks.

NEVER DRIVE WITH RIGARD MODULES INSTALLED WITHOUT LOCKING CYLINDERS. IT IS A SAFETY HAZARD AND YOU CAN LOSE THEM WHILE DRIVING!

Keep one key with your car key in case of immediate need to remove the locks.

Never store the key in your vehicle.

Friendly advice - remember to always keep:

- A Rimgard key on you car key
- The hex key and adaptor in vehicle
- The spare key and key card in a safe place